



**Chevron  
U.S.A., Inc.**

WELL NO.: M.B. LARSON B-3AX  
(A0813)  
FIELD . . . : RANGELY, CO.

## SURVEY DATA

## REMARKS

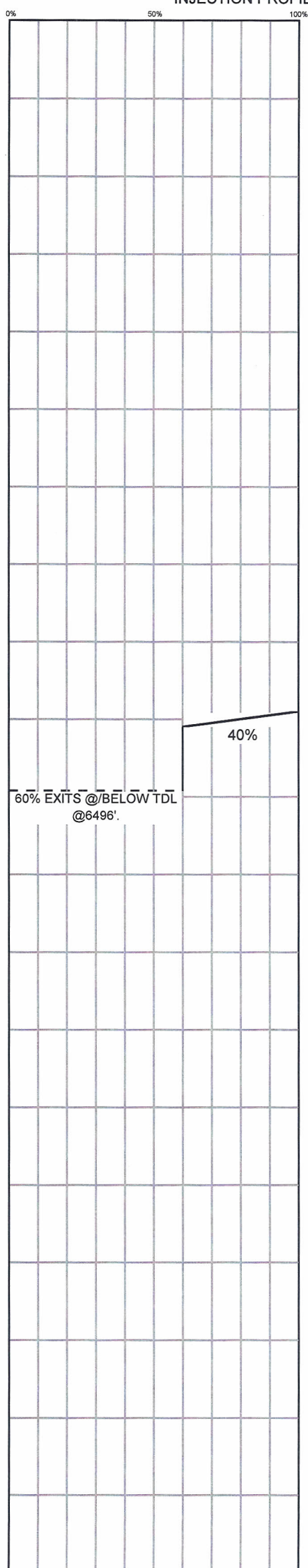
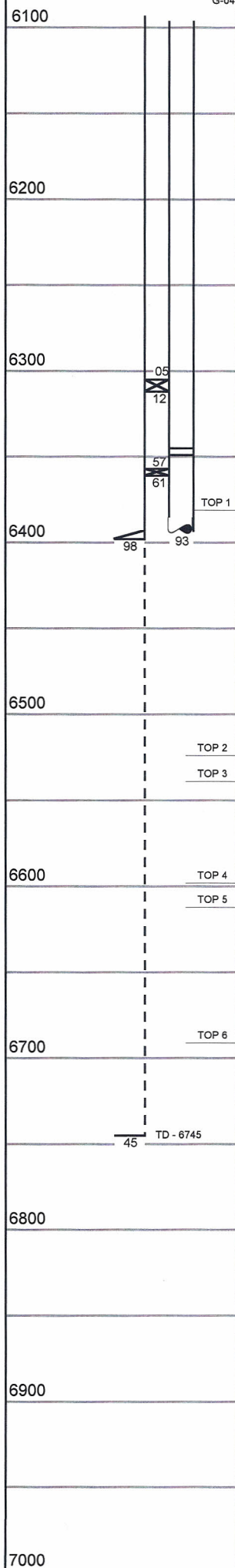
SURVEY TYPE . . .	T-S-T	SURFACE TEMP . .	109.3 F
DATE . . . . .	11/1/2013	BHT . . . . .	114.8 F
METERED RATE . .	1630 B/D*	TBG PRESSURE . .	1500 PSI
MEASURED RATE:	2850 B/D	CSG PRESSURE . .	0 PSI
DESIRED RATE . .	N/A	PICK-UP . . . . .	6496'
SERVICE CO. . . .	PLS	INJ. FLUID . . . .	H2O

R/A TRACER INDICATES CASING SHOE AND  
PACKERS OK.  
RECORDED BY: CRAIG STRATTON  
\* INJECTION RATE DISCREPANCY  
04/04/13, RAN 1.75" GAUGE RING TO 6513'. DID NOT  
ATTEMPT TO GO ANY DEEPER. PICK-UP @ 6513±.  
RAN STATIC PRESSURE SURVEY.

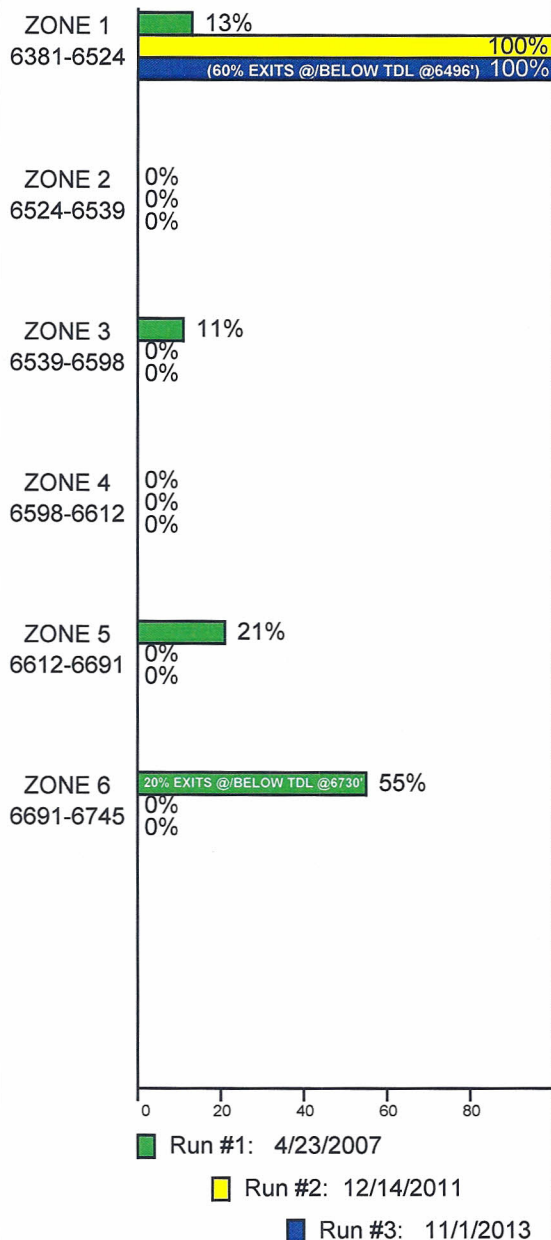
## INJECTION PROFILE

## MECHANICAL INFORMATION

MECHANICAL INFORMATION	
7" 23# CASING	0-6398'
OPEN HOLE	6398'-6745'
P.B.T.D.	6745'
2-7/8" 7.3# TUBING	0-6305'
TOP PACKER	6305'-6312'
2-7/8" F.G.W. TUBING	6312'-6345'
ON/OFF TOOL 1.875" "F"	6345'-6349'
2-7/8" F.G.W. TUBING	6349'-6357'
PACKER	6357'-6361'
2-7/8" F.G.W. TUBING	6361'-6393'
	G-04



PERCENTAGE INJECTED INTO  
ZONE



## TEMPERATURES (F°)

[illegible]