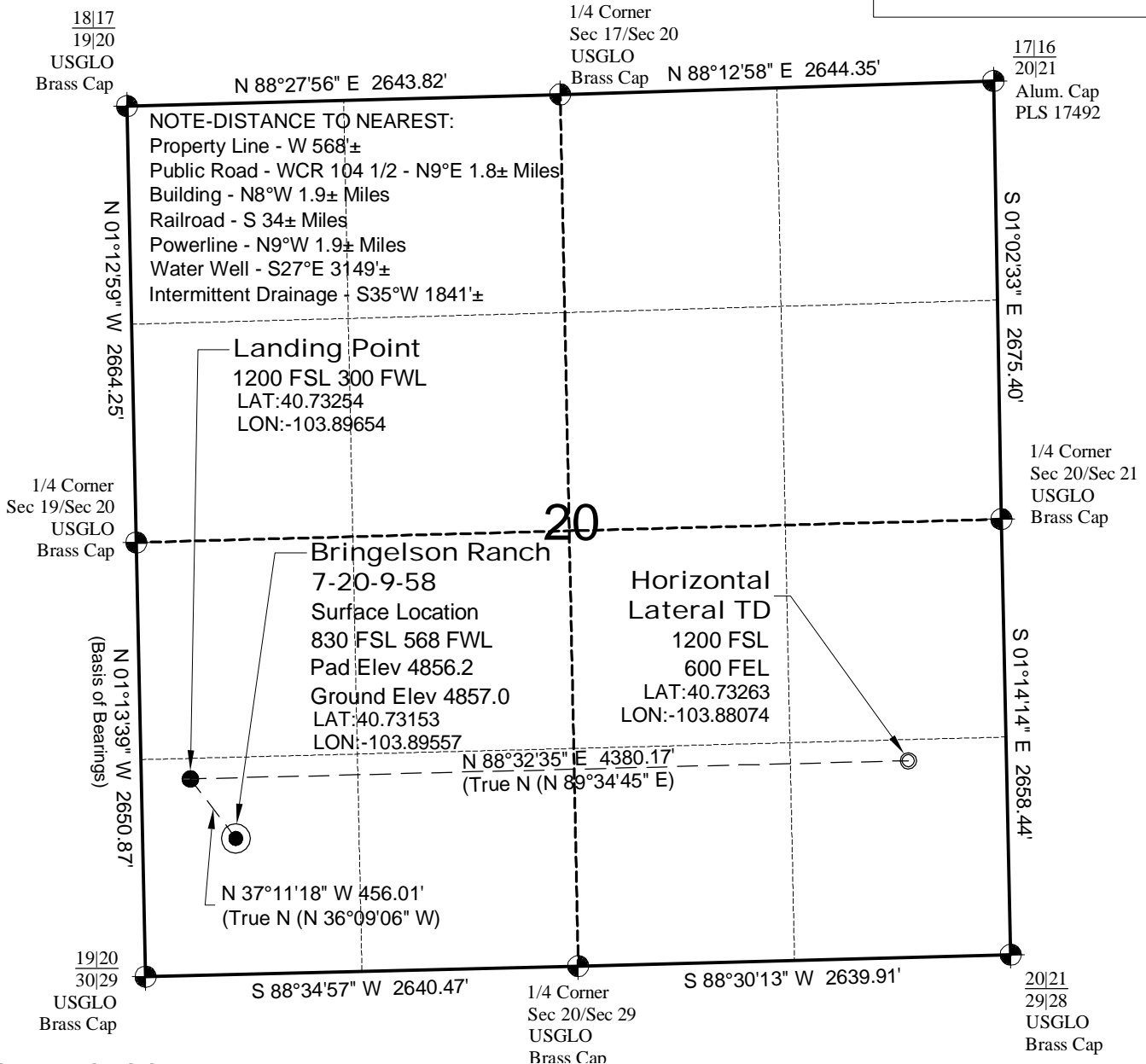


# WELL LOCATION MAP

**BRINGELSON RANCH  
5-20-9-58 PAD**

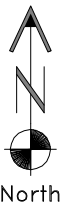


## SURVEYOR'S STATEMENT

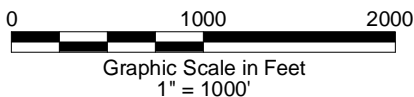
The undersigned hereby states that the well location shown hereon was staked on the ground based on existing monumentation and/or physical evidence found in the field and is correct to the best of my knowledge, information and belief.

## NOTES

- 1.) Horizontal (NAD 83) and vertical (NAVD 88) datum is based on the Leica Geosystems SmartNet of Colorado.
  - 2.) All directions, distances, and dimensions shown hereon are based on coordinates from the "Colorado coordinate system of 1983 north zone" (article 52 of title 38, C.R.S.).
  - 3.) All section line dimensions shown hereon are based on field measurements of existing monuments and/or physical evidence found in the field unless otherwise indicated.
  - 4.) Physical features shown hereon are for graphical representation only.
  - 5.) See Form 2A for visible improvements within 500' of wellhead.
  - 6.) Distances to nearest section lines are measured perpendicularly.
  - 7.) This is not a land survey nor land survey plat.
  - 8.) Date of Survey 10/1/13; Date of Drawing 11/5/13. REV 2
- PDOP Reading: 2.6 Instrument Operator: Marc Woodard



North



**CARRIZO NIOBRARA LLC  
BRINGELSON RANCH 7-20-9-58**

**SL SW1/4 SW1/4 SEC.20 T9N R58W  
HL TD SE1/4 SE1/4 SEC.20 T9N R58W  
6th PM WELD COUNTY COLORADO**