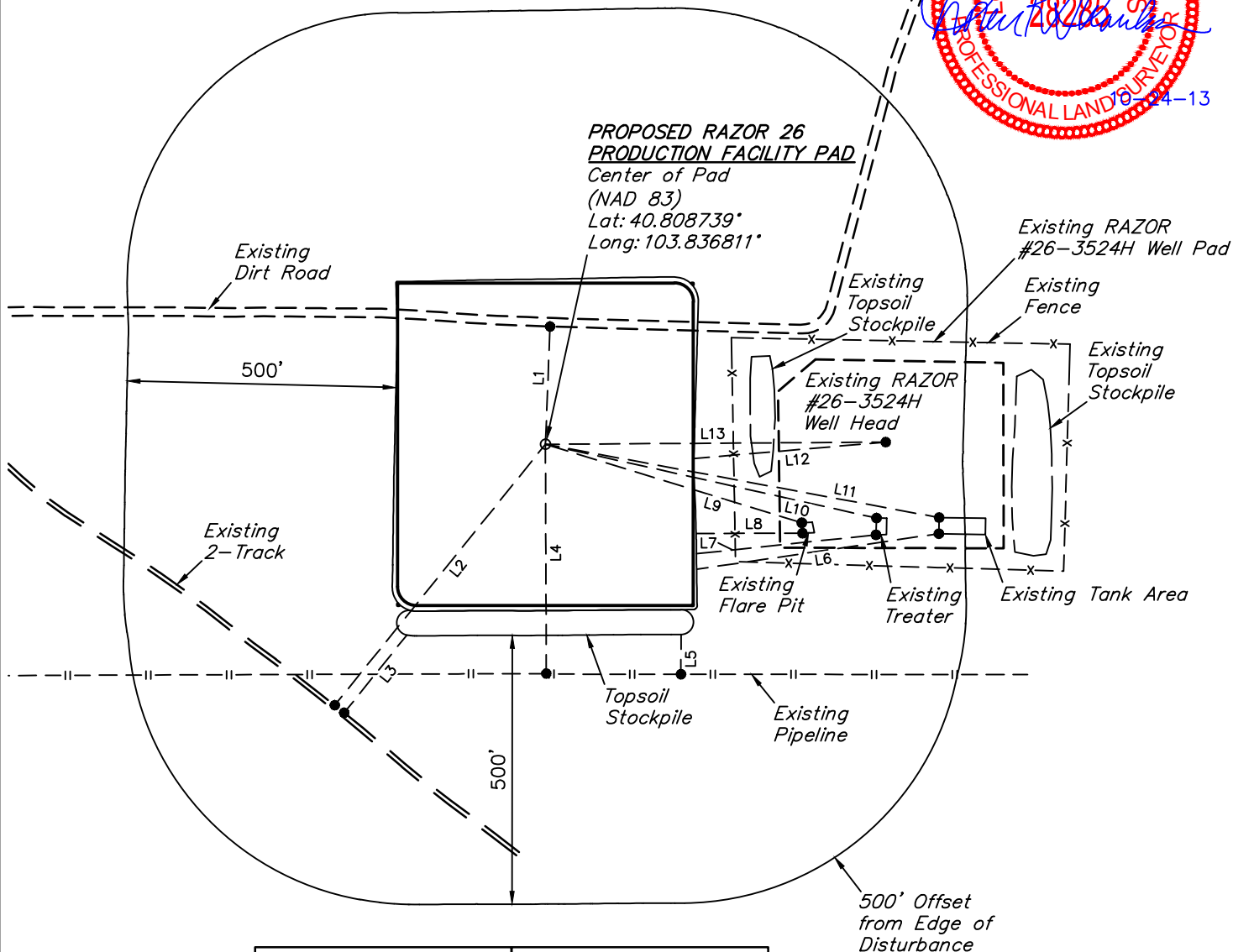


WHITING OIL & GAS CORP.
LOCATION DRAWING FOR
RAZOR 26 PRODUCTION FACILITY PAD
SECTION 26, T10N, R58W, 6th P.M.
2319' FSL 1347' FWL

SCALE: 1" = 300'
 DATE 10-18-13
 DRAWN BY: J.S.



| LINE TABLE | | | LINE TABLE | | |
|------------|-----------|--------|------------|-----------|--------|
| LINE | DIRECTION | LENGTH | LINE | DIRECTION | LENGTH |
| L1 | N02°E | 219' | L8 | EAST | 198' |
| L2 | S39°W | 624' | L9 | S73°E | 499' |
| L3 | S39°W | 186' | L10 | S77°E | 631' |
| L4 | SOUTH | 427' | L11 | S79°E | 745' |
| L5 | SOUTH | 74' | L12 | N85°E | 359' |
| L6 | N82°E | 456' | L13 | EAST | 633' |
| L7 | N84°E | 336' | | | |