

Whiting Oil and Gas Corporation

Razor 10H Hydrology Map

Sections 10 T10N R58W

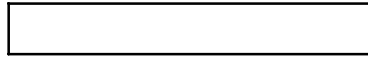
Weld County, Colorado

1 inch = 500 feet

By: H&B Petroleum Consultants 11-6-2013



Existing Well



Proposed Pad

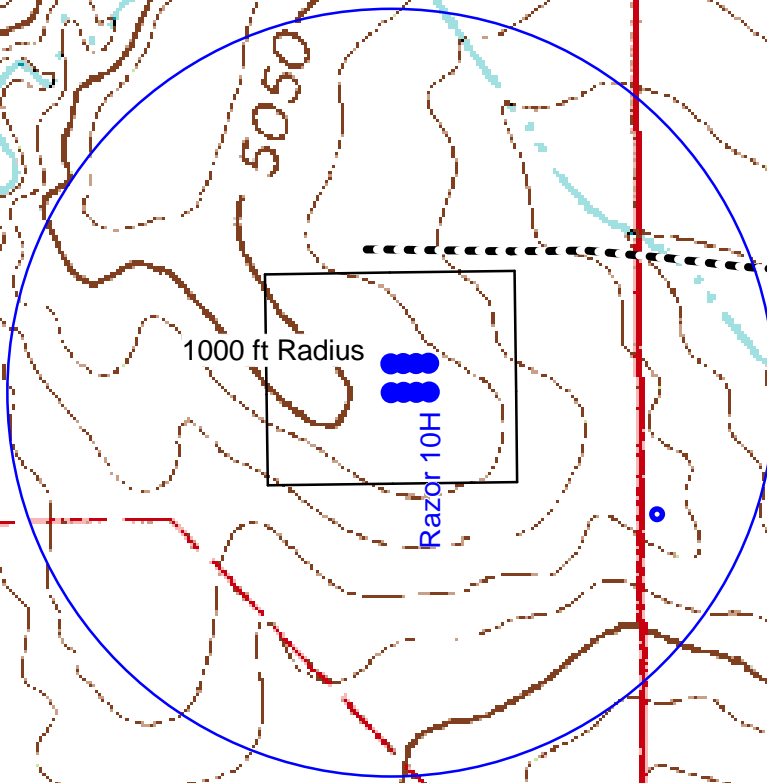
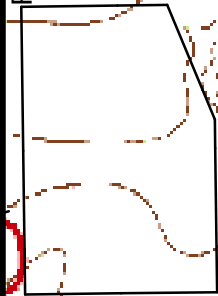


Proposed Well



Proposed Road

Razor 10 Production-Pad



1000 ft Radius

Razor 10H

Razor 11E