



**RADIAL CEMENT BOND  
GAMMA RAY  
CCL**

Company		KERR McGEE ROCKY MOUNTAIN CORP.	
Well		BAKER RED V 1-14A	
Field		WATTENBERG	
County		WELD	
State		CO	
Company		KERR McGEE ROCKY MOUNTAIN CORP.	
Well		BAKER RED V 1-14A	
Field		WATTENBERG	
County		WELD	
State		CO	
Location:		API # : 05-123-18533 SW/NE	
Permanent Datum		GL	
Log Measured From		KB 10'	
Drilling Measured From		KB	
SEC 1		TWP 2N	
RGE 67W		Elevation 4828'	
Other Services		K.B. 4838' D.F. 4837' G.L. 4828'	
Date		10-30-2013	
Run Number		1	
Depth Driller		7933'	
Depth Logger		1430'	
Bottom Logged Interval		1430'	
Top Log Interval		1430'	
Open Hole Size		7.875	
Type Fluid		WATER	
Density / Viscosity		1.0	
Max. Recorded Temp.		N/A	
Estimated Cement Top		SURFACE	
Time Well Ready		7.30 AM	
Time Logger on Bottom		7.45 AM	
Equipment Number		4310	
Location		GREELEY	
Recorded By		M. JANDREAU	
Witnessed By		LARRY WEBB	
Run Number		Borehole Record	
Bit		From	
To		Size	
Weight		From	
To		Tubing Record	
ONE		From	
TWO		From	
Casing Record		Size	
Surface String		8.63	
Prot. String		24#	
Production String		9.2#	
Liner		2.38	
Wgt/Ft		Top	
Bottom		514'	
Top		10'	
Bottom		7500'	
Top		7449'	
Bottom		7933'	


<<< Fold Here >>>

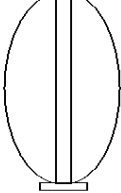
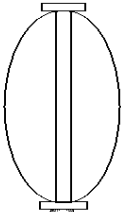
All interpretations are opinions based on inferences from electrical or other measurements and we cannot and do not guarantee the accuracy or correctness of any interpretation, and we shall not, except in the case of gross or willful negligence on our part, be liable or responsible for any loss, costs, damages, or expenses incurred or sustained by anyone resulting from any interpretation made by any of our officers, agents or employees. These interpretations are also subject to our general terms and conditions set out in our current Price Schedule.

Comments

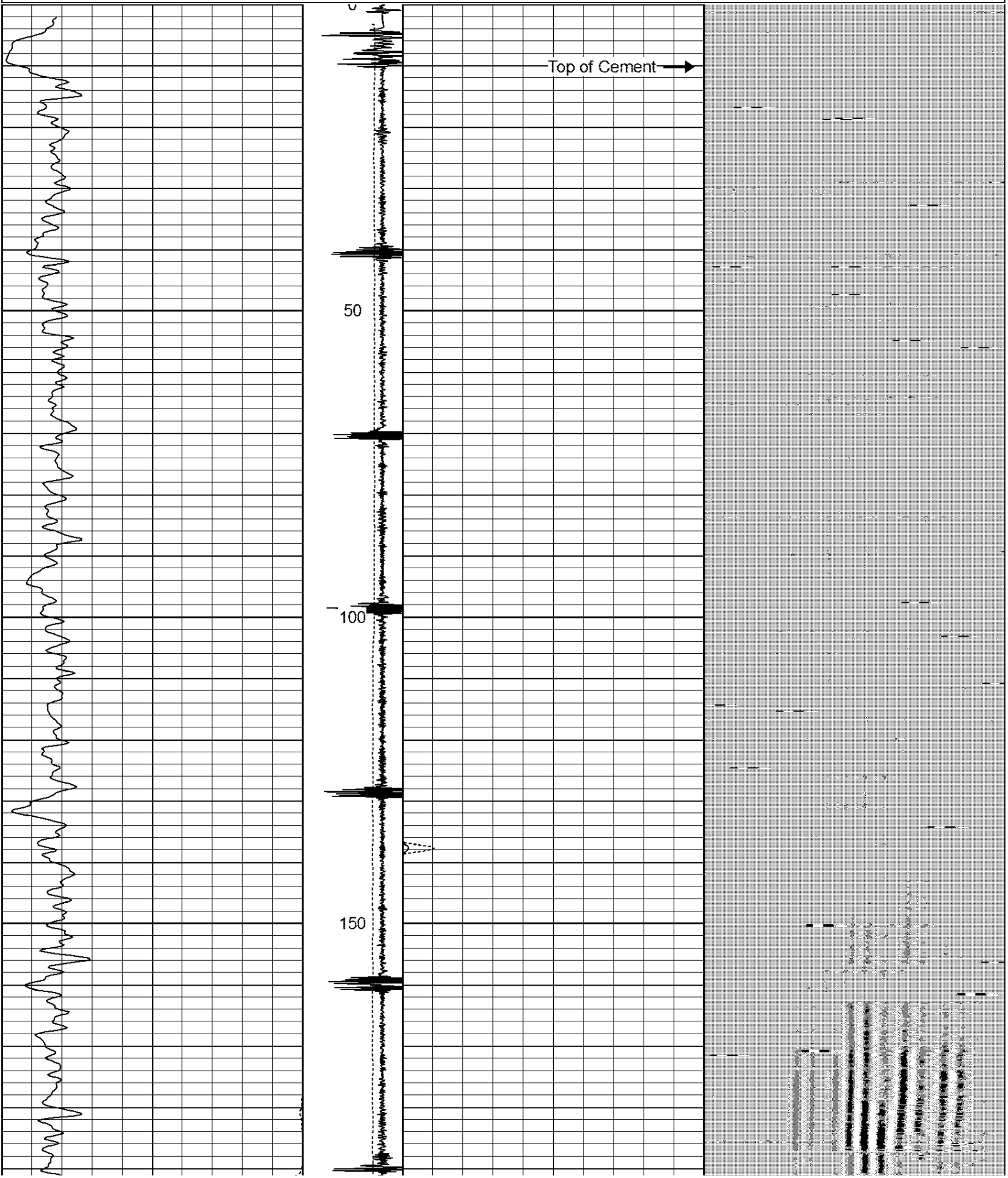
RAN CBL TO VERIFY CEMENT

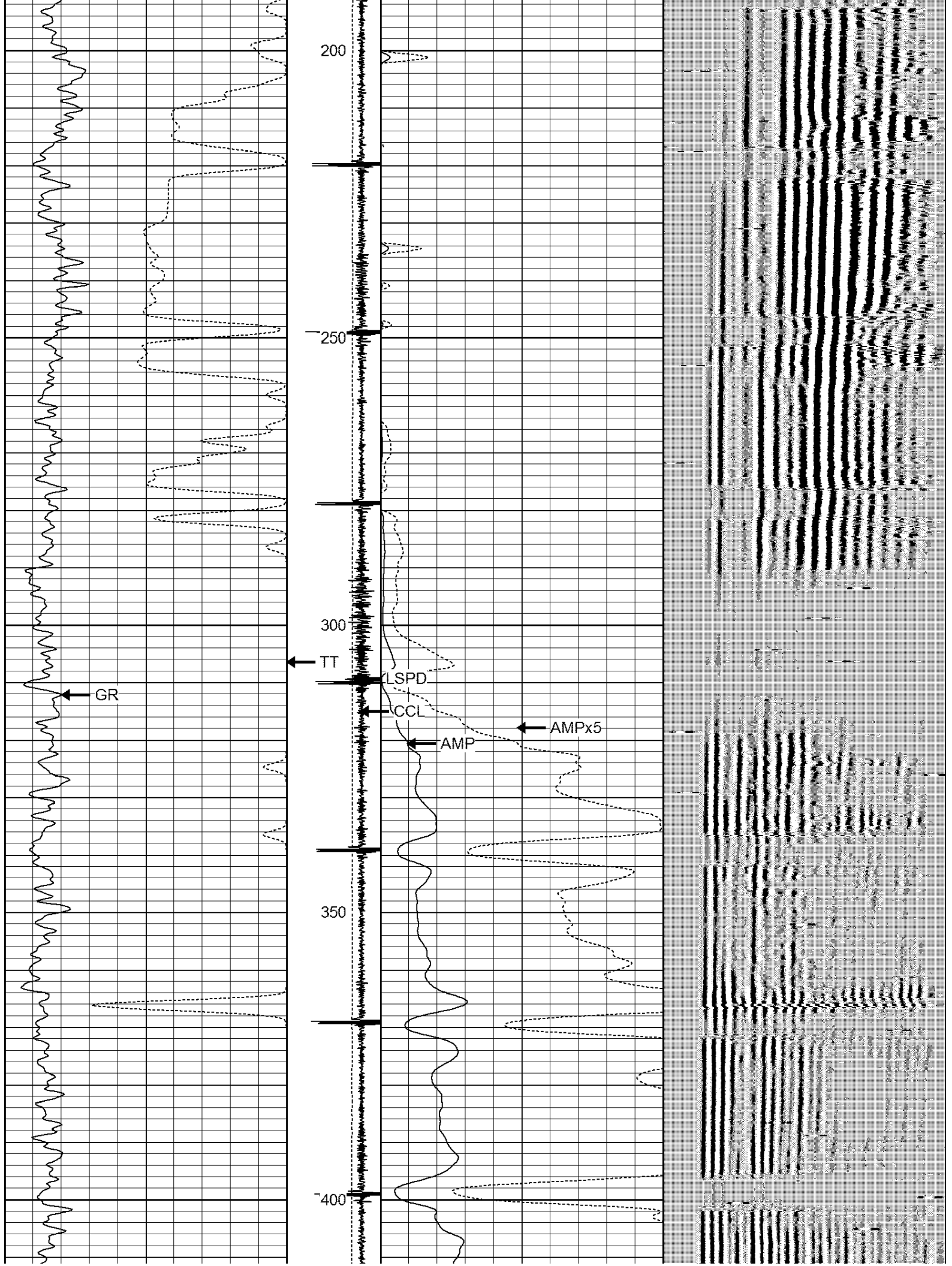
THANK YOU FOR USING IPS !!!!!!!

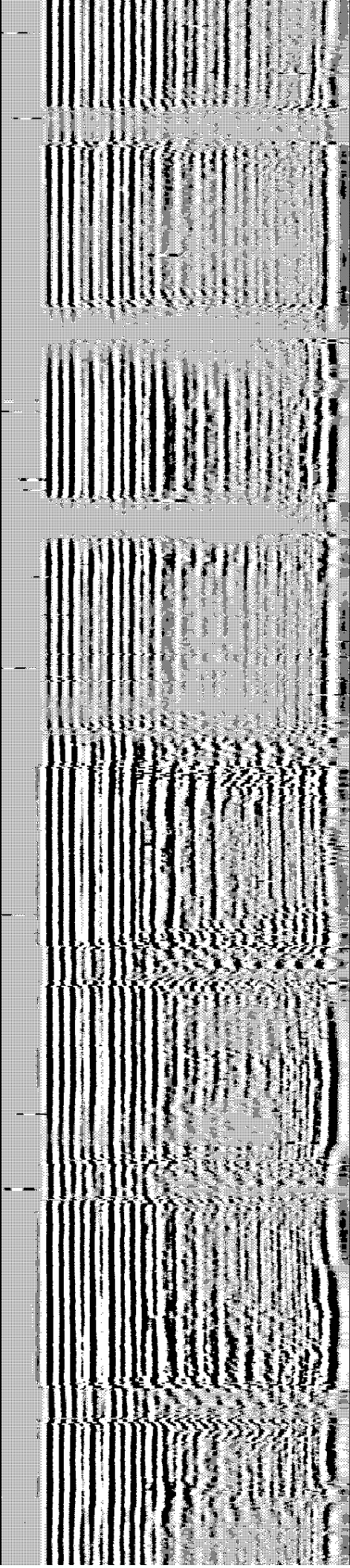
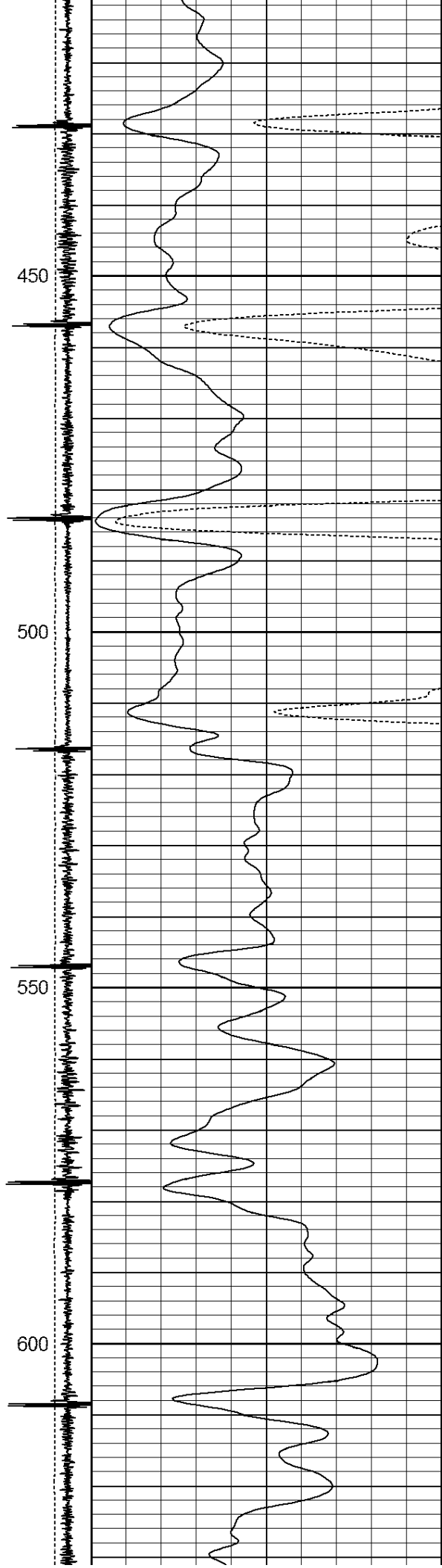
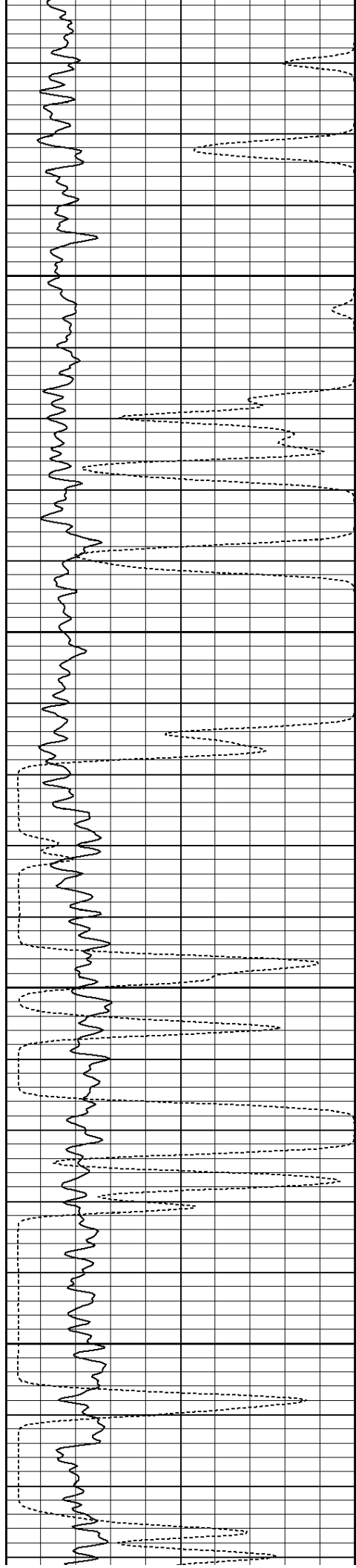
Sensor	Offset (ft)	Schematic	Description	Len (ft)	OD (in)	Wt (lb)
			1_4	1.00	1.36	5.00

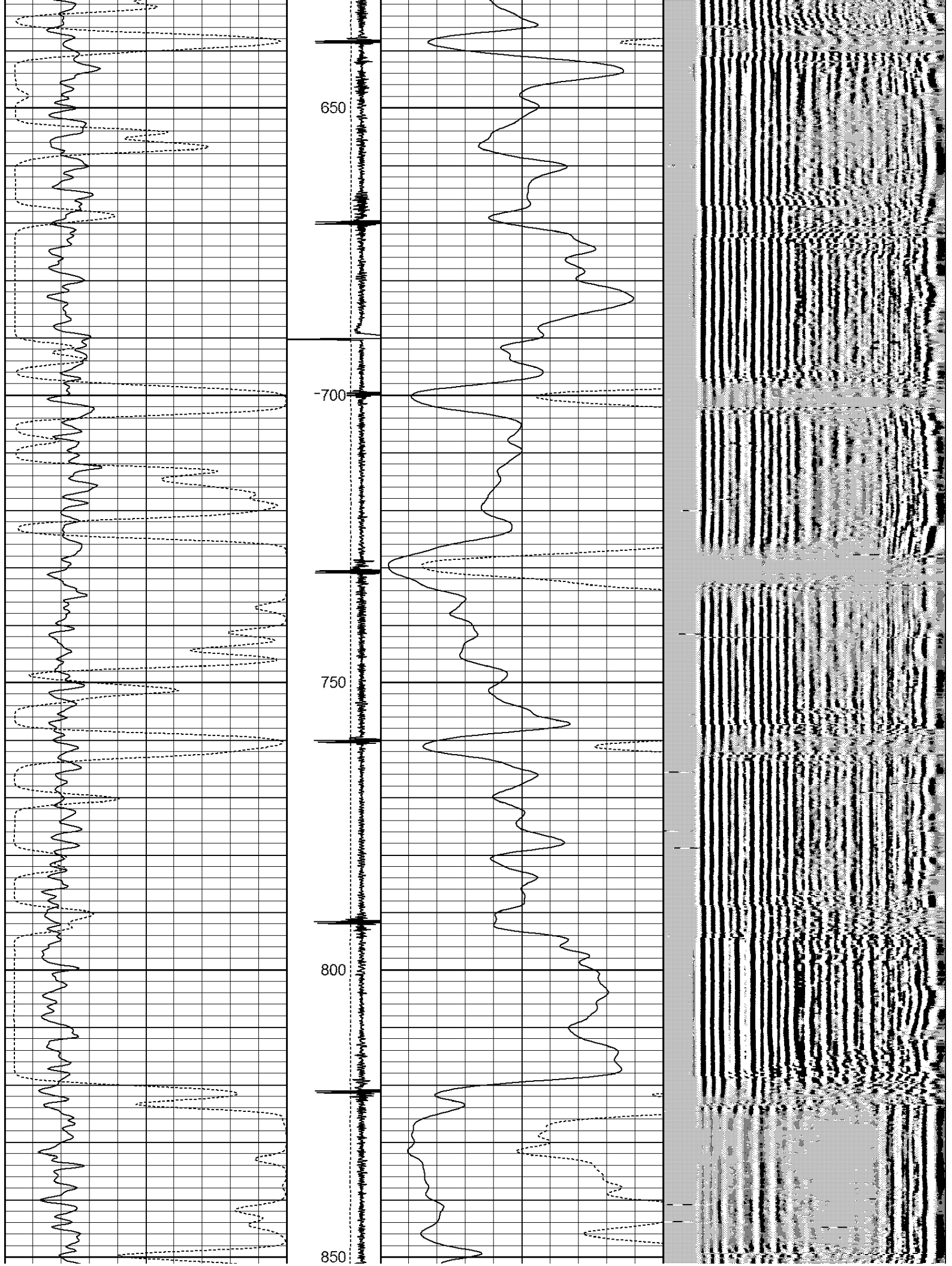
			1.69variable 1.69" Centrilizer Variable Length	2.17	1.69	15.00
WVF3FT	11.58		CBL102-Tekco102 (102-001)	9.51	1.69	50.00
WVF5FT	10.58					
WVFSYNC	7.25					
			1.69variable 1.69" Centrilizer Variable Length	2.17	1.69	15.00
CCL	4.17		CCL-sb1 (10000)	1.67	1.63	5.00
GR	2.67		GR-comp1a (10000)	3.42	1.75	20.00
Dataset: baker red v 1-14a.db: field/well/run1/pass3 Total Length: 19.93 ft Total Weight: 110.00 lb O.D. 1.75 in						

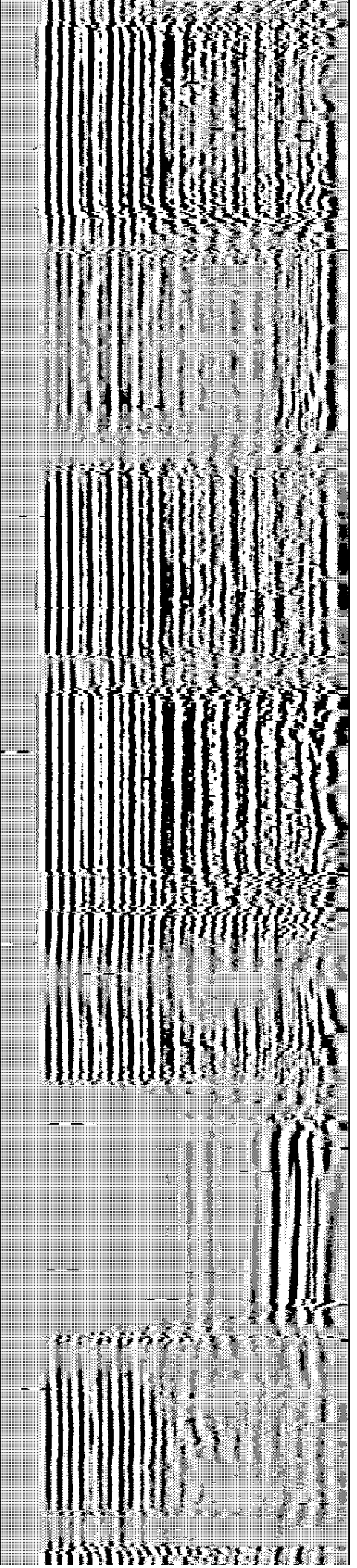
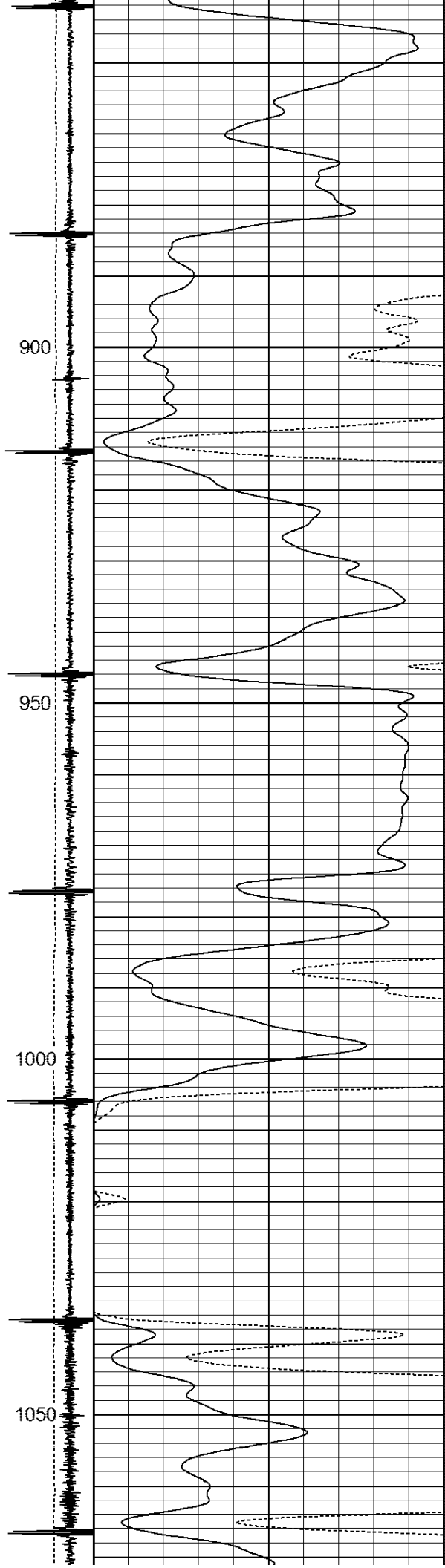
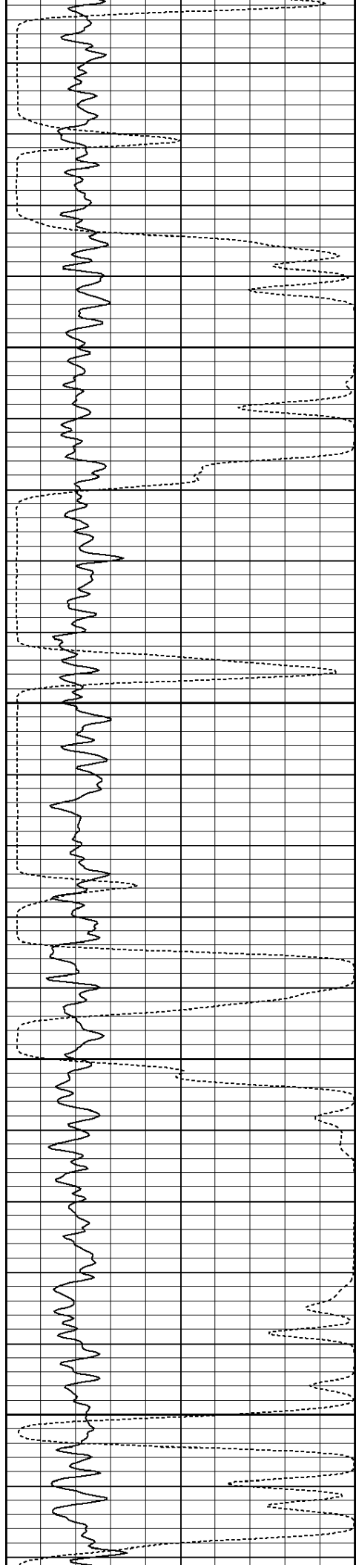
200	TT (usec)	800	-4	CCL	1	0	AMP (mV)	100	200	VDL	1200
0	GR (cps)	200	LSPD (ft/min)			0	AMPx5 (mV)	20			
200	GR (cps)	400									
						0	100				



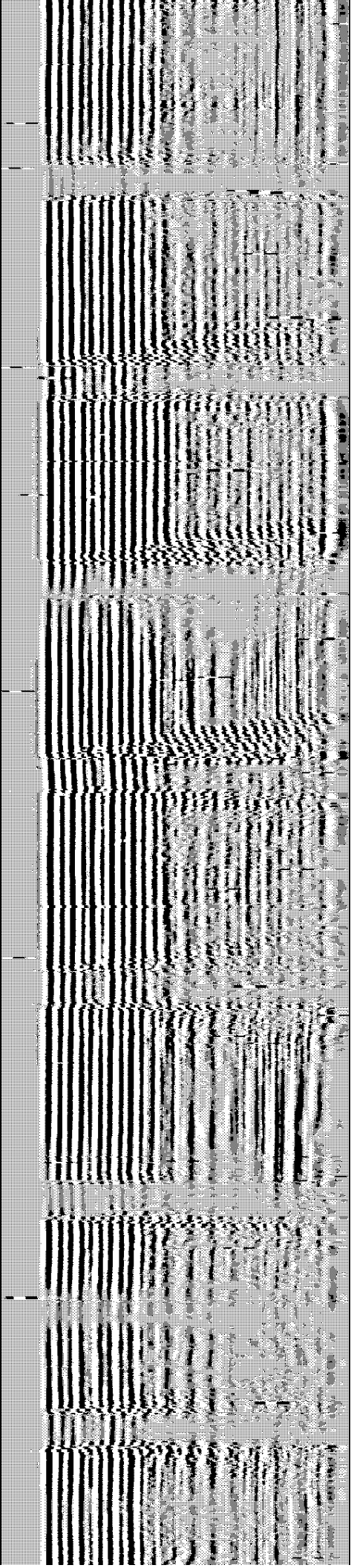
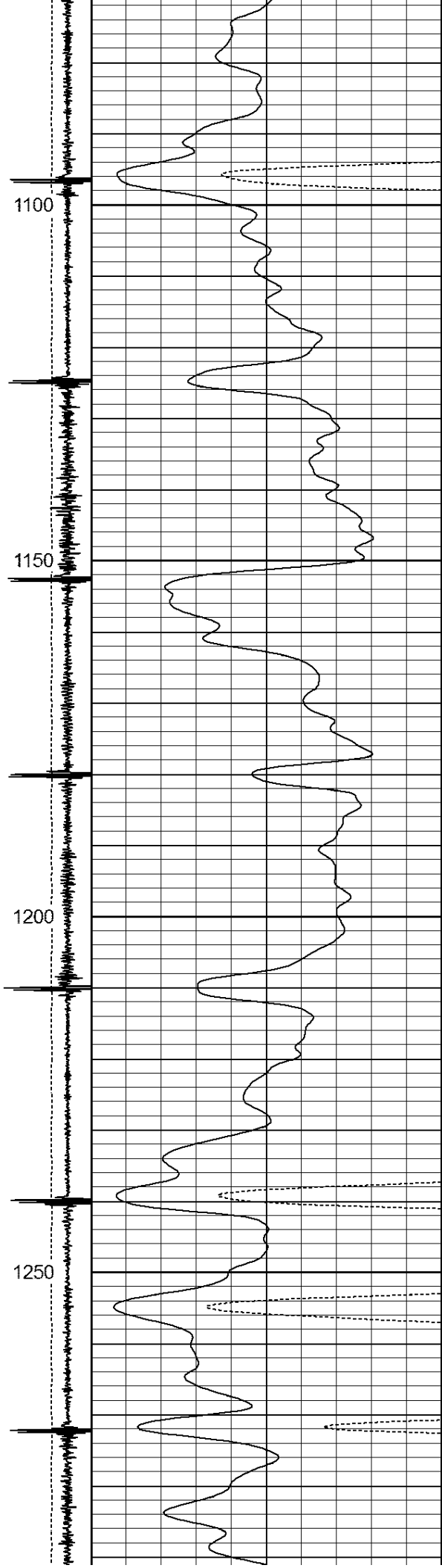
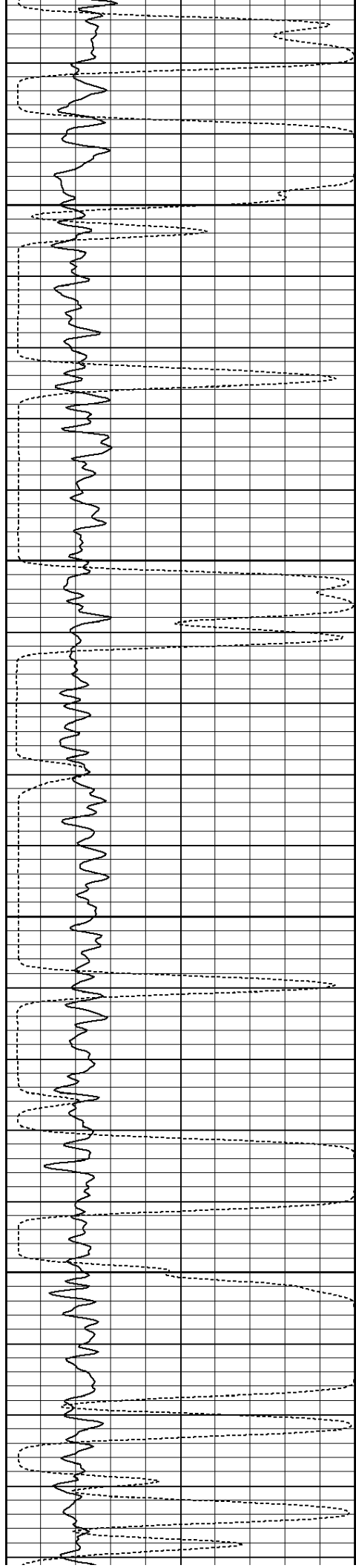




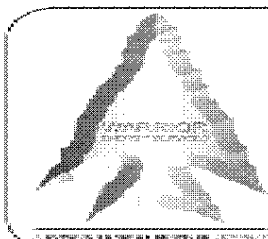
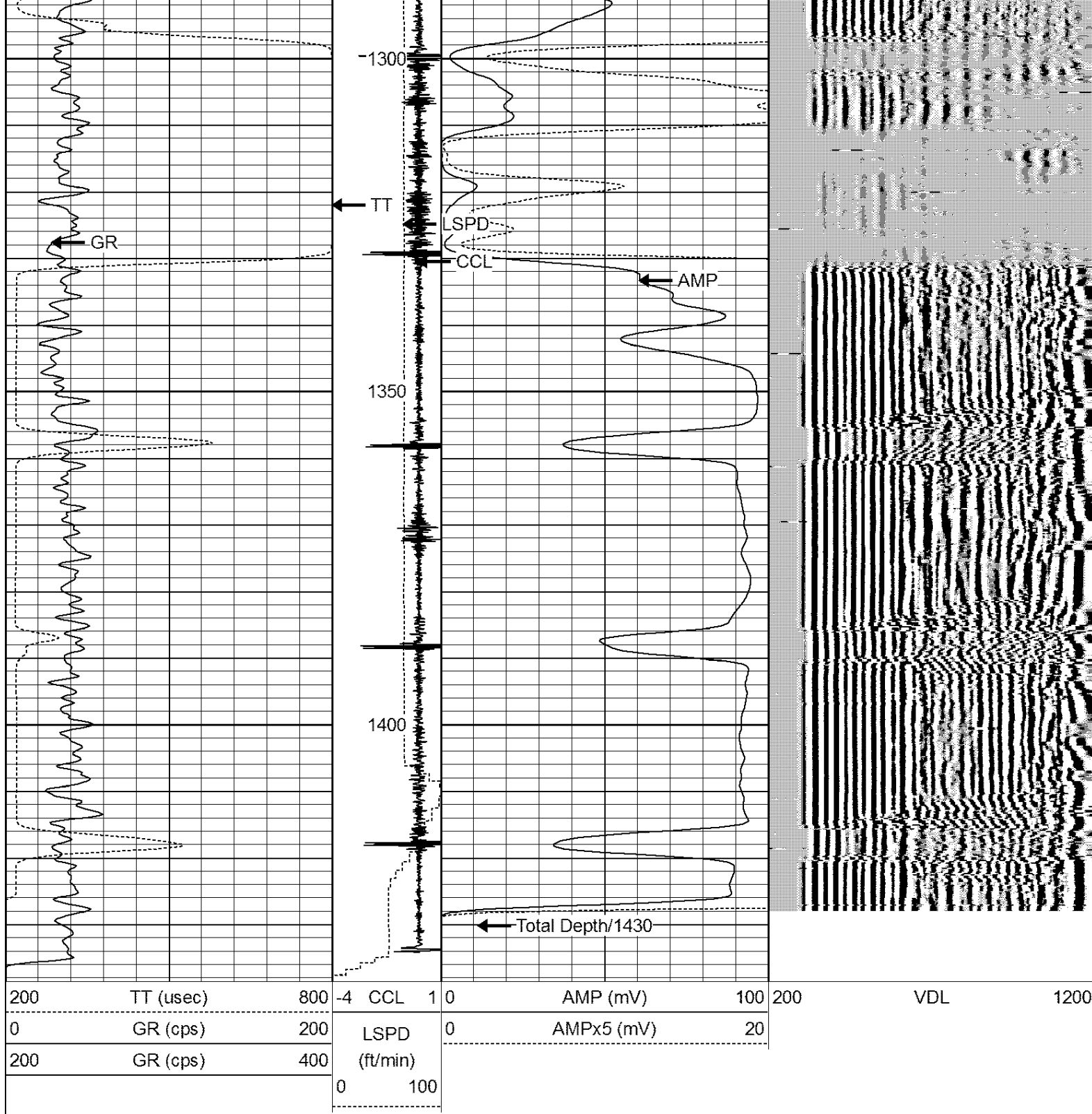












**WARRIOR**  
ENERGY SERVICES

Company KERR MCGEE OIL & GAS

Well BAKER RED V 1-14A

Field WATTENBERG

County WELD

State COLORADO