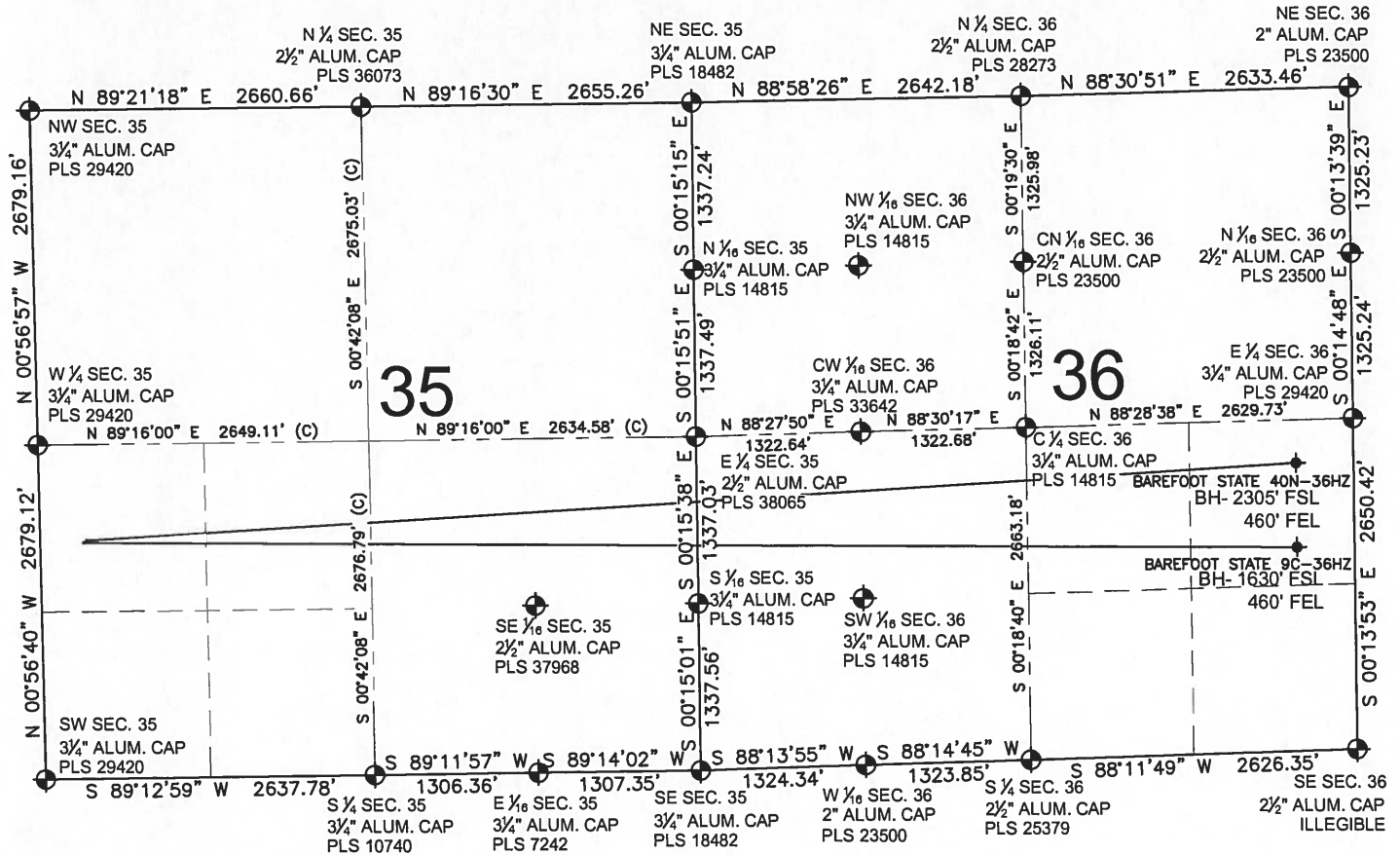


BAREFOOT STATE 9C-36HZ MULTI-WELL PLAN

SECTION 35, TOWNSHIP 3 NORTH, RANGE 68 WEST, 6TH P.M.



NOTES:

BAREFOOT STATE 9C-36HZ TO BE AT 1890' FSL, 349' FWL.
 BOTTOM HOLE AT 1630' FSL & 460' FEL, SEC 36
 BAREFOOT STATE 40N-36HZ TO BE AT 1907' FSL, 373' FWL.
 BOTTOM HOLE AT 2305' FSL & 460' FEL, SEC 36

LEGEND

- ⊕ = EXISTING MONUMENT
- = PROPOSED WELL
- ⬮ = BOTTOM HOLE
- ◆ = EXISTING WELL
- BH = BOTTOM HOLE

PREPARED BY:

PFS



Petroleum Field Services, LLC
 1801 W. 13th Ave.
 Denver, CO 80204

KERR-MCGEE OIL & GAS ONSHORE LP

FIELD DATE:
08-08-13

DRAWING DATE:
09-10-13

SURFACE LOCATION:

NW 1/4, SW 1/4, SEC. 35, T3N, R68W, 6TH P.M.
 WELD COUNTY, COLORADO

