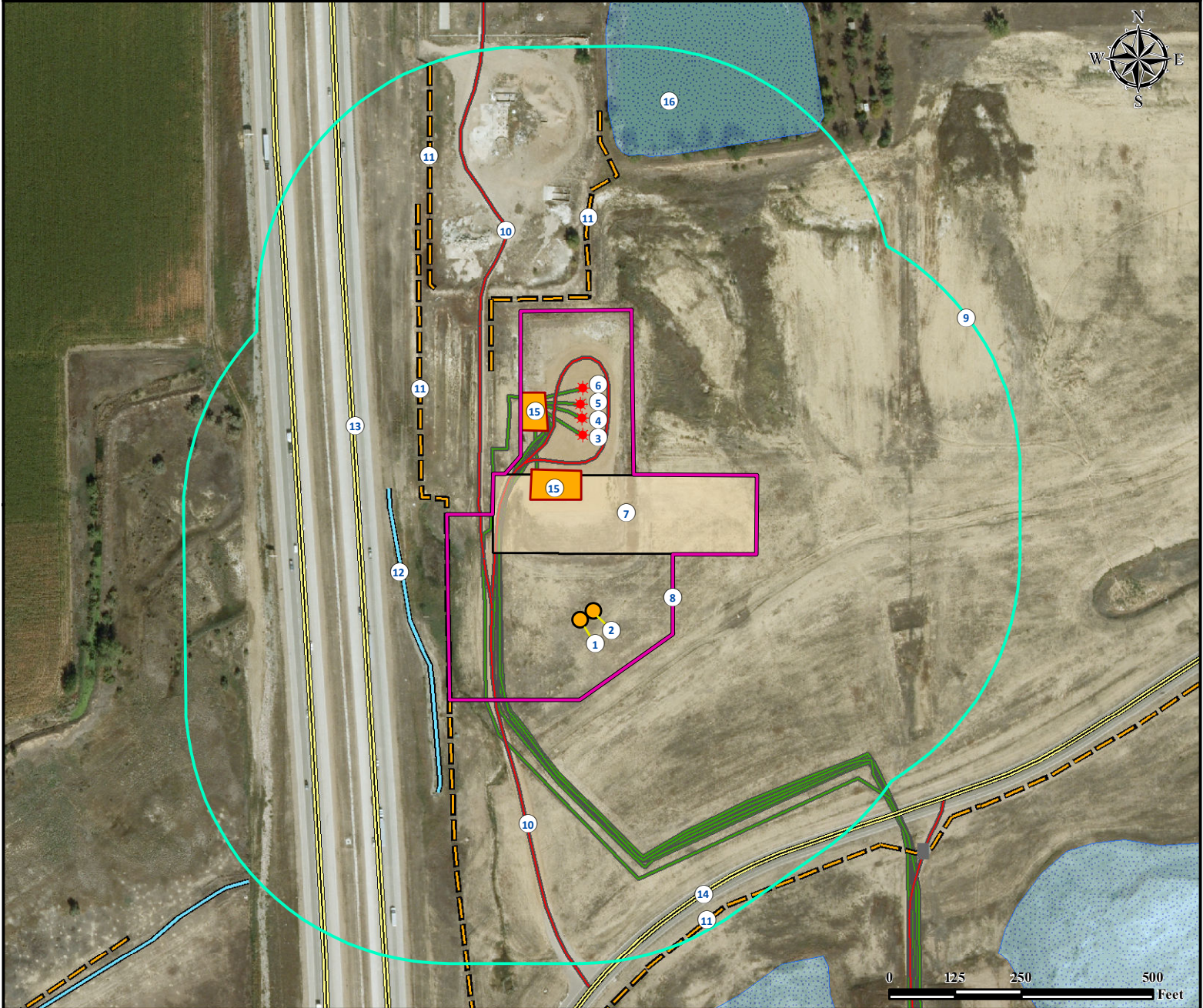


# Location Drawing

## BAREFOOT STATE 9C-35HZ

### Horizontal Multi Well Pad

**NW¼ SW¼ SECTION 35, TOWNSHIP 3 NORTH, RANGE 68 WEST OF THE 6TH PRINCIPAL MERIDIAN**



- |   |   |  |
|---|---|--|
| 1. Proposed Well BAREFOOT STATE 9C-36HZ.  | 7. Proposed BAREFOOT STATE 9C-36HZ Facility is ±127' N.   | 13. I-25 is ±409' W.                             |
| 2. Proposed Well BAREFOOT STATE 40N-36HZ. | 8. Operational Disturbance Area.                          | 14. I-25 Frontage Road/Co Rd 9.5 is ±563' SE.    |
| 3. Existing Well CARMA 12-35 is ±351' N.  | 9. 500' Radius.   | 15. Existing Facilities are ±229' N and 364' NW. |
| 4. Existing Well CARMA 11-35 is ±382' N.  | 10. Private Roads are ±169' W and ±170' NW                | 16. Pond is ±887' N.                             |
| 5. Existing Well CARMA 22-35 is ±410' N.  | 11. Fences are ±250' W, ±502' NW, ±605' SE, and ±687' NW. |  |
| 6. Existing Well CARMA 32-35 is ±441' N.  | 12. Ditch is ±298' SW.                                    |  |

<b>Legend</b>	<ul style="list-style-type: none"> <li><span style="color: orange;">●</span> Proposed Well</li> <li><span style="color: red;">★</span> Existing Well</li> <li><span style="color: gray;">■</span> Gate</li> <li><span style="color: blue;">⚡</span> Water Well</li> </ul>	<ul style="list-style-type: none"> <li><span style="border: 2px solid magenta; display: inline-block; width: 15px; height: 10px;"></span> Disturbance Area</li> <li><span style="border: 2px solid cyan; display: inline-block; width: 15px; height: 10px;"></span> 500' Radius</li> <li><span style="background-color: lightblue; border: 1px solid blue; display: inline-block; width: 15px; height: 10px;"></span> Lake/Pond</li> <li><span style="border: 2px solid orange; display: inline-block; width: 15px; height: 10px;"></span> Facility Enclosure</li> </ul>	<ul style="list-style-type: none"> <li><span style="border-bottom: 2px dashed orange; display: inline-block; width: 20px;"></span> Fence</li> <li><span style="border-bottom: 2px solid blue; display: inline-block; width: 20px;"></span> Ditch</li> <li><span style="border-bottom: 2px solid green; display: inline-block; width: 20px;"></span> Pipeline</li> <li><span style="border-bottom: 2px solid yellow; display: inline-block; width: 20px;"></span> Public Road</li> <li><span style="border-bottom: 2px solid red; display: inline-block; width: 20px;"></span> Private Road</li> </ul>
---------------	---	--	---

**Reference Location**

\*\*All measurements are made from Reference Well BAREFOOT STATE 9C-35HZ\*\*

Lat: 40.180193° Long: -104.978293° (NAD83)  
Elevation: 4861 Feet

Surface Use: Rangeland

Use our resources to find yours!  
[www.petro-fs.com](http://www.petro-fs.com)  
 (303) 928-7128

Field Date: 08/08/2013  
 Drafting Date: 09/11/2013  
 Drafter: GWB  
 Revisions: 2

Data Sources:  
 - Aerial courtesy of Anadarko Petroleum Corporation (2010)

Nearest Building Unit: >1000' NW

Prepared for: **Anadarko**  
 Petroleum Corporation

**KERR-MCGEE OIL & GAS ONSHORE LP**