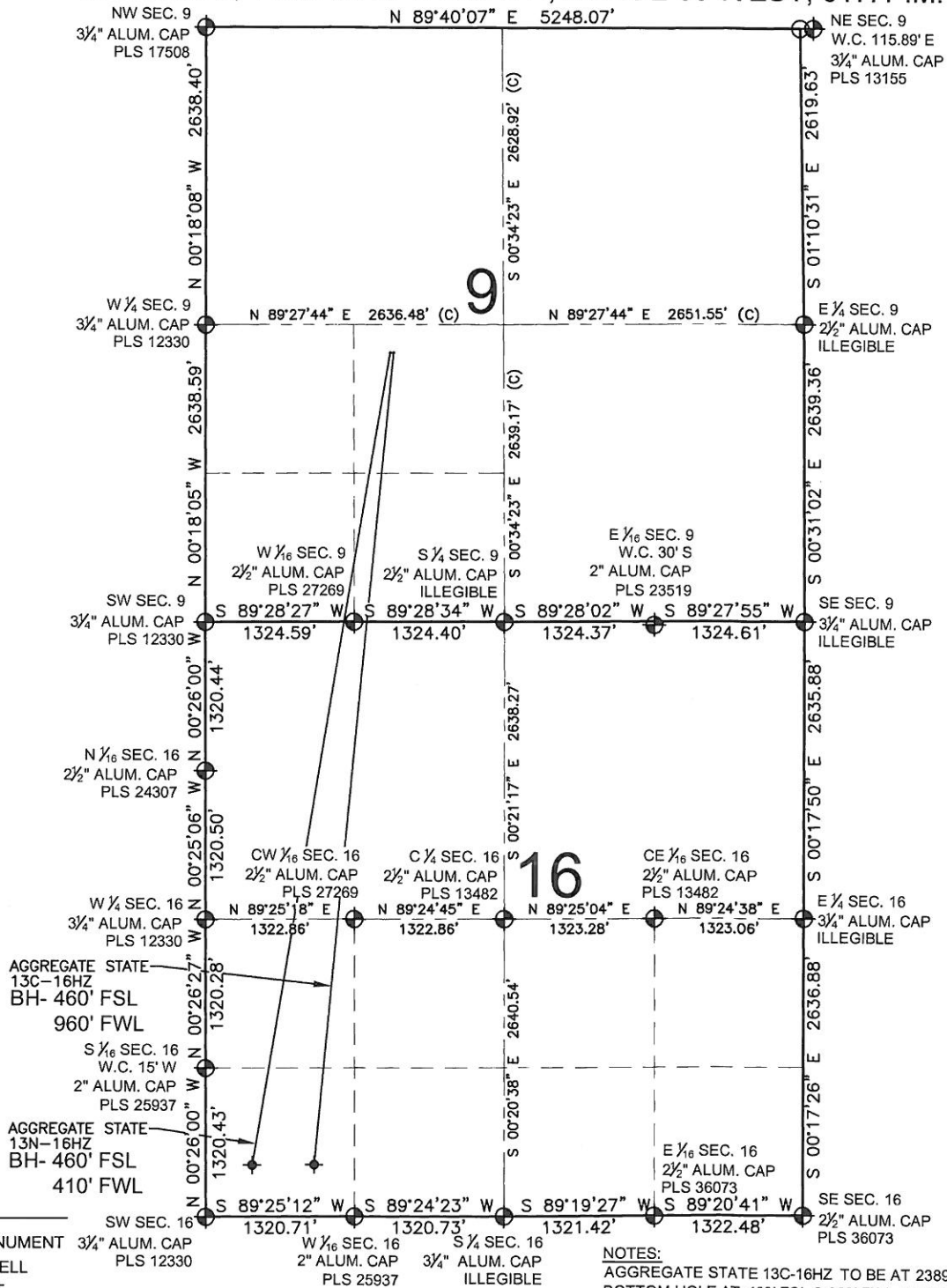


AGGREGATE STATE 13N-16HZ MULTI-WELL PLAN

SECTION 9, TOWNSHIP 2 NORTH, RANGE 66 WEST, 6TH P.M.



LEGEND

- ⊕ = EXISTING MONUMENT
- = PROPOSED WELL
- ⊕ = BOTTOM HOLE
- BH = BOTTOM HOLE

NOTES:

- AGGREGATE STATE 13C-16HZ TO BE AT 2389' FSL, 1669' FWL.
- BOTTOM HOLE AT 460' FSL & 960' FWL, SEC 16
- AGGREGATE STATE 13N-16HZ TO BE AT 2389' FSL, 1639' FWL.
- BOTTOM HOLE AT 460' FSL & 410' FWL, SEC 16

PREPARED BY:

PFS llc
Petroleum Field Services, LLC
1801 W. 13th Ave.
Denver, CO 80204

KERR-MCGEE OIL & GAS ONSHORE LP

FIELD DATE: 07-10-13	SURFACE LOCATION: NE 1/4 SW 1/4, SEC. 9, T2N, R66W, 6TH P.M. WELD COUNTY, COLORADO
DRAWING DATE: 08-05-13	