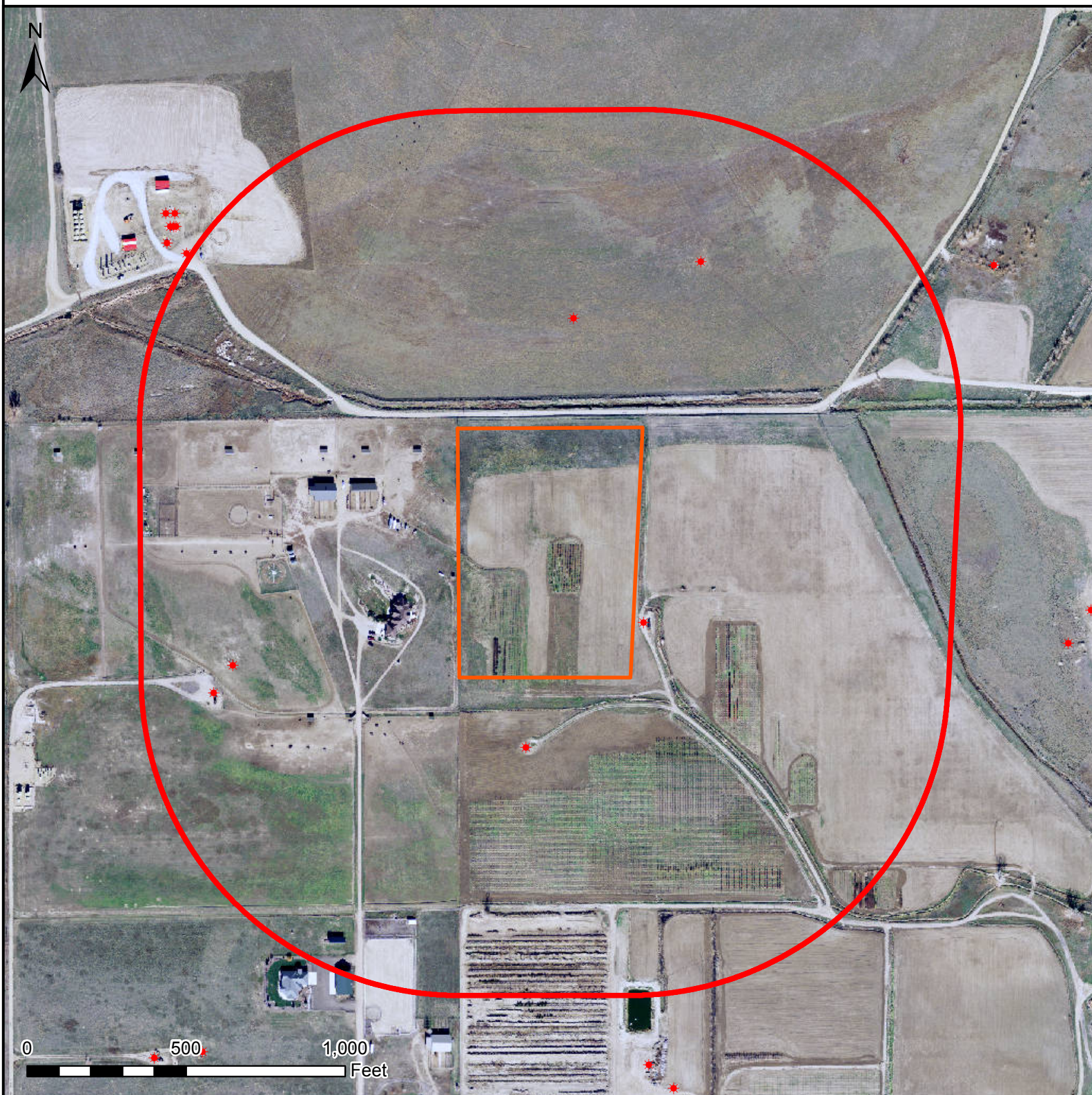


# HYDROLOGY MAP

## AGGREGATE STATE 13N-16HZ



### Legend

- Well pad (proposed)
- 1000' buffer
- Existing oil/gas well (COGCC)

### Nearest Surface Water Feature

Ditch: 308' N  
Ditch elevation: 4890'  
Well elevation: 4904'

All measurements are made from  
the reference well.



Date created: 11/4/2013  
Created by: APC Regulatory GIS  
Scale: 1:5,000  
Projection: NAD83 UTM 13N