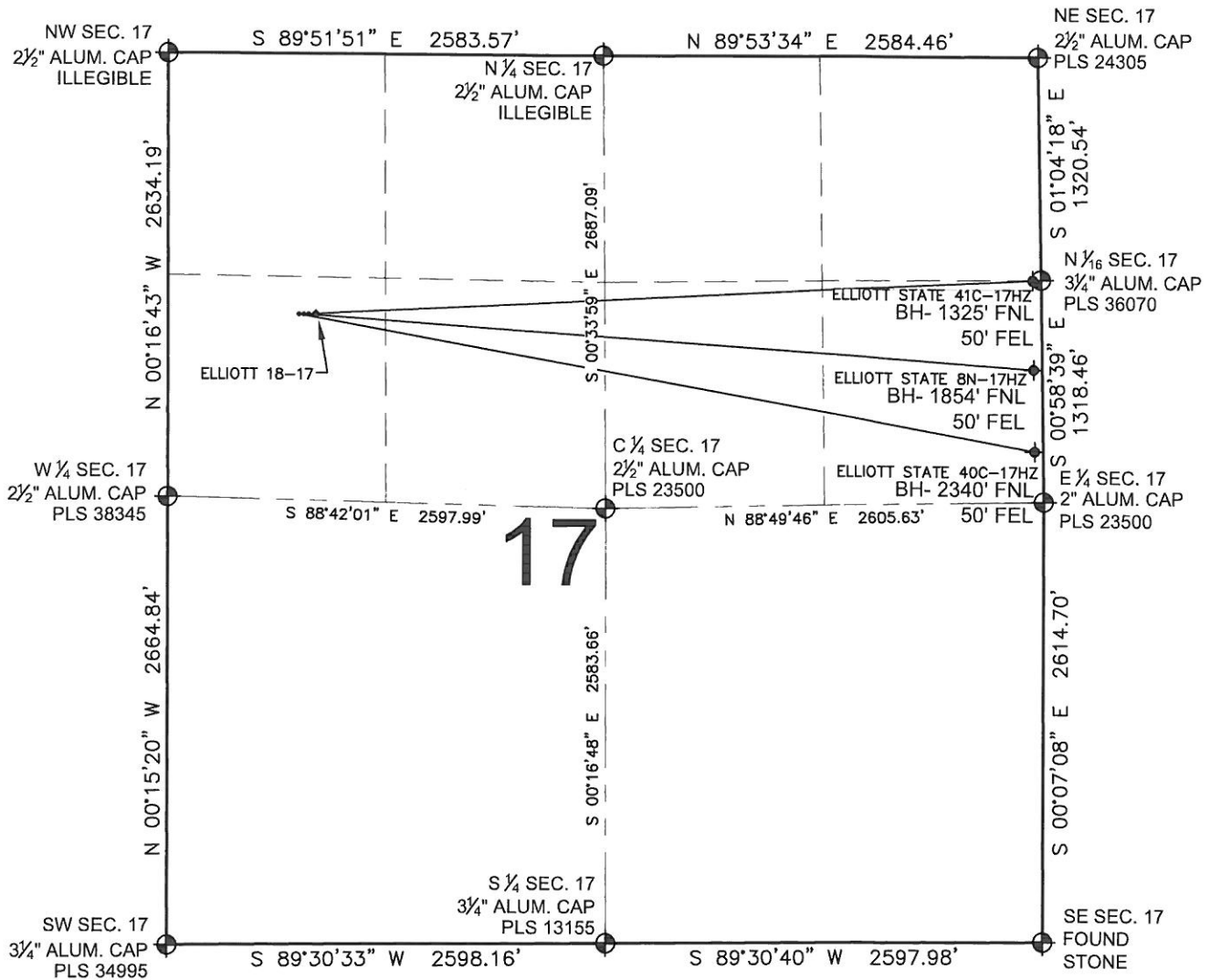


# ELLIOTT STATE 41C-17HZ MULTI-WELL PLAN

SECTION 17, TOWNSHIP 3 NORTH, RANGE 67 WEST, 6TH P.M.



**NOTES:**

ELLIOTT STATE 40C-17HZ TO BE AT 1546' FNL, 779' FWL.  
 BOTTOM HOLE AT 2340' FNL & 50' FEL.  
 ELLIOTT STATE 8N-17HZ TO BE AT 1546' FNL, 809' FWL.  
 BOTTOM HOLE AT 1854' FNL & 50' FEL.  
 ELLIOTT STATE 41C-17HZ TO BE AT 1546' FNL, 839' FWL.  
 BOTTOM HOLE AT 1325' FNL & 50' FEL.  
 ELLIOTT 18-17 IS 1546' FNL, 889' FWL.

**LEGEND**

- ◆ = EXISTING MONUMENT      ◆ = BOTTOM HOLE      BH= BOTTOM HOLE
- = PROPOSED WELL        ◆ = EXISTING WELL



PREPARED BY:

**PFS** llc  
 Petroleum Field Services, LLC  
 1801 W. 13th Ave.  
 Denver, CO 80204

KERR-MCGEE OIL & GAS ONSHORE LP

FIELD DATE:  
05-30-13

DRAWING DATE:  
07-01-13

SURFACE LOCATION:

SW 1/4 NW 1/4, SEC. 17, T3N, R67W, 6TH P.M.  
 WELD COUNTY, COLORADO