

BONANZA CREEK ENERGY OPERATING

Well Name: **Park T-P-4HC**

Surface Location: Park T-4 Pad Sec.4-T4N-R63W
North American Datum 1983 , US State Plane 1983 , Colorado Northern Zone

Ground Elevation: 4615.0

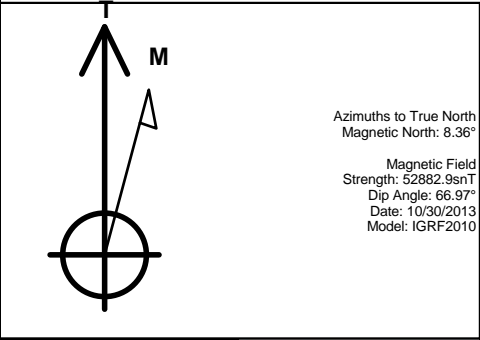
+N-S	+E-W	Northing	Easting	Latitude	Longitude	Slot
0.0	0.0	1366673.22	3296160.78	40.335049	-104.437618	

RKB - 13' WELL @ 4628.0ft (RKB - 13')

WELLBORE TARGET DETAILS

Name	TVD	+N/-S	+E/-W	Shape
------	-----	-------	-------	-------

SHL 439'FSL & 1056'FEL	1.0	0.0	0.0	Point
BHL 470'FNL & 1172'FEL	6557.0	4506.5	44.3	Point
T1 531'FSL & 1130'FEL	6557.0	91.1	-71.1	Point



Park T-4 Pad Sec.4-T4N-R63W
Park T-P-4HC
Plan #1 (10-30-13)
8:46, October 31 2013

Park T-P-4HC

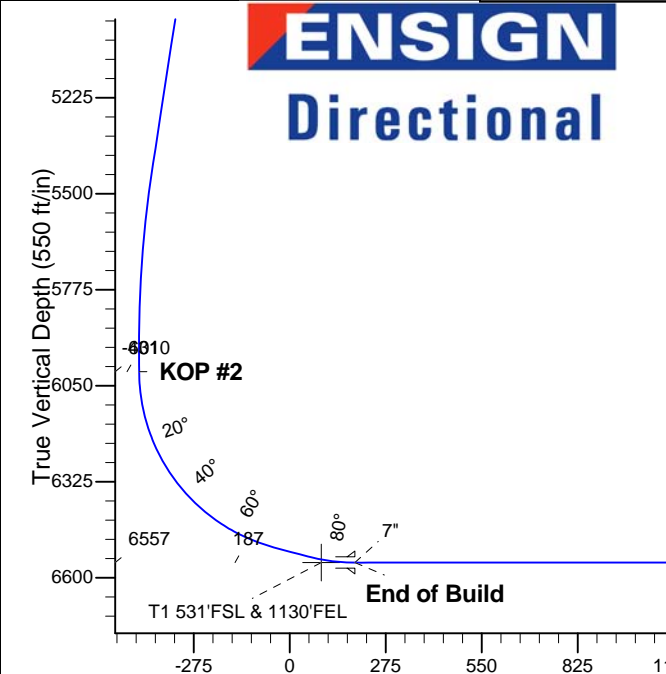
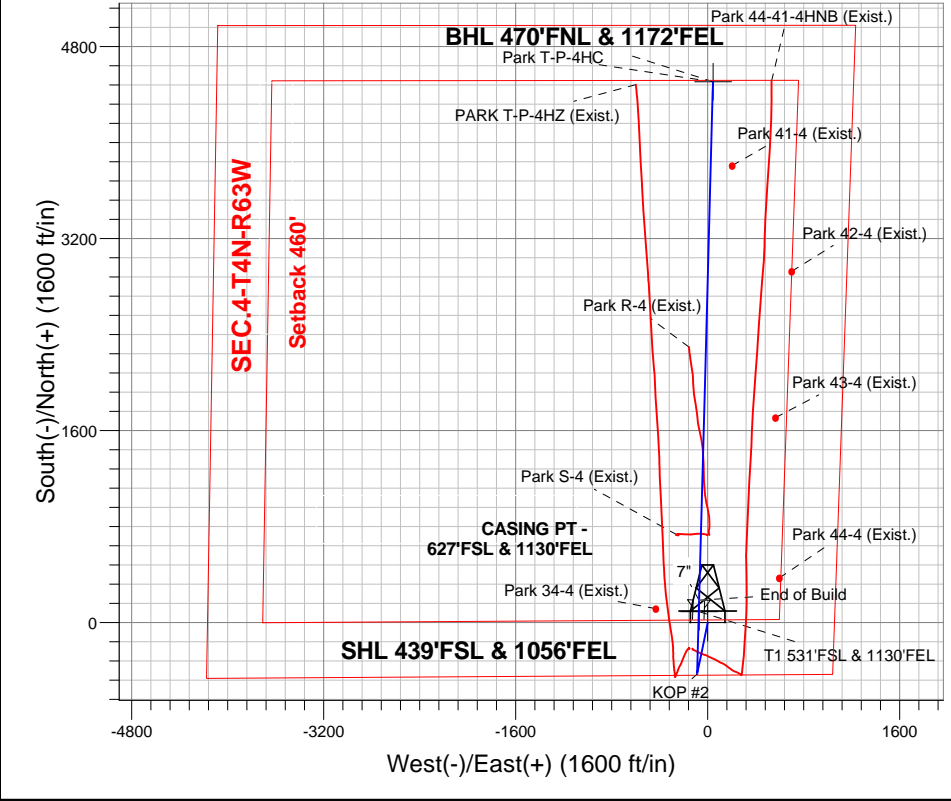
Plan #1 (10-30-13)

8:46, October 31 2013

ANNOTATIONS

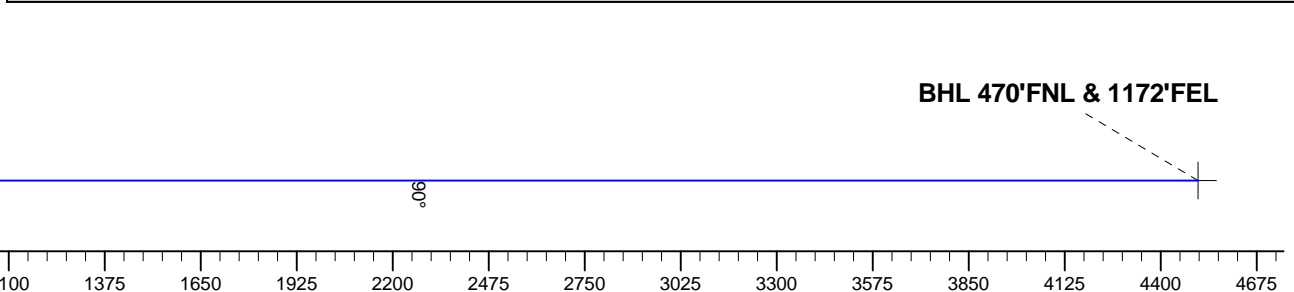
TVD	MD	Annotation
-----	----	------------

2600.0	2600.0	KOP #1
6010.3	6042.0	KOP #2
6557.0	6960.2	End of Build



	SECTION DETAILS
--	-----------------

Sec	MD	Inc	Azi	TVD	+N/-S	+E/-W	DLeg	TFace	VSec	Target
1	0.0	0.00	0.00	0.0	0.0	0.0	0.00	0.00	0.0	
2	2600.0	0.00	0.00	2600.0	0.0	0.0	0.00	0.00	0.0	
3	3035.6	8.71	191.57	3033.9	-32.4	-6.6	2.00	191.57	-32.4	
4	5496.1	8.71	191.57	5466.1	-397.5	-81.4	0.00	0.00	-398.3	
5	5931.7	0.00	0.00	5900.0	-429.9	-88.0	2.00	180.00	-430.7	
6	6042.0	0.00	0.00	6010.2	-429.9	-88.0	0.00	0.00	-430.7	
7	6723.8	75.00	1.54	6513.4	-44.0	-77.7	11.00	1.54	-44.7	
8	6823.8	75.00	1.54	6539.3	52.6	-75.1	0.00	0.00	51.8	
9	6960.2	90.00	1.54	6557.0	187.3	-71.5	11.00	0.00	186.6	
10	11280.9	90.00	1.54	6557.0	4506.5	44.3	0.00	0.00	4506.7	BHL 470'FNL & 1172'FEL



Vertical Section at 0.56° (550 ft/in)



BONANZA CREEK ENERGY OPERATING

SEC.4-T4N-R63W

Park T-4 Pad Sec.4-T4N-R63W

Park T-P-4HC

Wellbore #1

Plan: Plan #1 (10-30-13)

Standard Planning Report

31 October, 2013

Plan Sections										
Measured Depth (ft)	Inclination (°)	Azimuth (°)	Vertical Depth (ft)	+N/-S (ft)	+E/-W (ft)	Dogleg Rate (°/100ft)	Build Rate (°/100ft)	Turn Rate (°/100ft)	TFO (°)	Target
0.0	0.00	0.00	0.0	0.0	0.0	0.00	0.00	0.00	0.00	
2,600.0	0.00	0.00	2,600.0	0.0	0.0	0.00	0.00	0.00	0.00	
3,035.6	8.71	191.57	3,033.9	-32.4	-6.6	2.00	2.00	0.00	191.57	
5,496.1	8.71	191.57	5,466.1	-397.5	-81.4	0.00	0.00	0.00	0.00	
5,931.7	0.00	0.00	5,900.0	-429.9	-88.0	2.00	-2.00	0.00	180.00	
6,042.0	0.00	0.00	6,010.2	-429.9	-88.0	0.00	0.00	0.00	0.00	
6,723.8	75.00	1.54	6,513.4	-44.0	-77.7	11.00	11.00	0.00	1.54	
6,823.8	75.00	1.54	6,539.3	52.6	-75.1	0.00	0.00	0.00	0.00	
6,960.2	90.00	1.54	6,557.0	187.3	-71.5	11.00	11.00	0.00	0.00	
11,280.9	90.00	1.54	6,557.0	4,506.5	44.3	0.00	0.00	0.00	0.00	BHL 470°FNL & 117°

Database:	Landmark	Local Co-ordinate Reference:	Well Park T-P-4HC
Company:	BONANZA CREEK ENERGY OPERATING	TVD Reference:	WELL @ 4628.0ft (RKB - 13')
Project:	SEC.4-T4N-R63W	MD Reference:	WELL @ 4628.0ft (RKB - 13')
Site:	Park T-4 Pad Sec.4-T4N-R63W	North Reference:	True
Well:	Park T-P-4HC	Survey Calculation Method:	Minimum Curvature
Wellbore:	Wellbore #1		
Design:	Plan #1 (10-30-13)		

Planned Survey									
Measured Depth (ft)	Inclination (°)	Azimuth (°)	Vertical Depth (ft)	+N/-S (ft)	+E/-W (ft)	Vertical Section (ft)	Dogleg Rate (°/100ft)	Build Rate (°/100ft)	Turn Rate (°/100ft)
0.0	0.00	0.00	0.0	0.0	0.0	0.0	0.00	0.00	0.00
1.0	0.00	0.00	1.0	0.0	0.0	0.0	0.00	0.00	0.00
SHL 439'FSL & 1056'FEL									
100.0	0.00	0.00	100.0	0.0	0.0	0.0	0.00	0.00	0.00
200.0	0.00	0.00	200.0	0.0	0.0	0.0	0.00	0.00	0.00
300.0	0.00	0.00	300.0	0.0	0.0	0.0	0.00	0.00	0.00
400.0	0.00	0.00	400.0	0.0	0.0	0.0	0.00	0.00	0.00
500.0	0.00	0.00	500.0	0.0	0.0	0.0	0.00	0.00	0.00
600.0	0.00	0.00	600.0	0.0	0.0	0.0	0.00	0.00	0.00
700.0	0.00	0.00	700.0	0.0	0.0	0.0	0.00	0.00	0.00
800.0	0.00	0.00	800.0	0.0	0.0	0.0	0.00	0.00	0.00
900.0	0.00	0.00	900.0	0.0	0.0	0.0	0.00	0.00	0.00
1,000.0	0.00	0.00	1,000.0	0.0	0.0	0.0	0.00	0.00	0.00
1,100.0	0.00	0.00	1,100.0	0.0	0.0	0.0	0.00	0.00	0.00
1,200.0	0.00	0.00	1,200.0	0.0	0.0	0.0	0.00	0.00	0.00
1,300.0	0.00	0.00	1,300.0	0.0	0.0	0.0	0.00	0.00	0.00
1,400.0	0.00	0.00	1,400.0	0.0	0.0	0.0	0.00	0.00	0.00
1,500.0	0.00	0.00	1,500.0	0.0	0.0	0.0	0.00	0.00	0.00
1,600.0	0.00	0.00	1,600.0	0.0	0.0	0.0	0.00	0.00	0.00
1,700.0	0.00	0.00	1,700.0	0.0	0.0	0.0	0.00	0.00	0.00
1,800.0	0.00	0.00	1,800.0	0.0	0.0	0.0	0.00	0.00	0.00
1,900.0	0.00	0.00	1,900.0	0.0	0.0	0.0	0.00	0.00	0.00
2,000.0	0.00	0.00	2,000.0	0.0	0.0	0.0	0.00	0.00	0.00
2,100.0	0.00	0.00	2,100.0	0.0	0.0	0.0	0.00	0.00	0.00
2,200.0	0.00	0.00	2,200.0	0.0	0.0	0.0	0.00	0.00	0.00
2,300.0	0.00	0.00	2,300.0	0.0	0.0	0.0	0.00	0.00	0.00
2,400.0	0.00	0.00	2,400.0	0.0	0.0	0.0	0.00	0.00	0.00
2,500.0	0.00	0.00	2,500.0	0.0	0.0	0.0	0.00	0.00	0.00
2,600.0	0.00	0.00	2,600.0	0.0	0.0	0.0	0.00	0.00	0.00
KOP #1									
2,700.0	2.00	191.57	2,700.0	-1.7	-0.3	-1.7	2.00	2.00	0.00
2,800.0	4.00	191.57	2,799.8	-6.8	-1.4	-6.9	2.00	2.00	0.00
2,900.0	6.00	191.57	2,899.5	-15.4	-3.1	-15.4	2.00	2.00	0.00
3,000.0	8.00	191.57	2,998.7	-27.3	-5.6	-27.4	2.00	2.00	0.00
3,035.6	8.71	191.57	3,033.9	-32.4	-6.6	-32.4	2.00	2.00	0.00
3,100.0	8.71	191.57	3,097.6	-41.9	-8.6	-42.0	0.00	0.00	0.00
3,200.0	8.71	191.57	3,196.4	-56.8	-11.6	-56.9	0.00	0.00	0.00
3,300.0	8.71	191.57	3,295.3	-71.6	-14.7	-71.8	0.00	0.00	0.00
3,400.0	8.71	191.57	3,394.1	-86.5	-17.7	-86.6	0.00	0.00	0.00
3,500.0	8.71	191.57	3,493.0	-101.3	-20.7	-101.5	0.00	0.00	0.00
3,600.0	8.71	191.57	3,591.8	-116.1	-23.8	-116.4	0.00	0.00	0.00
3,700.0	8.71	191.57	3,690.7	-131.0	-26.8	-131.2	0.00	0.00	0.00
3,800.0	8.71	191.57	3,789.5	-145.8	-29.8	-146.1	0.00	0.00	0.00
3,900.0	8.71	191.57	3,888.3	-160.7	-32.9	-161.0	0.00	0.00	0.00
4,000.0	8.71	191.57	3,987.2	-175.5	-35.9	-175.8	0.00	0.00	0.00
4,100.0	8.71	191.57	4,086.0	-190.3	-39.0	-190.7	0.00	0.00	0.00
4,200.0	8.71	191.57	4,184.9	-205.2	-42.0	-205.6	0.00	0.00	0.00
4,300.0	8.71	191.57	4,283.7	-220.0	-45.0	-220.4	0.00	0.00	0.00
4,400.0	8.71	191.57	4,382.6	-234.9	-48.1	-235.3	0.00	0.00	0.00
4,500.0	8.71	191.57	4,481.4	-249.7	-51.1	-250.2	0.00	0.00	0.00
4,600.0	8.71	191.57	4,580.3	-264.5	-54.1	-265.1	0.00	0.00	0.00
4,700.0	8.71	191.57	4,679.1	-279.4	-57.2	-279.9	0.00	0.00	0.00
4,800.0	8.71	191.57	4,778.0	-294.2	-60.2	-294.8	0.00	0.00	0.00
4,900.0	8.71	191.57	4,876.8	-309.1	-63.3	-309.7	0.00	0.00	0.00

Database:	Landmark	Local Co-ordinate Reference:	Well Park T-P-4HC
Company:	BONANZA CREEK ENERGY OPERATING	TVD Reference:	WELL @ 4628.0ft (RKB - 13')
Project:	SEC.4-T4N-R63W	MD Reference:	WELL @ 4628.0ft (RKB - 13')
Site:	Park T-4 Pad Sec.4-T4N-R63W	North Reference:	True
Well:	Park T-P-4HC	Survey Calculation Method:	Minimum Curvature
Wellbore:	Wellbore #1		
Design:	Plan #1 (10-30-13)		

Planned Survey									
Measured Depth (ft)	Inclination (°)	Azimuth (°)	Vertical Depth (ft)	+N/-S (ft)	+E/-W (ft)	Vertical Section (ft)	Dogleg Rate (°/100ft)	Build Rate (°/100ft)	Turn Rate (°/100ft)
5,000.0	8.71	191.57	4,975.7	-323.9	-66.3	-324.5	0.00	0.00	0.00
5,100.0	8.71	191.57	5,074.5	-338.7	-69.3	-339.4	0.00	0.00	0.00
5,200.0	8.71	191.57	5,173.3	-353.6	-72.4	-354.3	0.00	0.00	0.00
5,300.0	8.71	191.57	5,272.2	-368.4	-75.4	-369.1	0.00	0.00	0.00
5,400.0	8.71	191.57	5,371.0	-383.3	-78.5	-384.0	0.00	0.00	0.00
5,496.1	8.71	191.57	5,466.1	-397.5	-81.4	-398.3	0.00	0.00	0.00
5,500.0	8.63	191.57	5,469.9	-398.1	-81.5	-398.9	2.00	-2.00	0.00
5,600.0	6.63	191.57	5,569.0	-411.1	-84.2	-411.9	2.00	-2.00	0.00
5,700.0	4.63	191.57	5,668.5	-420.7	-86.1	-421.5	2.00	-2.00	0.00
5,800.0	2.63	191.57	5,768.3	-426.9	-87.4	-427.8	2.00	-2.00	0.00
5,900.0	0.63	191.57	5,868.3	-429.7	-88.0	-430.6	2.00	-2.00	0.00
5,931.7	0.00	0.00	5,900.0	-429.9	-88.0	-430.7	2.00	-2.00	0.00
6,000.0	0.00	0.00	5,968.3	-429.9	-88.0	-430.7	0.00	0.00	0.00
6,042.0	0.00	0.00	6,010.3	-429.9	-88.0	-430.7	0.00	0.00	0.00
KOP #2									
6,100.0	6.38	1.54	6,068.1	-426.7	-87.9	-427.5	11.00	11.00	0.00
6,200.0	17.38	1.54	6,165.8	-406.1	-87.4	-407.0	11.00	11.00	0.00
6,300.0	28.38	1.54	6,257.8	-367.3	-86.3	-368.1	11.00	11.00	0.00
6,400.0	39.38	1.54	6,340.7	-311.7	-84.8	-312.5	11.00	11.00	0.00
6,500.0	50.38	1.54	6,411.5	-241.2	-82.9	-242.0	11.00	11.00	0.00
6,600.0	61.38	1.54	6,467.5	-158.6	-80.7	-159.4	11.00	11.00	0.00
6,700.0	72.38	1.54	6,506.7	-66.8	-78.3	-67.6	11.00	11.00	0.00
6,723.8	75.00	1.54	6,513.4	-44.0	-77.7	-44.7	11.00	11.00	0.00
6,800.0	75.00	1.54	6,533.1	29.6	-75.7	28.8	0.00	0.00	0.00
6,823.8	75.00	1.54	6,539.3	52.6	-75.1	51.8	0.00	0.00	0.00
6,865.1	79.54	1.54	6,548.3	92.8	-74.0	92.1	11.00	11.00	0.00
T1 531'FSL & 1130'FEL									
6,900.0	83.38	1.54	6,553.5	127.3	-73.1	126.6	11.00	11.00	0.00
6,960.2	90.00	1.54	6,557.0	187.4	-71.5	186.7	11.00	11.00	0.00
End of Build - 7"									
7,000.0	90.00	1.54	6,557.0	227.2	-70.4	226.5	0.00	0.00	0.00
7,100.0	90.00	1.54	6,557.0	327.1	-67.7	326.4	0.00	0.00	0.00
7,200.0	90.00	1.54	6,557.0	427.1	-65.0	426.4	0.00	0.00	0.00
7,300.0	90.00	1.54	6,557.0	527.0	-62.3	526.4	0.00	0.00	0.00
7,400.0	90.00	1.54	6,557.0	627.0	-59.7	626.4	0.00	0.00	0.00
7,500.0	90.00	1.54	6,557.0	727.0	-57.0	726.4	0.00	0.00	0.00
7,600.0	90.00	1.54	6,557.0	826.9	-54.3	826.4	0.00	0.00	0.00
7,700.0	90.00	1.54	6,557.0	926.9	-51.6	926.4	0.00	0.00	0.00
7,800.0	90.00	1.54	6,557.0	1,026.9	-49.0	1,026.3	0.00	0.00	0.00
7,900.0	90.00	1.54	6,557.0	1,126.8	-46.3	1,126.3	0.00	0.00	0.00
8,000.0	90.00	1.54	6,557.0	1,226.8	-43.6	1,226.3	0.00	0.00	0.00
8,100.0	90.00	1.54	6,557.0	1,326.8	-40.9	1,326.3	0.00	0.00	0.00
8,200.0	90.00	1.54	6,557.0	1,426.7	-38.2	1,426.3	0.00	0.00	0.00
8,300.0	90.00	1.54	6,557.0	1,526.7	-35.6	1,526.3	0.00	0.00	0.00
8,400.0	90.00	1.54	6,557.0	1,626.7	-32.9	1,626.2	0.00	0.00	0.00
8,500.0	90.00	1.54	6,557.0	1,726.6	-30.2	1,726.2	0.00	0.00	0.00
8,600.0	90.00	1.54	6,557.0	1,826.6	-27.5	1,826.2	0.00	0.00	0.00
8,700.0	90.00	1.54	6,557.0	1,926.5	-24.8	1,926.2	0.00	0.00	0.00
8,800.0	90.00	1.54	6,557.0	2,026.5	-22.2	2,026.2	0.00	0.00	0.00
8,900.0	90.00	1.54	6,557.0	2,126.5	-19.5	2,126.2	0.00	0.00	0.00
9,000.0	90.00	1.54	6,557.0	2,226.4	-16.8	2,226.2	0.00	0.00	0.00
9,100.0	90.00	1.54	6,557.0	2,326.4	-14.1	2,326.1	0.00	0.00	0.00
9,200.0	90.00	1.54	6,557.0	2,426.4	-11.4	2,426.1	0.00	0.00	0.00

Planned Survey										
Measured Depth (ft)	Inclination (°)	Azimuth (°)	Vertical Depth (ft)	+N-S (ft)	+E-W (ft)	Vertical Section (ft)	Dogleg Rate (°/100ft)	Build Rate (°/100ft)	Turn Rate (°/100ft)	
9,300.0	90.00	1.54	6,557.0	2,526.3	-8.8	2,526.1	0.00	0.00	0.00	
9,400.0	90.00	1.54	6,557.0	2,626.3	-6.1	2,626.1	0.00	0.00	0.00	
9,500.0	90.00	1.54	6,557.0	2,726.3	-3.4	2,726.1	0.00	0.00	0.00	
9,600.0	90.00	1.54	6,557.0	2,826.2	-0.7	2,826.1	0.00	0.00	0.00	
9,700.0	90.00	1.54	6,557.0	2,926.2	2.0	2,926.1	0.00	0.00	0.00	
9,800.0	90.00	1.54	6,557.0	3,026.1	4.6	3,026.0	0.00	0.00	0.00	
9,900.0	90.00	1.54	6,557.0	3,126.1	7.3	3,126.0	0.00	0.00	0.00	
10,000.0	90.00	1.54	6,557.0	3,226.1	10.0	3,226.0	0.00	0.00	0.00	
10,100.0	90.00	1.54	6,557.0	3,326.0	12.7	3,326.0	0.00	0.00	0.00	
10,200.0	90.00	1.54	6,557.0	3,426.0	15.4	3,426.0	0.00	0.00	0.00	
10,300.0	90.00	1.54	6,557.0	3,526.0	18.0	3,526.0	0.00	0.00	0.00	
10,400.0	90.00	1.54	6,557.0	3,625.9	20.7	3,626.0	0.00	0.00	0.00	
10,500.0	90.00	1.54	6,557.0	3,725.9	23.4	3,725.9	0.00	0.00	0.00	
10,600.0	90.00	1.54	6,557.0	3,825.9	26.1	3,825.9	0.00	0.00	0.00	
10,700.0	90.00	1.54	6,557.0	3,925.8	28.8	3,925.9	0.00	0.00	0.00	
10,800.0	90.00	1.54	6,557.0	4,025.8	31.4	4,025.9	0.00	0.00	0.00	
10,900.0	90.00	1.54	6,557.0	4,125.8	34.1	4,125.9	0.00	0.00	0.00	
11,000.0	90.00	1.54	6,557.0	4,225.7	36.8	4,225.9	0.00	0.00	0.00	
11,100.0	90.00	1.54	6,557.0	4,325.7	39.5	4,325.9	0.00	0.00	0.00	
11,200.0	90.00	1.54	6,557.0	4,425.6	42.2	4,425.8	0.00	0.00	0.00	
11,280.9	90.00	1.54	6,557.0	4,506.5	44.3	4,506.7	0.00	0.00	0.00	
BHL 470'FNL & 1172'FEL										

Casing Points					
Measured Depth (ft)	Vertical Depth (ft)		Name	Casing Diameter (")	Hole Diameter (")
6,960.2	6,557.0	7"		7	7-1/2

Database:	Landmark	Local Co-ordinate Reference:	Well Park T-P-4HC
Company:	BONANZA CREEK ENERGY OPERATING	TVD Reference:	WELL @ 4628.0ft (RKB - 13')
Project:	SEC.4-T4N-R63W	MD Reference:	WELL @ 4628.0ft (RKB - 13')
Site:	Park T-4 Pad Sec.4-T4N-R63W	North Reference:	True
Well:	Park T-P-4HC	Survey Calculation Method:	Minimum Curvature
Wellbore:	Wellbore #1		
Design:	Plan #1 (10-30-13)		

Plan Annotations				
Measured Depth (ft)	Vertical Depth (ft)	Local Coordinates		Comment
		+N/-S (ft)	+E/-W (ft)	
2,600.0	2,600.0	0.0	0.0	KOP #1
6,042.0	6,010.3	-429.9	-88.0	KOP #2
6,960.2	6,557.0	187.4	-71.5	End of Build



BONANZA CREEK ENERGY OPERATING

SEC.4-T4N-R63W

Park T-4 Pad Sec.4-T4N-R63W

Park T-P-4HC

Wellbore #1

Plan #1 (10-30-13)

Anticollision Report

31 October, 2013

Company:	BONANZA CREEK ENERGY OPERATING	Local Co-ordinate Reference:	Well Park T-P-4HC
Project:	SEC.4-T4N-R63W	TVD Reference:	WELL @ 4628.0ft (RKB - 13')
Reference Site:	Park T-4 Pad Sec.4-T4N-R63W	MD Reference:	WELL @ 4628.0ft (RKB - 13')
Site Error:	0.0ft	North Reference:	True
Reference Well:	Park T-P-4HC	Survey Calculation Method:	Minimum Curvature
Well Error:	0.0ft	Output errors are at	2.00 sigma
Reference Wellbore	Wellbore #1	Database:	Landmark
Reference Design:	Plan #1 (10-30-13)	Offset TVD Reference:	Offset Datum

Offset Design													Offset Site Error:	0.0 ft
Survey Program: 6700-UNKNOWN													Offset Well Error:	0.0 ft
Reference		Offset		Semi Major Axis			Distance							Warning
Measured Depth (ft)	Vertical Depth (ft)	Measured Depth (ft)	Vertical Depth (ft)	Reference (ft)	Offset (ft)	Highside Toolface (°)	Offset Wellbore Centre +N/-S (ft)	+E/-W (ft)	Between Centres (ft)	Between Ellipses (ft)	Minimum Separation (ft)	Separation Factor		
800.0	800.0	809.0	809.0	1.7	16.2	-74.87	117.0	-432.7	448.2	430.3	17.87	25.087		
900.0	900.0	909.0	909.0	1.9	18.2	-74.87	117.0	-432.7	448.2	428.1	20.09	22.309		
1,000.0	1,000.0	1,009.0	1,009.0	2.1	20.2	-74.87	117.0	-432.7	448.2	425.9	22.32	20.085		
1,100.0	1,100.0	1,109.0	1,109.0	2.4	22.2	-74.87	117.0	-432.7	448.2	423.7	24.54	18.264		
1,200.0	1,200.0	1,209.0	1,209.0	2.6	24.2	-74.87	117.0	-432.7	448.2	421.4	26.76	16.746		
1,300.0	1,300.0	1,309.0	1,309.0	2.8	26.2	-74.87	117.0	-432.7	448.2	419.2	28.99	15.461		
1,400.0	1,400.0	1,409.0	1,409.0	3.0	28.2	-74.87	117.0	-432.7	448.2	417.0	31.21	14.359		
1,500.0	1,500.0	1,509.0	1,509.0	3.3	30.2	-74.87	117.0	-432.7	448.2	414.8	33.44	13.404		
1,600.0	1,600.0	1,609.0	1,609.0	3.5	32.2	-74.87	117.0	-432.7	448.2	412.5	35.66	12.567		
1,700.0	1,700.0	1,709.0	1,709.0	3.7	34.2	-74.87	117.0	-432.7	448.2	410.3	37.89	11.830		
1,800.0	1,800.0	1,809.0	1,809.0	3.9	36.2	-74.87	117.0	-432.7	448.2	408.1	40.11	11.173		
1,900.0	1,900.0	1,909.0	1,909.0	4.2	38.2	-74.87	117.0	-432.7	448.2	405.9	42.34	10.586		
2,000.0	2,000.0	2,009.0	2,009.0	4.4	40.2	-74.87	117.0	-432.7	448.2	403.6	44.56	10.058		
2,100.0	2,100.0	2,109.0	2,109.0	4.6	42.2	-74.87	117.0	-432.7	448.2	401.4	46.79	9.580		
2,200.0	2,200.0	2,209.0	2,209.0	4.8	44.2	-74.87	117.0	-432.7	448.2	399.2	49.01	9.145		
2,300.0	2,300.0	2,309.0	2,309.0	5.1	46.2	-74.87	117.0	-432.7	448.2	397.0	51.24	8.748		
2,400.0	2,400.0	2,409.0	2,409.0	5.3	48.2	-74.87	117.0	-432.7	448.2	394.7	53.46	8.384		
2,500.0	2,500.0	2,509.0	2,509.0	5.5	50.2	-74.87	117.0	-432.7	448.2	392.5	55.69	8.049		
2,600.0	2,600.0	2,609.0	2,609.0	5.7	52.2	-74.87	117.0	-432.7	448.2	390.3	57.91	7.739		
2,700.0	2,700.0	2,709.0	2,709.0	5.9	54.2	93.78	117.0	-432.7	448.3	388.2	60.11	7.459		
2,800.0	2,799.8	2,808.8	2,808.8	6.1	56.2	94.44	117.0	-432.7	448.7	386.4	62.27	7.206		
2,900.0	2,899.5	2,908.5	2,908.5	6.3	58.2	95.52	117.0	-432.7	449.5	385.0	64.43	6.975		
3,000.0	2,998.7	3,007.7	3,007.7	6.5	60.2	97.03	117.0	-432.7	450.8	384.2	66.60	6.769		
3,100.0	3,097.6	3,106.6	3,106.6	6.7	62.1	98.87	117.0	-432.7	452.9	384.1	68.76	6.586		
3,200.0	3,196.4	3,205.4	3,205.4	6.9	64.1	100.73	117.0	-432.7	455.5	384.5	70.95	6.420		
3,300.0	3,295.3	3,304.3	3,304.3	7.1	66.1	102.57	117.0	-432.7	458.6	385.4	73.14	6.270		
3,400.0	3,394.1	3,403.1	3,403.1	7.3	68.1	104.38	117.0	-432.7	462.2	386.8	75.33	6.135		
3,500.0	3,493.0	3,502.0	3,502.0	7.6	70.0	106.17	117.0	-432.7	466.2	388.6	77.54	6.012		
3,600.0	3,591.8	3,600.8	3,600.8	7.8	72.0	107.92	117.0	-432.7	470.7	390.9	79.75	5.902		
3,700.0	3,690.7	3,699.7	3,699.7	8.1	74.0	109.64	117.0	-432.7	475.6	393.6	81.96	5.803		
3,800.0	3,789.5	3,798.5	3,798.5	8.4	76.0	111.32	117.0	-432.7	481.0	396.8	84.18	5.713		
3,900.0	3,888.3	3,897.3	3,897.3	8.7	77.9	112.97	117.0	-432.7	486.7	400.3	86.40	5.633		
4,000.0	3,987.2	3,996.2	3,996.2	8.9	79.9	114.57	117.0	-432.7	492.9	404.3	88.62	5.562		
4,100.0	4,086.0	4,095.0	4,095.0	9.2	81.9	116.14	117.0	-432.7	499.4	408.6	90.84	5.498		
4,200.0	4,184.9	4,193.9	4,193.9	9.5	83.9	117.66	117.0	-432.7	506.4	413.3	93.06	5.441		
4,300.0	4,283.7	4,292.7	4,292.7	9.8	85.9	119.15	117.0	-432.7	513.6	418.3	95.28	5.391		
4,400.0	4,382.6	4,391.6	4,391.6	10.1	87.8	120.59	117.0	-432.7	521.2	423.7	97.50	5.346		
4,500.0	4,481.4	4,490.4	4,490.4	10.5	89.8	121.99	117.0	-432.7	529.2	429.5	99.71	5.307		
4,600.0	4,580.3	4,589.3	4,589.3	10.8	91.8	123.35	117.0	-432.7	537.4	435.5	101.93	5.272		
4,700.0	4,679.1	4,688.1	4,688.1	11.1	93.8	124.67	117.0	-432.7	546.0	441.8	104.14	5.242		
4,800.0	4,778.0	4,787.0	4,787.0	11.4	95.7	125.94	117.0	-432.7	554.8	448.4	106.35	5.216		
4,900.0	4,876.8	4,885.8	4,885.8	11.7	97.7	127.18	117.0	-432.7	563.9	455.3	108.57	5.194		
5,000.0	4,975.7	4,984.7	4,984.7	12.1	99.7	128.38	117.0	-432.7	573.2	462.4	110.77	5.175		
5,100.0	5,074.5	5,083.5	5,083.5	12.4	101.7	129.54	117.0	-432.7	582.8	469.8	112.98	5.159		
5,200.0	5,173.3	5,182.3	5,182.3	12.7	103.6	130.66	117.0	-432.7	592.6	477.4	115.18	5.145		
5,300.0	5,272.2	5,281.2	5,281.2	13.1	105.6	131.74	117.0	-432.7	602.7	485.3	117.39	5.134		
5,400.0	5,371.0	5,380.0	5,380.0	13.4	107.6	132.79	117.0	-432.7	612.9	493.3	119.59	5.125		
5,500.0	5,469.9	5,478.9	5,478.9	13.7	109.6	133.82	117.0	-432.7	623.4	501.6	121.80	5.118		
5,600.0	5,569.0	5,578.0	5,578.0	14.0	111.6	134.81	117.0	-432.7	632.7	508.5	124.23	5.093		
5,700.0	5,668.5	5,677.5	5,677.5	14.3	113.6	135.53	117.0	-432.7	639.7	513.1	126.61	5.053		
5,800.0	5,768.3	5,777.3	5,777.3	14.5	115.5	135.99	117.0	-432.7	644.2	515.3	128.93	4.997		
5,900.0	5,868.3	5,877.3	5,877.3	14.7	117.5	136.20	117.0	-432.7	646.3	515.1	131.17	4.927		

CC - Min centre to center distance or convergent point, SF - min separation factor, ES - min ellipse separation

Company:	BONANZA CREEK ENERGY OPERATING	Local Co-ordinate Reference:	Well Park T-P-4HC
Project:	SEC.4-T4N-R63W	TVD Reference:	WELL @ 4628.0ft (RKB - 13')
Reference Site:	Park T-4 Pad Sec.4-T4N-R63W	MD Reference:	WELL @ 4628.0ft (RKB - 13')
Site Error:	0.0ft	North Reference:	True
Reference Well:	Park T-P-4HC	Survey Calculation Method:	Minimum Curvature
Well Error:	0.0ft	Output errors are at	2.00 sigma
Reference Wellbore	Wellbore #1	Database:	Landmark
Reference Design:	Plan #1 (10-30-13)	Offset TVD Reference:	Offset Datum

Offset Design Park T-4 Pad Sec.4-T4N-R63W - Park 34-4 (Exist.) - Wellbore #1 - Wellbore #1												Offset Site Error:	0.0 ft
Survey Program: 6700-UNKNOWN												Offset Well Error:	0.0 ft
Reference		Offset		Semi Major Axis			Distance				Warning		
Measured Depth (ft)	Vertical Depth (ft)	Measured Depth (ft)	Vertical Depth (ft)	Reference (ft)	Offset (ft)	Highside Toolface (°)	Offset Wellbore Centre +N/-S (ft)	+E/-W (ft)	Between Centres (ft)	Between Ellipses (ft)		Minimum Separation (ft)	Separation Factor
6,000.0	5,968.3	5,977.3	5,977.3	14.8	119.5	-32.22	117.0	-432.7	646.4	513.0	133.41	4.845	
6,100.0	6,068.1	6,077.1	6,077.1	15.0	121.5	-34.08	117.0	-432.7	643.7	508.8	134.93	4.771	
6,200.0	6,165.8	6,174.8	6,174.8	15.0	123.5	-36.23	117.0	-432.7	626.8	493.2	133.62	4.691	
6,300.0	6,257.8	6,266.8	6,266.8	14.9	125.3	-40.69	117.0	-432.7	595.4	465.0	130.41	4.566	
6,400.0	6,340.7	6,349.7	6,349.7	14.7	127.0	-47.95	117.0	-432.7	552.0	423.7	128.30	4.303	
6,500.0	6,411.5	6,420.5	6,420.5	14.6	128.4	-58.24	117.0	-432.7	500.6	369.7	130.91	3.824	
6,600.0	6,467.5	6,476.5	6,476.5	14.5	129.5	-70.47	117.0	-432.7	447.0	309.2	137.82	3.243	
6,700.0	6,506.7	6,515.7	6,515.7	14.5	130.3	-81.65	117.0	-432.7	399.2	255.7	143.48	2.782	
6,800.0	6,533.1	6,542.1	6,542.1	14.8	130.8	-86.79	117.0	-432.7	367.5	222.1	145.40	2.528	
6,879.4	6,549.1	6,558.1	6,558.1	15.1	131.2	-90.00	117.0	-432.7	359.2	212.9	146.30	2.455 CC, ES, SF	
6,900.0	6,553.5	6,562.5	6,562.5	15.2	131.3	-90.37	117.0	-432.7	359.8	213.3	146.48	2.456	
7,000.0	6,557.0	6,566.0	6,566.0	15.9	131.3	-90.00	117.0	-432.7	378.7	231.5	147.23	2.572	
7,100.0	6,557.0	6,566.0	6,566.0	16.8	131.3	-90.00	117.0	-432.7	421.2	273.1	148.09	2.844	
7,200.0	6,557.0	6,566.0	6,566.0	17.8	131.3	-90.00	117.0	-432.7	481.0	331.9	149.11	3.226	
7,300.0	6,557.0	6,566.0	6,566.0	19.0	131.3	-90.00	117.0	-432.7	552.6	402.3	150.27	3.677	
7,400.0	6,557.0	6,566.0	6,566.0	20.2	131.3	-90.00	117.0	-432.7	631.9	480.3	151.55	4.170	
7,500.0	6,557.0	6,566.0	6,566.0	21.6	131.3	-90.00	117.0	-432.7	716.4	563.5	152.92	4.685	
7,600.0	6,557.0	6,566.0	6,566.0	23.1	131.3	-90.00	117.0	-432.7	804.5	650.1	154.37	5.212	
7,700.0	6,557.0	6,566.0	6,566.0	24.6	131.3	-90.00	117.0	-432.7	895.1	739.2	155.88	5.742	
7,800.0	6,557.0	6,566.0	6,566.0	26.1	131.3	-90.00	117.0	-432.7	987.5	830.1	157.44	6.272	

Company:	BONANZA CREEK ENERGY OPERATING	Local Co-ordinate Reference:	Well Park T-P-4HC
Project:	SEC.4-T4N-R63W	TVD Reference:	WELL @ 4628.0ft (RKB - 13')
Reference Site:	Park T-4 Pad Sec.4-T4N-R63W	MD Reference:	WELL @ 4628.0ft (RKB - 13')
Site Error:	0.0ft	North Reference:	True
Reference Well:	Park T-P-4HC	Survey Calculation Method:	Minimum Curvature
Well Error:	0.0ft	Output errors are at	2.00 sigma
Reference Wellbore	Wellbore #1	Database:	Landmark
Reference Design:	Plan #1 (10-30-13)	Offset TVD Reference:	Offset Datum

Offset Design Park T-4 Pad Sec.4-T4N-R63W - Park 41-4 (Exist.) - Wellbore #1 - Wellbore #1												Offset Site Error: 0.0 ft		
Survey Program: 6700-UNKNOWN												Offset Well Error: 0.0 ft		
Reference		Offset		Semi Major Axis			Distance							Warning
Measured Depth (ft)	Vertical Depth (ft)	Measured Depth (ft)	Vertical Depth (ft)	Reference (ft)	Offset (ft)	Highside Toolface (°)	Offset Wellbore Centre +N/-S (ft)	+E/-W (ft)	Between Centres (ft)	Between Ellipses (ft)	Minimum Separation (ft)	Separation Factor		
9,700.0	6,557.0	6,504.0	6,504.0	59.8	130.1	90.00	3,807.4	202.9	903.8	713.9	189.90	4.760		
9,800.0	6,557.0	6,504.0	6,504.0	61.7	130.1	90.00	3,807.4	202.9	806.0	614.3	191.75	4.203		
9,900.0	6,557.0	6,504.0	6,504.0	63.5	130.1	90.00	3,807.4	202.9	708.8	515.2	193.61	3.661		
10,000.0	6,557.0	6,504.0	6,504.0	65.4	130.1	90.00	3,807.4	202.9	612.5	417.0	195.47	3.133		
10,100.0	6,557.0	6,504.0	6,504.0	67.3	130.1	90.00	3,807.4	202.9	517.6	320.2	197.34	2.623		
10,200.0	6,557.0	6,504.0	6,504.0	69.1	130.1	90.00	3,807.4	202.9	425.0	225.8	199.21	2.134		
10,300.0	6,557.0	6,504.0	6,504.0	71.0	130.1	90.00	3,807.4	202.9	336.7	135.6	201.08	1.675		
10,400.0	6,557.0	6,504.0	6,504.0	72.9	130.1	90.00	3,807.4	202.9	257.2	54.2	202.95	1.267	Level 3	
10,500.0	6,557.0	6,504.0	6,504.0	74.8	130.1	90.00	3,807.4	202.9	197.2	-7.7	204.82	0.963	Level 1	
10,586.3	6,557.0	6,504.0	6,504.0	76.4	130.1	90.00	3,807.4	202.9	177.3	-29.2	206.44	0.859	Level 1, CC, ES, SF	
10,600.0	6,557.0	6,504.0	6,504.0	76.6	130.1	90.00	3,807.4	202.9	177.8	-28.9	206.70	0.860	Level 1	
10,700.0	6,557.0	6,504.0	6,504.0	78.5	130.1	90.00	3,807.4	202.9	210.6	2.0	208.58	1.010	Level 2	
10,800.0	6,557.0	6,504.0	6,504.0	80.4	130.1	90.00	3,807.4	202.9	277.7	67.2	210.46	1.319	Level 3	
10,900.0	6,557.0	6,504.0	6,504.0	82.3	130.1	90.00	3,807.4	202.9	360.4	148.0	212.34	1.697		
11,000.0	6,557.0	6,504.0	6,504.0	84.1	130.1	90.00	3,807.4	202.9	450.1	235.9	214.22	2.101		
11,100.0	6,557.0	6,504.0	6,504.0	86.0	130.1	90.00	3,807.4	202.9	543.5	327.4	216.11	2.515		
11,200.0	6,557.0	6,504.0	6,504.0	87.9	130.1	90.00	3,807.4	202.9	638.8	420.8	217.99	2.931		
11,280.9	6,557.0	6,504.0	6,504.0	89.1	130.1	90.00	3,807.4	202.9	716.9	497.7	219.22	3.270		

Company:	BONANZA CREEK ENERGY OPERATING	Local Co-ordinate Reference:	Well Park T-P-4HC
Project:	SEC.4-T4N-R63W	TVD Reference:	WELL @ 4628.0ft (RKB - 13')
Reference Site:	Park T-4 Pad Sec.4-T4N-R63W	MD Reference:	WELL @ 4628.0ft (RKB - 13')
Site Error:	0.0ft	North Reference:	True
Reference Well:	Park T-P-4HC	Survey Calculation Method:	Minimum Curvature
Well Error:	0.0ft	Output errors are at	2.00 sigma
Reference Wellbore	Wellbore #1	Database:	Landmark
Reference Design:	Plan #1 (10-30-13)	Offset TVD Reference:	Offset Datum

Offset Design Park T-4 Pad Sec.4-T4N-R63W - Park 42-4 (Exist.) - Wellbore #1 - Wellbore #1												Offset Site Error:	0.0 ft
Survey Program: 6700-UNKNOWN												Offset Well Error:	0.0 ft
Reference	Offset	Semi Major Axis		Distance									
Measured Depth (ft)	Vertical Depth (ft)	Measured Depth (ft)	Vertical Depth (ft)	Reference (ft)	Offset (ft)	Highside Toolface (°)	Offset Wellbore Centre +N/-S (ft)	+E/-W (ft)	Between Centres (ft)	Between Ellipses (ft)	Minimum Separation (ft)	Separation Factor	Warning
9,100.0	6,557.0	6,592.0	6,592.0	48.8	131.8	90.00	2,925.8	699.1	931.6	751.0	180.61	5.158	
9,200.0	6,557.0	6,592.0	6,592.0	50.6	131.8	90.00	2,925.8	699.1	868.5	686.1	182.44	4.761	
9,300.0	6,557.0	6,592.0	6,592.0	52.4	131.8	90.00	2,925.8	699.1	812.8	628.5	184.27	4.411	
9,400.0	6,557.0	6,592.0	6,592.0	54.3	131.8	90.00	2,925.8	699.1	766.2	580.0	186.11	4.117	
9,500.0	6,557.0	6,592.0	6,592.0	56.1	131.8	90.00	2,925.8	699.1	730.3	542.3	187.95	3.886	
9,600.0	6,557.0	6,592.0	6,592.0	58.0	131.8	90.00	2,925.8	699.1	706.9	517.1	189.80	3.724	
9,700.0	6,557.0	6,592.0	6,592.0	59.8	131.8	90.00	2,925.8	699.1	697.2	505.5	191.66	3.638	
9,718.3	6,557.0	6,592.0	6,592.0	60.2	131.8	90.00	2,925.8	699.1	696.9	504.9	191.99	3.630 CC, ES	
9,800.0	6,557.0	6,592.0	6,592.0	61.7	131.8	90.00	2,925.8	699.1	701.7	508.2	193.51	3.626 SF	
9,900.0	6,557.0	6,592.0	6,592.0	63.5	131.8	90.00	2,925.8	699.1	720.2	524.9	195.37	3.686	
10,000.0	6,557.0	6,592.0	6,592.0	65.4	131.8	90.00	2,925.8	699.1	751.7	554.5	197.23	3.811	
10,100.0	6,557.0	6,592.0	6,592.0	67.3	131.8	90.00	2,925.8	699.1	794.6	595.5	199.10	3.991	
10,200.0	6,557.0	6,592.0	6,592.0	69.1	131.8	90.00	2,925.8	699.1	847.2	646.2	200.97	4.216	
10,300.0	6,557.0	6,592.0	6,592.0	71.0	131.8	90.00	2,925.8	699.1	907.8	705.0	202.84	4.476	
10,400.0	6,557.0	6,592.0	6,592.0	72.9	131.8	90.00	2,925.8	699.1	974.9	770.2	204.71	4.762	

Company:	BONANZA CREEK ENERGY OPERATING	Local Co-ordinate Reference:	Well Park T-P-4HC
Project:	SEC.4-T4N-R63W	TVD Reference:	WELL @ 4628.0ft (RKB - 13')
Reference Site:	Park T-4 Pad Sec.4-T4N-R63W	MD Reference:	WELL @ 4628.0ft (RKB - 13')
Site Error:	0.0ft	North Reference:	True
Reference Well:	Park T-P-4HC	Survey Calculation Method:	Minimum Curvature
Well Error:	0.0ft	Output errors are at	2.00 sigma
Reference Wellbore	Wellbore #1	Database:	Landmark
Reference Design:	Plan #1 (10-30-13)	Offset TVD Reference:	Offset Datum

Offset Design Park T-4 Pad Sec.4-T4N-R63W - Park 43-4 (Exist.) - Wellbore #1 - Wellbore #1													Offset Site Error:	0.0 ft
Survey Program: 6700-UNKNOWN													Offset Well Error:	0.0 ft
Reference		Offset		Semi Major Axis			Distance							Warning
Measured Depth (ft)	Vertical Depth (ft)	Measured Depth (ft)	Vertical Depth (ft)	Reference (ft)	Offset (ft)	Highside Toolface (°)	Offset Wellbore Centre +N/-S (ft)	+E/-W (ft)	Between Centres (ft)	Between Ellipses (ft)	Minimum Separation (ft)	Separation Factor		
7,700.0	6,557.0	6,505.0	6,505.0	24.6	130.1	90.00	1,709.0	565.3	996.1	841.5	154.66	6.441	3.545 ES, SF	
7,800.0	6,557.0	6,505.0	6,505.0	26.1	130.1	90.00	1,709.0	565.3	918.0	761.7	156.22	5.876		
7,900.0	6,557.0	6,505.0	6,505.0	27.7	130.1	90.00	1,709.0	565.3	844.4	686.5	157.83	5.350		
8,000.0	6,557.0	6,505.0	6,505.0	29.4	130.1	90.00	1,709.0	565.3	776.7	617.3	159.48	4.870		
8,100.0	6,557.0	6,505.0	6,505.0	31.1	130.1	90.00	1,709.0	565.3	716.7	555.5	161.15	4.447		
8,200.0	6,557.0	6,505.0	6,505.0	32.8	130.1	90.00	1,709.0	565.3	666.3	503.5	162.85	4.092		
8,300.0	6,557.0	6,505.0	6,505.0	34.5	130.1	90.00	1,709.0	565.3	627.9	463.4	164.58	3.816		
8,400.0	6,557.0	6,505.0	6,505.0	36.2	130.1	90.00	1,709.0	565.3	603.9	437.5	166.32	3.631		
8,498.3	6,557.0	6,505.0	6,505.0	38.0	130.1	90.00	1,709.0	565.3	595.8	427.8	168.05	3.545 CC		
8,500.0	6,557.0	6,505.0	6,505.0	38.0	130.1	90.00	1,709.0	565.3	595.8	427.7	168.08	3.545 ES, SF		
8,600.0	6,557.0	6,505.0	6,505.0	39.8	130.1	90.00	1,709.0	565.3	604.4	434.6	169.85	3.559		
8,700.0	6,557.0	6,505.0	6,505.0	41.5	130.1	90.00	1,709.0	565.3	629.0	457.4	171.63	3.665		
8,800.0	6,557.0	6,505.0	6,505.0	43.3	130.1	90.00	1,709.0	565.3	667.8	494.4	173.43	3.851		
8,900.0	6,557.0	6,505.0	6,505.0	45.1	130.1	90.00	1,709.0	565.3	718.6	543.3	175.23	4.101		
9,000.0	6,557.0	6,505.0	6,505.0	47.0	130.1	90.00	1,709.0	565.3	778.9	601.8	177.05	4.399		
9,100.0	6,557.0	6,505.0	6,505.0	48.8	130.1	90.00	1,709.0	565.3	846.7	667.9	178.87	4.734		
9,200.0	6,557.0	6,505.0	6,505.0	50.6	130.1	90.00	1,709.0	565.3	920.5	739.8	180.70	5.094		
9,300.0	6,557.0	6,505.0	6,505.0	52.4	130.1	90.00	1,709.0	565.3	998.8	816.3	182.53	5.472		

Company:	BONANZA CREEK ENERGY OPERATING	Local Co-ordinate Reference:	Well Park T-P-4HC
Project:	SEC.4-T4N-R63W	TVD Reference:	WELL @ 4628.0ft (RKB - 13')
Reference Site:	Park T-4 Pad Sec.4-T4N-R63W	MD Reference:	WELL @ 4628.0ft (RKB - 13')
Site Error:	0.0ft	North Reference:	True
Reference Well:	Park T-P-4HC	Survey Calculation Method:	Minimum Curvature
Well Error:	0.0ft	Output errors are at	2.00 sigma
Reference Wellbore	Wellbore #1	Database:	Landmark
Reference Design:	Plan #1 (10-30-13)	Offset TVD Reference:	Offset Datum

Offset Design													Offset Site Error:	0.0 ft
Survey Program: 6700-UNKNOWN													Offset Well Error:	0.0 ft
Reference		Offset		Semi Major Axis			Distance							Warning
Measured Depth (ft)	Vertical Depth (ft)	Measured Depth (ft)	Vertical Depth (ft)	Reference (ft)	Offset (ft)	Highside Toolface (°)	Offset Wellbore Centre +N/-S (ft)	+E/-W (ft)	Between Centres (ft)	Between Ellipses (ft)	Minimum Separation (ft)	Separation Factor		
0.0	0.0	0.0	0.0	0.0	0.0	58.03	372.0	596.0	703.1					
100.0	100.0	74.0	74.0	0.1	1.5	58.03	372.0	596.0	702.6	701.0	1.59	441.161		
200.0	200.0	174.0	174.0	0.3	3.5	58.03	372.0	596.0	702.6	698.8	3.82	184.051		
300.0	300.0	274.0	274.0	0.6	5.5	58.03	372.0	596.0	702.6	696.5	6.04	116.281		
400.0	400.0	374.0	374.0	0.8	7.5	58.03	372.0	596.0	702.6	694.3	8.27	84.988		
500.0	500.0	474.0	474.0	1.0	9.5	58.03	372.0	596.0	702.6	692.1	10.49	66.966		
600.0	600.0	574.0	574.0	1.2	11.5	58.03	372.0	596.0	702.6	689.9	12.72	55.250		
700.0	700.0	674.0	674.0	1.5	13.5	58.03	372.0	596.0	702.6	687.6	14.94	47.023		
800.0	800.0	774.0	774.0	1.7	15.5	58.03	372.0	596.0	702.6	685.4	17.17	40.929		
900.0	900.0	874.0	874.0	1.9	17.5	58.03	372.0	596.0	702.6	683.2	19.39	36.233		
1,000.0	1,000.0	974.0	974.0	2.1	19.5	58.03	372.0	596.0	702.6	681.0	21.62	32.504		
1,100.0	1,100.0	1,074.0	1,074.0	2.4	21.5	58.03	372.0	596.0	702.6	678.7	23.84	29.471		
1,200.0	1,200.0	1,174.0	1,174.0	2.6	23.5	58.03	372.0	596.0	702.6	676.5	26.06	26.955		
1,300.0	1,300.0	1,274.0	1,274.0	2.8	25.5	58.03	372.0	596.0	702.6	674.3	28.29	24.835		
1,400.0	1,400.0	1,374.0	1,374.0	3.0	27.5	58.03	372.0	596.0	702.6	672.1	30.51	23.025		
1,500.0	1,500.0	1,474.0	1,474.0	3.3	29.5	58.03	372.0	596.0	702.6	669.8	32.74	21.460		
1,600.0	1,600.0	1,574.0	1,574.0	3.5	31.5	58.03	372.0	596.0	702.6	667.6	34.96	20.095		
1,700.0	1,700.0	1,674.0	1,674.0	3.7	33.5	58.03	372.0	596.0	702.6	665.4	37.19	18.892		
1,800.0	1,800.0	1,774.0	1,774.0	3.9	35.5	58.03	372.0	596.0	702.6	663.2	39.41	17.826		
1,900.0	1,900.0	1,874.0	1,874.0	4.2	37.5	58.03	372.0	596.0	702.6	660.9	41.64	16.874		
2,000.0	2,000.0	1,974.0	1,974.0	4.4	39.5	58.03	372.0	596.0	702.6	658.7	43.86	16.018		
2,100.0	2,100.0	2,074.0	2,074.0	4.6	41.5	58.03	372.0	596.0	702.6	656.5	46.09	15.244		
2,200.0	2,200.0	2,174.0	2,174.0	4.8	43.5	58.03	372.0	596.0	702.6	654.3	48.31	14.542		
2,300.0	2,300.0	2,274.0	2,274.0	5.1	45.5	58.03	372.0	596.0	702.6	652.0	50.54	13.902		
2,400.0	2,400.0	2,374.0	2,374.0	5.3	47.5	58.03	372.0	596.0	702.6	649.8	52.76	13.316		
2,500.0	2,500.0	2,474.0	2,474.0	5.5	49.5	58.03	372.0	596.0	702.6	647.6	54.99	12.777		
2,600.0	2,600.0	2,574.0	2,574.0	5.7	51.5	58.03	372.0	596.0	702.6	645.4	57.21	12.280		
2,700.0	2,700.0	2,674.0	2,674.0	5.9	53.5	-133.62	372.0	596.0	703.8	644.4	59.39	11.850		
2,800.0	2,799.8	2,773.8	2,773.8	6.1	55.5	-133.88	372.0	596.0	707.4	645.9	61.50	11.502		
2,900.0	2,899.5	2,873.5	2,873.5	6.3	57.5	-134.29	372.0	596.0	713.5	649.9	63.57	11.224		
3,000.0	2,998.7	2,972.7	2,972.7	6.5	59.5	-134.86	372.0	596.0	722.1	656.5	65.59	11.009		
3,100.0	3,097.6	3,071.6	3,071.6	6.7	61.4	-135.63	372.0	596.0	732.7	665.1	67.68	10.827		
3,200.0	3,196.4	3,170.4	3,170.4	6.9	63.4	-136.44	372.0	596.0	743.7	673.9	69.83	10.650		
3,300.0	3,295.3	3,269.3	3,269.3	7.1	65.4	-137.23	372.0	596.0	754.8	682.8	71.99	10.485		
3,400.0	3,394.1	3,368.1	3,368.1	7.3	67.4	-138.00	372.0	596.0	766.0	691.9	74.15	10.331		
3,500.0	3,493.0	3,467.0	3,467.0	7.6	69.3	-138.74	372.0	596.0	777.4	701.1	76.32	10.186		
3,600.0	3,591.8	3,565.8	3,565.8	7.8	71.3	-139.46	372.0	596.0	788.9	710.4	78.50	10.050		
3,700.0	3,690.7	3,664.7	3,664.7	8.1	73.3	-140.16	372.0	596.0	800.6	719.9	80.68	9.923		
3,800.0	3,789.5	3,763.5	3,763.5	8.4	75.3	-140.84	372.0	596.0	812.3	729.4	82.86	9.803		
3,900.0	3,888.3	3,862.3	3,862.3	8.7	77.2	-141.51	372.0	596.0	824.2	739.1	85.04	9.691		
4,000.0	3,987.2	3,961.2	3,961.2	8.9	79.2	-142.15	372.0	596.0	836.1	748.9	87.23	9.585		
4,100.0	4,086.0	4,060.0	4,060.0	9.2	81.2	-142.77	372.0	596.0	848.2	758.8	89.42	9.485		
4,200.0	4,184.9	4,158.9	4,158.9	9.5	83.2	-143.38	372.0	596.0	860.3	768.7	91.61	9.391		
4,300.0	4,283.7	4,257.7	4,257.7	9.8	85.2	-143.97	372.0	596.0	872.6	778.8	93.81	9.302		
4,400.0	4,382.6	4,356.6	4,356.6	10.1	87.1	-144.55	372.0	596.0	884.9	788.9	96.00	9.218		
4,500.0	4,481.4	4,455.4	4,455.4	10.5	89.1	-145.11	372.0	596.0	897.4	799.2	98.19	9.139		
4,600.0	4,580.3	4,554.3	4,554.3	10.8	91.1	-145.65	372.0	596.0	909.9	809.5	100.39	9.063		
4,700.0	4,679.1	4,653.1	4,653.1	11.1	93.1	-146.18	372.0	596.0	922.5	819.9	102.59	8.992		
4,800.0	4,778.0	4,752.0	4,752.0	11.4	95.0	-146.69	372.0	596.0	935.1	830.4	104.78	8.924		
4,900.0	4,876.8	4,850.8	4,850.8	11.7	97.0	-147.19	372.0	596.0	947.9	840.9	106.98	8.860		
5,000.0	4,975.7	4,949.7	4,949.7	12.1	99.0	-147.68	372.0	596.0	960.7	851.5	109.18	8.799		
5,100.0	5,074.5	5,048.5	5,048.5	12.4	101.0	-148.16	372.0	596.0	973.6	862.2	111.38	8.741		

CC - Min centre to center distance or convergent point, SF - min separation factor, ES - min ellipse separation

Company:	BONANZA CREEK ENERGY OPERATING	Local Co-ordinate Reference:	Well Park T-P-4HC
Project:	SEC.4-T4N-R63W	TVD Reference:	WELL @ 4628.0ft (RKB - 13')
Reference Site:	Park T-4 Pad Sec.4-T4N-R63W	MD Reference:	WELL @ 4628.0ft (RKB - 13')
Site Error:	0.0ft	North Reference:	True
Reference Well:	Park T-P-4HC	Survey Calculation Method:	Minimum Curvature
Well Error:	0.0ft	Output errors are at	2.00 sigma
Reference Wellbore	Wellbore #1	Database:	Landmark
Reference Design:	Plan #1 (10-30-13)	Offset TVD Reference:	Offset Datum

Offset Design Park T-4 Pad Sec.4-T4N-R63W - Park 44-4 (Exist.) - Wellbore #1 - Wellbore #1												Offset Site Error:	0.0 ft
Survey Program: 6700-UNKNOWN												Offset Well Error:	0.0 ft
Reference		Offset		Semi Major Axis			Distance						Warning
Measured Depth	Vertical Depth	Measured Depth	Vertical Depth	Reference	Offset	Highside Toolface	Offset Wellbore Centre		Between Centres	Between Ellipses	Minimum Separation	Separation Factor	
(ft)	(ft)	(ft)	(ft)	(ft)	(ft)	(°)	+N/-S (ft)	+E/-W (ft)	(ft)	(ft)	(ft)		
5,200.0	5,173.3	5,147.3	5,147.3	12.7	102.9	-148.62	372.0	596.0	986.5	872.9	113.58	8.686	
5,300.0	5,272.2	5,246.2	5,246.2	13.1	104.9	-149.07	372.0	596.0	999.5	883.7	115.77	8.633	
6,400.0	6,340.7	6,314.7	6,314.7	14.7	126.3	50.69	372.0	596.0	964.9	836.3	128.58	7.504	
6,500.0	6,411.5	6,385.5	6,385.5	14.6	127.7	58.71	372.0	596.0	914.9	784.7	130.18	7.028	
6,600.0	6,467.5	6,441.5	6,441.5	14.5	128.8	68.36	372.0	596.0	860.0	724.4	135.52	6.345	
6,700.0	6,506.7	6,480.7	6,480.7	14.5	129.6	78.21	372.0	596.0	804.5	663.2	141.34	5.692	
6,800.0	6,533.1	6,507.1	6,507.1	14.8	130.1	81.99	372.0	596.0	753.9	610.4	143.57	5.252	
6,900.0	6,553.5	6,527.5	6,527.5	15.2	130.6	87.38	372.0	596.0	712.4	566.8	145.63	4.892	
7,000.0	6,557.0	6,531.0	6,531.0	15.9	130.6	90.00	372.0	596.0	682.0	535.5	146.53	4.654	
7,100.0	6,557.0	6,531.0	6,531.0	16.8	130.6	90.00	372.0	596.0	665.3	517.9	147.39	4.514	
7,162.6	6,557.0	6,531.0	6,531.0	17.4	130.6	90.00	372.0	596.0	662.3	514.3	148.03	4.474 CC, ES	
7,200.0	6,557.0	6,531.0	6,531.0	17.8	130.6	90.00	372.0	596.0	663.4	515.0	148.41	4.470 SF	
7,300.0	6,557.0	6,531.0	6,531.0	19.0	130.6	90.00	372.0	596.0	676.4	526.8	149.57	4.522	
7,400.0	6,557.0	6,531.0	6,531.0	20.2	130.6	90.00	372.0	596.0	703.6	552.7	150.85	4.664	
7,500.0	6,557.0	6,531.0	6,531.0	21.6	130.6	90.00	372.0	596.0	743.3	591.1	152.22	4.883	
7,600.0	6,557.0	6,531.0	6,531.0	23.1	130.6	90.00	372.0	596.0	793.7	640.0	153.67	5.165	
7,700.0	6,557.0	6,531.0	6,531.0	24.6	130.6	90.00	372.0	596.0	852.9	697.7	155.18	5.496	
7,800.0	6,557.0	6,531.0	6,531.0	26.1	130.6	90.00	372.0	596.0	919.2	762.4	156.74	5.864	
7,900.0	6,557.0	6,531.0	6,531.0	27.7	130.6	90.00	372.0	596.0	991.2	832.8	158.35	6.259	

Company:	BONANZA CREEK ENERGY OPERATING	Local Co-ordinate Reference:	Well Park T-P-4HC
Project:	SEC.4-T4N-R63W	TVD Reference:	WELL @ 4628.0ft (RKB - 13')
Reference Site:	Park T-4 Pad Sec.4-T4N-R63W	MD Reference:	WELL @ 4628.0ft (RKB - 13')
Site Error:	0.0ft	North Reference:	True
Reference Well:	Park T-P-4HC	Survey Calculation Method:	Minimum Curvature
Well Error:	0.0ft	Output errors are at	2.00 sigma
Reference Wellbore	Wellbore #1	Database:	Landmark
Reference Design:	Plan #1 (10-30-13)	Offset TVD Reference:	Offset Datum

Offset Design												Offset Site Error:	0.0 ft
Survey Program: 167-MWD												Offset Well Error:	0.0 ft
Reference		Offset		Semi Major Axis			Distance						
Measured Depth (ft)	Vertical Depth (ft)	Measured Depth (ft)	Vertical Depth (ft)	Reference (ft)	Offset (ft)	Highside Toolface (°)	Offset Wellbore Centre +N/-S (ft)	+E/-W (ft)	Between Centres (ft)	Between Ellipses (ft)	Minimum Separation (ft)	Separation Factor	Warning
0.0	0.0	9.9	9.9	0.0	0.0	-150.00	-218.2	-126.0	252.0	252.0	0.01	N/A CC	
100.0	100.0	108.9	108.9	0.1	0.1	-150.01	-218.5	-126.1	252.2	252.0	0.23	1,073.423	
200.0	200.0	208.1	208.1	0.3	0.3	-150.05	-219.1	-126.2	252.8	252.2	0.62	410.209	
300.0	300.0	307.7	307.7	0.6	0.5	-150.08	-219.8	-126.5	253.7	252.6	1.06	238.796	
400.0	400.0	407.3	407.3	0.8	0.7	-150.08	-220.7	-127.0	254.6	253.1	1.51	168.841	
500.0	500.0	508.1	508.1	1.0	0.9	-150.07	-221.4	-127.5	255.5	253.6	1.94	131.904	
600.0	600.0	609.0	608.9	1.2	1.1	-150.04	-221.9	-127.9	256.1	253.7	2.37	108.233	
700.0	700.0	709.9	709.9	1.5	1.3	-149.99	-222.0	-128.2	256.3	253.5	2.79	91.819	
800.0	800.0	811.1	811.1	1.7	1.5	-149.98	-221.8	-128.2	256.1	252.9	3.22	79.596	
900.0	900.0	910.6	910.5	1.9	1.7	-149.91	-221.3	-128.2	255.8	252.1	3.65	70.086	
922.6	922.6	932.6	932.6	2.0	1.8	-149.91	-221.3	-128.2	255.7	252.0	3.75	68.259	
1,000.0	1,000.0	1,007.4	1,007.4	2.1	1.9	-149.89	-221.5	-128.5	256.1	252.1	4.08	62.776	
1,100.0	1,100.0	1,109.0	1,108.9	2.4	2.2	-150.17	-222.8	-127.7	256.8	252.3	4.52	56.832	
1,200.0	1,200.0	1,209.5	1,209.4	2.6	2.4	-151.08	-225.1	-124.4	257.2	252.3	4.95	51.924	
1,300.0	1,300.0	1,311.1	1,310.7	2.8	2.6	-152.68	-228.4	-118.0	257.1	251.7	5.40	47.622	
1,363.0	1,363.0	1,373.7	1,373.0	3.0	2.7	-154.11	-231.2	-112.2	257.0	251.3	5.68	45.215	
1,400.0	1,400.0	1,410.1	1,409.1	3.0	2.8	-155.03	-233.0	-108.5	257.0	251.2	5.85	43.915 ES	
1,500.0	1,500.0	1,510.6	1,509.0	3.3	3.1	-157.74	-238.3	-97.6	257.5	251.2	6.32	40.737	
1,600.0	1,600.0	1,609.1	1,606.7	3.5	3.3	-160.44	-243.4	-86.5	258.3	251.5	6.79	38.051	
1,700.0	1,700.0	1,708.2	1,705.0	3.7	3.6	-163.12	-248.7	-75.5	259.9	252.7	7.26	35.782	
1,800.0	1,800.0	1,807.8	1,803.8	3.9	3.8	-165.69	-254.0	-64.8	262.2	254.4	7.74	33.887	
1,900.0	1,900.0	1,908.4	1,903.8	4.2	4.1	-168.27	-258.9	-53.8	264.5	256.3	8.21	32.219	
2,000.0	2,000.0	2,009.0	2,003.6	4.4	4.4	-170.79	-263.4	-42.7	266.9	258.2	8.68	30.743	
2,100.0	2,100.0	2,110.9	2,104.8	4.6	4.6	-173.27	-267.2	-31.5	269.1	259.9	9.16	29.380	
2,200.0	2,200.0	2,207.0	2,200.3	4.8	4.9	-175.70	-270.8	-20.3	271.8	262.2	9.63	28.227	
2,300.0	2,300.0	2,306.6	2,299.2	5.1	5.2	-178.05	-275.1	-9.4	275.5	265.4	10.10	27.276	
2,400.0	2,400.0	2,403.2	2,395.1	5.3	5.5	179.77	-279.6	1.1	280.0	269.4	10.56	26.512	
2,500.0	2,500.0	2,500.0	2,491.1	5.5	5.7	177.70	-285.4	11.5	286.2	275.2	11.02	25.973	
2,600.0	2,600.0	2,598.6	2,589.0	5.7	6.0	175.67	-291.4	22.1	292.9	281.5	11.48	25.519	
2,700.0	2,700.0	2,697.1	2,686.4	5.9	6.3	-18.36	-297.5	35.1	298.9	286.8	12.05	24.799	
2,800.0	2,799.8	2,796.2	2,784.3	6.1	6.7	-21.19	-303.6	49.3	302.1	289.7	12.47	24.225	
2,900.0	2,899.5	2,892.5	2,879.4	6.3	7.0	-24.15	-309.7	63.2	303.2	290.4	12.87	23.565	
3,000.0	2,998.7	2,988.6	2,974.2	6.5	7.3	-27.28	-316.9	76.9	303.1	289.8	13.25	22.882	
3,100.0	3,097.6	3,091.4	3,075.9	6.7	7.6	-30.65	-324.5	90.1	301.0	287.4	13.64	22.062	
3,200.0	3,196.4	3,194.4	3,178.0	6.9	7.9	-33.86	-331.1	101.7	298.1	284.1	14.05	21.223	
3,300.0	3,295.3	3,294.9	3,277.8	7.1	8.2	-37.06	-336.5	112.6	295.1	280.6	14.45	20.426	
3,400.0	3,394.1	3,394.1	3,376.3	7.3	8.5	-40.34	-341.3	123.5	292.6	277.8	14.85	19.706	
3,491.8	3,484.8	3,481.4	3,462.9	7.6	8.8	-43.30	-345.7	133.4	291.6	276.4	15.22	19.158	
3,500.0	3,493.0	3,488.0	3,469.5	7.6	8.8	-43.53	-346.1	134.2	291.6	276.3	15.25	19.119	
3,600.0	3,591.8	3,582.9	3,563.5	7.8	9.1	-46.63	-352.5	145.2	293.1	277.4	15.67	18.710	
3,700.0	3,690.7	3,680.7	3,660.4	8.1	9.4	-49.61	-360.4	156.5	296.4	280.3	16.09	18.416	
3,800.0	3,789.5	3,778.5	3,757.2	8.4	9.7	-52.42	-368.7	167.5	300.7	284.2	16.53	18.186	
3,900.0	3,888.3	3,878.6	3,856.2	8.7	10.0	-55.12	-377.8	178.6	306.0	289.1	16.99	18.012	
4,000.0	3,987.2	3,981.6	3,958.3	8.9	10.3	-57.91	-385.9	189.6	310.9	293.4	17.46	17.801	
4,100.0	4,086.0	4,079.7	4,055.6	9.2	10.6	-60.44	-393.4	199.4	315.7	297.8	17.94	17.597	
4,200.0	4,184.9	4,176.0	4,151.1	9.5	10.9	-62.97	-400.6	210.0	321.8	303.4	18.43	17.460	
4,300.0	4,283.7	4,277.8	4,252.0	9.8	11.2	-65.85	-406.7	222.2	328.7	309.7	18.95	17.343	
4,400.0	4,382.6	4,381.0	4,354.4	10.1	11.5	-68.93	-410.7	234.1	334.7	315.2	19.49	17.175	
4,500.0	4,481.4	4,480.1	4,452.8	10.5	11.8	-71.62	-415.0	244.8	341.1	321.1	20.03	17.034	
4,600.0	4,580.3	4,582.0	4,554.0	10.8	12.1	-74.09	-420.3	254.6	347.7	327.1	20.58	16.893	
4,700.0	4,679.1	4,686.4	4,658.0	11.1	12.4	-76.43	-425.7	263.2	353.6	332.4	21.15	16.717	
4,800.0	4,778.0	4,794.9	4,766.1	11.4	12.7	-78.85	-429.9	270.2	357.8	336.1	21.73	16.465	

CC - Min centre to center distance or convergent point, SF - min separation factor, ES - min ellipse separation

Offset Design Park T-4 Pad Sec.4-T4N-R63W - Park 44-41-4HNB (Exist.) - Wellbore #1 - Wellbore #1													Offset Site Error: 0.0 ft	
Survey Program: 167-MWD													Offset Well Error: 0.0 ft	
Reference		Offset		Semi Major Axis			Distance							Warning
Measured Depth (ft)	Vertical Depth (ft)	Measured Depth (ft)	Vertical Depth (ft)	Reference (ft)	Offset (ft)	Highside Toolface (°)	Offset Wellbore Centre +N/-S (ft)	+E/-W (ft)	Between Centres (ft)	Between Ellipses (ft)	Minimum Separation (ft)	Separation Factor		
4,900.0	4,876.8	4,900.7	4,871.9	11.7	12.9	-81.27	-432.4	274.8	360.1	337.8	22.32	16.137		
5,000.0	4,975.7	5,008.2	4,979.3	12.1	13.1	-83.76	-433.9	277.9	361.4	338.5	22.91	15.777		
5,100.0	5,074.5	5,111.5	5,082.6	12.4	13.3	-86.08	-435.1	278.6	361.0	337.5	23.49	15.368		
5,185.6	5,159.2	5,196.3	5,167.4	12.7	13.4	-88.15	-435.0	279.0	360.8	336.8	23.99	15.043		
5,200.0	5,173.3	5,210.5	5,181.6	12.7	13.5	-88.50	-435.0	279.1	360.8	336.7	24.07	14.991		
5,300.0	5,272.2	5,309.3	5,280.3	13.1	13.6	-90.88	-435.1	279.6	361.2	336.6	24.65	14.656		
5,400.0	5,371.0	5,408.2	5,379.3	13.4	13.8	-93.20	-435.5	280.1	362.3	337.1	25.23	14.364		
5,500.0	5,469.9	5,506.5	5,477.6	13.7	14.0	-95.49	-435.9	280.5	364.0	338.1	25.80	14.105		
5,600.0	5,569.0	5,605.8	5,576.8	14.0	14.1	-97.55	-436.2	281.2	366.2	339.9	26.31	13.919		
5,700.0	5,668.5	5,706.2	5,677.2	14.3	14.3	-99.03	-436.7	281.6	368.1	341.3	26.79	13.740		
5,800.0	5,768.3	5,805.4	5,776.5	14.5	14.5	-99.94	-437.3	281.9	369.5	342.3	27.23	13.570		
5,900.0	5,868.3	5,899.0	5,869.6	14.7	14.6	-101.49	-430.2	283.1	371.2	343.6	27.60	13.448		
6,000.0	5,968.3	5,987.8	5,955.9	14.8	14.7	86.85	-409.3	286.6	375.8	347.9	27.92	13.458		
6,100.0	6,068.1	6,079.6	6,041.9	15.0	14.8	80.56	-377.9	289.8	382.6	354.4	28.14	13.596		
6,200.0	6,165.8	6,156.0	6,109.0	15.0	14.9	76.43	-341.5	293.2	391.7	363.6	28.15	13.917		
6,300.0	6,257.8	6,235.7	6,173.8	14.9	14.9	73.01	-295.5	298.5	402.6	374.7	27.92	14.419		
6,400.0	6,340.7	6,327.0	6,240.3	14.7	15.0	70.26	-233.3	303.8	411.5	384.0	27.54	14.945		
6,500.0	6,411.5	6,402.6	6,286.7	14.6	15.1	68.46	-173.9	307.7	418.7	391.5	27.16	15.415		
6,600.0	6,467.5	6,480.6	6,325.4	14.5	15.3	67.25	-106.3	311.0	423.4	396.4	26.98	15.692		
6,700.0	6,506.7	6,556.1	6,354.3	14.5	15.7	66.97	-36.7	315.7	427.2	400.0	27.24	15.682		
6,800.0	6,533.1	6,639.9	6,377.0	14.8	16.2	67.14	43.7	320.6	430.0	401.9	28.02	15.342		
6,900.0	6,553.5	6,725.6	6,387.0	15.2	16.8	65.93	128.7	322.7	433.3	404.3	29.04	14.922		
7,000.0	6,557.0	6,818.5	6,388.5	15.9	17.7	65.67	221.6	324.4	433.3	402.7	30.63	14.145		
7,100.0	6,557.0	6,935.9	6,387.8	16.8	18.9	65.40	339.0	324.1	431.1	398.5	32.59	13.226		
7,200.0	6,557.0	7,030.1	6,387.9	17.8	19.9	65.14	433.1	321.8	426.4	391.9	34.43	12.382		
7,300.0	6,557.0	7,126.5	6,387.6	19.0	21.0	64.88	529.5	320.6	422.9	386.3	36.56	11.566		
7,382.1	6,557.0	7,195.8	6,387.4	20.0	21.8	64.78	598.8	321.0	421.5	383.2	38.31	11.001		
7,400.0	6,557.0	7,211.7	6,387.2	20.2	22.0	64.75	614.7	321.4	421.5	382.8	38.71	10.890		
7,500.0	6,557.0	7,308.5	6,387.7	21.6	23.2	64.89	711.4	325.3	422.5	381.4	41.14	10.710		
7,600.0	6,557.0	7,409.3	6,389.0	23.1	24.6	65.18	812.1	330.3	424.0	380.2	43.83	9.673		
7,700.0	6,557.0	7,512.4	6,389.5	24.6	26.0	65.29	915.1	334.0	424.7	378.1	46.65	9.104		
7,800.0	6,557.0	7,611.5	6,392.1	26.1	27.4	65.73	1,014.1	338.9	425.7	376.1	49.52	8.596		
7,900.0	6,557.0	7,708.8	6,395.9	27.7	28.8	66.32	1,111.1	343.7	426.1	373.6	52.53	8.113		
8,000.0	6,557.0	7,802.0	6,397.0	29.4	30.3	66.59	1,204.2	348.6	428.0	372.5	55.54	7.707		
8,100.0	6,557.0	7,900.0	6,396.2	31.1	31.9	66.67	1,302.0	354.4	431.4	372.8	58.61	7.360		
8,200.0	6,557.0	8,001.1	6,395.7	32.8	33.5	66.76	1,403.0	360.1	434.3	372.6	61.69	7.039		
8,300.0	6,557.0	8,112.8	6,395.6	34.5	35.2	66.85	1,514.6	365.1	435.9	370.9	64.99	6.707		
8,389.3	6,557.0	8,203.5	6,397.5	36.0	36.6	67.10	1,605.2	367.9	435.5	367.7	67.86	6.418		
8,400.0	6,557.0	8,212.3	6,397.7	36.2	36.8	67.12	1,614.0	368.2	435.6	367.4	68.18	6.388		
8,500.0	6,557.0	8,298.1	6,397.5	38.0	38.2	67.21	1,699.7	372.6	437.8	366.6	71.20	6.149		
8,600.0	6,557.0	8,389.2	6,395.7	39.8	39.7	67.18	1,790.5	378.9	442.5	368.2	74.27	5.958		
8,700.0	6,557.0	8,494.6	6,393.9	41.5	41.4	67.20	1,895.7	386.3	447.2	369.6	77.54	5.767		
8,800.0	6,557.0	8,601.3	6,394.3	43.3	43.1	67.45	2,002.1	393.4	450.6	369.7	80.92	5.569		
8,900.0	6,557.0	8,697.9	6,396.1	45.1	44.7	67.86	2,098.4	400.1	454.0	369.7	84.32	5.384		
9,000.0	6,557.0	8,797.5	6,396.2	47.0	46.4	68.07	2,197.8	407.0	457.8	370.1	87.75	5.217		
9,100.0	6,557.0	8,889.4	6,394.9	48.8	48.0	68.12	2,289.4	413.7	462.6	371.6	90.98	5.085		
9,200.0	6,557.0	9,001.7	6,393.8	50.6	49.8	68.23	2,401.4	421.7	467.2	372.7	94.49	4.944		
9,300.0	6,557.0	9,096.2	6,394.2	52.4	51.4	68.44	2,495.7	427.9	470.6	372.8	97.79	4.812		
9,400.0	6,557.0	9,197.8	6,394.8	54.3	53.1	68.67	2,597.2	434.3	473.8	372.6	101.23	4.681		
9,500.0	6,557.0	9,295.0	6,394.3	56.1	54.7	68.78	2,694.1	440.7	477.6	373.0	104.60	4.566		
9,600.0	6,557.0	9,391.6	6,395.4	58.0	56.4	69.14	2,790.4	448.7	482.4	374.3	108.08	4.463		
9,700.0	6,557.0	9,486.9	6,395.9	59.8	58.0	69.44	2,885.3	457.3	488.1	376.5	111.57	4.375		

Company:	BONANZA CREEK ENERGY OPERATING	Local Co-ordinate Reference:	Well Park T-P-4HC
Project:	SEC.4-T4N-R63W	TVD Reference:	WELL @ 4628.0ft (RKB - 13')
Reference Site:	Park T-4 Pad Sec.4-T4N-R63W	MD Reference:	WELL @ 4628.0ft (RKB - 13')
Site Error:	0.0ft	North Reference:	True
Reference Well:	Park T-P-4HC	Survey Calculation Method:	Minimum Curvature
Well Error:	0.0ft	Output errors are at	2.00 sigma
Reference Wellbore	Wellbore #1	Database:	Landmark
Reference Design:	Plan #1 (10-30-13)	Offset TVD Reference:	Offset Datum

Offset Design Park T-4 Pad Sec.4-T4N-R63W - Park 44-41-4HNB (Exist.) - Wellbore #1 - Wellbore #1												Offset Site Error:	0.0 ft
Survey Program: 167-MWD												Offset Well Error:	0.0 ft
Reference		Offset		Semi Major Axis			Distance						
Measured Depth (ft)	Vertical Depth (ft)	Measured Depth (ft)	Vertical Depth (ft)	Reference (ft)	Offset (ft)	Highside Toolface (°)	Offset Wellbore Centre +N/-S (ft)	+E/-W (ft)	Between Centres (ft)	Between Ellipses (ft)	Minimum Separation (ft)	Separation Factor	Warning
9,800.0	6,557.0	9,591.2	6,395.5	61.7	59.8	69.61	2,989.3	465.2	492.9	377.8	115.08	4.283	
9,900.0	6,557.0	9,705.1	6,395.1	63.5	61.7	69.72	3,103.0	471.9	495.9	377.1	118.77	4.175	
10,000.0	6,557.0	9,806.4	6,394.5	65.4	63.5	69.72	3,204.1	476.4	497.8	375.5	122.21	4.073	
10,100.0	6,557.0	9,919.6	6,394.6	67.3	65.4	69.73	3,317.4	479.4	497.6	371.8	125.82	3.955	
10,129.2	6,557.0	9,945.0	6,394.7	67.8	65.8	69.74	3,342.7	480.0	497.5	370.7	126.76	3.925	
10,200.0	6,557.0	10,008.2	6,394.8	69.1	66.9	69.76	3,405.9	482.2	498.0	368.9	129.08	3.858	
10,300.0	6,557.0	10,095.8	6,393.9	71.0	68.5	69.78	3,493.4	487.3	501.2	368.9	132.32	3.788	
10,400.0	6,557.0	10,195.2	6,391.6	72.9	70.2	69.65	3,592.5	492.9	504.9	369.2	135.66	3.722	
10,500.0	6,557.0	10,297.1	6,390.6	74.8	71.9	69.73	3,694.2	500.2	509.4	370.2	139.14	3.661	
10,600.0	6,557.0	10,400.9	6,392.9	76.6	73.7	70.16	3,797.7	508.0	513.2	370.3	142.89	3.592	
10,700.0	6,557.0	10,501.0	6,395.5	78.5	75.4	70.56	3,897.6	514.1	515.5	368.9	146.61	3.517	
10,800.0	6,557.0	10,597.4	6,397.2	80.4	77.1	70.86	3,993.7	520.0	518.2	368.0	150.22	3.450	
10,900.0	6,557.0	10,710.8	6,397.8	82.3	79.1	71.03	4,107.0	525.9	520.4	366.4	154.01	3.379	
11,000.0	6,557.0	10,824.0	6,398.2	84.1	81.0	71.10	4,220.1	529.8	521.1	363.4	157.74	3.304	
11,100.0	6,557.0	10,926.5	6,397.9	86.0	82.8	71.01	4,322.6	530.7	519.5	358.3	161.20	3.223	
11,200.0	6,557.0	11,024.3	6,396.7	87.9	84.5	70.81	4,420.4	531.4	518.0	353.5	164.49	3.149	
11,280.9	6,557.0	11,114.0	6,395.2	89.1	86.1	70.52	4,510.1	530.5	515.7	348.7	166.95	3.089 SF	

Company:	BONANZA CREEK ENERGY OPERATING	Local Co-ordinate Reference:	Well Park T-P-4HC
Project:	SEC.4-T4N-R63W	TVD Reference:	WELL @ 4628.0ft (RKB - 13')
Reference Site:	Park T-4 Pad Sec.4-T4N-R63W	MD Reference:	WELL @ 4628.0ft (RKB - 13')
Site Error:	0.0ft	North Reference:	True
Reference Well:	Park T-P-4HC	Survey Calculation Method:	Minimum Curvature
Well Error:	0.0ft	Output errors are at	2.00 sigma
Reference Wellbore	Wellbore #1	Database:	Landmark
Reference Design:	Plan #1 (10-30-13)	Offset TVD Reference:	Offset Datum

Offset Design													Offset Site Error:	0.0 ft
Survey Program: 0-MWD													Offset Well Error:	0.0 ft
Reference		Offset		Semi Major Axis			Distance							Warning
Measured Depth (ft)	Vertical Depth (ft)	Measured Depth (ft)	Vertical Depth (ft)	Reference (ft)	Offset (ft)	Highside Toolface (°)	Offset Wellbore Centre +N/-S (ft)	+E/-W (ft)	Between Centres (ft)	Between Ellipses (ft)	Minimum Separation (ft)	Separation Factor		
0.0	0.0	0.0	0.0	0.0	0.0	-89.99	0.0	-20.1	20.1					
100.0	100.0	100.0	100.0	0.1	0.1	-89.99	0.0	-20.1	20.1	19.8	0.22	89.306		
200.0	200.0	200.0	200.0	0.3	0.3	-89.99	0.0	-20.1	20.1	19.4	0.67	29.769		
300.0	300.0	300.0	300.0	0.6	0.6	-89.99	0.0	-20.1	20.1	18.9	1.12	17.861		
400.0	400.0	400.0	400.0	0.8	0.8	-89.99	0.0	-20.1	20.1	18.5	1.57	12.758		
500.0	500.0	500.0	500.0	1.0	1.0	-89.99	0.0	-20.1	20.1	18.0	2.02	9.923		
600.0	600.0	600.0	600.0	1.2	1.2	-89.99	0.0	-20.1	20.1	17.6	2.47	8.119		
700.0	700.0	700.0	700.0	1.5	1.5	-89.99	0.0	-20.1	20.1	17.2	2.92	6.870		
800.0	800.0	800.0	800.0	1.7	1.7	-89.99	0.0	-20.1	20.1	16.7	3.37	5.954		
900.0	900.0	900.0	900.0	1.9	1.9	-89.99	0.0	-20.1	20.1	16.3	3.82	5.253		
1,000.0	1,000.0	1,000.0	1,000.0	2.1	2.1	-89.99	0.0	-20.1	20.1	15.8	4.27	4.700		
1,100.0	1,100.0	1,100.0	1,100.0	2.4	2.4	-89.99	0.0	-20.1	20.1	15.4	4.72	4.253		
1,200.0	1,200.0	1,200.0	1,200.0	2.6	2.6	-89.99	0.0	-20.1	20.1	14.9	5.17	3.883		
1,300.0	1,300.0	1,300.0	1,300.0	2.8	2.8	-89.99	0.0	-20.1	20.1	14.5	5.62	3.572		
1,400.0	1,400.0	1,400.0	1,400.0	3.0	3.0	-89.99	0.0	-20.1	20.1	14.0	6.07	3.308		
1,500.0	1,500.0	1,500.0	1,500.0	3.3	3.3	-89.99	0.0	-20.1	20.1	13.6	6.52	3.080		
1,600.0	1,600.0	1,600.0	1,600.0	3.5	3.5	-89.99	0.0	-20.1	20.1	13.1	6.97	2.881 CC, ES, SF		
1,700.0	1,700.0	1,699.3	1,699.3	3.7	3.7	-91.39	-0.5	-21.7	21.7	14.3	7.40	2.937		
1,800.0	1,800.0	1,798.4	1,798.2	3.9	3.9	-94.55	-2.1	-26.6	26.7	18.9	7.81	3.423		
1,900.0	1,900.0	1,896.9	1,896.4	4.2	4.1	-97.79	-4.7	-34.7	35.2	27.0	8.23	4.276		
2,000.0	2,000.0	1,994.8	1,993.6	4.4	4.3	-100.35	-8.4	-45.9	47.1	38.5	8.65	5.443		
2,100.0	2,100.0	2,091.8	2,089.4	4.6	4.5	-102.20	-13.0	-60.1	62.4	53.3	9.08	6.874		
2,200.0	2,200.0	2,187.6	2,183.5	4.8	4.8	-103.51	-18.5	-77.2	81.1	71.6	9.51	8.525		
2,300.0	2,300.0	2,282.2	2,275.7	5.1	5.1	-104.44	-25.0	-97.0	103.0	93.1	9.94	10.360		
2,400.0	2,400.0	2,375.2	2,365.8	5.3	5.5	-105.11	-32.2	-119.2	128.1	117.8	10.38	12.345		
2,500.0	2,500.0	2,466.6	2,453.4	5.5	5.8	-105.61	-40.2	-143.8	156.4	145.6	10.82	14.452		
2,600.0	2,600.0	2,556.2	2,538.6	5.7	6.3	-105.99	-48.8	-170.4	187.6	176.4	11.26	16.658		
2,700.0	2,700.0	2,644.2	2,621.2	5.9	6.7	61.92	-58.1	-199.1	221.1	209.4	11.65	18.978		
2,800.0	2,799.8	2,730.7	2,701.6	6.1	7.3	62.00	-68.0	-229.6	255.8	243.8	12.03	21.262		
2,900.0	2,899.5	2,815.7	2,779.5	6.3	7.8	62.44	-78.5	-261.7	291.9	279.5	12.43	23.496		
3,000.0	2,998.7	2,904.2	2,859.8	6.5	8.5	63.18	-90.0	-297.2	329.0	316.2	12.85	25.616		
3,100.0	3,097.6	2,996.8	2,943.7	6.7	9.2	64.55	-102.1	-334.6	365.5	352.2	13.30	27.479		
3,200.0	3,196.4	3,089.5	3,027.7	6.9	10.0	65.91	-114.3	-372.0	402.0	388.2	13.78	29.166		
3,300.0	3,295.3	3,182.2	3,111.6	7.1	10.7	67.04	-126.4	-409.3	438.8	424.5	14.29	30.698		
3,400.0	3,394.1	3,274.9	3,195.5	7.3	11.5	68.00	-138.6	-446.7	475.6	460.8	14.82	32.085		
3,500.0	3,493.0	3,367.6	3,279.5	7.6	12.3	68.82	-150.7	-484.1	512.6	497.2	15.37	33.339		
3,600.0	3,591.8	3,460.3	3,363.4	7.8	13.1	69.53	-162.8	-521.5	549.6	533.6	15.94	34.470		
3,700.0	3,690.7	3,553.0	3,447.4	8.1	13.9	70.16	-175.0	-558.9	586.7	570.2	16.53	35.491		
3,800.0	3,789.5	3,645.7	3,531.3	8.4	14.7	70.70	-187.1	-596.2	623.8	606.7	17.13	36.413		
3,900.0	3,888.3	3,738.4	3,615.3	8.7	15.5	71.19	-199.3	-633.6	661.0	643.3	17.75	37.246		
4,000.0	3,987.2	3,831.0	3,699.2	8.9	16.3	71.62	-211.4	-671.0	698.3	679.9	18.38	38.000		
4,100.0	4,086.0	3,923.7	3,783.1	9.2	17.1	72.02	-223.5	-708.4	735.5	716.5	19.01	38.682		
4,200.0	4,184.9	4,016.4	3,867.1	9.5	17.9	72.37	-235.7	-745.8	772.8	753.1	19.66	39.301		
4,300.0	4,283.7	4,109.1	3,951.0	9.8	18.7	72.69	-247.8	-783.1	810.1	789.8	20.32	39.863		
4,400.0	4,382.6	4,201.8	4,035.0	10.1	19.6	72.98	-260.0	-820.5	847.4	826.4	20.99	40.375		
4,500.0	4,481.4	4,294.5	4,118.9	10.5	20.4	73.25	-272.1	-857.9	884.8	863.1	21.66	40.841		
4,600.0	4,580.3	4,387.2	4,202.9	10.8	21.2	73.50	-284.2	-895.3	922.1	899.8	22.35	41.266		
4,700.0	4,679.1	4,479.9	4,286.8	11.1	22.1	73.72	-296.4	-932.7	959.5	936.5	23.03	41.656		
4,800.0	4,778.0	4,572.6	4,370.7	11.4	22.9	73.93	-308.5	-970.0	996.9	973.2	23.73	42.013		

Company:	BONANZA CREEK ENERGY OPERATING	Local Co-ordinate Reference:	Well Park T-P-4HC
Project:	SEC.4-T4N-R63W	TVD Reference:	WELL @ 4628.0ft (RKB - 13')
Reference Site:	Park T-4 Pad Sec.4-T4N-R63W	MD Reference:	WELL @ 4628.0ft (RKB - 13')
Site Error:	0.0ft	North Reference:	True
Reference Well:	Park T-P-4HC	Survey Calculation Method:	Minimum Curvature
Well Error:	0.0ft	Output errors are at	2.00 sigma
Reference Wellbore	Wellbore #1	Database:	Landmark
Reference Design:	Plan #1 (10-30-13)	Offset TVD Reference:	Offset Datum

Offset Design													Offset Site Error:	0.0 ft
Survey Program: 783-MWD													Offset Well Error:	0.0 ft
Reference		Offset		Semi Major Axis			Distance							Warning
Measured Depth (ft)	Vertical Depth (ft)	Measured Depth (ft)	Vertical Depth (ft)	Reference (ft)	Offset (ft)	Highside Toolface (°)	Offset Wellbore Centre +N/-S (ft)	+E/-W (ft)	Between Centres (ft)	Between Ellipses (ft)	Minimum Separation (ft)	Separation Factor		
0.0	0.0	0.0	0.0	0.0	0.0	0.83	729.0	10.6	729.3					
100.0	100.0	83.0	83.0	0.1	0.1	0.83	729.0	10.6	729.1	728.8	0.21	3,541.367		
200.0	200.0	183.0	183.0	0.3	0.2	0.84	729.0	10.7	729.0	728.5	0.54	1,342.569		
300.0	300.0	283.1	283.1	0.6	0.3	0.85	729.0	10.8	729.0	728.2	0.88	828.284		
400.0	400.0	383.1	383.1	0.8	0.4	0.86	728.9	10.9	729.0	727.8	1.22	598.872		
500.0	500.0	483.1	483.1	1.0	0.5	0.87	728.9	11.1	729.0	727.5	1.55	468.972		
600.0	600.0	583.1	583.1	1.2	0.7	0.89	728.9	11.3	729.0	727.1	1.89	385.376		
700.0	700.0	683.2	683.2	1.5	0.8	0.91	728.9	11.6	729.0	726.7	2.23	327.070		
799.8	799.8	783.0	783.0	1.7	0.9	0.94	728.9	12.0	729.0	726.4	2.57	284.168		
800.0	800.0	783.0	783.0	1.7	0.9	0.94	728.9	12.0	729.0	726.4	2.57	284.109		
900.0	900.0	860.3	860.3	1.9	1.0	0.95	730.0	12.1	730.5	727.5	2.95	247.377		
1,000.0	1,000.0	934.2	934.1	2.1	1.2	0.92	733.6	11.8	735.3	732.0	3.33	220.595		
1,100.0	1,100.0	1,008.1	1,007.7	2.4	1.4	0.84	739.9	10.8	743.8	740.0	3.72	200.010		
1,200.0	1,200.0	1,083.8	1,082.9	2.6	1.5	0.73	748.8	9.5	755.5	751.4	4.12	183.580		
1,300.0	1,300.0	1,161.0	1,159.3	2.8	1.8	0.69	760.0	9.1	770.0	765.5	4.52	170.315		
1,400.0	1,400.0	1,239.9	1,237.0	3.0	2.0	0.78	773.4	10.5	787.2	782.2	4.94	159.360		
1,500.0	1,500.0	1,307.3	1,303.0	3.3	2.2	0.93	787.1	12.8	807.5	802.1	5.34	151.242		
1,600.0	1,600.0	1,374.3	1,367.9	3.5	2.5	1.02	803.2	14.3	831.7	825.9	5.74	144.835		
1,700.0	1,700.0	1,443.0	1,434.0	3.7	2.8	1.01	822.0	14.4	859.0	852.8	6.15	139.602		
1,800.0	1,800.0	1,509.7	1,497.5	3.9	3.2	0.93	842.3	13.6	889.5	882.9	6.57	135.478		
1,900.0	1,900.0	1,571.3	1,555.5	4.2	3.5	0.83	863.1	12.4	923.2	916.2	6.97	132.425		
2,000.0	2,000.0	1,632.0	1,611.8	4.4	3.9	0.67	885.7	10.3	960.4	953.0	7.38	130.165		
8,100.0	6,557.0	6,797.0	6,519.7	31.1	30.7	-81.85	2,295.9	-157.1	976.3	915.2	61.14	15.969		
8,200.0	6,557.0	6,797.0	6,519.7	32.8	30.7	-81.85	2,295.9	-157.1	877.5	814.7	62.82	13.968		
8,300.0	6,557.0	6,797.0	6,519.7	34.5	30.7	-81.85	2,295.9	-157.1	779.1	714.5	64.53	12.073		
8,400.0	6,557.0	6,797.0	6,519.7	36.2	30.7	-81.85	2,295.9	-157.1	681.0	614.8	66.26	10.278		
8,500.0	6,557.0	6,797.0	6,519.7	38.0	30.7	-81.85	2,295.9	-157.1	583.7	515.7	68.00	8.583		
8,600.0	6,557.0	6,797.0	6,519.7	39.8	30.7	-81.85	2,295.9	-157.1	487.4	417.6	69.76	6.986		
8,700.0	6,557.0	6,797.0	6,519.7	41.5	30.7	-81.85	2,295.9	-157.1	392.9	321.4	71.53	5.493		
8,800.0	6,557.0	6,797.0	6,519.7	43.3	30.7	-81.85	2,295.9	-157.1	302.0	228.7	73.31	4.120		
8,900.0	6,557.0	6,797.0	6,519.7	45.1	30.7	-81.85	2,295.9	-157.1	219.3	144.2	75.10	2.920		
9,000.0	6,557.0	6,797.0	6,519.7	47.0	30.7	-81.85	2,295.9	-157.1	157.9	81.0	76.89	2.054		
9,065.7	6,557.0	6,797.0	6,519.7	48.2	30.7	-81.85	2,295.9	-157.1	143.6	65.5	78.08	1.839 CC, ES, SF		
9,100.0	6,557.0	6,797.0	6,519.7	48.8	30.7	-81.85	2,295.9	-157.1	147.6	68.9	78.70	1.876		
9,200.0	6,557.0	6,797.0	6,519.7	50.6	30.7	-81.85	2,295.9	-157.1	196.6	116.1	80.51	2.442		
9,300.0	6,557.0	6,797.0	6,519.7	52.4	30.7	-81.85	2,295.9	-157.1	274.8	192.5	82.33	3.338		
9,400.0	6,557.0	6,797.0	6,519.7	54.3	30.7	-81.85	2,295.9	-157.1	363.8	279.7	84.15	4.324		
9,500.0	6,557.0	6,797.0	6,519.7	56.1	30.7	-81.85	2,295.9	-157.1	457.4	371.4	85.98	5.320		
9,600.0	6,557.0	6,797.0	6,519.7	58.0	30.7	-81.85	2,295.9	-157.1	553.2	465.4	87.81	6.300		
9,700.0	6,557.0	6,797.0	6,519.7	59.8	30.7	-81.85	2,295.9	-157.1	650.3	560.7	89.65	7.254		
9,800.0	6,557.0	6,797.0	6,519.7	61.7	30.7	-81.85	2,295.9	-157.1	748.2	656.7	91.49	8.178		
9,900.0	6,557.0	6,797.0	6,519.7	63.5	30.7	-81.85	2,295.9	-157.1	846.6	753.2	93.33	9.070		
10,000.0	6,557.0	6,797.0	6,519.7	65.4	30.7	-81.85	2,295.9	-157.1	945.3	850.1	95.18	9.932		

Company:	BONANZA CREEK ENERGY OPERATING	Local Co-ordinate Reference:	Well Park T-P-4HC
Project:	SEC.4-T4N-R63W	TVD Reference:	WELL @ 4628.0ft (RKB - 13')
Reference Site:	Park T-4 Pad Sec.4-T4N-R63W	MD Reference:	WELL @ 4628.0ft (RKB - 13')
Site Error:	0.0ft	North Reference:	True
Reference Well:	Park T-P-4HC	Survey Calculation Method:	Minimum Curvature
Well Error:	0.0ft	Output errors are at	2.00 sigma
Reference Wellbore	Wellbore #1	Database:	Landmark
Reference Design:	Plan #1 (10-30-13)	Offset TVD Reference:	Offset Datum

Offset Design													Offset Site Error:	0.0 ft
Survey Program: 783-MWD													Offset Well Error:	0.0 ft
Reference		Offset		Semi Major Axis			Distance							Warning
Measured Depth (ft)	Vertical Depth (ft)	Measured Depth (ft)	Vertical Depth (ft)	Reference (ft)	Offset (ft)	Highside Toolface (°)	Offset Wellbore Centre +N/-S (ft)	+E/-W (ft)	Between Centres (ft)	Between Ellipses (ft)	Minimum Separation (ft)	Separation Factor		
0.0	0.0	0.0	0.0	0.0	0.0	-0.26	729.0	-3.3	729.2					
100.0	100.0	82.7	82.7	0.1	0.1	-0.26	729.0	-3.3	729.0	728.8	0.21	3,546.526		
200.0	200.0	182.4	182.4	0.3	0.2	-0.26	729.1	-3.4	729.1	728.5	0.54	1,344.304		
300.0	300.0	282.1	282.1	0.6	0.3	-0.27	729.2	-3.4	729.2	728.3	0.88	829.429		
400.0	400.0	381.8	381.8	0.8	0.4	-0.27	729.3	-3.4	729.3	728.1	1.22	599.810		
500.0	500.0	481.5	481.5	1.0	0.5	-0.27	729.5	-3.5	729.5	727.9	1.55	469.830		
600.0	600.0	581.2	581.2	1.2	0.7	-0.28	729.7	-3.5	729.7	727.8	1.89	386.208		
700.0	700.0	680.9	680.9	1.5	0.8	-0.28	730.0	-3.6	730.0	727.8	2.23	327.906		
800.0	800.0	780.5	780.5	1.7	0.9	-0.29	730.3	-3.7	730.3	727.7	2.56	284.942		
900.0	900.0	874.3	874.3	1.9	1.1	-0.43	730.8	-5.5	730.9	727.9	2.99	244.421		
1,000.0	1,000.0	961.2	960.9	2.1	1.3	-0.94	732.7	-12.0	733.1	729.7	3.41	214.685		
1,100.0	1,100.0	1,057.8	1,056.8	2.4	1.5	-1.79	735.7	-23.0	736.5	732.6	3.89	189.488		
1,200.0	1,200.0	1,164.3	1,162.3	2.6	1.8	-2.89	738.5	-37.3	739.8	735.4	4.40	168.130		
1,300.0	1,300.0	1,271.8	1,268.6	2.8	2.1	-4.15	739.9	-53.6	742.0	737.0	4.92	150.714		
1,400.0	1,400.0	1,372.9	1,368.5	3.0	2.4	-5.28	740.6	-68.4	743.9	738.5	5.41	137.379		
1,500.0	1,500.0	1,483.4	1,477.8	3.3	2.8	-6.53	740.6	-84.7	745.5	739.5	5.95	125.217		
1,600.0	1,600.0	1,588.9	1,582.0	3.5	3.1	-7.83	738.8	-101.6	745.7	739.2	6.51	114.620		
1,700.0	1,700.0	1,690.8	1,682.6	3.7	3.4	-9.08	736.5	-117.7	745.8	738.8	7.06	105.696		
1,800.0	1,800.0	1,790.4	1,781.0	3.9	3.8	-10.29	734.0	-133.3	746.0	738.4	7.60	98.176		
1,900.0	1,900.0	1,868.9	1,858.5	4.2	4.0	-11.20	733.1	-145.1	747.7	739.7	8.06	92.801		
2,000.0	2,000.0	1,969.2	1,957.8	4.4	4.3	-12.28	733.8	-159.7	751.4	742.8	8.58	87.602		
2,100.0	2,100.0	2,068.1	2,055.7	4.6	4.6	-13.27	734.2	-173.2	754.8	745.7	9.08	83.092		
2,200.0	2,200.0	2,170.2	2,157.0	4.8	5.0	-14.21	734.7	-186.1	758.3	748.7	9.59	79.080		
2,300.0	2,300.0	2,272.2	2,258.3	5.1	5.3	-15.07	735.1	-197.9	761.6	751.6	10.09	75.508		
2,400.0	2,400.0	2,368.7	2,354.2	5.3	5.5	-15.81	735.7	-208.4	765.2	754.6	10.56	72.459		
2,500.0	2,500.0	2,468.6	2,453.6	5.5	5.8	-16.50	736.7	-218.2	768.9	757.9	11.03	69.696		
2,600.0	2,600.0	2,569.3	2,553.9	5.7	6.1	-17.13	738.2	-227.6	773.0	761.5	11.50	67.235		
2,700.0	2,700.0	2,685.5	2,669.7	5.9	6.4	-18.07	738.2	-236.5	776.8	764.6	12.14	63.981		
2,800.0	2,799.8	2,783.7	2,767.7	6.1	6.6	-18.32	737.8	-243.5	783.1	770.6	12.52	62.547		
2,900.0	2,899.5	2,892.7	2,876.5	6.3	6.8	-18.57	737.3	-250.6	792.4	779.5	12.91	61.366		
3,000.0	2,998.7	2,994.4	2,978.1	6.5	7.1	-18.81	736.4	-254.6	803.3	790.0	13.27	60.552		
3,100.0	3,097.6	3,095.3	3,078.9	6.7	7.3	-19.05	735.7	-258.1	816.7	803.0	13.64	59.863		
3,200.0	3,196.4	3,196.9	3,180.4	6.9	7.5	-19.29	734.8	-261.0	829.9	815.9	14.04	59.108		
3,300.0	3,295.3	3,299.8	3,283.3	7.1	7.7	-19.53	733.6	-263.6	842.8	828.4	14.45	58.348		
3,400.0	3,394.1	3,416.4	3,399.9	7.3	7.9	-19.77	730.9	-264.5	854.1	839.3	14.87	57.453		
3,500.0	3,493.0	3,499.5	3,483.0	7.6	8.0	-19.99	729.7	-263.6	865.8	850.6	15.22	56.893		
3,600.0	3,591.8	3,597.4	3,580.9	7.8	8.2	-19.23	729.4	-262.3	878.5	862.9	15.60	56.333		
3,700.0	3,690.7	3,698.8	3,682.2	8.1	8.3	-19.01	729.0	-260.4	891.1	875.2	15.98	55.772		
3,800.0	3,789.5	3,795.3	3,778.7	8.4	8.5	-18.77	728.8	-258.1	903.9	887.6	16.35	55.276		
3,900.0	3,888.3	3,896.4	3,879.8	8.7	8.6	-18.53	728.5	-255.8	916.7	900.0	16.74	54.774		
4,000.0	3,987.2	3,993.9	3,977.2	8.9	8.8	-18.29	728.2	-254.0	929.6	912.5	17.12	54.310		
4,100.0	4,086.0	4,095.6	4,079.0	9.2	8.9	-18.05	727.7	-252.0	942.4	924.9	17.51	53.818		
4,200.0	4,184.9	4,195.5	4,178.8	9.5	9.1	-17.81	726.9	-250.4	955.1	937.2	17.91	53.337		
4,300.0	4,283.7	4,292.9	4,276.2	9.8	9.3	-17.57	726.1	-248.9	967.9	949.6	18.31	52.874		
4,400.0	4,382.6	4,388.0	4,371.3	10.1	9.4	-17.33	725.5	-247.9	981.0	962.3	18.70	52.448		
4,500.0	4,481.4	4,483.4	4,466.8	10.5	9.6	-17.09	725.3	-247.4	994.5	975.4	19.11	52.050		
6,500.0	6,411.5	6,414.3	6,397.5	14.6	13.4	-17.79	730.4	-254.0	986.6	966.0	20.63	47.816		
6,600.0	6,467.5	6,468.8	6,452.0	14.5	13.5	-25.04	730.2	-254.2	905.6	885.9	19.73	45.905		
6,700.0	6,506.7	6,507.0	6,490.2	14.5	13.6	-39.51	730.2	-254.3	816.2	794.7	21.45	38.060		
6,800.0	6,533.1	6,533.1	6,516.3	14.8	13.6	-47.66	730.1	-254.3	723.0	699.7	23.27	31.066		
6,900.0	6,553.5	6,553.5	6,536.7	15.2	13.6	-70.81	730.1	-254.4	629.5	602.2	27.31	23.048		
7,000.0	6,557.0	6,556.9	6,540.1	15.9	13.7	-90.02	730.1	-254.4	535.6	506.7	28.90	18.531		

CC - Min centre to center distance or convergent point, SF - min separation factor, ES - min ellipse separation

Company:	BONANZA CREEK ENERGY OPERATING	Local Co-ordinate Reference:	Well Park T-P-4HC
Project:	SEC.4-T4N-R63W	TVD Reference:	WELL @ 4628.0ft (RKB - 13')
Reference Site:	Park T-4 Pad Sec.4-T4N-R63W	MD Reference:	WELL @ 4628.0ft (RKB - 13')
Site Error:	0.0ft	North Reference:	True
Reference Well:	Park T-P-4HC	Survey Calculation Method:	Minimum Curvature
Well Error:	0.0ft	Output errors are at	2.00 sigma
Reference Wellbore	Wellbore #1	Database:	Landmark
Reference Design:	Plan #1 (10-30-13)	Offset TVD Reference:	Offset Datum

Offset Design PARK T-P-4HZ PAD SEC.4-T4N-R63W - Park S-4 (Exist.) - Wellbore #1 - Wellbore #1												Offset Site Error:	0.0 ft
Survey Program: 783-MWD												Offset Well Error:	0.0 ft
Reference		Offset		Semi Major Axis			Distance						
Measured Depth (ft)	Vertical Depth (ft)	Measured Depth (ft)	Vertical Depth (ft)	Reference (ft)	Offset (ft)	Highside Toolface (°)	Offset Wellbore Centre +N/-S (ft)	+E/-W (ft)	Between Centres (ft)	Between Ellipses (ft)	Minimum Separation (ft)	Separation Factor	Warning
7,100.0	6,557.0	6,556.8	6,539.9	16.8	13.7	-89.98	730.1	-254.4	444.1	414.4	29.76	14.923	
7,200.0	6,557.0	6,556.6	6,539.8	17.8	13.7	-89.95	730.1	-254.4	357.3	326.5	30.79	11.607	
7,300.0	6,557.0	6,556.5	6,539.7	19.0	13.7	-89.91	730.1	-254.4	279.5	247.5	31.95	8.748	
7,400.0	6,557.0	6,556.4	6,539.6	20.2	13.7	-89.87	730.1	-254.4	220.3	187.1	33.23	6.631	
7,497.8	6,557.0	6,556.3	6,539.4	21.6	13.7	-89.84	730.1	-254.4	197.4	162.8	34.57	5.710 CC	
7,500.0	6,557.0	6,556.2	6,539.4	21.6	13.7	-89.84	730.1	-254.4	197.4	162.8	34.60	5.706 ES, SF	
7,600.0	6,557.0	6,556.1	6,539.3	23.1	13.7	-89.80	730.1	-254.4	222.2	186.2	36.04	6.166	
7,700.0	6,557.0	6,556.0	6,539.2	24.6	13.7	-89.76	730.1	-254.4	282.5	245.0	37.56	7.523	
7,800.0	6,557.0	6,555.9	6,539.1	26.1	13.7	-89.73	730.1	-254.4	360.9	321.8	39.12	9.225	
7,900.0	6,557.0	6,555.7	6,538.9	27.7	13.7	-89.69	730.1	-254.4	448.0	407.2	40.73	10.999	
8,000.0	6,557.0	6,555.6	6,538.8	29.4	13.7	-89.66	730.1	-254.4	539.5	497.2	42.37	12.733	
8,100.0	6,557.0	6,555.5	6,538.7	31.1	13.6	-89.62	730.1	-254.4	633.7	589.6	44.05	14.386	
8,200.0	6,557.0	6,555.4	6,538.6	32.8	13.6	-89.58	730.1	-254.4	729.4	683.6	45.75	15.943	
8,300.0	6,557.0	6,555.3	6,538.4	34.5	13.6	-89.55	730.1	-254.4	826.1	778.6	47.47	17.401	
8,400.0	6,557.0	6,555.1	6,538.3	36.2	13.6	-89.51	730.1	-254.4	923.5	874.3	49.21	18.765	

Company:	BONANZA CREEK ENERGY OPERATING	Local Co-ordinate Reference:	Well Park T-P-4HC
Project:	SEC.4-T4N-R63W	TVD Reference:	WELL @ 4628.0ft (RKB - 13')
Reference Site:	Park T-4 Pad Sec.4-T4N-R63W	MD Reference:	WELL @ 4628.0ft (RKB - 13')
Site Error:	0.0ft	North Reference:	True
Reference Well:	Park T-P-4HC	Survey Calculation Method:	Minimum Curvature
Well Error:	0.0ft	Output errors are at	2.00 sigma
Reference Wellbore	Wellbore #1	Database:	Landmark
Reference Design:	Plan #1 (10-30-13)	Offset TVD Reference:	Offset Datum

Offset Design												Offset Site Error:	0.0 ft
Survey Program: 760-MWD												Offset Well Error:	0.0 ft
Reference		Offset		Semi Major Axis			Distance						
Measured Depth (ft)	Vertical Depth (ft)	Measured Depth (ft)	Vertical Depth (ft)	Reference (ft)	Offset (ft)	Highside Toolface (°)	Offset Wellbore Centre +N/-S (ft)	+E/-W (ft)	Between Centres (ft)	Between Ellipses (ft)	Minimum Separation (ft)	Separation Factor	Warning
0.0	0.0	12.0	12.0	0.0	0.0	-145.30	-218.2	-151.1	265.4	265.4	0.01	N/A	
100.0	100.0	112.0	112.0	0.1	0.1	-145.29	-218.2	-151.2	265.4	265.2	0.24	1,112.713	
200.0	200.0	212.0	212.0	0.3	0.2	-145.26	-218.1	-151.3	265.4	264.9	0.58	461.017	
300.0	300.0	311.9	311.9	0.6	0.4	-145.20	-218.0	-151.5	265.5	264.5	0.91	290.754	
400.0	400.0	411.9	411.9	0.8	0.5	-145.13	-217.8	-151.8	265.5	264.2	1.25	212.347	
500.0	500.0	511.9	511.9	1.0	0.6	-145.04	-217.6	-152.1	265.5	263.9	1.59	167.257	
600.0	600.0	611.9	611.9	1.2	0.7	-144.93	-217.3	-152.6	265.6	263.6	1.92	137.972	
700.0	700.0	711.9	711.9	1.5	0.8	-144.80	-217.0	-153.1	265.6	263.3	2.26	117.423	
800.0	800.0	811.6	811.6	1.7	1.0	-144.65	-216.7	-153.7	265.7	263.0	2.65	100.198	
900.0	900.0	911.1	911.1	1.9	1.2	-144.50	-216.5	-154.4	265.9	262.8	3.09	86.063	
1,000.0	1,000.0	1,010.7	1,010.6	2.1	1.4	-144.35	-216.4	-155.2	266.3	262.8	3.53	75.493	
1,100.0	1,100.0	1,110.8	1,110.8	2.4	1.6	-144.21	-216.4	-156.0	266.8	262.9	3.95	67.552	
1,200.0	1,200.0	1,211.0	1,211.0	2.6	1.8	-144.11	-216.5	-156.7	267.2	262.8	4.37	61.129	
1,300.0	1,300.0	1,312.2	1,312.2	2.8	2.0	-144.07	-216.5	-156.9	267.4	262.6	4.79	55.807	
1,400.0	1,400.0	1,413.2	1,413.1	3.0	2.2	-144.15	-216.5	-156.4	267.1	261.9	5.22	51.211	
1,500.0	1,500.0	1,513.7	1,513.7	3.3	2.4	-144.27	-216.4	-155.7	266.6	260.9	5.64	47.228	
1,600.0	1,600.0	1,614.0	1,614.0	3.5	2.6	-144.40	-216.1	-154.7	265.8	259.8	6.07	43.768	
1,700.0	1,700.0	1,713.0	1,712.9	3.7	2.8	-144.44	-215.8	-154.3	265.3	258.8	6.51	40.772	
1,800.0	1,800.0	1,812.2	1,812.1	3.9	3.0	-144.36	-215.5	-154.5	265.1	258.2	6.94	38.201	
1,831.8	1,831.8	1,843.8	1,843.8	4.0	3.1	-144.33	-215.4	-154.6	265.1	258.0	7.08	37.457	
1,900.0	1,900.0	1,911.7	1,911.7	4.2	3.2	-144.28	-215.2	-154.8	265.1	257.8	7.37	35.959	
2,000.0	2,000.0	2,011.7	2,011.7	4.4	3.4	-144.21	-215.2	-155.1	265.3	257.5	7.81	33.983	
2,100.0	2,100.0	2,112.2	2,112.1	4.6	3.6	-144.17	-215.1	-155.3	265.3	257.1	8.24	32.201	
2,200.0	2,200.0	2,212.8	2,212.8	4.8	3.8	-144.12	-214.8	-155.4	265.2	256.5	8.67	30.567	
2,300.0	2,300.0	2,313.5	2,313.5	5.1	4.1	-143.99	-214.1	-155.6	264.7	255.6	9.11	29.055	
2,400.0	2,400.0	2,413.5	2,413.5	5.3	4.3	-143.84	-213.2	-155.9	264.1	254.6	9.55	27.671	
2,500.0	2,500.0	2,513.0	2,513.0	5.5	4.5	-143.77	-212.6	-155.8	263.6	253.6	9.98	26.416	
2,600.0	2,600.0	2,612.8	2,612.8	5.7	4.7	-143.71	-212.2	-155.8	263.2	252.8	10.41	25.279	
2,700.0	2,700.0	2,712.3	2,712.3	5.9	4.9	24.99	-211.7	-156.0	261.4	250.6	10.81	24.180	
2,800.0	2,799.8	2,811.9	2,811.9	6.1	5.1	25.62	-211.4	-156.3	256.6	245.4	11.18	22.963	
2,900.0	2,899.5	2,907.6	2,907.6	6.3	5.3	26.51	-212.0	-156.7	249.5	238.0	11.53	21.645	
3,000.0	2,998.7	3,002.5	3,002.4	6.5	5.5	27.69	-214.1	-157.7	241.1	229.2	11.87	20.307	
3,100.0	3,097.6	3,097.5	3,097.4	6.7	5.7	29.45	-217.2	-160.7	232.4	220.1	12.24	18.976	
3,200.0	3,196.4	3,194.7	3,194.4	6.9	5.9	31.44	-221.0	-164.8	225.0	212.4	12.65	17.792	
3,300.0	3,295.3	3,285.9	3,285.3	7.1	6.1	33.26	-226.6	-169.6	220.2	207.2	13.04	16.883	
3,400.0	3,394.1	3,380.5	3,379.2	7.3	6.3	34.82	-235.6	-175.9	219.1	205.7	13.46	16.280	
3,409.4	3,403.4	3,389.6	3,388.2	7.4	6.3	34.93	-236.6	-176.5	219.1	205.6	13.50	16.231	
3,500.0	3,493.0	3,477.4	3,475.2	7.6	6.6	35.82	-247.6	-181.9	219.7	205.8	13.89	15.822	
3,600.0	3,591.8	3,574.6	3,571.2	7.8	6.8	36.66	-260.9	-188.5	221.7	207.3	14.32	15.477	
3,700.0	3,690.7	3,677.2	3,672.6	8.1	7.1	37.55	-274.9	-195.4	223.7	208.9	14.78	15.138	
3,800.0	3,789.5	3,778.4	3,772.8	8.4	7.3	38.34	-288.3	-201.4	224.8	209.6	15.23	14.757	
3,900.0	3,888.3	3,879.0	3,872.3	8.7	7.6	38.89	-302.0	-206.4	225.6	209.9	15.70	14.369	
4,000.0	3,987.2	3,979.4	3,971.6	8.9	7.8	39.41	-315.7	-211.2	226.1	210.0	16.17	13.987	
4,100.0	4,086.0	4,079.4	4,070.7	9.2	8.1	39.97	-329.1	-215.9	226.6	209.9	16.65	13.611	
4,200.0	4,184.9	4,175.0	4,165.2	9.5	8.3	40.62	-342.1	-221.5	228.0	210.9	17.13	13.314	
4,300.0	4,283.7	4,276.5	4,265.5	9.8	8.6	41.51	-355.9	-228.7	230.4	212.8	17.63	13.070	
4,400.0	4,382.6	4,377.5	4,365.5	10.1	8.9	42.55	-368.3	-235.4	231.9	213.7	18.15	12.776	
4,500.0	4,481.4	4,478.2	4,465.1	10.5	9.2	43.37	-381.4	-241.6	233.3	214.7	18.67	12.499	
4,600.0	4,580.3	4,581.2	4,567.2	10.8	9.5	44.09	-394.5	-246.7	233.7	214.5	19.20	12.172	
4,617.7	4,597.8	4,598.6	4,584.4	10.8	9.5	44.21	-396.7	-247.5	233.7	214.4	19.29	12.113	
4,700.0	4,679.1	4,679.5	4,664.5	11.1	9.7	44.76	-407.0	-251.5	234.0	214.2	19.73	11.859	
4,800.0	4,778.0	4,780.3	4,764.4	11.4	10.0	45.51	-419.7	-256.7	234.5	214.2	20.27	11.567	

CC - Min centre to center distance or convergent point, SF - min separation factor, ES - min ellipse separation

Offset Design PARK T-P-4HZ PAD SEC.4-T4N-R63W - PARK T-P-4HZ (Exist.) - Wellbore #1 - Wellbore #1													Offset Site Error: 0.0 ft	
Survey Program: 760-MWD													Offset Well Error: 0.0 ft	
Reference		Offset		Semi Major Axis			Distance				Warning			
Measured Depth (ft)	Vertical Depth (ft)	Measured Depth (ft)	Vertical Depth (ft)	Reference (ft)	Offset (ft)	Highside Toolface (°)	Offset Wellbore Centre +N/-S (ft)	+E/-W (ft)	Between Centres (ft)	Between Ellipses (ft)			Minimum Separation (ft)	Separation Factor
4,900.0	4,876.8	4,885.6	4,868.9	11.7	10.3	46.54	-431.5	-261.6	234.0	213.1	20.83	11.230		
5,000.0	4,975.7	4,991.2	4,974.1	12.1	10.6	48.05	-440.2	-265.0	230.6	209.2	21.42	10.768		
5,100.0	5,074.5	5,095.2	5,077.9	12.4	10.8	49.93	-446.5	-267.3	225.6	203.5	22.01	10.246		
5,200.0	5,173.3	5,199.7	5,182.4	12.7	11.1	52.46	-450.0	-268.4	218.5	195.8	22.64	9.649		
5,300.0	5,272.2	5,299.3	5,281.9	13.1	11.3	55.39	-451.7	-268.9	210.7	187.4	23.27	9.052		
5,400.0	5,371.0	5,398.5	5,381.1	13.4	11.5	58.66	-452.8	-269.6	203.4	179.5	23.93	8.500		
5,500.0	5,469.9	5,497.5	5,480.1	13.7	11.7	62.25	-453.6	-270.3	196.8	172.2	24.60	7.999		
5,600.0	5,569.0	5,596.7	5,579.3	14.0	11.9	65.52	-454.3	-271.0	191.8	166.6	25.20	7.611		
5,700.0	5,668.5	5,696.5	5,679.1	14.3	12.1	68.09	-454.7	-271.8	188.8	163.0	25.74	7.333		
5,800.0	5,768.3	5,796.4	5,779.0	14.5	12.2	69.83	-454.9	-272.5	187.2	161.0	26.22	7.139		
5,850.2	5,818.4	5,846.1	5,828.6	14.6	12.3	70.50	-454.5	-272.9	187.0	160.5	26.44	7.072 CC		
5,900.0	5,868.3	5,896.1	5,878.5	14.7	12.4	71.87	-451.1	-273.9	187.2	160.5	26.66	7.021 ES		
6,000.0	5,968.3	5,998.4	5,978.6	14.8	12.5	-90.16	-430.4	-275.7	187.7	160.6	27.07	6.933		
6,100.0	6,068.1	6,085.3	6,060.7	15.0	12.6	-83.57	-402.2	-277.6	192.3	164.9	27.42	7.011		
6,200.0	6,165.8	6,174.7	6,140.3	15.0	12.6	-76.10	-361.9	-281.9	203.0	175.6	27.44	7.400		
6,300.0	6,257.8	6,263.7	6,211.9	14.9	12.6	-69.86	-309.5	-285.8	215.6	188.5	27.09	7.957		
6,400.0	6,340.7	6,346.1	6,269.2	14.7	12.6	-64.77	-250.4	-287.4	227.5	201.1	26.45	8.603		
6,500.0	6,411.5	6,422.2	6,313.3	14.6	12.7	-61.21	-188.4	-290.9	241.2	215.5	25.70	9.386		
6,600.0	6,467.5	6,491.6	6,345.6	14.5	13.0	-59.15	-127.4	-297.1	256.3	231.2	25.11	10.206		
6,700.0	6,506.7	6,563.5	6,370.1	14.5	13.4	-58.28	-60.6	-307.3	273.1	248.1	25.00	10.925		
6,800.0	6,533.1	6,640.7	6,386.3	14.8	13.9	-58.79	13.7	-319.7	291.5	265.8	25.70	11.342		
6,900.0	6,553.5	6,725.9	6,393.0	15.2	14.7	-57.06	97.7	-331.9	312.5	286.1	26.38	11.847		
7,000.0	6,557.0	6,818.1	6,392.4	15.9	15.7	-57.00	189.2	-343.4	327.4	299.6	27.85	11.757		
7,100.0	6,557.0	6,937.0	6,390.7	16.8	16.9	-58.17	307.4	-355.6	339.2	309.3	29.89	11.348		
7,200.0	6,557.0	7,043.1	6,393.3	17.8	18.1	-59.36	413.3	-362.1	345.4	313.3	32.10	10.760		
7,300.0	6,557.0	7,140.5	6,394.1	19.0	19.4	-60.13	510.6	-367.5	352.1	317.6	34.49	10.210		
7,400.0	6,557.0	7,252.6	6,395.5	20.2	20.8	-60.93	622.5	-372.1	357.5	320.4	37.09	9.639		
7,500.0	6,557.0	7,345.7	6,398.4	21.6	22.2	-61.82	715.5	-375.9	361.9	322.2	39.75	9.104		
7,600.0	6,557.0	7,442.3	6,398.6	23.1	23.6	-62.36	812.0	-380.2	368.0	325.5	42.52	8.655		
7,700.0	6,557.0	7,543.1	6,398.5	24.6	25.1	-62.82	912.7	-384.3	374.0	328.7	45.39	8.241		
7,800.0	6,557.0	7,636.4	6,397.8	26.1	26.6	-63.23	1,005.9	-389.1	381.4	333.1	48.23	7.906		
7,900.0	6,557.0	7,736.2	6,396.8	27.7	28.2	-63.65	1,105.5	-394.7	389.2	337.9	51.29	7.588		
8,000.0	6,557.0	7,847.5	6,395.7	29.4	29.9	-63.99	1,216.7	-399.2	395.7	341.2	54.50	7.262		
8,100.0	6,557.0	7,945.6	6,396.4	31.1	31.5	-64.46	1,314.7	-402.6	400.9	343.2	57.65	6.954		
8,200.0	6,557.0	8,046.2	6,396.0	32.8	33.1	-64.73	1,415.3	-405.2	405.9	345.1	60.81	6.675		
8,300.0	6,557.0	8,138.1	6,398.1	34.5	34.6	-65.42	1,507.1	-409.8	411.9	347.9	64.04	6.432		
8,400.0	6,557.0	8,229.6	6,398.8	36.2	36.2	-66.00	1,598.3	-416.1	420.3	353.0	67.34	6.242		
8,500.0	6,557.0	8,333.4	6,398.7	38.0	38.0	-66.51	1,701.9	-423.0	428.9	358.1	70.79	6.058		
8,600.0	6,557.0	8,429.0	6,398.7	39.8	39.6	-66.99	1,797.3	-429.4	437.5	363.3	74.16	5.899		
8,700.0	6,557.0	8,539.5	6,397.7	41.5	41.5	-67.33	1,907.6	-435.8	445.6	367.9	77.71	5.734		
8,800.0	6,557.0	8,637.6	6,397.5	43.3	43.2	-67.60	2,005.7	-439.1	451.3	370.2	81.06	5.567		
8,900.0	6,557.0	8,726.6	6,398.0	45.1	44.7	-68.08	2,094.4	-445.3	460.0	375.6	84.39	5.451		
9,000.0	6,557.0	8,820.7	6,399.3	47.0	46.3	-68.70	2,188.2	-453.3	469.9	382.0	87.93	5.344		
9,100.0	6,557.0	8,930.1	6,398.6	48.8	48.3	-69.15	2,297.1	-462.5	480.6	388.9	91.68	5.242		
9,200.0	6,557.0	9,037.2	6,399.0	50.6	50.2	-69.54	2,404.2	-467.9	487.6	392.3	95.37	5.113		
9,300.0	6,557.0	9,133.2	6,398.8	52.4	51.8	-69.82	2,500.0	-472.9	495.1	396.3	98.83	5.010		
9,400.0	6,557.0	9,224.3	6,397.3	54.3	53.5	-69.98	2,591.0	-478.4	503.8	401.6	102.21	4.929		
9,500.0	6,557.0	9,332.9	6,395.8	56.1	55.4	-70.17	2,699.3	-484.7	512.2	406.4	105.83	4.840		
9,600.0	6,557.0	9,427.7	6,395.2	58.0	57.0	-70.42	2,793.9	-490.3	520.5	411.2	109.31	4.762		
9,700.0	6,557.0	9,532.5	6,396.9	59.8	58.9	-70.94	2,898.5	-497.0	528.5	415.4	113.08	4.674		
9,800.0	6,557.0	9,622.5	6,398.4	61.7	60.5	-71.40	2,988.3	-503.4	537.2	420.6	116.65	4.606		
9,900.0	6,557.0	9,714.8	6,397.1	63.5	62.2	-71.59	3,080.3	-510.4	547.5	427.3	120.14	4.557		

Company:	BONANZA CREEK ENERGY OPERATING	Local Co-ordinate Reference:	Well Park T-P-4HC
Project:	SEC.4-T4N-R63W	TVD Reference:	WELL @ 4628.0ft (RKB - 13')
Reference Site:	Park T-4 Pad Sec.4-T4N-R63W	MD Reference:	WELL @ 4628.0ft (RKB - 13')
Site Error:	0.0ft	North Reference:	True
Reference Well:	Park T-P-4HC	Survey Calculation Method:	Minimum Curvature
Well Error:	0.0ft	Output errors are at	2.00 sigma
Reference Wellbore	Wellbore #1	Database:	Landmark
Reference Design:	Plan #1 (10-30-13)	Offset TVD Reference:	Offset Datum

Offset Design PARK T-P-4HZ PAD SEC.4-T4N-R63W - PARK T-P-4HZ (Exist.) - Wellbore #1 - Wellbore #1												Offset Site Error:	0.0 ft
Survey Program: 760-MWD												Offset Well Error:	0.0 ft
Reference		Offset		Semi Major Axis			Distance						
Measured Depth (ft)	Vertical Depth (ft)	Measured Depth (ft)	Vertical Depth (ft)	Reference (ft)	Offset (ft)	Highside Toolface (°)	Offset Wellbore Centre +N/-S (ft)	+E/-W (ft)	Between Centres (ft)	Between Ellipses (ft)	Minimum Separation (ft)	Separation Factor	Warning
10,000.0	6,557.0	9,827.6	6,395.2	65.4	64.2	-71.78	3,192.7	-519.2	558.0	434.0	123.92	4.503	
10,100.0	6,557.0	9,924.6	6,394.9	67.3	65.9	-72.05	3,289.4	-525.9	567.2	439.7	127.51	4.449	
10,200.0	6,557.0	10,024.0	6,396.4	69.1	67.6	-72.47	3,388.7	-532.5	575.6	444.4	131.21	4.387	
10,300.0	6,557.0	10,120.5	6,396.6	71.0	69.4	-72.78	3,484.9	-539.5	585.0	450.1	134.88	4.337	
10,400.0	6,557.0	10,238.7	6,395.5	72.9	71.5	-72.95	3,602.9	-546.1	593.2	454.4	138.81	4.274	
10,500.0	6,557.0	10,329.6	6,397.4	74.8	73.1	-73.34	3,693.7	-551.0	600.4	458.0	142.39	4.216	
10,600.0	6,557.0	10,437.3	6,398.5	76.6	75.1	-73.67	3,801.2	-556.8	607.8	461.6	146.26	4.156	
10,700.0	6,557.0	10,531.4	6,398.6	78.5	76.8	-73.87	3,895.1	-561.4	615.0	465.2	149.83	4.105	
10,800.0	6,557.0	10,632.2	6,397.8	80.4	78.6	-74.01	3,995.8	-567.0	623.1	469.7	153.46	4.061	
10,900.0	6,557.0	10,734.7	6,397.6	82.3	80.4	-74.17	4,098.2	-571.5	630.0	472.8	157.14	4.009	
11,000.0	6,557.0	10,829.0	6,397.9	84.1	82.1	-74.36	4,192.4	-575.8	636.9	476.2	160.72	3.963	
11,100.0	6,557.0	10,917.7	6,398.2	86.0	83.6	-74.58	4,280.9	-581.2	645.3	481.1	164.20	3.930	
11,200.0	6,557.0	11,010.1	6,399.4	87.9	85.3	-74.90	4,373.1	-588.2	654.9	487.0	167.84	3.902	
11,280.9	6,557.0	11,081.2	6,399.5	89.1	86.6	-75.10	4,443.8	-594.8	664.2	493.8	170.42	3.897 SF	

Company:	BONANZA CREEK ENERGY OPERATING	Local Co-ordinate Reference:	Well Park T-P-4HC
Project:	SEC.4-T4N-R63W	TVD Reference:	WELL @ 4628.0ft (RKB - 13')
Reference Site:	Park T-4 Pad Sec.4-T4N-R63W	MD Reference:	WELL @ 4628.0ft (RKB - 13')
Site Error:	0.0ft	North Reference:	True
Reference Well:	Park T-P-4HC	Survey Calculation Method:	Minimum Curvature
Well Error:	0.0ft	Output errors are at	2.00 sigma
Reference Wellbore	Wellbore #1	Database:	Landmark
Reference Design:	Plan #1 (10-30-13)	Offset TVD Reference:	Offset Datum

Reference Depths are relative to WELL @ 4628.0ft (RKB - 13')

Offset Depths are relative to Offset Datum

Central Meridian is -105.500000 °

Coordinates are relative to: Park T-P-4HC

Coordinate System is US State Plane 1983, Colorado Northern Zone

Grid Convergence at Surface is: 0.69°



Reference Depths are relative to WELL @ 4628.0ft (RKB - 13')	Coordinates are relative to: Park T-P-4HC
Offset Depths are relative to Offset Datum	Coordinate System is US State Plane 1983, Colorado Northern Zone
Central Meridian is -105.500000 °	Grid Convergence at Surface is: 0.69°

