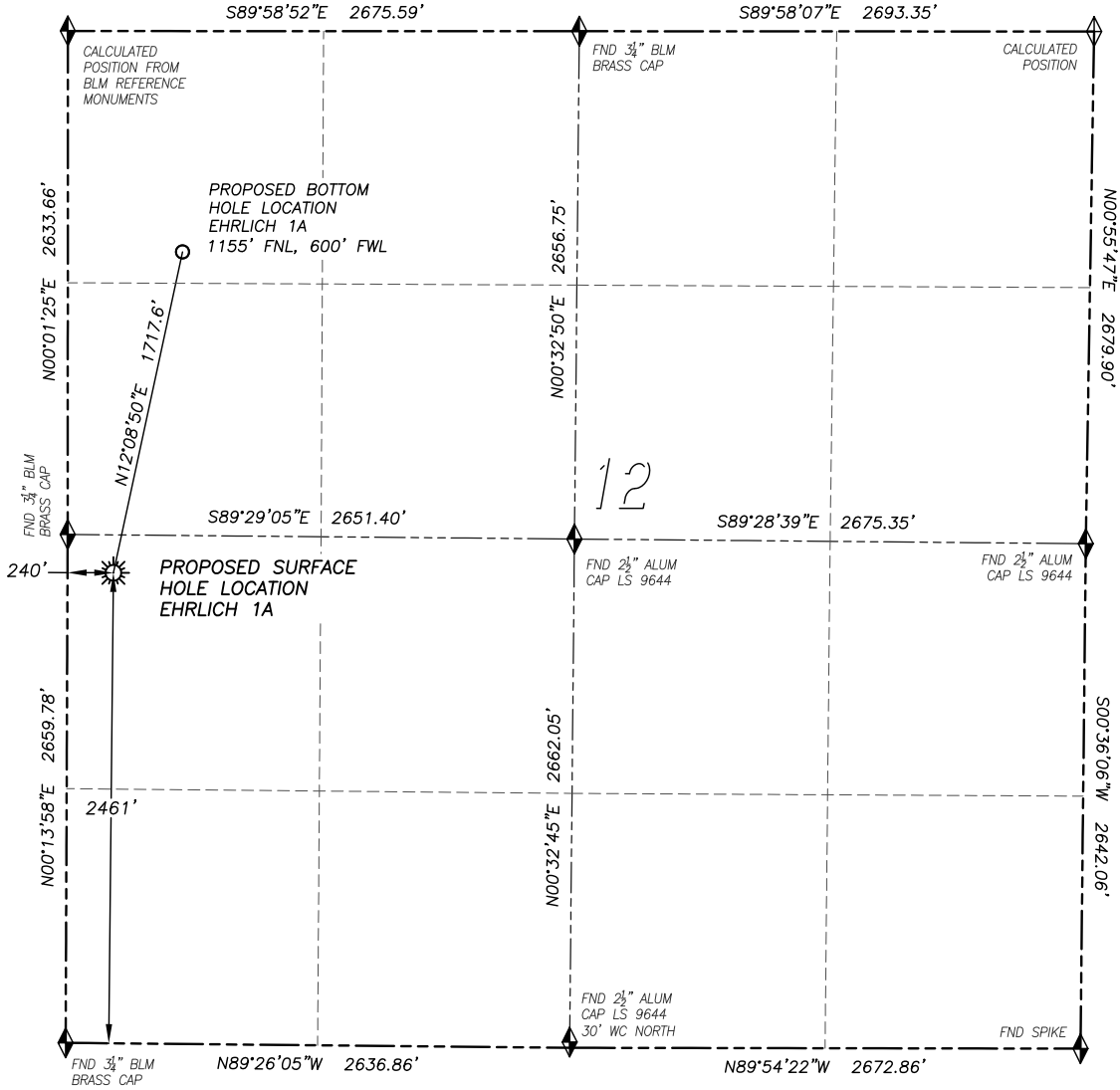


WELL LOCATION CERTIFICATE EHRlich 1A

SECTION 12, TOWNSHIP 4 NORTH, RANGE 60 WEST OF THE 6TH PRINCIPAL MERIDIAN



LEGEND

- ◆ FOUND MONUMENT AS DESCRIBED
- ☀ PROPOSED WELL
- ⊙ EXISTING WELL
- BOTTOM HOLE
- ⊘ ABANDONED WELL
- ◆ CALCULATED POSITION

NAD 83 LATITUDE AND LONGITUDE

EHRlich 1A SURFACE HOLE:
 LATITUDE: N40.32672°
 LONGITUDE: W104.05431°
 ELEVATION: 4462'
 FOOTAGE: 2461' FSL, 240' FWL
 PDOP: 2.1
 QTR/QTR: NW4/SW4

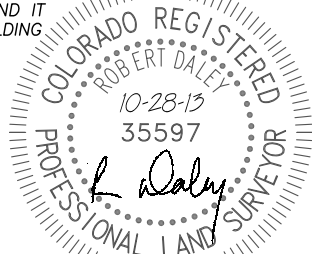
BOTTOM HOLE:
 LATITUDE: N40.33133°
 LONGITUDE: W104.05301°
 FOOTAGE: 1155' FNL, 600' FWL

NEAREST EXISTING WELL:
 THERE ARE NO EXISTING WELLS IN THIS SECTION

IN ACCORDANCE WITH A REQUEST FROM AURORA POWER RESOURCES INC., DALEY LAND SURVEYING, INC. HAS DETERMINED THE SURFACE LOCATION OF THE EHRlich 1A WELL TO BE 2461' FSL, 240' FWL, AS MEASURED AT NINETY (90) DEGREES FROM THE SECTION LINES OF SECTION 12, TOWNSHIP 4 NORTH, RANGE 60 WEST OF THE 6TH PRINCIPAL MERIDIAN, MORGAN COUNTY, COLORADO. THE BOTTOM HOLE LOCATION, PROVIDED BY THE CLIENT, IS TO BE 1155' FNL, 600' FWL.

I HEREBY CERTIFY THAT THIS WELL LOCATION CERTIFICATE WAS PREPARED BY ME OR UNDER MY DIRECT SUPERVISION, THAT THE WORK WAS COMPLETED ON 10/23/2013 FOR AND ON BEHALF OF AURORA POWER RESOURCES INC., AND THAT THIS MAP DOES NOT REPRESENT A BOUNDARY SURVEY. IT IS NOT A LAND SURVEY PLAT OR AN IMPROVEMENT SURVEY PLAT AND IT IS NOT TO BE RELIED UPON FOR THE ESTABLISHMENT OF FENCE, BUILDING OR OTHER FUTURE IMPROVEMENT LINES.

- NOTES:**
- 1) BEARINGS FOR THIS MAP ARE ASSUMED AND BASED UPON GPS OBSERVATIONS MADE BETWEEN MONUMENTS LOCATED AT THE SOUTHWEST CORNER AND WEST QUARTER CORNER OF SECTION 12, T.4N., R.60W.
 - 2) HORIZONTAL DATUM IS NAD83.
 - 3) VERTICAL DATUM IS NAVD88 AND ORIGINATES FROM THE LOCAL C.O.R.S. NETWORK, UTILIZING THE GEOD09 MODEL.
 - 4) SEE LOCATION DRAWING FOR VISIBLE IMPROVEMENTS WITHIN 500' OF PROPOSED DISTURBED AREA.
 - 5) SURFACE USE: AGRICULTURAL.
 - 6) INST. OPERATOR: KYLE DALEY



FOR AND ON BEHALF OF
 DALEY LAND SURVEYING INC.,
 Robert Daley, PLS 35597

NOTICE: According to Colorado law you MUST commence any legal action based upon any defect in this W.L.C. within three years after you first discover such defect. In no event may any action based upon any such defect in this W.L.C. be commenced more than ten years from the date of the certification shown hereon.

\\Survey\1301003\Drawings\Ehrlich_1A.dwg