

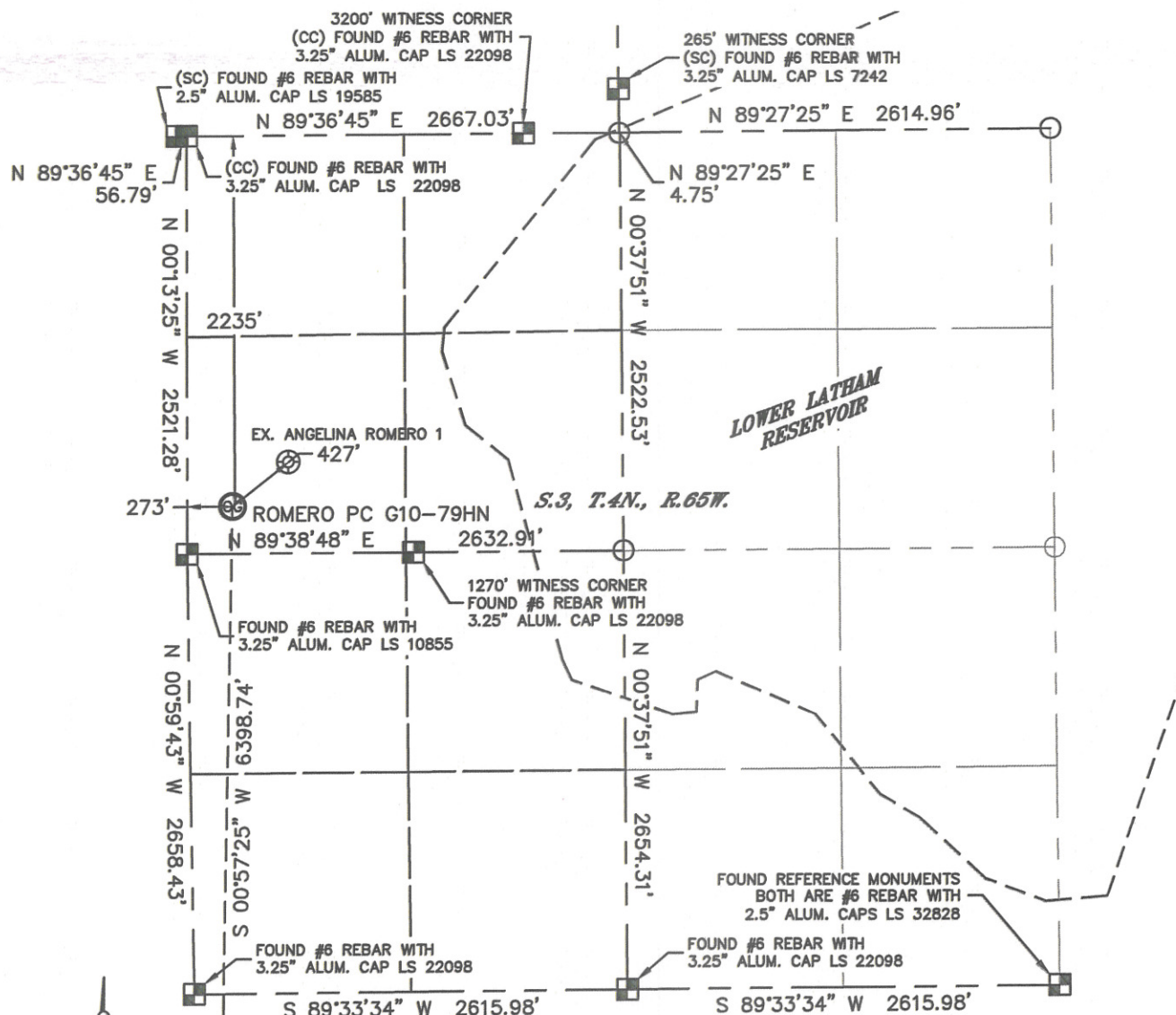


Lat40°, Inc. 1635 Foxtrail Drive, Suite 325 Loveland, CO 970-776-3321

WELL LOCATION CERTIFICATE

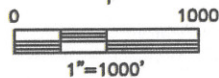
SECTION: 3
TOWNSHIP: 4N
RANGE: 65W

THIS MAP DOES NOT REPRESENT A BOUNDARY SURVEY



In accordance with a request from Erik Van Decar with Noble Energy Inc. Lat40°, Inc. has determined the surface location of the ROMERO PC G10-79HN to be 2235' from the NORTH line and 273' from the WEST line as measured at right angles from the section lines of Section 3, Township 4 North, Range 65 West and the bottom hole to be 1855' from the SOUTH line and 75' from the WEST line as measured at right angles from the section lines of Section 10, Township 4 North, Range 65 West of the Sixth Principal Meridian, County of Weld, State of Colorado.

I hereby state that this Well Location Certificate was prepared by me, or under my direct supervision, that the fieldwork was completed on 2/18/11, for and on behalf of Noble Energy Inc. That this is not a Land Survey Plat or an Improvement Survey Plat, and that it is not to be relied upon for establishment of fence, building, or other future improvement lines.



NOTE:

- 1) Bearings shown are Grid Bearings of the Colorado State Plane Coordinate System, North Zone, North American Datum 1983/2007. The lineal dimensions as contained herein are based upon the "U.S. Survey Foot."
 - 2) Ground elevations are based on an observed GPS elevation (NAVD 1988 DATUM).
 - 3) IMPROVEMENTS: See LOCATION DRAWING for all visible improvements within 400' of disturbed area.
 - 4) SURFACE USE: PASTURE
 - 5) INSTRUMENT OPERATOR: BRIAN BRINKMAN
 - 6) NEAREST EXISTING WELL: ANGELINA ROMERO 1, 427'
- NEAREST CULTURAL ITEMS:
BUILDING: 500' SW, B3
BUILDING UNIT: 657' SW, BU1
HIGH OCCUPANCY BUILDING UNIT: 5280'+
DESIGNATED OUTSIDE ACTIVITY AREA: 5280'+
PUBLIC ROAD: 294' W (CR 43)
ABOVEGROUND UTILITY: 277' W
RAILROAD: 5280'+
PROPERTY LINE: 273' WEST

SURFACE LOCATION
LATITUDE: 40.34236°N
LONGITUDE: 104.65775°W
PDOP: 1.5
ELEV: 4670'
1/4, 1/4: SW1/4NW1/4

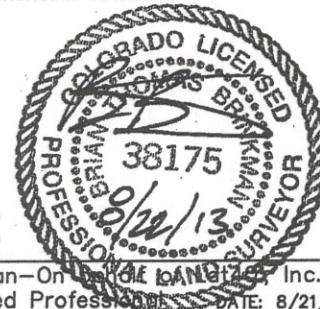
BOTTOM HOLE
LATITUDE: 40.32480°N
LONGITUDE: 104.65835°W

LEGEND

- = ALIQUOT MONUMENT AS DESCRIBED
○ = CALCULATED POSITION

SHEET 1 OF 2

Brian T. Brinkman—On behalf of Lat40°, Inc.
Colorado Licensed Professional Land Surveyor No. 38175
DATE: 8/21/2013
PROJECT#: 2011040



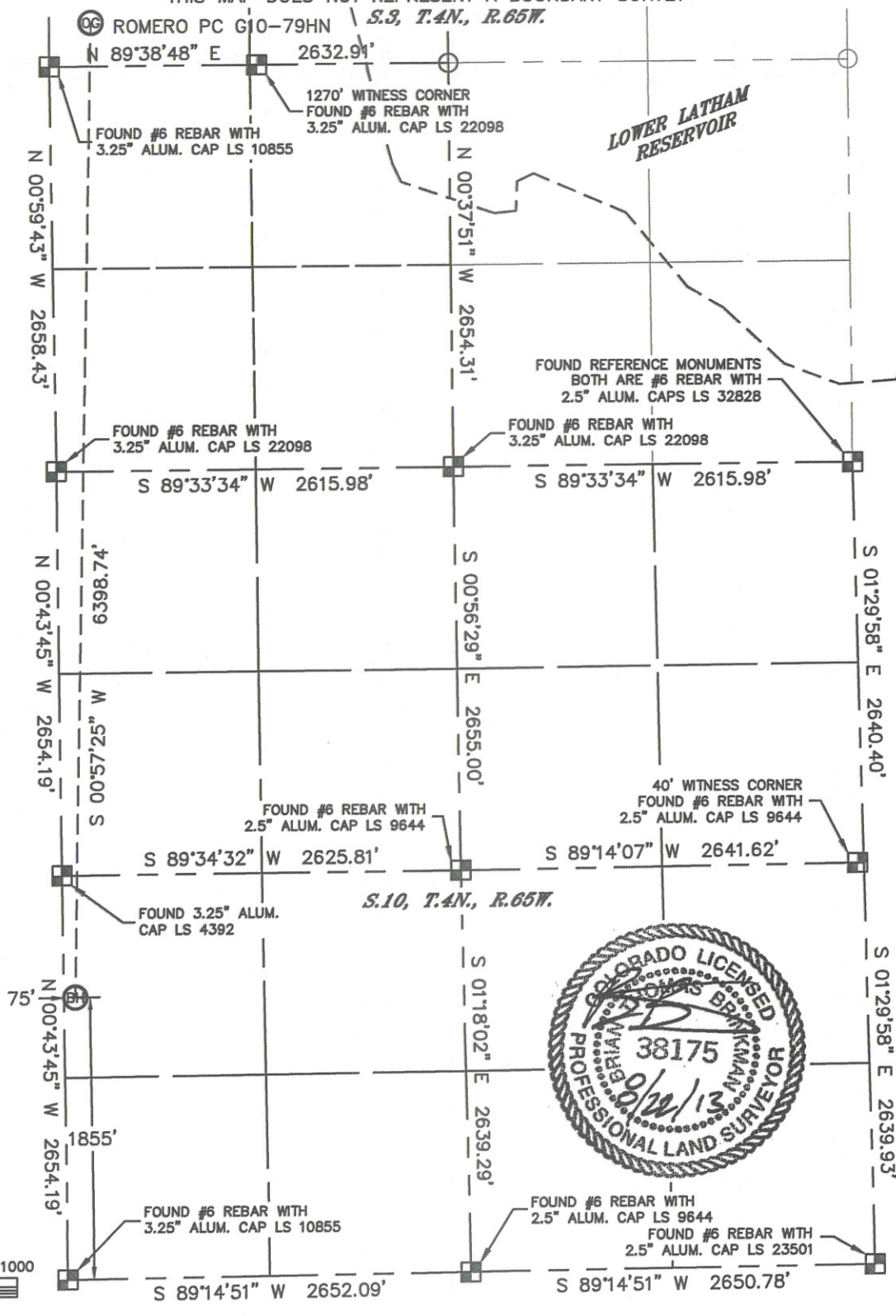


Lat40°, Inc. 1635 Foxtrail Drive, Suite 325 Loveland, CO 970-776-3321

WELL LOCATION CERTIFICATE

SECTION: 3
TOWNSHIP: 4N
RANGE: 65W

THIS MAP DOES NOT REPRESENT A BOUNDARY SURVEY



NOTE

According to Colorado law, you must commence any legal action based upon any defect in this W.L.C. within three years after you discover such defect. In no event, may any action based upon any defect in this survey be commenced more than ten years after the date of the certificate shown hereon. (13-80-105 C.R.S.)

LEGEND

- = ALIQUOT MONUMENT AS DESCRIBED
- = CALCULATED POSITION

SHEET 2 OF 2

Brian T. Brinkman—On behalf of Lat40°, Inc.
Colorado Licensed Professional
Land Surveyor No. 38175

DATE: 8/21/2013
PROJECT#: 2011040

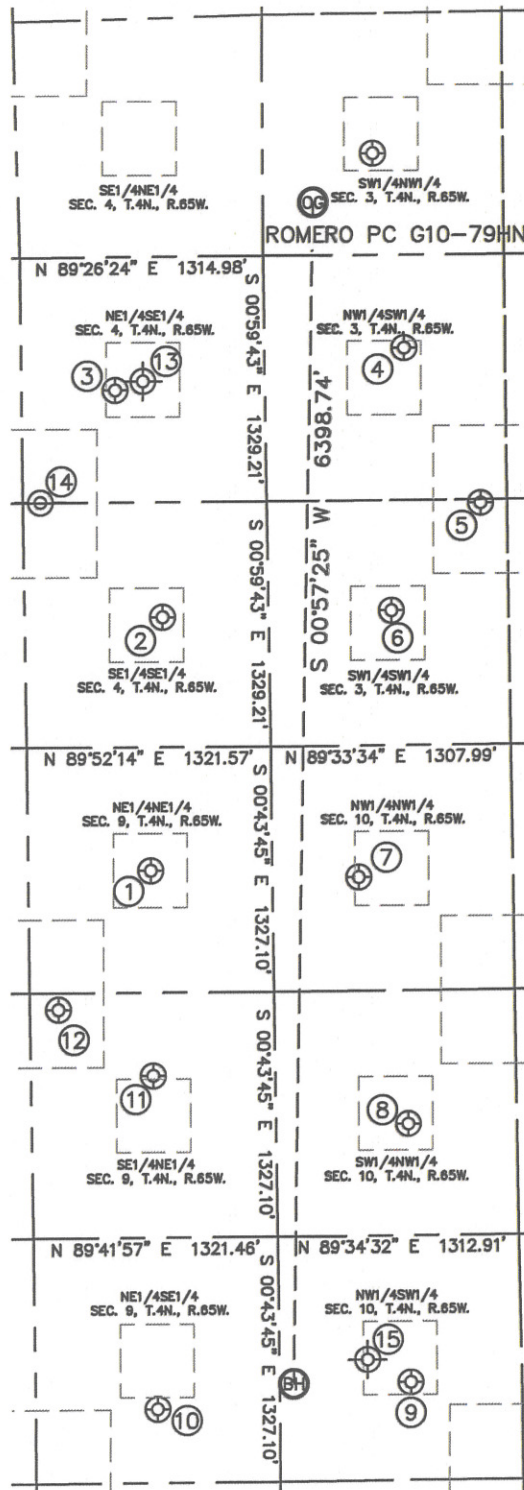


Lat40°, Inc. 1635 Foxtrail Drive, Suite 325 Loveland, CO 970-776-3321

SITE SKETCH

ROMERO PC G10-79HN

SECTION: 3
TOWNSHIP: 4N
RANGE: 65W



①

TODD 9-1
NE1/4NE1/4
668' FNL
658' FEL
LAT-40.33246°N
LONG-104.66101°W
PDOP: 1.6
ELEV: 4682'

②

BACKUS 4-16
SE1/4SE1/4
705' FSL
574' FEL
LAT-40.33622°N
LONG-104.66074°W
PDOP: 1.2
ELEV: 4675'

③

KALLAS 4-41
NE1/4SE1/4
1932' FSL
811' FEL
LAT-40.33960°N
LONG-104.66162°W
PDOP: 2.0
ELEV: 4675'

④

MCLELLAN 3-32
NW1/4SW1/4
2151' FSL
767' FWL
LAT-40.34018°N
LONG-104.65597°W
PDOP: 1.2
ELEV: 4672'

⑤

MCLELLAN 3-35
SW1/4SW1/4
1309' FSL
1167' FWL
LAT-40.33787°N
LONG-104.65451°W
PDOP: 1.1
ELEV: 4672'

⑥

MCLELLAN 3-1
SW1/4SW1/4
732' FSL
674' FWL
LAT-40.33628°N
LONG-104.65626°W
PDOP: 1.1
ELEV: 4676'

⑦

COLE 2
NW1/4NW1/4
710' FNL
473' FWL
LAT-40.33233°N
LONG-104.65695°W
PDOP: 1.0
ELEV: 4684'

⑧

COLE 12-10
SW1/4NW1/4
2051' FNL
722' FWL
LAT-40.32865°N
LONG-104.65604°W
PDOP: 3.5
ELEV: 4691'

⑨

LEE G10-12X
NW1/4SW1/4
1853' FSL
713' FWL
LAT-40.32480°N
LONG-104.65606°W
PDOP: 2.3
ELEV: 4703'

⑩

BETZ 1
NE1/4SE1/4
1725' FSL
662' FEL
LAT-40.32445°N
LONG-104.66099°W
PDOP: 2.0
ELEV: 4706'

⑪

BETZ 9-14
SE1/4NE1/4
1776' FNL
680' FEL
LAT-40.32942°N
LONG-104.66100°W
PDOP: 1.9
ELEV: 4688'

⑫

BETZ 9-15
SE1/4NE1/4
1420' FNL
1167' FEL
LAT-40.33040°N
LONG-104.66283°W
PDOP: 2.4
ELEV: 4687'

⑬

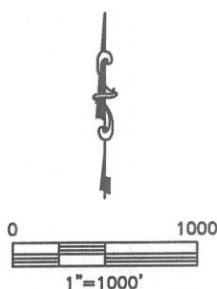
SELBY #1
(Plugged & Abandoned)
NE1/4SE1/4
1980' FSL (COGCC)
660' FEL (COGCC)
LAT-40.33962°N (COGCC)
LONG-104.66108°W (COGCC)
PDOP: N/A
ELEV: 4684' (COGCC)

⑭

KALLAS 4-45
(SHUT-IN)
NE1/4SE1/4
1326' FSL (COGCC)
1225' FEL (COGCC)
LAT-40.33796°N (COGCC)
LONG-104.66309°W (COGCC)
PDOP: N/A
ELEV: 4676' (COGCC)

⑮

LEE PM G10-12
(Plugged & Abandoned)
NW1/4SW1/4
1980' FSL (COGCC)
480' FWL (COGCC)
LAT-40.32506°N (COGCC)
LONG-104.65687°W (COGCC)
PDOP: N/A
ELEV: 4698' (COGCC)



DATE: 8/21/2013
PROJECT#: 2011040