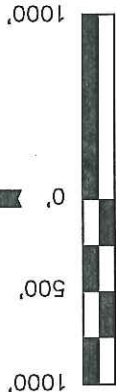


WEXPRO COMPANY

Well location, BW MUSSEY #48, located as shown in the NE 1/4 NW 1/4 of Section 9, T11N, R97W, 6th P.M., Moffat County, Colorado.

BASIS OF ELEVATION

SPOT ELEVATION LOCATED AT THE SOUTHEAST CORNER OF SECTION 4, T11N, R97W, 6th P.M. TAKEN FROM THE POWDER WASH QUADRANGLE, COLORADO, MOFFAT COUNTY, 7.5 MINUTE SERIES (TOPOGRAPHICAL MAP) PUBLISHED BY THE UNITED STATES DEPARTMENT OF THE INTERIOR, GEOLOGICAL SURVEY. SAID ELEVATION IS MARKED AS BEING 6644 FEET.



SCALE

CERTIFICATE

THIS IS TO CERTIFY THAT THE ABOVE PLAT WAS PREPARED FROM FIELD NOTES OF ACTUAL SURVEYS MADE BY ME OR UNDER MY SUPERVISION AND THAT THE SAME ARE TRUE AND CORRECT TO THE BEST OF MY KNOWLEDGE AND BELIEF.

REGISTERED LAND SURVEYOR
REGISTRATION NO. 411488
STATE OF COLORADO

REVISED: 02-03-11

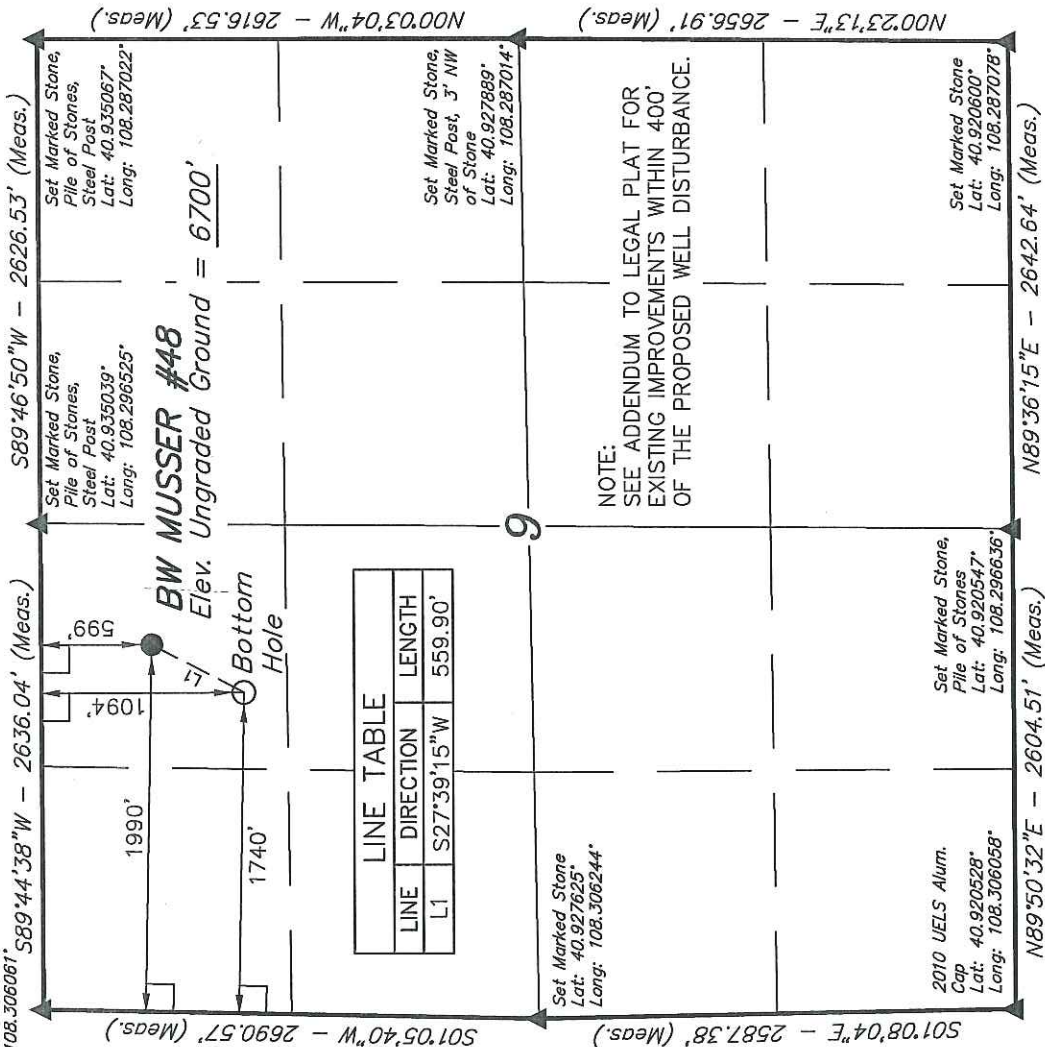
UNTAH ENGINEERING & LAND SURVEYING

85 SOUTH 200 EAST - VERNAL, UTAH 84078
(435) 789-1017

SCALE	1" = 1000'	DATE SURVEYED:	08-30-10	DATE DRAWN:	09-13-10
PARTY	D.K. B.H. S.L.	REFERENCES	G.L.O. PLAT		
WEATHER	WARM	FILE	WEXPRO COMPANY		

T11N, R97W, 6th P.M.

2007 UELS Alum.
Cap
Lat: 40.935006°
Long: 108.306081°



BASIS OF BEARINGS

BASIS OF BEARINGS IS A G.P.S. OBSERVATION. PDOP = 1.1

- LEGEND:
- = 90° SYMBOL
 - = PROPOSED WELL HEAD.
 - ▲ = SECTION CORNERS LOCATED.

NAD 83 (TARGET BOTTOM HOLE)	NAD 83 (SURFACE LOCATION)
LATITUDE = 40°55'55.30" (40.932028)	LATITUDE = 40°56'00.20" (40.933389)
LONGITUDE = 108°17'59.42" (108.299839)	LONGITUDE = 108°17'56.04" (108.298900)
NAD 27 (TARGET BOTTOM HOLE)	NAD 27 (SURFACE LOCATION)
LATITUDE = 40°55'55.43" (40.932064)	LATITUDE = 40°56'00.33" (40.933425)
LONGITUDE = 108°17'57.08" (108.299189)	LONGITUDE = 108°17'53.70" (108.298250)