

WPX Energy Rocky Mtn LLC

FINAL - dated 9/26/13

RWF 424-29

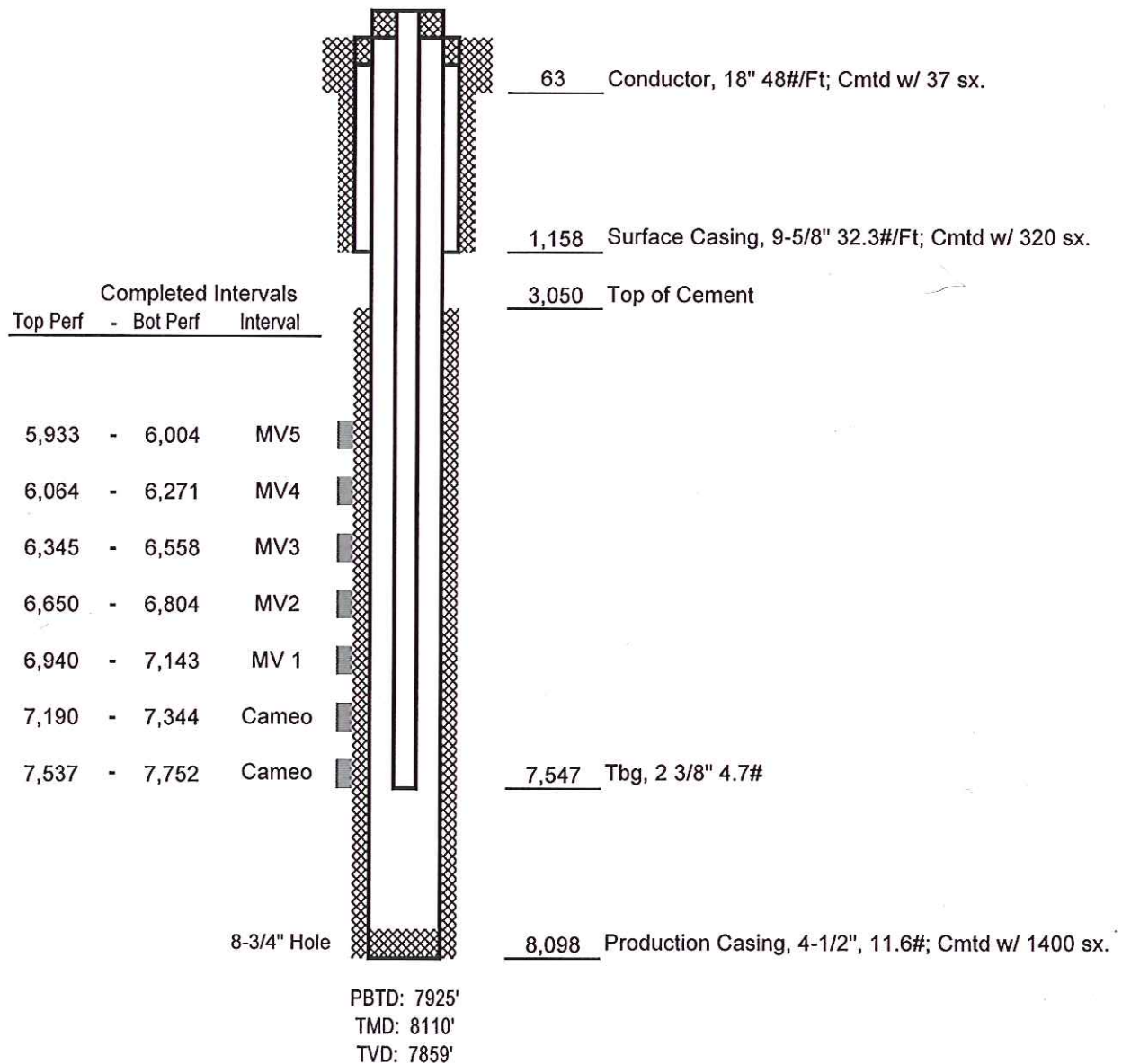
API #05-045-21661-00

518' FSL x 608' FWL - SHL - (SWSW)

714' FSL x 2151' FWL - BHL - (SESW)

Sec. 29-T6S-R94W

Garfield County, Colorado



Not to Scale