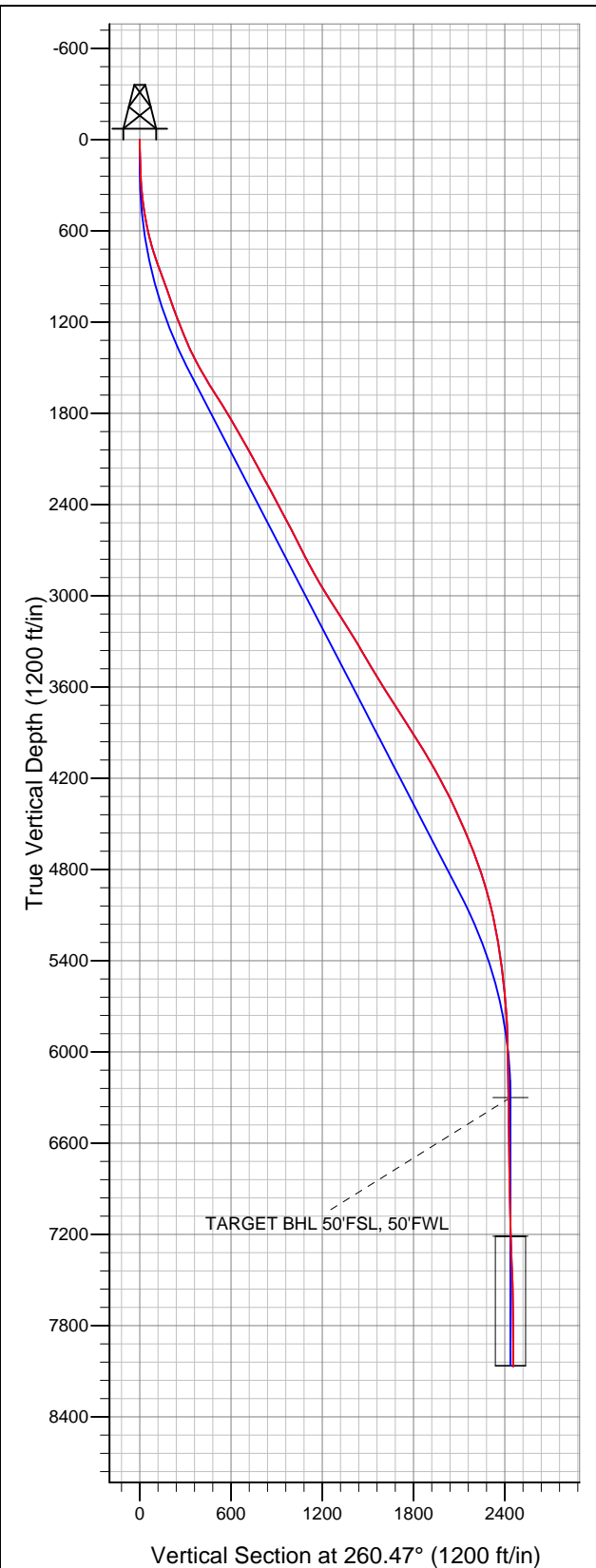
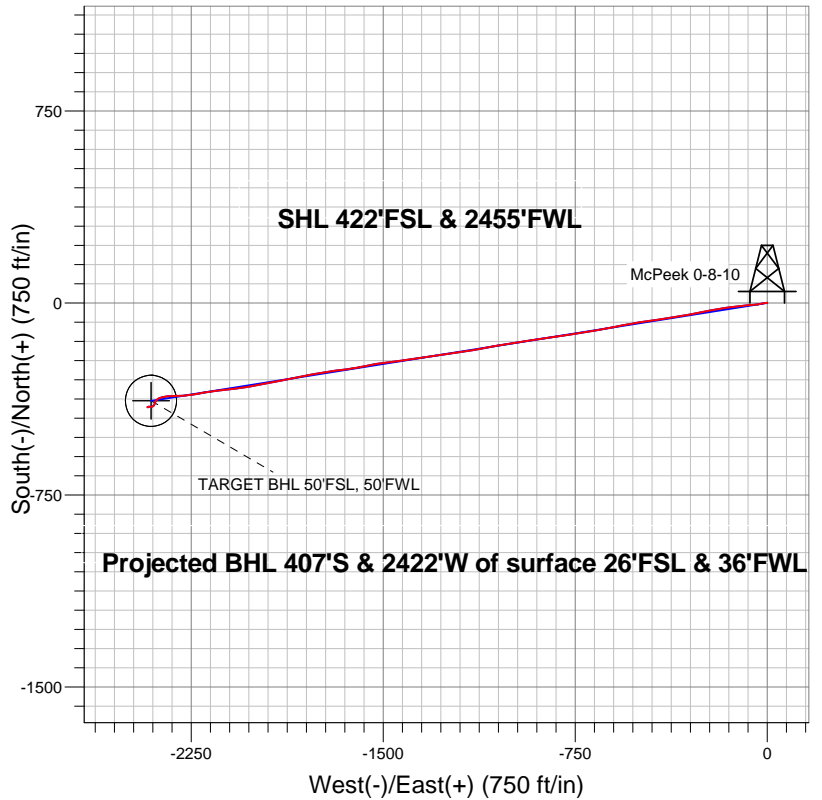


Well Name: McPeek 0-8-10

Surface Location: McPeek 2-8-10 Pad Sec.10-T2N-R66W
North American Datum 1983 US State Plane 1983 Colorado Northern Zone
Ground Elevation: 4988.0
+N/-S 0.0 +E/-W 0.0 Northing 1297089.13 Easting 3205753.15 Latitude 40.146560 Longitude -104.763980 Slot
Original Well Elev WELL @ 5001.0ft (Original Well Elev)



EnCana Oil & Gas Weld County CO



LEGEND

- △ McPeek 0-8-10, Wellbore #1, Plan #1 (8-07-13)R V0
- Wellbore #1
- Survey #1

Final Survey Plot

Projected Final Survey -
8643'MD & 8070'TVD @ 2455'VS
0.4 deg Inc 265.6 deg AZ

Project: SEC.10-T2N-R66W
Site: McPeek 2-8-10 Pad Sec.10-T2N-R66W
Well: McPeek 0-8-10
Plan: Wellbore #1



EnCana Oil & Gas Weld County CO

SEC.10-T2N-R66W

McPeck 2-8-10 Pad Sec.10-T2N-R66W

McPeck 0-8-10

Wellbore #1

Survey: Survey #1

Standard Survey Report

13 August, 2013

Survey	Wellbore Data									
	Measured Depth (ft)	Inclination (°)	Azimuth (°)	Vertical Depth (ft)	+N/-S (ft)	+E/-W (ft)	Vertical Section (ft)	Dogleg Rate (°/100ft)	Build Rate (°/100ft)	Turn Rate (°/100ft)
Main Survey	0.0	0.00	0.00	0.0	0.0	0.0	0.0	0.00	0.00	0.00
	48.0	0.90	281.30	48.0	0.1	-0.4	0.4	1.88	1.88	0.00
	138.0	1.60	268.80	138.0	0.2	-2.3	2.3	0.83	0.78	-13.89
	228.0	2.40	266.50	227.9	0.0	-5.5	5.4	0.89	0.89	-2.56
	318.0	4.60	262.50	317.7	-0.5	-10.9	10.9	2.46	2.44	-4.44
	409.0	7.30	255.30	408.2	-2.5	-20.1	20.3	3.07	2.97	-7.91
	499.0	9.10	261.60	497.3	-5.0	-32.7	33.1	2.23	2.00	7.00
	590.0	12.30	265.40	586.7	-6.8	-49.5	49.9	3.60	3.52	4.18
	681.0	15.00	264.40	675.2	-8.7	-70.9	71.3	2.98	2.97	-1.10
	773.0	18.60	263.90	763.2	-11.5	-97.3	97.9	3.92	3.91	-0.54
	872.0	20.20	263.30	856.6	-15.1	-130.0	130.7	1.63	1.62	-0.61
	1,006.0	19.40	261.20	982.7	-21.2	-175.0	176.1	0.80	-0.60	-1.57
	1,135.0	20.00	260.20	1,104.1	-28.3	-217.9	219.5	0.53	0.47	-0.78

Company:	EnCana Oil & Gas Weld County CO	Local Co-ordinate Reference:	Well McPeek 0-8-10
Project:	SEC.10-T2N-R66W	TVD Reference:	WELL @ 5001.0ft (Original Well Elev)
Site:	McPeek 2-8-10 Pad Sec.10-T2N-R66W	MD Reference:	WELL @ 5001.0ft (Original Well Elev)
Well:	McPeek 0-8-10	North Reference:	True
Wellbore:	Wellbore #1	Survey Calculation Method:	Minimum Curvature
Design:	Wellbore #1	Database:	Landmark

Survey										
Measured Depth (ft)	Inclination (°)	Azimuth (°)	Vertical Depth (ft)	+N/-S (ft)	+E/-W (ft)	Vertical Section (ft)	Dogleg Rate (°/100ft)	Build Rate (°/100ft)	Turn Rate (°/100ft)	
1,264.0	21.60	257.70	1,224.7	-37.1	-262.8	265.3	1.42	1.24	-1.94	
1,393.0	23.50	260.00	1,343.8	-46.6	-311.4	314.8	1.62	1.47	1.78	
1,522.0	27.90	261.20	1,460.1	-55.7	-366.5	370.7	3.43	3.41	0.93	
1,651.0	30.60	261.40	1,572.6	-65.2	-428.8	433.7	2.09	2.09	0.16	
1,780.0	32.70	261.10	1,682.4	-75.5	-495.7	501.4	1.63	1.63	-0.23	
1,909.0	31.40	259.60	1,791.7	-87.0	-563.2	569.8	1.18	-1.01	-1.16	
2,038.0	29.70	258.90	1,902.8	-99.2	-627.6	635.4	1.35	-1.32	-0.54	
2,167.0	29.50	259.80	2,015.0	-111.0	-690.3	699.1	0.38	-0.16	0.70	
2,296.0	28.50	261.80	2,127.8	-121.0	-752.0	761.6	1.08	-0.78	1.55	
2,425.0	28.70	262.50	2,241.1	-129.4	-813.1	823.4	0.30	0.16	0.54	
2,554.0	27.40	261.20	2,354.9	-138.0	-873.2	884.0	1.11	-1.01	-1.01	
2,683.0	28.30	260.50	2,469.0	-147.6	-932.7	944.3	0.74	0.70	-0.54	
2,811.0	27.60	261.90	2,582.1	-156.8	-992.0	1,004.2	0.75	-0.55	1.09	
2,940.0	26.80	259.10	2,696.8	-166.5	-1,050.1	1,063.2	1.17	-0.62	-2.17	
3,069.0	28.30	259.60	2,811.2	-177.5	-1,108.8	1,122.8	1.18	1.16	0.39	
3,198.0	30.20	261.20	2,923.7	-188.0	-1,170.9	1,185.9	1.59	1.47	1.24	
3,327.0	33.00	262.80	3,033.6	-197.4	-1,237.8	1,253.4	2.27	2.17	1.24	
3,456.0	32.00	260.20	3,142.4	-207.6	-1,306.4	1,322.7	1.33	-0.78	-2.02	
3,585.0	32.30	262.10	3,251.6	-218.1	-1,374.2	1,391.3	0.82	0.23	1.47	
3,714.0	30.20	263.50	3,361.9	-226.6	-1,440.6	1,458.2	1.72	-1.63	1.09	
3,843.0	31.00	261.80	3,472.9	-235.0	-1,505.7	1,523.8	0.91	0.62	-1.32	
3,972.0	31.20	257.70	3,583.4	-246.8	-1,571.2	1,590.4	1.65	0.16	-3.18	
4,101.0	33.10	262.10	3,692.6	-258.8	-1,638.8	1,659.0	2.34	1.47	3.41	
4,230.0	32.40	262.30	3,801.1	-268.3	-1,707.9	1,728.8	0.55	-0.54	0.16	
4,359.0	33.10	260.20	3,909.6	-278.9	-1,776.9	1,798.5	1.03	0.54	-1.63	
4,488.0	31.20	257.50	4,018.8	-292.1	-1,844.2	1,867.1	1.85	-1.47	-2.09	
4,616.0	28.80	259.30	4,129.7	-305.0	-1,906.9	1,931.1	2.00	-1.88	1.41	
4,726.0	28.80	259.10	4,226.1	-314.9	-1,958.9	1,984.1	0.09	0.00	-0.18	
4,854.0	26.40	260.50	4,339.5	-325.5	-2,017.3	2,043.3	1.94	-1.88	1.09	
4,983.0	23.10	261.80	4,456.6	-333.8	-2,070.6	2,097.3	2.59	-2.56	1.01	
5,111.0	24.20	264.70	4,573.9	-339.8	-2,121.6	2,148.6	1.25	0.86	2.27	
5,239.0	20.00	261.40	4,692.5	-345.5	-2,169.4	2,196.7	3.42	-3.28	-2.58	
5,368.0	19.10	259.80	4,814.0	-352.6	-2,212.0	2,239.8	0.81	-0.70	-1.24	
5,496.0	16.30	262.10	4,935.9	-358.7	-2,250.4	2,278.7	2.25	-2.19	1.80	
5,624.0	13.40	266.80	5,059.7	-362.0	-2,283.0	2,311.4	2.45	-2.27	3.67	
5,753.0	10.80	267.00	5,185.8	-363.5	-2,310.0	2,338.3	2.02	-2.02	0.16	
5,881.0	9.10	267.90	5,311.9	-364.5	-2,332.1	2,360.3	1.33	-1.33	0.70	
6,009.0	7.00	264.40	5,438.6	-365.6	-2,350.0	2,378.1	1.68	-1.64	-2.73	
6,137.0	6.70	254.90	5,565.7	-368.3	-2,365.0	2,393.3	0.91	-0.23	-7.42	
6,266.0	4.90	238.40	5,694.0	-373.2	-2,376.9	2,405.9	1.89	-1.40	-12.79	
6,395.0	3.90	225.90	5,822.6	-379.1	-2,384.8	2,414.6	1.07	-0.78	-9.69	
6,523.0	1.60	219.70	5,950.5	-383.5	-2,389.0	2,419.6	1.81	-1.80	-4.84	
6,651.0	1.60	196.40	6,078.4	-386.6	-2,390.7	2,421.7	0.50	0.00	-18.20	
6,780.0	0.70	178.79	6,207.4	-389.1	-2,391.2	2,422.6	0.74	-0.70	-13.65	
6,872.5	1.06	195.64	6,299.9	-390.5	-2,391.4	2,423.0	0.47	0.39	18.21	
TARGET BHL 50'FSL, 50'FWL										
6,951.0	1.40	202.70	6,378.4	-392.1	-2,392.0	2,423.9	0.47	0.43	9.00	
7,122.0	1.40	201.10	6,549.3	-396.0	-2,393.5	2,426.0	0.02	0.00	-0.94	
7,293.0	1.30	209.90	6,720.3	-399.6	-2,395.2	2,428.3	0.13	-0.06	5.15	
7,464.0	1.40	228.90	6,891.2	-402.7	-2,397.8	2,431.3	0.27	0.06	11.11	
7,635.0	1.50	250.70	7,062.2	-404.8	-2,401.5	2,435.3	0.33	0.06	12.75	
7,785.8	1.76	261.41	7,212.9	-405.8	-2,405.6	2,439.6	0.27	0.17	7.10	
TARGET CIRCLE 50'FSL & 50'FWL										
7,806.0	1.80	262.60	7,233.1	-405.9	-2,406.2	2,440.2	0.27	0.19	5.89	

Company:	EnCana Oil & Gas Weld County CO	Local Co-ordinate Reference:	Well McPeek 0-8-10
Project:	SEC.10-T2N-R66W	TVD Reference:	WELL @ 5001.0ft (Original Well Elev)
Site:	McPeek 2-8-10 Pad Sec.10-T2N-R66W	MD Reference:	WELL @ 5001.0ft (Original Well Elev)
Well:	McPeek 0-8-10	North Reference:	True
Wellbore:	Wellbore #1	Survey Calculation Method:	Minimum Curvature
Design:	Wellbore #1	Database:	Landmark

Survey									
Measured Depth (ft)	Inclination (°)	Azimuth (°)	Vertical Depth (ft)	+N/-S (ft)	+E/-W (ft)	Vertical Section (ft)	Dogleg Rate (°/100ft)	Build Rate (°/100ft)	Turn Rate (°/100ft)
7,977.0	2.60	280.40	7,404.0	-405.5	-2,412.7	2,446.6	0.61	0.47	10.41
8,148.0	1.20	221.30	7,574.9	-406.2	-2,417.7	2,451.6	1.31	-0.82	-34.56
8,320.0	0.40	290.40	7,746.9	-407.3	-2,419.5	2,453.5	0.65	-0.47	40.17
8,491.0	0.40	299.90	7,917.9	-406.8	-2,420.5	2,454.5	0.04	0.00	5.56
8,643.0	0.40	265.60	8,069.9	-406.6	-2,421.5	2,455.4	0.16	0.00	-22.57

Checked By: _____	Approved By: _____	Date: _____
-------------------	--------------------	-------------