

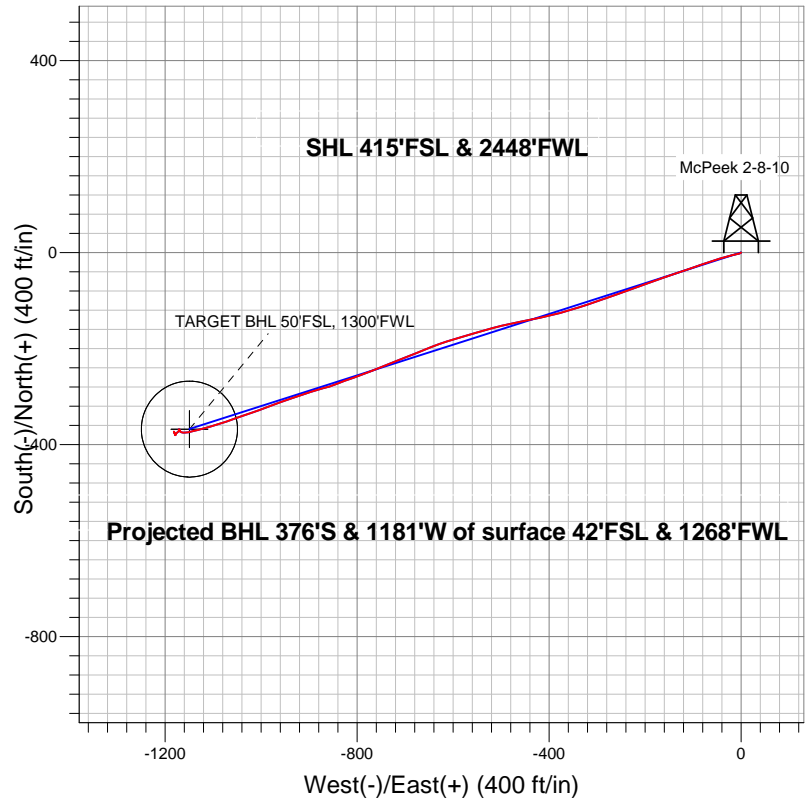
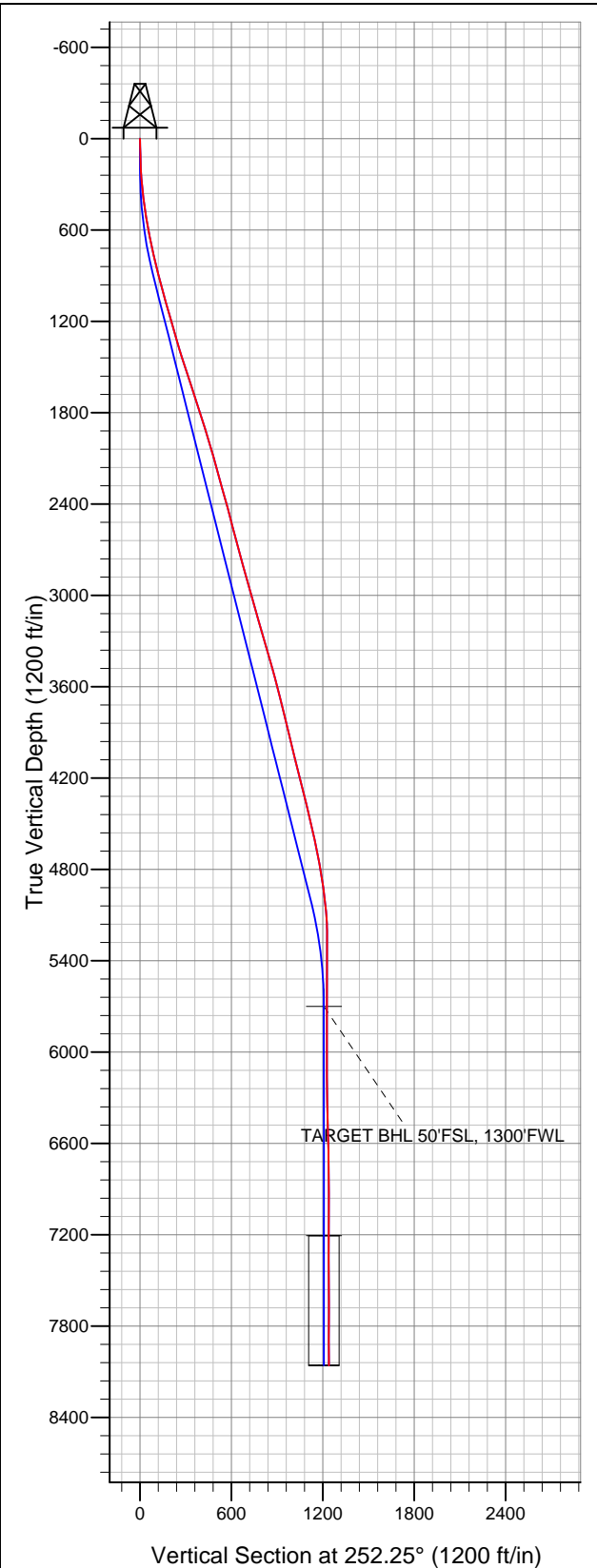


Well Name: McPeek 2-8-10

Surface Location: McPeek 2-8-10 Pad Sec.10-T2N-R66W
North American Datum 1983 US State Plane 1983 Colorado Northern Zone
Ground Elevation: 4988.0

+N/-S	+E/-W	Northing	Easting	Latitude	Longitude	Slot
0.0	0.0	1297081.79	3205744.82	40.146540	-104.764010	
		Original Well Elev	WELL @ 5001.0ft (Original Well Elev)			

EnCana Oil & Gas Weld County CO



LEGEND

- McPeek 2-8-10, Wellbore #1, Plan #1 (1-10-13) V0
- Wellbore #1
- Survey #1

Final Survey Plot

Projected Final Survey -
8218'MD & 8060'TVD @ 1239'VS
0.6 deg Inc 218.9 deg AZ

Project: SEC.10-T2N-R66W
Site: McPeek 2-8-10 Pad Sec.10-T2N-R66W
Well: McPeek 2-8-10
Plan: Wellbore #1



EnCana Oil & Gas Weld County CO

SEC.10-T2N-R66W

McPeck 2-8-10 Pad Sec.10-T2N-R66W

McPeck 2-8-10

Wellbore #1

Survey: Survey #1

Standard Survey Report

12 August, 2013

Survey	Wellbore Data									
	Measured Depth (ft)	Inclination (°)	Azimuth (°)	Vertical Depth (ft)	+N/-S (ft)	+E/-W (ft)	Vertical Section (ft)	Dogleg Rate (°/100ft)	Build Rate (°/100ft)	Turn Rate (°/100ft)
Main Wellbore	0.0	0.00	0.00	0.0	0.0	0.0	0.0	0.00	0.00	0.00
	107.0	2.00	231.70	107.0	-1.2	-1.5	1.7	1.87	1.87	0.00
	197.0	2.40	260.90	196.9	-2.4	-4.6	5.1	1.30	0.44	32.44
	287.0	5.20	257.40	286.7	-3.6	-10.4	11.0	3.12	3.11	-3.89
	378.0	6.90	254.00	377.2	-6.0	-19.7	20.6	1.91	1.87	-3.74
	468.0	8.30	254.90	466.4	-9.2	-31.1	32.5	1.56	1.56	1.00
	559.0	10.00	254.70	556.2	-13.0	-45.1	46.9	1.87	1.87	-0.22
	650.0	11.00	251.20	645.7	-17.9	-61.0	63.5	1.30	1.10	-3.85
	741.0	12.40	250.00	734.8	-24.0	-78.4	81.9	1.56	1.54	-1.32
	833.0	14.00	251.60	824.4	-30.9	-98.2	102.9	1.78	1.74	1.74
	874.0	14.70	251.70	864.1	-34.1	-107.8	113.1	1.71	1.71	0.24
	962.0	14.40	251.00	949.3	-41.2	-128.8	135.2	0.40	-0.34	-0.80
	1,091.0	15.90	250.90	1,073.8	-52.2	-160.7	168.9	1.16	1.16	-0.08

Company:	EnCana Oil & Gas Weld County CO	Local Co-ordinate Reference:	Well McPeck 2-8-10
Project:	SEC.10-T2N-R66W	TVD Reference:	WELL @ 5001.0ft (Original Well Elev)
Site:	McPeck 2-8-10 Pad Sec.10-T2N-R66W	MD Reference:	WELL @ 5001.0ft (Original Well Elev)
Well:	McPeck 2-8-10	North Reference:	True
Wellbore:	Wellbore #1	Survey Calculation Method:	Minimum Curvature
Design:	Wellbore #1	Database:	Landmark

Survey										
Measured Depth (ft)	Inclination (°)	Azimuth (°)	Vertical Depth (ft)	+N/-S (ft)	+E/-W (ft)	Vertical Section (ft)	Dogleg Rate (°/100ft)	Build Rate (°/100ft)	Turn Rate (°/100ft)	
1,220.0	16.10	250.70	1,197.8	-63.9	-194.2	204.5	0.16	0.16	-0.16	
1,348.0	16.20	249.50	1,320.8	-76.0	-227.7	240.0	0.27	0.08	-0.94	
1,477.0	17.40	250.90	1,444.2	-88.6	-262.8	277.3	0.98	0.93	1.09	
1,605.0	18.00	250.30	1,566.2	-101.5	-299.5	316.2	0.49	0.47	-0.47	
1,734.0	18.80	252.80	1,688.6	-114.4	-338.1	356.9	0.87	0.62	1.94	
1,862.0	17.50	254.90	1,810.2	-125.5	-376.4	396.8	1.14	-1.02	1.64	
1,991.0	17.10	257.50	1,933.4	-134.7	-413.6	435.0	0.67	-0.31	2.02	
2,120.0	16.10	258.60	2,057.0	-142.3	-449.7	471.7	0.81	-0.78	0.85	
2,248.0	15.70	258.10	2,180.1	-149.4	-484.0	506.5	0.33	-0.31	-0.39	
2,377.0	15.70	255.10	2,304.3	-157.5	-518.0	541.3	0.63	0.00	-2.33	
2,505.0	15.10	253.30	2,427.7	-166.7	-550.7	575.3	0.60	-0.47	-1.41	
2,634.0	14.40	254.20	2,552.5	-175.9	-582.2	608.1	0.57	-0.54	0.70	
2,763.0	14.90	251.60	2,677.3	-185.5	-613.4	640.8	0.64	0.39	-2.02	
2,891.0	15.50	248.40	2,800.8	-197.0	-644.9	674.3	0.81	0.47	-2.50	
3,020.0	16.30	248.60	2,924.9	-210.0	-677.8	709.5	0.62	0.62	0.16	
3,148.0	16.00	248.20	3,047.8	-223.1	-710.9	745.1	0.25	-0.23	-0.31	
3,277.0	15.60	247.50	3,171.9	-236.3	-743.4	780.1	0.34	-0.31	-0.54	
3,406.0	15.90	249.50	3,296.1	-249.1	-776.0	815.0	0.48	0.23	1.55	
3,534.0	16.40	249.80	3,419.0	-261.5	-809.4	850.6	0.40	0.39	0.23	
3,663.0	14.70	248.40	3,543.3	-273.8	-841.7	885.1	1.35	-1.32	-1.09	
3,791.0	14.50	256.10	3,667.2	-283.7	-872.4	917.3	1.52	-0.16	6.02	
3,920.0	13.70	251.60	3,792.3	-292.4	-902.5	948.7	1.05	-0.62	-3.49	
4,049.0	13.60	251.20	3,917.7	-302.1	-931.4	979.1	0.11	-0.08	-0.31	
4,177.0	13.90	251.00	4,042.0	-311.9	-960.2	1,009.6	0.24	0.23	-0.16	
4,306.0	13.60	247.90	4,167.3	-322.7	-988.9	1,040.2	0.62	-0.23	-2.40	
4,434.0	14.70	251.20	4,291.4	-333.6	-1,018.2	1,071.4	1.07	0.86	2.58	
4,563.0	13.40	251.00	4,416.5	-343.7	-1,047.8	1,102.7	1.01	-1.01	-0.16	
4,692.0	12.80	250.30	4,542.2	-353.4	-1,075.4	1,132.0	0.48	-0.47	-0.54	
4,820.0	11.20	254.20	4,667.4	-361.6	-1,100.7	1,158.6	1.40	-1.25	3.05	
4,949.0	10.30	256.10	4,794.1	-367.8	-1,124.0	1,182.6	0.75	-0.70	1.47	
5,077.0	7.70	256.10	4,920.5	-372.6	-1,143.4	1,202.6	2.03	-2.03	0.00	
5,206.0	6.20	264.90	5,048.6	-375.3	-1,158.7	1,218.0	1.42	-1.16	6.82	
5,335.0	4.30	318.40	5,177.1	-372.3	-1,168.9	1,226.7	3.89	-1.47	41.47	
5,463.0	0.70	60.80	5,305.0	-368.3	-1,171.4	1,227.9	3.52	-2.81	80.00	
5,635.0	0.30	119.90	5,477.0	-368.0	-1,170.1	1,226.6	0.35	-0.23	34.36	
5,806.0	0.40	169.80	5,648.0	-368.8	-1,169.6	1,226.4	0.18	0.06	29.18	
5,858.0	0.34	167.81	5,700.0	-369.1	-1,169.5	1,226.4	0.12	-0.12	-3.82	
TARGET BHL 50'FSL, 1300'FWL										
5,978.0	0.20	158.60	5,820.0	-369.7	-1,169.4	1,226.4	0.12	-0.12	-7.68	
6,149.0	0.10	80.70	5,991.0	-369.9	-1,169.1	1,226.2	0.12	-0.06	-45.56	
6,321.0	0.50	220.80	6,163.0	-370.5	-1,169.5	1,226.7	0.34	0.23	81.45	
6,492.0	1.10	229.40	6,334.0	-372.1	-1,171.2	1,228.9	0.36	0.35	5.03	
6,663.0	1.60	225.00	6,504.9	-374.9	-1,174.1	1,232.5	0.30	0.29	-2.57	
6,851.0	1.50	234.20	6,692.8	-378.2	-1,178.0	1,237.2	0.14	-0.05	4.89	
7,023.0	0.40	144.50	6,864.8	-380.0	-1,179.5	1,239.2	0.90	-0.64	-52.15	
7,195.0	0.40	102.70	7,036.8	-380.6	-1,178.5	1,238.5	0.17	0.00	-24.30	
7,364.3	0.39	354.07	7,206.1	-380.1	-1,178.0	1,237.8	0.38	0.00	-64.17	
TARGET CIRCLE 50'FSL & 1300'FWL										
7,367.0	0.40	353.20	7,208.8	-380.1	-1,178.0	1,237.8	0.38	0.31	-32.07	
7,539.0	1.00	336.10	7,380.8	-378.2	-1,178.7	1,237.9	0.37	0.35	-9.94	
7,711.0	1.50	324.20	7,552.8	-375.0	-1,180.6	1,238.7	0.33	0.29	-6.92	
7,883.0	0.30	92.00	7,724.8	-373.1	-1,181.5	1,239.0	0.99	-0.70	74.30	
8,055.0	0.60	160.60	7,896.7	-374.0	-1,180.7	1,238.5	0.33	0.17	39.88	
8,171.0	0.60	197.40	8,012.7	-375.2	-1,180.7	1,238.9	0.33	0.00	31.72	

Company:	EnCana Oil & Gas Weld County CO	Local Co-ordinate Reference:	Well McPeek 2-8-10
Project:	SEC.10-T2N-R66W	TVD Reference:	WELL @ 5001.0ft (Original Well Elev)
Site:	McPeek 2-8-10 Pad Sec.10-T2N-R66W	MD Reference:	WELL @ 5001.0ft (Original Well Elev)
Well:	McPeek 2-8-10	North Reference:	True
Wellbore:	Wellbore #1	Survey Calculation Method:	Minimum Curvature
Design:	Wellbore #1	Database:	Landmark

Survey										
Measured Depth (ft)	Inclination (°)	Azimuth (°)	Vertical Depth (ft)	+N/-S (ft)	+E/-W (ft)	Vertical Section (ft)	Dogleg Rate (°/100ft)	Build Rate (°/100ft)	Turn Rate (°/100ft)	
8,218.0	0.60	218.90	8,059.7	-375.6	-1,180.9	1,239.2	0.48	0.00	45.74	

Checked By: _____ Approved By: _____ Date: _____