

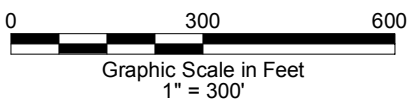
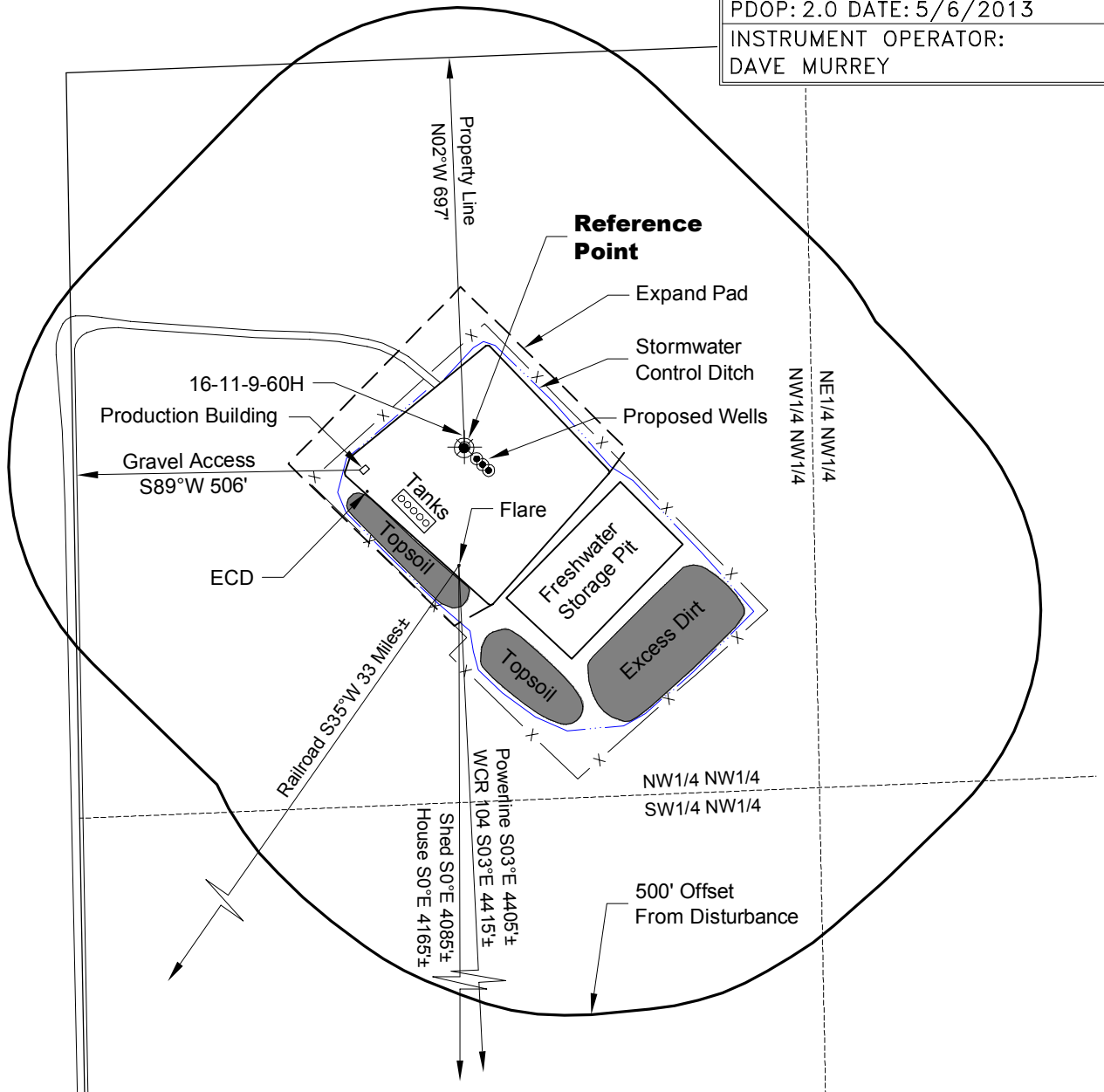
LOCATION DRAWING

PLANT COMMUNITY:
DISTURBED GRASSLAND

SURFACE USE:
RANGELAND

REFERENCE POINT

LATITUDE: 40.75503
LONGITUDE: -104.10475
FOOTAGE: 700 FNL 700 FWL
GROUND ELEVATION: 5011.5
PDOP: 2.0 DATE: 5/6/2013
INSTRUMENT OPERATOR:
DAVE MURREY



LAND SURVEYING AND MAPPING
LAFAYETTE - WINTER PARK
Ph 303 666 0379 Fx 303 665 6320

CARRIZO NIOBRARA LLC
STATE 16-11-9-60H PAD

NW1/4 NW1/4 SEC. 16 T9N R60W
6th PM WELD COUNTY COLORADO

11/12/13