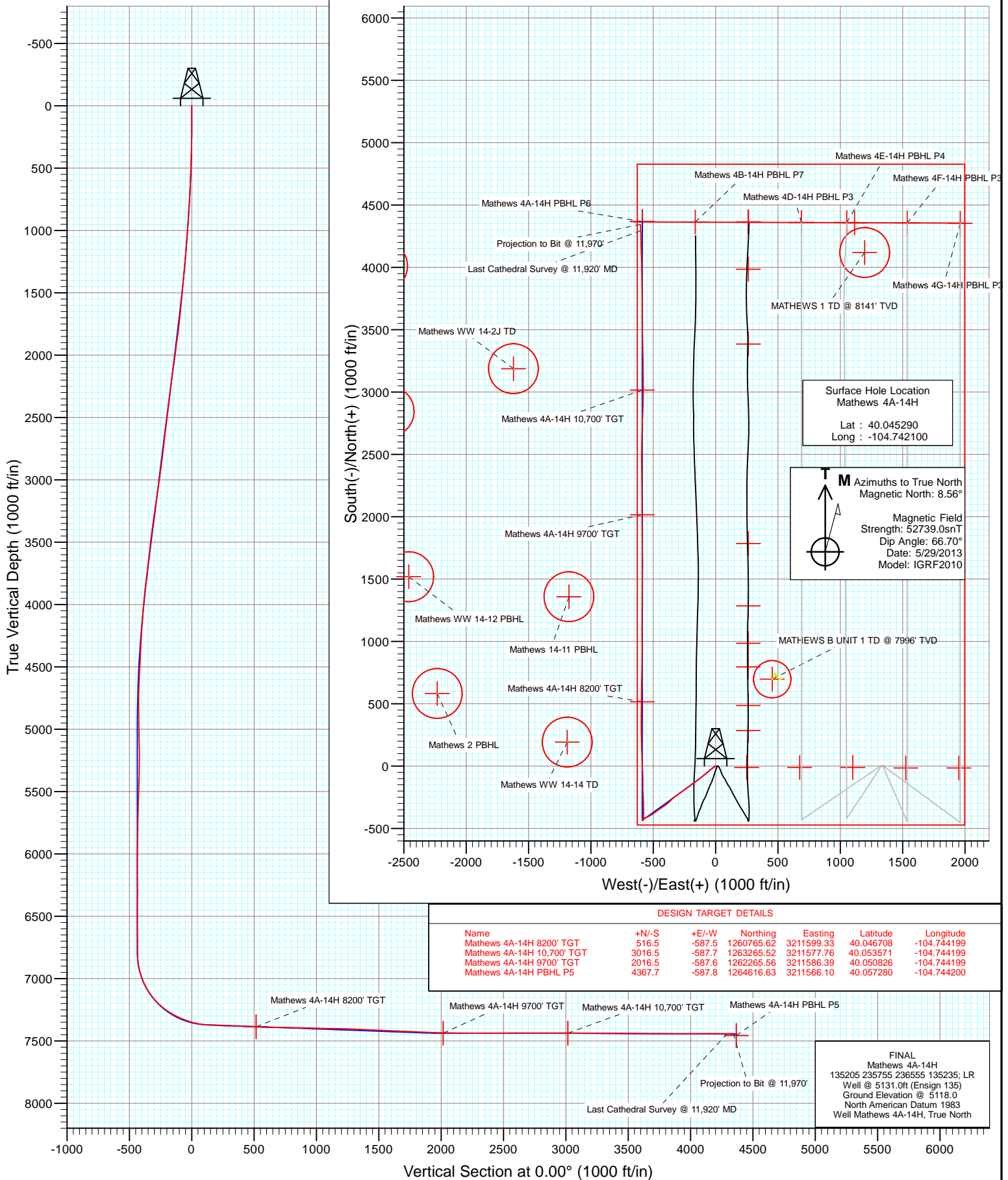


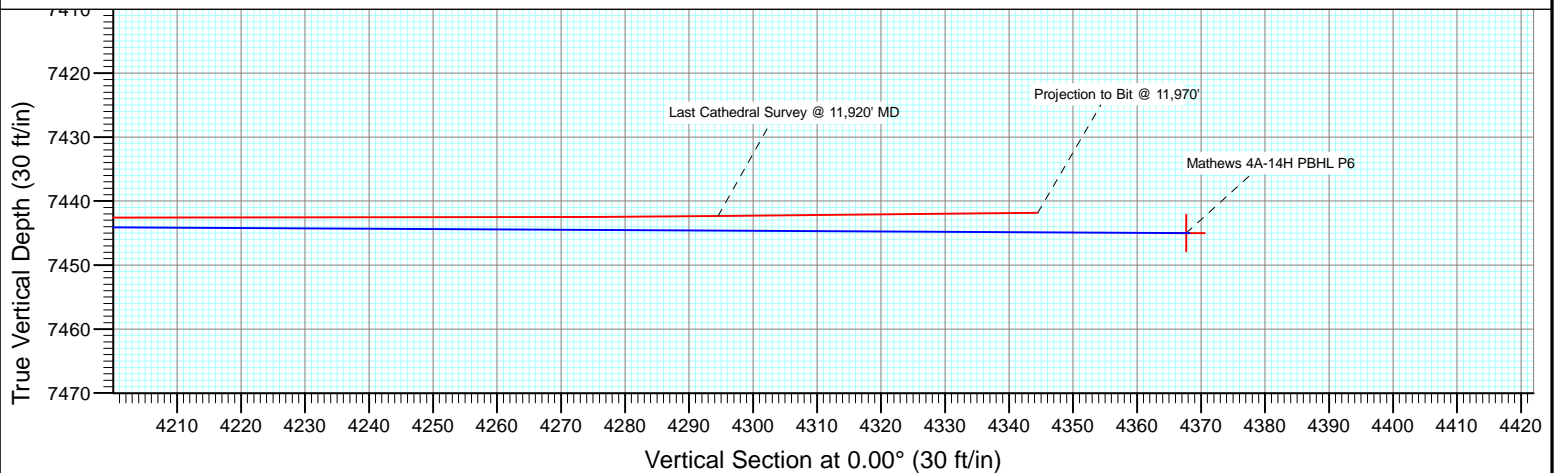
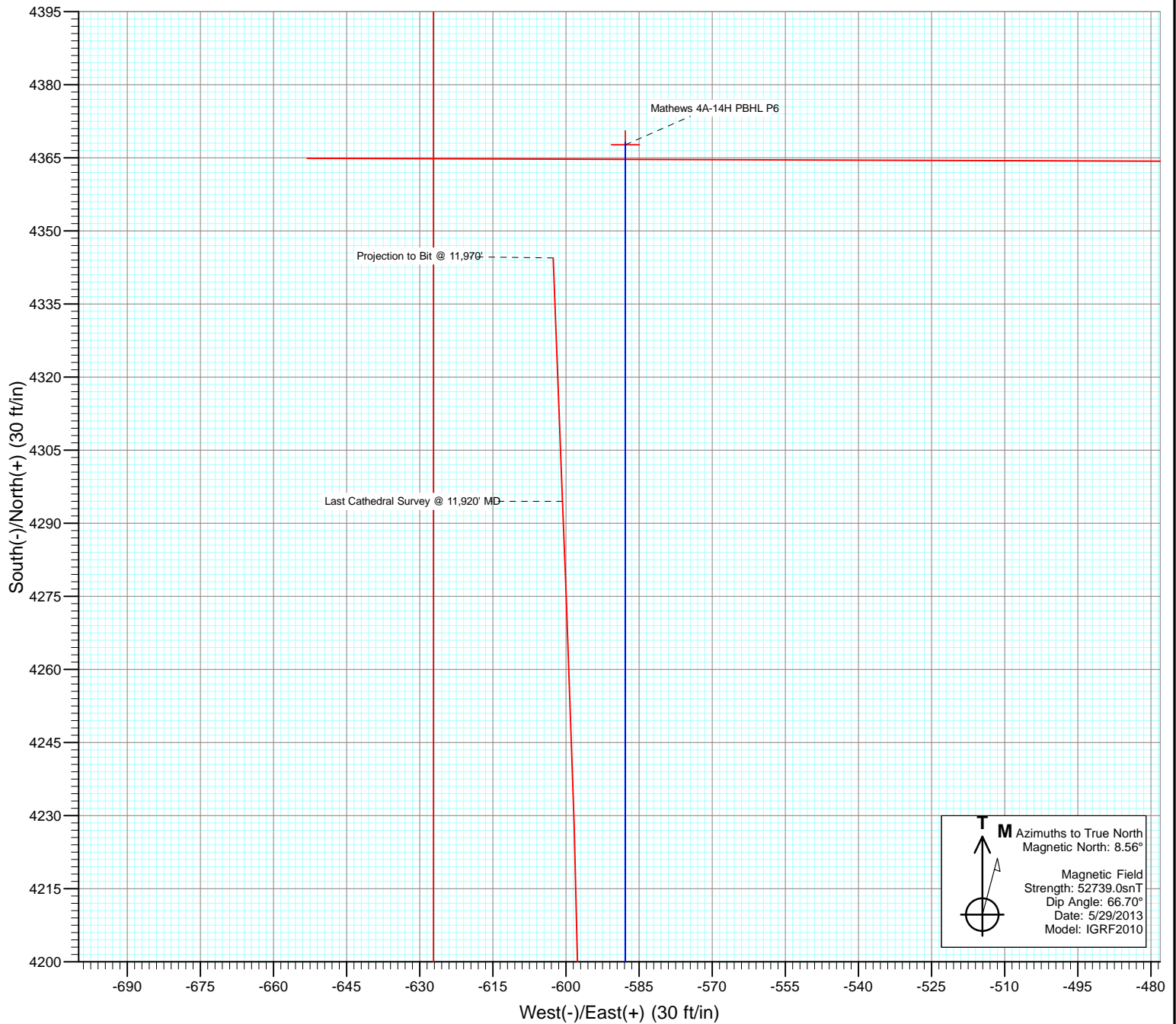


Project: DJ Wattenberg
Site: S14 T1N-R66W (Mathews)
Well: Mathews 4A-14H
Wellbore: HZ
Design: FINAL





Project: DJ Wattenberg
Site: S14 T1N-R66W (Mathews)
Well: Mathews 4A-14H
Wellbore: HZ
Design: FINAL



Cathedral Energy Services

Survey Report

Company:	EnCana Oil & Gas (USA) Inc	Local Co-ordinate Reference:	Well Mathews 4A-14H
Project:	DJ Wattenberg	TVD Reference:	Well @ 5131.0ft (Ensign 135)
Site:	S14 T1N-R66W (Mathews)	MD Reference:	Well @ 5131.0ft (Ensign 135)
Well:	Mathews 4A-14H	North Reference:	True
Wellbore:	HZ	Survey Calculation Method:	Minimum Curvature
Design:	FINAL	Database:	USA EDM 5000 Multi Users DB

Project	DJ Wattenberg		
Map System:	US State Plane 1983	System Datum:	Mean Sea Level
Geo Datum:	North American Datum 1983		
Map Zone:	Colorado Northern Zone		

Site		S14 T1N-R66W (Mathews)			
Site Position:		Northing:	1,260,084.79 ft	Latitude:	40.044810
From:	Lat/Long	Easting:	3,212,836.64 ft	Longitude:	-104.739800
Position Uncertainty:	0.0 ft	Slot Radius:	13.200 in	Grid Convergence:	0.49 °

Well	Mathews 4A-14H					
Well Position	+N/-S	0.0 ft	Northing:	1,260,254.11 ft	Latitude:	40.045290
	+E/-W	0.0 ft	Easting:	3,212,191.24 ft	Longitude:	-104.742100
Position Uncertainty		0.0 ft	Wellhead Elevation:	ft	Ground Level:	5,118.0 ft

Wellbore	HZ				
Magnetics	Model Name	Sample Date	Declination (°)	Dip Angle (°)	Field Strength (nT)
	IGRF2010	5/29/2013	8.56	66.70	52,739

Design	FINAL				
Audit Notes:					
Version:	1.0	Phase:	ACTUAL	Tie On Depth:	0.0
Vertical Section:	Depth From (TVD)	+N/-S	+E/-W	Direction	
	(ft)	(ft)	(ft)	(°)	
	0.0	0.0	0.0	0.00	

Survey Program	Date	6/6/2013			
From (ft)	To (ft)	Survey (Wellbore)	Tool Name	Description	
195.0	11,970.0	Survey #1 (HZ)	MWD	Geolink MWD	

Survey										
Measured Depth (ft)	Inclination (°)	Azimuth (°)	Vertical Depth (ft)	+N/-S (ft)	+E/-W (ft)	Vertical Section (ft)	Dogleg Rate (°/100ft)	Build Rate (°/100ft)	Formations / Comments	
0.0	0.00	0.00	0.0	0.0	0.0	0.0	0.00	0.00		
195.0	0.30	284.50	195.0	0.1	-0.5	0.1	0.15	0.15		
287.0	1.30	244.70	287.0	-0.3	-1.7	-0.3	1.18	1.09		
379.0	2.60	235.60	378.9	-1.9	-4.3	-1.9	1.45	1.41		
471.0	3.30	238.10	470.8	-4.5	-8.3	-4.5	0.77	0.76		
563.0	4.10	232.90	562.6	-7.8	-13.2	-7.8	0.94	0.87		
654.0	5.20	229.90	653.3	-12.5	-18.9	-12.5	1.24	1.21		
746.0	4.90	232.40	745.0	-17.5	-25.2	-17.5	0.40	-0.33		
838.0	5.10	231.50	836.6	-22.5	-31.5	-22.5	0.23	0.22		
930.0	5.70	232.50	928.2	-27.8	-38.4	-27.8	0.66	0.65		
1,022.0	6.90	233.50	1,019.6	-33.9	-46.4	-33.9	1.31	1.30		
1,114.0	7.60	230.00	1,110.9	-41.1	-55.5	-41.1	0.90	0.76		
1,205.0	8.40	231.30	1,201.0	-49.1	-65.3	-49.1	0.90	0.88		

Cathedral Energy Services

Survey Report

Company:	EnCana Oil & Gas (USA) Inc	Local Co-ordinate Reference:	Well Mathews 4A-14H
Project:	DJ Wattenberg	TVD Reference:	Well @ 5131.0ft (Ensign 135)
Site:	S14 T1N-R66W (Mathews)	MD Reference:	Well @ 5131.0ft (Ensign 135)
Well:	Mathews 4A-14H	North Reference:	True
Wellbore:	HZ	Survey Calculation Method:	Minimum Curvature
Design:	FINAL	Database:	USA EDM 5000 Multi Users DB

Survey

Measured Depth (ft)	Inclination (°)	Azimuth (°)	Vertical Depth (ft)	+N/-S (ft)	+E/-W (ft)	Vertical Section (ft)	Dogleg Rate (°/100ft)	Build Rate (°/100ft)	Formations / Comments
1,269.0	7.90	228.90	1,264.4	-54.9	-72.3	-54.9	0.94	-0.78	
1,372.0	7.40	226.40	1,366.5	-64.1	-82.4	-64.1	0.58	-0.49	
1,464.0	8.00	234.00	1,457.6	-72.0	-91.9	-72.0	1.28	0.65	
1,556.0	8.50	232.90	1,548.7	-79.9	-102.5	-79.9	0.57	0.54	
1,648.0	9.10	232.00	1,639.6	-88.4	-113.7	-88.4	0.67	0.65	
1,739.0	11.00	233.80	1,729.2	-98.0	-126.3	-98.0	2.12	2.09	
1,831.0	12.00	231.30	1,819.3	-109.2	-140.9	-109.2	1.21	1.09	
1,923.0	12.30	232.20	1,909.3	-121.2	-156.1	-121.2	0.39	0.33	
2,018.0	12.40	233.80	2,002.1	-133.4	-172.3	-133.4	0.38	0.11	
2,113.0	12.60	232.50	2,094.8	-145.7	-188.8	-145.7	0.36	0.21	
2,207.0	13.30	235.00	2,186.4	-158.2	-205.8	-158.2	0.95	0.74	
2,302.0	11.50	232.30	2,279.2	-170.2	-222.2	-170.2	1.99	-1.89	
2,397.0	11.70	232.30	2,372.3	-181.9	-237.3	-181.9	0.21	0.21	
2,492.0	11.60	236.80	2,465.3	-193.0	-252.9	-193.0	0.96	-0.11	
2,586.0	12.30	234.90	2,557.3	-203.9	-269.0	-203.9	0.85	0.74	
2,681.0	11.60	235.50	2,650.2	-215.2	-285.2	-215.2	0.75	-0.74	
2,775.0	11.60	235.10	2,742.3	-225.9	-300.7	-225.9	0.09	0.00	
2,870.0	12.50	234.80	2,835.2	-237.3	-317.0	-237.3	0.95	0.95	
2,964.0	11.80	230.20	2,927.1	-249.3	-332.7	-249.3	1.27	-0.74	
3,059.0	11.40	224.90	3,020.2	-262.2	-346.8	-262.2	1.20	-0.42	
3,154.0	11.40	222.00	3,113.3	-275.8	-359.7	-275.8	0.60	0.00	
3,248.0	12.40	228.20	3,205.3	-289.5	-373.4	-289.5	1.73	1.06	
3,343.0	12.60	231.30	3,298.0	-302.7	-389.1	-302.7	0.74	0.21	
3,437.0	12.20	233.50	3,389.8	-315.1	-405.1	-315.1	0.66	-0.43	
3,532.0	12.00	235.00	3,482.7	-326.7	-421.2	-326.7	0.39	-0.21	
3,627.0	11.80	235.10	3,575.7	-337.9	-437.3	-337.9	0.21	-0.21	
3,721.0	12.20	241.50	3,667.6	-348.2	-453.9	-348.2	1.48	0.43	
3,816.0	12.70	234.10	3,760.4	-359.1	-471.2	-359.1	1.76	0.53	
3,911.0	9.30	230.90	3,853.7	-370.0	-485.6	-370.0	3.63	-3.58	
4,005.0	9.60	233.70	3,946.4	-379.5	-497.8	-379.5	0.58	0.32	
4,100.0	9.50	237.70	4,040.1	-388.4	-510.8	-388.4	0.71	-0.11	
4,195.0	8.20	243.40	4,133.9	-395.6	-523.5	-395.6	1.65	-1.37	
4,290.0	7.30	239.10	4,228.1	-401.7	-534.8	-401.7	1.13	-0.95	
4,385.0	7.80	247.70	4,322.2	-407.3	-545.9	-407.3	1.30	0.53	
4,480.0	5.80	245.30	4,416.6	-411.7	-556.2	-411.7	2.13	-2.11	
4,574.0	7.30	243.60	4,510.0	-416.3	-565.9	-416.3	1.61	1.60	
4,669.0	4.90	239.20	4,604.4	-421.1	-574.8	-421.1	2.57	-2.53	
4,764.0	3.30	246.10	4,699.2	-424.3	-580.8	-424.3	1.76	-1.68	
4,859.0	1.80	276.50	4,794.1	-425.2	-584.7	-425.2	2.07	-1.58	
4,953.0	0.90	286.30	4,888.0	-424.9	-586.9	-424.9	0.98	-0.96	
5,048.0	1.60	4.10	4,983.0	-423.3	-587.5	-423.3	1.75	0.74	
5,143.0	1.30	31.20	5,078.0	-421.1	-586.9	-421.1	0.78	-0.32	
5,238.0	0.50	54.70	5,173.0	-419.9	-586.0	-419.9	0.91	-0.84	
5,333.0	0.60	80.60	5,268.0	-419.6	-585.2	-419.6	0.28	0.11	
5,427.0	1.70	183.90	5,362.0	-420.9	-584.8	-420.9	2.05	1.17	
5,522.0	1.60	216.40	5,456.9	-423.4	-585.7	-423.4	0.98	-0.11	
5,617.0	2.30	191.60	5,551.9	-426.3	-586.8	-426.3	1.14	0.74	
5,711.0	2.00	202.50	5,645.8	-429.7	-587.8	-429.7	0.54	-0.32	
5,806.0	0.70	150.30	5,740.8	-431.7	-588.2	-431.7	1.75	-1.37	
5,901.0	0.90	153.90	5,835.8	-432.9	-587.6	-432.9	0.22	0.21	
5,995.0	0.80	144.40	5,929.8	-434.1	-586.9	-434.1	0.18	-0.11	
6,090.0	0.90	158.50	6,024.8	-435.3	-586.2	-435.3	0.24	0.11	
6,185.0	1.10	88.10	6,119.7	-436.0	-585.0	-436.0	1.23	0.21	

Cathedral Energy Services

Survey Report

Company:	EnCana Oil & Gas (USA) Inc	Local Co-ordinate Reference:	Well Mathews 4A-14H
Project:	DJ Wattenberg	TVD Reference:	Well @ 5131.0ft (Ensign 135)
Site:	S14 T1N-R66W (Mathews)	MD Reference:	Well @ 5131.0ft (Ensign 135)
Well:	Mathews 4A-14H	North Reference:	True
Wellbore:	HZ	Survey Calculation Method:	Minimum Curvature
Design:	FINAL	Database:	USA EDM 5000 Multi Users DB

Survey									
Measured Depth (ft)	Inclination (°)	Azimuth (°)	Vertical Depth (ft)	+N/-S (ft)	+E/-W (ft)	Vertical Section (ft)	Dogleg Rate (°/100ft)	Build Rate (°/100ft)	Formations / Comments
6,280.0	0.80	37.10	6,214.7	-435.4	-583.7	-435.4	0.91	-0.32	
6,375.0	0.10	292.60	6,309.7	-434.9	-583.4	-434.9	0.87	-0.74	
6,470.0	0.40	220.50	6,404.7	-435.1	-583.7	-435.1	0.40	0.32	
6,564.0	0.40	88.20	6,498.7	-435.3	-583.6	-435.3	0.78	0.00	
6,659.0	0.80	75.40	6,593.7	-435.1	-582.6	-435.1	0.44	0.42	
6,754.0	0.70	64.60	6,688.7	-434.7	-581.4	-434.7	0.18	-0.11	
6,849.0	0.60	53.60	6,783.7	-434.2	-580.5	-434.2	0.17	-0.11	
6,880.0	0.80	41.00	6,814.7	-433.9	-580.2	-433.9	0.81	0.65	
6,912.0	3.10	11.80	6,846.7	-432.9	-579.9	-432.9	7.60	7.19	
6,944.0	6.80	9.60	6,878.6	-430.2	-579.4	-430.2	11.58	11.56	
6,975.0	11.50	10.20	6,909.2	-425.3	-578.6	-425.3	15.16	15.16	
7,007.0	15.40	8.20	6,940.3	-418.0	-577.4	-418.0	12.27	12.19	
7,038.0	18.60	4.40	6,969.9	-409.0	-576.4	-409.0	10.92	10.32	
7,070.0	21.10	0.80	7,000.0	-398.1	-575.9	-398.1	8.69	7.81	
7,101.0	23.90	359.20	7,028.7	-386.3	-575.9	-386.3	9.24	9.03	
7,133.0	27.10	359.30	7,057.5	-372.5	-576.1	-372.5	10.00	10.00	
7,165.0	30.50	359.10	7,085.6	-357.1	-576.3	-357.1	10.63	10.62	
7,196.0	33.30	358.80	7,111.9	-340.7	-576.6	-340.7	9.05	9.03	
7,228.0	36.40	357.90	7,138.1	-322.4	-577.2	-322.4	9.82	9.69	
7,259.0	39.70	357.40	7,162.6	-303.4	-578.0	-303.4	10.69	10.65	
7,291.0	43.60	357.50	7,186.5	-282.1	-578.9	-282.1	12.19	12.19	
7,323.0	47.30	357.90	7,208.9	-259.3	-579.8	-259.3	11.60	11.56	
7,354.0	50.60	357.30	7,229.3	-236.0	-580.8	-236.0	10.74	10.65	
7,386.0	53.90	358.10	7,248.8	-210.7	-581.8	-210.7	10.50	10.31	
7,417.0	56.60	359.50	7,266.5	-185.2	-582.3	-185.2	9.47	8.71	
7,449.0	59.40	0.10	7,283.5	-158.1	-582.4	-158.1	8.89	8.75	
7,481.0	62.80	359.60	7,298.9	-130.1	-582.5	-130.1	10.71	10.62	
7,512.0	65.70	359.30	7,312.4	-102.2	-582.8	-102.2	9.40	9.35	
7,544.0	68.10	358.80	7,325.0	-72.7	-583.3	-72.7	7.64	7.50	
7,575.0	69.80	358.30	7,336.1	-43.8	-584.0	-43.8	5.69	5.48	
7,607.0	72.40	357.80	7,346.5	-13.6	-585.0	-13.6	8.26	8.12	
7,639.0	75.50	357.30	7,355.3	17.1	-586.4	17.1	9.80	9.69	
7,670.0	78.70	356.40	7,362.2	47.3	-588.0	47.3	10.70	10.32	
7,693.0	81.00	356.40	7,366.3	69.9	-589.4	69.9	10.00	10.00	
7,762.0	86.90	358.20	7,373.5	138.4	-592.7	138.4	8.94	8.55	
7,825.0	88.00	358.50	7,376.3	201.3	-594.5	201.3	1.81	1.75	
7,888.0	87.20	359.80	7,379.0	264.3	-595.4	264.3	2.42	-1.27	
7,952.0	87.80	0.40	7,381.8	328.2	-595.3	328.2	1.33	0.94	
8,015.0	88.40	0.70	7,383.9	391.2	-594.7	391.2	1.06	0.95	
8,110.0	88.00	359.90	7,386.8	486.1	-594.2	486.1	0.94	-0.42	
8,140.4	87.90	0.09	7,387.9	516.5	-594.2	516.5	0.71	-0.32	Mathews 4A-14H 8200' TGT
8,204.0	87.70	0.50	7,390.4	580.0	-593.9	580.0	0.71	-0.32	
8,299.0	89.30	1.20	7,392.9	675.0	-592.5	675.0	1.84	1.68	
8,394.0	89.60	1.30	7,393.8	770.0	-590.4	770.0	0.33	0.32	
8,489.0	88.90	0.60	7,395.0	865.0	-588.8	865.0	1.04	-0.74	
8,583.0	88.50	0.00	7,397.2	958.9	-588.3	958.9	0.77	-0.43	
8,678.0	88.00	359.30	7,400.1	1,053.9	-588.9	1,053.9	0.91	-0.53	
8,773.0	88.80	0.00	7,402.7	1,148.8	-589.5	1,148.8	1.12	0.84	
8,867.0	89.00	0.00	7,404.5	1,242.8	-589.5	1,242.8	0.21	0.21	
8,962.0	87.90	1.50	7,407.1	1,337.8	-588.2	1,337.8	1.96	-1.16	
9,057.0	87.20	0.30	7,411.1	1,432.7	-586.7	1,432.7	1.46	-0.74	
9,152.0	86.90	0.30	7,416.0	1,527.5	-586.2	1,527.5	0.32	-0.32	
9,246.0	87.40	0.00	7,420.7	1,621.4	-586.0	1,621.4	0.62	0.53	

Cathedral Energy Services

Survey Report

Company:	EnCana Oil & Gas (USA) Inc	Local Co-ordinate Reference:	Well Mathews 4A-14H
Project:	DJ Wattenberg	TVD Reference:	Well @ 5131.0ft (Ensign 135)
Site:	S14 T1N-R66W (Mathews)	MD Reference:	Well @ 5131.0ft (Ensign 135)
Well:	Mathews 4A-14H	North Reference:	True
Wellbore:	HZ	Survey Calculation Method:	Minimum Curvature
Design:	FINAL	Database:	USA EDM 5000 Multi Users DB

Survey									
Measured Depth (ft)	Inclination (°)	Azimuth (°)	Vertical Depth (ft)	+N/-S (ft)	+E/-W (ft)	Vertical Section (ft)	Dogleg Rate (°/100ft)	Build Rate (°/100ft)	Formations / Comments
9,341.0	87.60	359.60	7,424.8	1,716.3	-586.3	1,716.3	0.47	0.21	
9,436.0	87.60	359.60	7,428.8	1,811.3	-587.0	1,811.3	0.00	0.00	
9,531.0	87.70	358.90	7,432.7	1,906.2	-588.2	1,906.2	0.74	0.11	
9,626.0	88.80	359.40	7,435.6	2,001.1	-589.6	2,001.1	1.27	1.16	
9,641.5	88.77	359.55	7,435.9	2,016.6	-589.8	2,016.6	0.98	-0.21	Mathews 4A-14H 9700' TGT
9,720.0	88.60	0.30	7,437.8	2,095.1	-589.9	2,095.1	0.98	-0.21	
9,815.0	90.40	359.70	7,438.6	2,190.1	-589.9	2,190.1	2.00	1.89	
9,910.0	89.20	359.70	7,438.9	2,285.1	-590.4	2,285.1	1.26	-1.26	
10,005.0	90.20	359.10	7,439.4	2,380.1	-591.4	2,380.1	1.23	1.05	
10,099.0	90.20	359.70	7,439.1	2,474.1	-592.4	2,474.1	0.64	0.00	
10,194.0	91.50	1.30	7,437.7	2,569.0	-591.5	2,569.0	2.17	1.37	
10,289.0	89.70	1.00	7,436.7	2,664.0	-589.6	2,664.0	1.92	-1.89	
10,384.0	89.10	2.10	7,437.7	2,759.0	-587.1	2,759.0	1.32	-0.63	
10,479.0	89.30	2.80	7,439.0	2,853.9	-583.0	2,853.9	0.77	0.21	
10,574.0	89.80	0.50	7,439.7	2,948.8	-580.3	2,948.8	2.48	0.53	
10,641.7	90.30	0.50	7,439.7	3,016.5	-579.7	3,016.5	0.74	0.74	Mathews 4A-14H 10,700' TGT
10,668.0	90.50	0.50	7,439.5	3,042.8	-579.4	3,042.8	0.74	0.74	
10,763.0	89.10	359.30	7,439.8	3,137.8	-579.6	3,137.8	1.94	-1.47	
10,858.0	90.20	358.60	7,440.4	3,232.8	-581.4	3,232.8	1.37	1.16	
10,953.0	89.30	358.90	7,440.8	3,327.8	-583.4	3,327.8	1.00	-0.95	
11,048.0	90.00	358.60	7,441.4	3,422.7	-585.5	3,422.7	0.80	0.74	
11,142.0	88.70	359.00	7,442.5	3,516.7	-587.5	3,516.7	1.45	-1.38	
11,237.0	89.80	359.80	7,443.7	3,611.7	-588.5	3,611.7	1.43	1.16	
11,332.0	89.80	0.20	7,444.0	3,706.7	-588.5	3,706.7	0.42	0.00	
11,427.0	90.20	359.90	7,444.0	3,801.7	-588.4	3,801.7	0.53	0.42	
11,522.0	90.60	359.20	7,443.4	3,896.7	-589.1	3,896.7	0.85	0.42	
11,616.0	89.80	357.70	7,443.1	3,990.7	-591.7	3,990.7	1.81	-0.85	
11,711.0	90.50	358.30	7,442.8	4,085.6	-595.0	4,085.6	0.97	0.74	
11,806.0	89.80	359.00	7,442.6	4,180.6	-597.2	4,180.6	1.04	-0.74	
11,901.0	90.30	357.70	7,442.5	4,275.5	-600.0	4,275.5	1.47	0.53	
11,920.0	90.60	357.80	7,442.3	4,294.5	-600.7	4,294.5	1.66	1.58	Last Cathedral Survey @ 11,920' MD
11,970.0	90.60	357.80	7,441.8	4,344.5	-602.6	4,344.5	0.00	0.00	Projection to Bit @ 11,970' - Mathews 4A-14H PI

Cathedral Energy Services

Survey Report

Company:	EnCana Oil & Gas (USA) Inc	Local Co-ordinate Reference:	Well Mathews 4A-14H
Project:	DJ Wattenberg	TVD Reference:	Well @ 5131.0ft (Ensign 135)
Site:	S14 T1N-R66W (Mathews)	MD Reference:	Well @ 5131.0ft (Ensign 135)
Well:	Mathews 4A-14H	North Reference:	True
Wellbore:	HZ	Survey Calculation Method:	Minimum Curvature
Design:	FINAL	Database:	USA EDM 5000 Multi Users DB

Targets									
Target Name	Dip Angle	Dip Dir.	TVD	+N/-S	+E/-W	Northing	Easting	Latitude	Longitude
- hit/miss target	(°)	(°)	(ft)	(ft)	(ft)	(ft)	(ft)		
- Shape									
Mathews 4A-14H PBHL	0.00	0.00	7,445.0	4,367.7	-587.8	1,264,616.63	3,211,566.10	40.057280	-104.744200
- actual wellpath misses target center by 27.7ft at 11970.0ft MD (7441.8 TVD, 4344.5 N, -602.6 E)									
- Point									
Mathews 4A-14H 8200'	0.00	0.00	7,386.0	516.5	-587.5	1,260,765.62	3,211,599.33	40.046708	-104.744199
- actual wellpath misses target center by 6.9ft at 8140.4ft MD (7387.9 TVD, 516.5 N, -594.2 E)									
- Point									
Mathews 4A-14H PBHL	0.00	0.00	7,457.0	4,367.7	-587.8	1,264,616.63	3,211,566.10	40.057280	-104.744200
- actual wellpath misses target center by 31.5ft at 11970.0ft MD (7441.8 TVD, 4344.5 N, -602.6 E)									
- Point									
Mathews 4A-14H PBHL	0.00	0.00	7,425.0	4,367.7	-587.8	1,264,616.63	3,211,566.10	40.057280	-104.744200
- actual wellpath misses target center by 32.3ft at 11970.0ft MD (7441.8 TVD, 4344.5 N, -602.6 E)									
- Point									
Mathews 4A-14H 10,700'	0.00	0.00	7,438.0	3,016.5	-587.7	1,263,265.52	3,211,577.76	40.053571	-104.744199
- actual wellpath misses target center by 8.2ft at 10641.7ft MD (7439.7 TVD, 3016.5 N, -579.7 E)									
- Point									
Mathews 4A-14H 9700'	0.00	0.00	7,438.0	2,016.5	-587.6	1,262,265.56	3,211,586.39	40.050826	-104.744199
- actual wellpath misses target center by 3.0ft at 9641.5ft MD (7435.9 TVD, 2016.6 N, -589.8 E)									
- Point									

Design Annotations				
Measured Depth	Vertical Depth	Local Coordinates		Comment
(ft)	(ft)	+N/-S (ft)	+E/-W (ft)	
11,920.0	7,442.3	4,294.5	-600.7	Last Cathedral Survey @ 11,920' MD
11,970.0	7,441.8	4,344.5	-602.6	Projection to Bit @ 11,970'

Checked By: _____ Approved By: _____ Date: _____