

BONANZA CREEK ENERGY OPERATING

Well Name: **State North Platte F-J-36HNB**

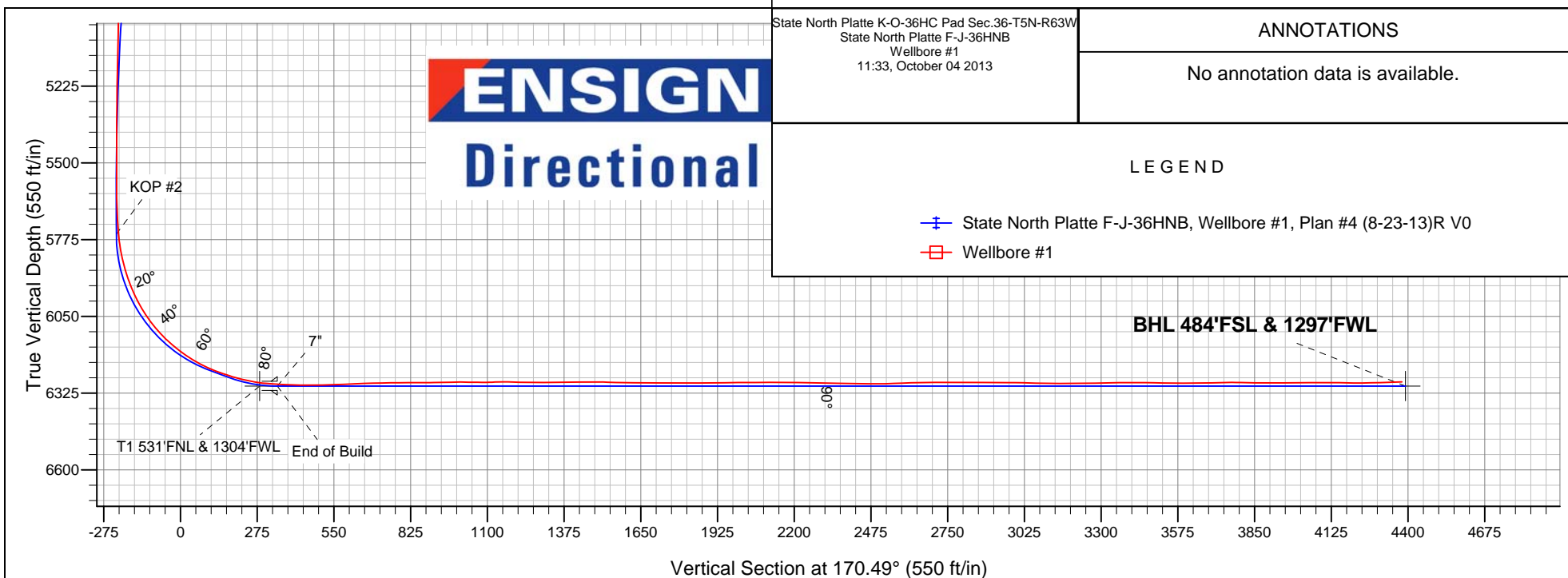
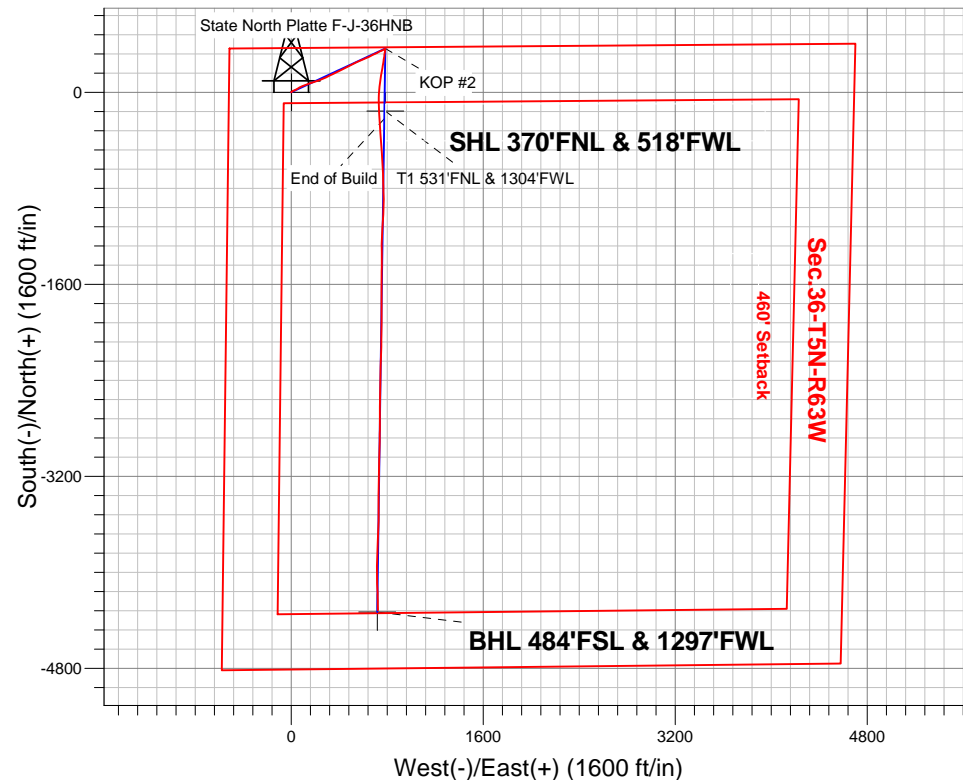
Surface Location: State North Platte K-O-36HC Pad Sec.36-T5N-R63W
North American Datum 1983 , US State Plane 1983 , Colorado Northern Zone
Ground Elevation: 4543.0

| +N/-S | +E/-W | Northing | Easting | Latitude | Longitude | Slot |
|-------|-------|------------|------------|-----------|-------------|------|
| 0.0 | 0.0 | 1376707.75 | 3308731.35 | 40.362170 | -104.392080 | |

Ensign 128 RKB - 15' WELL @ 4558.0ft (Ensign 128 RKB - 15')

FINAL SURVEY

Projected Bottom Hole Location
10821' MD 6285' TVD 4318' S & 723' E of SHL
92.1 degree Incl @ 178.5 degree AZM



State North Platte K-O-36HC Pad Sec.36-T5N-R63W
State North Platte F-J-36HNB
Wellbore #1
11:33, October 04 2013

ANNOTATIONS

No annotation data is available.

LEGEND

- State North Platte F-J-36HNB, Wellbore #1, Plan #4 (8-23-13)R V0
- Wellbore #1



BONANZA CREEK ENERGY OPERATING

SEC.36-T5N-R63W

State North Platte K-O-36HC Pad Sec.36-T5N-R63W

State North Platte F-J-36HNB

Wellbore #1

Design: Wellbore #1

Standard Survey Report

04 October, 2013

| | | | |
|------------------|--|-------------------------------------|--|
| Company: | BONANZA CREEK ENERGY OPERATING | Local Co-ordinate Reference: | Well State North Platte F-J-36HNB |
| Project: | SEC.36-T5N-R63W | TVD Reference: | WELL @ 4558.0ft (Ensign 128 RKB - 15') |
| Site: | State North Platte K-O-36HC Pad Sec.36-T5N-R63W | MD Reference: | WELL @ 4558.0ft (Ensign 128 RKB - 15') |
| Well: | State North Platte F-J-36HNB | North Reference: | True |
| Wellbore: | Wellbore #1 | Survey Calculation Method: | Minimum Curvature |
| Design: | Wellbore #1 | Database: | Landmark |

| Survey | | | | | | | | | |
|---------------------|-----------------|-------------|---------------------|------------|------------|-----------------------|-----------------------|----------------------|---------------------|
| Measured Depth (ft) | Inclination (°) | Azimuth (°) | Vertical Depth (ft) | +N/-S (ft) | +E/-W (ft) | Vertical Section (ft) | Dogleg Rate (°/100ft) | Build Rate (°/100ft) | Turn Rate (°/100ft) |
| 1,136.0 | 3.70 | 60.20 | 1,135.8 | 8.6 | 10.9 | -6.7 | 1.89 | 1.88 | 5.47 |
| 1,259.0 | 5.70 | 65.00 | 1,258.4 | 13.2 | 19.9 | -9.7 | 1.66 | 1.63 | 3.90 |
| 1,382.0 | 7.60 | 66.60 | 1,380.6 | 19.0 | 32.9 | -13.3 | 1.55 | 1.54 | 1.30 |
| 1,504.0 | 8.20 | 58.00 | 1,501.4 | 26.8 | 47.7 | -18.5 | 1.09 | 0.49 | -7.05 |
| 1,627.0 | 8.30 | 59.30 | 1,623.1 | 36.0 | 62.8 | -25.1 | 0.17 | 0.08 | 1.06 |
| 1,751.0 | 11.20 | 66.60 | 1,745.3 | 45.3 | 81.5 | -31.2 | 2.54 | 2.34 | 5.89 |
| 1,873.0 | 12.50 | 65.00 | 1,864.7 | 55.6 | 104.4 | -37.6 | 1.10 | 1.07 | -1.31 |
| 1,995.0 | 12.40 | 73.40 | 1,983.9 | 64.9 | 128.9 | -42.7 | 1.49 | -0.08 | 6.89 |
| 2,118.0 | 11.60 | 71.80 | 2,104.2 | 72.6 | 153.3 | -46.2 | 0.70 | -0.65 | -1.30 |
| 2,241.0 | 13.50 | 71.80 | 2,224.2 | 80.9 | 178.7 | -50.3 | 1.54 | 1.54 | 0.00 |
| 2,364.0 | 12.70 | 72.00 | 2,344.0 | 89.6 | 205.2 | -54.5 | 0.65 | -0.65 | 0.16 |
| 2,486.0 | 12.80 | 70.80 | 2,463.0 | 98.2 | 230.7 | -58.7 | 0.23 | 0.08 | -0.98 |
| 2,609.0 | 16.70 | 64.40 | 2,582.0 | 110.3 | 259.5 | -65.9 | 3.43 | 3.17 | -5.20 |
| 2,736.0 | 15.60 | 63.00 | 2,703.9 | 125.9 | 291.2 | -76.1 | 0.92 | -0.87 | -1.10 |
| 2,862.0 | 13.70 | 68.10 | 2,825.8 | 139.2 | 320.1 | -84.4 | 1.82 | -1.51 | 4.05 |
| 2,988.0 | 13.20 | 63.40 | 2,948.4 | 151.2 | 346.8 | -91.8 | 0.95 | -0.40 | -3.73 |
| 3,114.0 | 11.00 | 66.40 | 3,071.6 | 162.5 | 370.7 | -99.0 | 1.82 | -1.75 | 2.38 |
| 3,241.0 | 10.60 | 60.60 | 3,196.3 | 173.0 | 392.0 | -105.9 | 0.91 | -0.31 | -4.57 |
| 3,367.0 | 12.30 | 63.20 | 3,319.8 | 184.8 | 414.1 | -113.8 | 1.41 | 1.35 | 2.06 |
| 3,493.0 | 15.70 | 64.30 | 3,442.1 | 198.2 | 441.4 | -122.6 | 2.71 | 2.70 | 0.87 |
| 3,651.0 | 19.30 | 63.60 | 3,592.7 | 219.1 | 484.1 | -136.1 | 2.28 | 2.28 | -0.44 |
| 3,746.0 | 18.00 | 62.30 | 3,682.7 | 232.9 | 511.2 | -145.3 | 1.44 | -1.37 | -1.37 |
| 3,872.0 | 17.10 | 65.30 | 3,802.9 | 249.7 | 545.2 | -156.2 | 1.01 | -0.71 | 2.38 |
| 3,999.0 | 15.70 | 66.60 | 3,924.7 | 264.3 | 578.0 | -165.2 | 1.14 | -1.10 | 1.02 |
| 4,126.0 | 14.30 | 65.90 | 4,047.4 | 277.6 | 608.0 | -173.3 | 1.11 | -1.10 | -0.55 |
| 4,252.0 | 15.70 | 64.30 | 4,169.1 | 291.3 | 637.6 | -182.0 | 1.16 | 1.11 | -1.27 |
| 4,379.0 | 13.60 | 62.30 | 4,291.9 | 305.7 | 666.3 | -191.4 | 1.70 | -1.65 | -1.57 |
| 4,506.0 | 12.00 | 67.30 | 4,415.8 | 317.7 | 691.7 | -199.1 | 1.53 | -1.26 | 3.94 |
| 4,632.0 | 10.70 | 63.00 | 4,539.3 | 328.1 | 714.2 | -205.6 | 1.23 | -1.03 | -3.41 |
| 4,759.0 | 9.50 | 64.10 | 4,664.4 | 338.0 | 734.2 | -212.1 | 0.96 | -0.94 | 0.87 |
| 4,885.0 | 7.70 | 66.40 | 4,788.9 | 346.0 | 751.3 | -217.1 | 1.45 | -1.43 | 1.83 |
| 5,012.0 | 5.50 | 63.60 | 4,915.1 | 352.1 | 764.5 | -220.9 | 1.75 | -1.73 | -2.20 |
| 5,138.0 | 3.30 | 66.90 | 5,040.7 | 356.2 | 773.3 | -223.5 | 1.76 | -1.75 | 2.62 |
| 5,264.0 | 2.80 | 54.20 | 5,166.5 | 359.4 | 779.1 | -225.8 | 0.66 | -0.40 | -10.08 |
| 5,390.0 | 1.60 | 53.70 | 5,292.4 | 362.2 | 783.0 | -227.9 | 0.95 | -0.95 | -0.40 |
| 5,517.0 | 0.40 | 276.10 | 5,419.4 | 363.3 | 784.0 | -228.8 | 1.51 | -0.94 | -108.35 |
| 5,644.0 | 0.20 | 301.20 | 5,546.4 | 363.5 | 783.4 | -229.1 | 0.18 | -0.16 | 19.76 |
| 5,803.0 | 2.60 | 181.20 | 5,705.4 | 360.0 | 783.0 | -225.7 | 1.70 | 1.51 | -75.47 |
| 5,836.0 | 4.60 | 185.70 | 5,738.3 | 358.0 | 782.9 | -223.7 | 6.12 | 6.06 | 13.64 |
| 5,868.0 | 6.70 | 187.00 | 5,770.1 | 354.8 | 782.5 | -220.7 | 6.57 | 6.56 | 4.06 |
| 5,900.0 | 9.60 | 186.80 | 5,801.8 | 350.3 | 782.0 | -216.3 | 9.06 | 9.06 | -0.63 |
| 5,932.0 | 12.60 | 187.10 | 5,833.2 | 344.2 | 781.2 | -210.4 | 9.38 | 9.38 | 0.94 |
| 5,965.0 | 15.40 | 188.40 | 5,865.2 | 336.3 | 780.2 | -202.8 | 8.54 | 8.48 | 3.94 |
| 5,996.0 | 18.00 | 189.60 | 5,894.9 | 327.5 | 778.8 | -194.4 | 8.46 | 8.39 | 3.87 |
| 6,028.0 | 21.10 | 189.40 | 5,925.1 | 317.0 | 777.0 | -184.2 | 9.69 | 9.69 | -0.63 |
| 6,059.0 | 24.00 | 188.20 | 5,953.7 | 305.2 | 775.2 | -173.0 | 9.47 | 9.35 | -3.87 |
| 6,091.0 | 27.20 | 187.50 | 5,982.6 | 291.5 | 773.3 | -159.8 | 10.04 | 10.00 | -2.19 |
| 6,122.0 | 30.30 | 188.00 | 6,009.7 | 276.8 | 771.3 | -145.5 | 10.03 | 10.00 | 1.61 |
| 6,154.0 | 33.50 | 189.10 | 6,036.9 | 260.0 | 768.8 | -129.5 | 10.16 | 10.00 | 3.44 |
| 6,186.0 | 37.40 | 189.10 | 6,063.0 | 241.7 | 765.8 | -111.9 | 12.19 | 12.19 | 0.00 |
| 6,217.0 | 41.10 | 189.10 | 6,087.0 | 222.3 | 762.7 | -93.3 | 11.94 | 11.94 | 0.00 |
| 6,249.0 | 44.40 | 189.10 | 6,110.5 | 200.9 | 759.3 | -72.7 | 10.31 | 10.31 | 0.00 |
| 6,280.0 | 47.70 | 189.60 | 6,132.0 | 178.9 | 755.7 | -51.6 | 10.71 | 10.65 | 1.61 |

| | | | |
|------------------|--|-------------------------------------|--|
| Company: | BONANZA CREEK ENERGY OPERATING | Local Co-ordinate Reference: | Well State North Platte F-J-36HNB |
| Project: | SEC.36-T5N-R63W | TVD Reference: | WELL @ 4558.0ft (Ensign 128 RKB - 15') |
| Site: | State North Platte K-O-36HC Pad Sec.36-T5N-R63W | MD Reference: | WELL @ 4558.0ft (Ensign 128 RKB - 15') |
| Well: | State North Platte F-J-36HNB | North Reference: | True |
| Wellbore: | Wellbore #1 | Survey Calculation Method: | Minimum Curvature |
| Design: | Wellbore #1 | Database: | Landmark |

| Survey | | | | | | | | | |
|-----------------------|-----------------|-------------|---------------------|------------|------------|-----------------------|-----------------------|----------------------|---------------------|
| Measured Depth (ft) | Inclination (°) | Azimuth (°) | Vertical Depth (ft) | +N/-S (ft) | +E/-W (ft) | Vertical Section (ft) | Dogleg Rate (°/100ft) | Build Rate (°/100ft) | Turn Rate (°/100ft) |
| 6,312.0 | 51.10 | 189.80 | 6,152.8 | 154.9 | 751.6 | -28.6 | 10.64 | 10.63 | 0.63 |
| 6,343.0 | 53.90 | 189.20 | 6,171.7 | 130.7 | 747.5 | -5.4 | 9.16 | 9.03 | -1.94 |
| 6,375.0 | 56.80 | 188.70 | 6,189.8 | 104.7 | 743.4 | 19.6 | 9.15 | 9.06 | -1.56 |
| 6,407.0 | 60.00 | 188.20 | 6,206.6 | 77.7 | 739.4 | 45.5 | 10.09 | 10.00 | -1.56 |
| 6,438.0 | 63.00 | 186.80 | 6,221.4 | 50.7 | 735.9 | 71.5 | 10.46 | 9.68 | -4.52 |
| 6,470.0 | 66.60 | 185.00 | 6,235.0 | 21.9 | 732.9 | 99.5 | 12.35 | 11.25 | -5.63 |
| 6,502.0 | 70.10 | 182.90 | 6,246.8 | -7.7 | 730.9 | 128.4 | 12.52 | 10.94 | -6.56 |
| 6,533.0 | 71.50 | 181.50 | 6,257.0 | -37.0 | 729.7 | 157.0 | 6.21 | 4.52 | -4.52 |
| 6,565.0 | 73.40 | 179.60 | 6,266.7 | -67.5 | 729.4 | 187.1 | 8.20 | 5.94 | -5.94 |
| 6,597.0 | 76.20 | 178.20 | 6,275.1 | -98.4 | 730.0 | 217.6 | 9.72 | 8.75 | -4.38 |
| 6,628.0 | 78.80 | 178.00 | 6,281.8 | -128.6 | 731.0 | 247.6 | 8.41 | 8.39 | -0.65 |
| 6,660.0 | 81.80 | 177.50 | 6,287.2 | -160.1 | 732.3 | 278.9 | 9.50 | 9.38 | -1.56 |
| 6,660.4 | 81.84 | 177.49 | 6,287.2 | -160.6 | 732.3 | 279.3 | 10.17 | 10.00 | -1.89 |
| T1 531'FNL & 1304'FWL | | | | | | | | | |
| 6,692.0 | 85.00 | 176.90 | 6,290.8 | -191.9 | 733.8 | 310.5 | 10.17 | 10.00 | -1.87 |
| 6,708.0 | 86.40 | 176.80 | 6,292.0 | -207.8 | 734.7 | 326.3 | 8.77 | 8.75 | -0.63 |
| 6,821.0 | 88.80 | 176.20 | 6,296.8 | -320.5 | 741.6 | 438.6 | 2.19 | 2.12 | -0.53 |
| 6,853.0 | 90.40 | 176.60 | 6,297.0 | -352.4 | 743.6 | 470.4 | 5.15 | 5.00 | 1.25 |
| 6,884.0 | 91.50 | 176.20 | 6,296.5 | -383.4 | 745.6 | 501.3 | 3.78 | 3.55 | -1.29 |
| 6,916.0 | 92.20 | 176.20 | 6,295.5 | -415.3 | 747.7 | 533.1 | 2.19 | 2.19 | 0.00 |
| 6,947.0 | 92.20 | 175.90 | 6,294.3 | -446.2 | 749.8 | 563.9 | 0.97 | 0.00 | -0.97 |
| 6,979.0 | 92.20 | 175.70 | 6,293.0 | -478.1 | 752.2 | 595.8 | 0.62 | 0.00 | -0.63 |
| 7,011.0 | 92.20 | 175.70 | 6,291.8 | -510.0 | 754.6 | 627.6 | 0.00 | 0.00 | 0.00 |
| 7,042.0 | 92.10 | 175.40 | 6,290.6 | -540.8 | 757.0 | 658.5 | 1.02 | -0.32 | -0.97 |
| 7,074.0 | 91.50 | 175.90 | 6,289.6 | -572.7 | 759.4 | 690.3 | 2.44 | -1.88 | 1.56 |
| 7,106.0 | 91.10 | 176.90 | 6,288.9 | -604.7 | 761.4 | 722.1 | 3.36 | -1.25 | 3.13 |
| 7,138.0 | 90.80 | 177.10 | 6,288.4 | -636.6 | 763.1 | 753.9 | 1.13 | -0.94 | 0.63 |
| 7,169.0 | 90.20 | 178.00 | 6,288.1 | -667.6 | 764.4 | 784.7 | 3.49 | -1.94 | 2.90 |
| 7,201.0 | 90.10 | 178.40 | 6,288.0 | -699.6 | 765.4 | 816.4 | 1.29 | -0.31 | 1.25 |
| 7,232.0 | 89.90 | 178.90 | 6,288.0 | -730.6 | 766.1 | 847.1 | 1.74 | -0.65 | 1.61 |
| 7,264.0 | 90.50 | 179.20 | 6,287.9 | -762.5 | 766.7 | 878.7 | 2.10 | 1.88 | 0.94 |
| 7,295.0 | 91.60 | 179.20 | 6,287.3 | -793.5 | 767.1 | 909.4 | 3.55 | 3.55 | 0.00 |
| 7,327.0 | 91.50 | 179.20 | 6,286.5 | -825.5 | 767.5 | 941.0 | 0.31 | -0.31 | 0.00 |
| 7,358.0 | 90.60 | 178.70 | 6,285.9 | -856.5 | 768.1 | 971.6 | 3.32 | -2.90 | -1.61 |
| 7,390.0 | 90.00 | 178.50 | 6,285.7 | -888.5 | 768.9 | 1,003.3 | 1.98 | -1.88 | -0.63 |
| 7,421.0 | 89.40 | 179.20 | 6,285.9 | -919.5 | 769.5 | 1,034.0 | 2.97 | -1.94 | 2.26 |
| 7,452.0 | 89.10 | 180.30 | 6,286.3 | -950.5 | 769.6 | 1,064.6 | 3.68 | -0.97 | 3.55 |
| 7,484.0 | 90.40 | 181.70 | 6,286.5 | -982.5 | 769.1 | 1,096.0 | 5.97 | 4.06 | 4.38 |
| 7,516.0 | 91.60 | 183.40 | 6,285.9 | -1,014.4 | 767.7 | 1,127.3 | 6.50 | 3.75 | 5.31 |
| 7,548.0 | 90.70 | 184.00 | 6,285.3 | -1,046.4 | 765.6 | 1,158.5 | 3.38 | -2.81 | 1.88 |
| 7,579.0 | 88.80 | 184.20 | 6,285.4 | -1,077.3 | 763.4 | 1,188.6 | 6.16 | -6.13 | 0.65 |
| 7,611.0 | 88.50 | 184.30 | 6,286.1 | -1,109.2 | 761.0 | 1,219.7 | 0.99 | -0.94 | 0.31 |
| 7,643.0 | 89.10 | 183.60 | 6,286.8 | -1,141.1 | 758.8 | 1,250.8 | 2.88 | 1.88 | -2.19 |
| 7,675.0 | 89.80 | 182.90 | 6,287.1 | -1,173.1 | 757.0 | 1,282.0 | 3.09 | 2.19 | -2.19 |
| 7,706.0 | 90.20 | 182.20 | 6,287.1 | -1,204.0 | 755.6 | 1,312.3 | 2.60 | 1.29 | -2.26 |
| 7,738.0 | 90.70 | 180.60 | 6,286.9 | -1,236.0 | 754.8 | 1,343.7 | 5.24 | 1.56 | -5.00 |
| 7,770.0 | 90.90 | 180.30 | 6,286.4 | -1,268.0 | 754.6 | 1,375.3 | 1.13 | 0.63 | -0.94 |
| 7,801.0 | 90.90 | 180.10 | 6,285.9 | -1,299.0 | 754.5 | 1,405.8 | 0.65 | 0.00 | -0.65 |
| 7,833.0 | 90.40 | 179.40 | 6,285.6 | -1,331.0 | 754.6 | 1,437.4 | 2.69 | -1.56 | -2.19 |
| 7,864.0 | 90.00 | 179.20 | 6,285.5 | -1,362.0 | 755.0 | 1,468.0 | 1.44 | -1.29 | -0.65 |
| 7,896.0 | 89.50 | 179.90 | 6,285.6 | -1,394.0 | 755.2 | 1,499.6 | 2.69 | -1.56 | 2.19 |
| 7,928.0 | 88.50 | 181.00 | 6,286.2 | -1,426.0 | 755.0 | 1,531.1 | 4.65 | -3.13 | 3.44 |
| 7,959.0 | 88.30 | 181.90 | 6,287.0 | -1,457.0 | 754.2 | 1,561.6 | 2.97 | -0.65 | 2.90 |

| | | | |
|------------------|--|-------------------------------------|--|
| Company: | BONANZA CREEK ENERGY OPERATING | Local Co-ordinate Reference: | Well State North Platte F-J-36HNB |
| Project: | SEC.36-T5N-R63W | TVD Reference: | WELL @ 4558.0ft (Ensign 128 RKB - 15') |
| Site: | State North Platte K-O-36HC Pad Sec.36-T5N-R63W | MD Reference: | WELL @ 4558.0ft (Ensign 128 RKB - 15') |
| Well: | State North Platte F-J-36HNB | North Reference: | True |
| Wellbore: | Wellbore #1 | Survey Calculation Method: | Minimum Curvature |
| Design: | Wellbore #1 | Database: | Landmark |

| Survey | | | | | | | | | |
|---------------------|-----------------|-------------|---------------------|------------|------------|-----------------------|-----------------------|----------------------|---------------------|
| Measured Depth (ft) | Inclination (°) | Azimuth (°) | Vertical Depth (ft) | +N/-S (ft) | +E/-W (ft) | Vertical Section (ft) | Dogleg Rate (°/100ft) | Build Rate (°/100ft) | Turn Rate (°/100ft) |
| 7,991.0 | 88.50 | 182.60 | 6,287.9 | -1,488.9 | 753.0 | 1,592.9 | 2.27 | 0.63 | 2.19 |
| 8,022.0 | 89.30 | 181.00 | 6,288.5 | -1,519.9 | 752.0 | 1,623.3 | 5.77 | 2.58 | -5.16 |
| 8,054.0 | 90.70 | 180.20 | 6,288.5 | -1,551.9 | 751.6 | 1,654.8 | 5.04 | 4.38 | -2.50 |
| 8,086.0 | 90.30 | 178.90 | 6,288.2 | -1,583.9 | 751.9 | 1,686.4 | 4.25 | -1.25 | -4.06 |
| 8,117.0 | 89.40 | 179.10 | 6,288.3 | -1,614.9 | 752.4 | 1,717.0 | 2.97 | -2.90 | 0.65 |
| 8,149.0 | 89.10 | 179.60 | 6,288.7 | -1,646.9 | 752.8 | 1,748.6 | 1.82 | -0.94 | 1.56 |
| 8,180.0 | 89.50 | 179.60 | 6,289.1 | -1,677.9 | 753.0 | 1,779.2 | 1.29 | 1.29 | 0.00 |
| 8,212.0 | 89.70 | 179.60 | 6,289.3 | -1,709.9 | 753.2 | 1,810.8 | 0.63 | 0.63 | 0.00 |
| 8,244.0 | 90.10 | 180.30 | 6,289.4 | -1,741.9 | 753.3 | 1,842.4 | 2.52 | 1.25 | 2.19 |
| 8,276.0 | 90.70 | 180.50 | 6,289.2 | -1,773.9 | 753.0 | 1,873.9 | 1.98 | 1.88 | 0.63 |
| 8,308.0 | 91.20 | 180.80 | 6,288.6 | -1,805.9 | 752.7 | 1,905.4 | 1.82 | 1.56 | 0.94 |
| 8,340.0 | 91.00 | 180.50 | 6,288.0 | -1,837.9 | 752.3 | 1,936.9 | 1.13 | -0.63 | -0.94 |
| 8,371.0 | 90.70 | 180.50 | 6,287.6 | -1,868.9 | 752.0 | 1,967.4 | 0.97 | -0.97 | 0.00 |
| 8,403.0 | 90.20 | 180.30 | 6,287.3 | -1,900.9 | 751.8 | 1,999.0 | 1.68 | -1.56 | -0.63 |
| 8,434.0 | 89.60 | 180.10 | 6,287.4 | -1,931.9 | 751.7 | 2,029.5 | 2.04 | -1.94 | -0.65 |
| 8,466.0 | 89.90 | 180.10 | 6,287.5 | -1,963.9 | 751.7 | 2,061.1 | 0.94 | 0.94 | 0.00 |
| 8,497.0 | 90.70 | 180.30 | 6,287.3 | -1,994.9 | 751.6 | 2,091.6 | 2.66 | 2.58 | 0.65 |
| 8,529.0 | 90.50 | 180.80 | 6,287.0 | -2,026.9 | 751.2 | 2,123.1 | 1.68 | -0.63 | 1.56 |
| 8,560.0 | 90.10 | 181.00 | 6,286.8 | -2,057.9 | 750.8 | 2,153.6 | 1.44 | -1.29 | 0.65 |
| 8,592.0 | 89.90 | 181.20 | 6,286.8 | -2,089.9 | 750.1 | 2,185.1 | 0.88 | -0.63 | 0.63 |
| 8,624.0 | 89.00 | 181.70 | 6,287.2 | -2,121.8 | 749.3 | 2,216.5 | 3.22 | -2.81 | 1.56 |
| 8,655.0 | 88.70 | 181.70 | 6,287.8 | -2,152.8 | 748.4 | 2,246.9 | 0.97 | -0.97 | 0.00 |
| 8,687.0 | 88.50 | 181.70 | 6,288.6 | -2,184.8 | 747.5 | 2,278.3 | 0.63 | -0.63 | 0.00 |
| 8,718.0 | 88.80 | 181.90 | 6,289.3 | -2,215.8 | 746.5 | 2,308.7 | 1.16 | 0.97 | 0.65 |
| 8,750.0 | 88.90 | 181.30 | 6,289.9 | -2,247.8 | 745.6 | 2,340.0 | 1.90 | 0.31 | -1.88 |
| 8,781.0 | 89.30 | 181.70 | 6,290.4 | -2,278.7 | 744.8 | 2,370.5 | 1.82 | 1.29 | 1.29 |
| 8,813.0 | 89.00 | 181.00 | 6,290.9 | -2,310.7 | 744.0 | 2,401.9 | 2.38 | -0.94 | -2.19 |
| 8,845.0 | 89.30 | 180.80 | 6,291.4 | -2,342.7 | 743.5 | 2,433.4 | 1.13 | 0.94 | -0.63 |
| 8,876.0 | 89.50 | 181.00 | 6,291.7 | -2,373.7 | 743.0 | 2,463.9 | 0.91 | 0.65 | 0.65 |
| 8,907.0 | 90.10 | 181.30 | 6,291.8 | -2,404.7 | 742.4 | 2,494.3 | 2.16 | 1.94 | 0.97 |
| 8,939.0 | 91.30 | 181.70 | 6,291.4 | -2,436.7 | 741.6 | 2,525.7 | 3.95 | 3.75 | 1.25 |
| 8,971.0 | 92.20 | 181.70 | 6,290.4 | -2,468.7 | 740.6 | 2,557.1 | 2.81 | 2.81 | 0.00 |
| 9,002.0 | 92.10 | 181.50 | 6,289.3 | -2,499.6 | 739.8 | 2,587.5 | 0.72 | -0.32 | -0.65 |
| 9,034.0 | 91.70 | 180.50 | 6,288.2 | -2,531.6 | 739.2 | 2,618.9 | 3.36 | -1.25 | -3.13 |
| 9,065.0 | 91.50 | 180.50 | 6,287.3 | -2,562.6 | 738.9 | 2,649.5 | 0.65 | -0.65 | 0.00 |
| 9,097.0 | 90.80 | 180.30 | 6,286.7 | -2,594.6 | 738.7 | 2,681.0 | 2.28 | -2.19 | -0.63 |
| 9,128.0 | 90.00 | 179.90 | 6,286.5 | -2,625.6 | 738.7 | 2,711.5 | 2.89 | -2.58 | -1.29 |
| 9,160.0 | 89.20 | 179.90 | 6,286.7 | -2,657.6 | 738.7 | 2,743.1 | 2.50 | -2.50 | 0.00 |
| 9,192.0 | 89.20 | 180.10 | 6,287.2 | -2,689.6 | 738.7 | 2,774.7 | 0.62 | 0.00 | 0.63 |
| 9,223.0 | 90.00 | 179.90 | 6,287.4 | -2,720.6 | 738.7 | 2,805.2 | 2.66 | 2.58 | -0.65 |
| 9,255.0 | 90.60 | 180.30 | 6,287.2 | -2,752.6 | 738.7 | 2,836.8 | 2.25 | 1.88 | 1.25 |
| 9,287.0 | 90.40 | 180.50 | 6,286.9 | -2,784.6 | 738.4 | 2,868.3 | 0.88 | -0.63 | 0.63 |
| 9,318.0 | 89.30 | 180.50 | 6,287.0 | -2,815.6 | 738.2 | 2,898.8 | 3.55 | -3.55 | 0.00 |
| 9,349.0 | 89.20 | 180.10 | 6,287.4 | -2,846.6 | 738.0 | 2,929.4 | 1.33 | -0.32 | -1.29 |
| 9,381.0 | 89.50 | 180.30 | 6,287.8 | -2,878.6 | 737.9 | 2,960.9 | 1.13 | 0.94 | 0.63 |
| 9,412.0 | 89.50 | 181.00 | 6,288.0 | -2,909.6 | 737.5 | 2,991.4 | 2.26 | 0.00 | 2.26 |
| 9,444.0 | 89.00 | 181.20 | 6,288.5 | -2,941.6 | 736.9 | 3,022.9 | 1.68 | -1.56 | 0.63 |
| 9,475.0 | 88.60 | 181.50 | 6,289.1 | -2,972.5 | 736.2 | 3,053.3 | 1.61 | -1.29 | 0.97 |
| 9,507.0 | 88.60 | 181.50 | 6,289.9 | -3,004.5 | 735.4 | 3,084.7 | 0.00 | 0.00 | 0.00 |
| 9,538.0 | 88.90 | 181.50 | 6,290.6 | -3,035.5 | 734.6 | 3,115.1 | 0.97 | 0.97 | 0.00 |
| 9,570.0 | 90.00 | 182.00 | 6,290.9 | -3,067.5 | 733.6 | 3,146.5 | 3.78 | 3.44 | 1.56 |
| 9,602.0 | 90.50 | 182.20 | 6,290.7 | -3,099.5 | 732.4 | 3,177.9 | 1.68 | 1.56 | 0.63 |
| 9,634.0 | 90.80 | 182.20 | 6,290.4 | -3,131.4 | 731.2 | 3,209.2 | 0.94 | 0.94 | 0.00 |

| | | | |
|------------------|--|-------------------------------------|--|
| Company: | BONANZA CREEK ENERGY OPERATING | Local Co-ordinate Reference: | Well State North Platte F-J-36HNB |
| Project: | SEC.36-T5N-R63W | TVD Reference: | WELL @ 4558.0ft (Ensign 128 RKB - 15') |
| Site: | State North Platte K-O-36HC Pad Sec.36-T5N-R63W | MD Reference: | WELL @ 4558.0ft (Ensign 128 RKB - 15') |
| Well: | State North Platte F-J-36HNB | North Reference: | True |
| Wellbore: | Wellbore #1 | Survey Calculation Method: | Minimum Curvature |
| Design: | Wellbore #1 | Database: | Landmark |

| Survey | | | | | | | | | |
|------------------------|-----------------|-------------|---------------------|------------|------------|-----------------------|-----------------------|----------------------|---------------------|
| Measured Depth (ft) | Inclination (°) | Azimuth (°) | Vertical Depth (ft) | +N/-S (ft) | +E/-W (ft) | Vertical Section (ft) | Dogleg Rate (°/100ft) | Build Rate (°/100ft) | Turn Rate (°/100ft) |
| 9,665.0 | 90.40 | 182.40 | 6,290.0 | -3,162.4 | 729.9 | 3,239.5 | 1.44 | -1.29 | 0.65 |
| 9,697.0 | 90.80 | 181.20 | 6,289.7 | -3,194.4 | 728.9 | 3,270.9 | 3.95 | 1.25 | -3.75 |
| 9,729.0 | 91.00 | 180.80 | 6,289.2 | -3,226.4 | 728.4 | 3,302.4 | 1.40 | 0.63 | -1.25 |
| 9,761.0 | 91.20 | 180.60 | 6,288.6 | -3,258.4 | 728.0 | 3,333.9 | 0.88 | 0.63 | -0.63 |
| 9,792.0 | 90.70 | 179.60 | 6,288.1 | -3,289.4 | 727.9 | 3,364.4 | 3.61 | -1.61 | -3.23 |
| 9,825.0 | 89.90 | 179.10 | 6,287.9 | -3,322.4 | 728.3 | 3,397.0 | 2.86 | -2.42 | -1.52 |
| 9,856.0 | 90.20 | 179.10 | 6,287.9 | -3,353.4 | 728.8 | 3,427.7 | 0.97 | 0.97 | 0.00 |
| 9,887.0 | 89.80 | 179.80 | 6,287.9 | -3,384.4 | 729.1 | 3,458.3 | 2.60 | -1.29 | 2.26 |
| 9,918.0 | 89.00 | 179.90 | 6,288.2 | -3,415.4 | 729.2 | 3,488.9 | 2.60 | -2.58 | 0.32 |
| 9,950.0 | 89.00 | 180.50 | 6,288.8 | -3,447.4 | 729.1 | 3,520.4 | 1.87 | 0.00 | 1.88 |
| 9,981.0 | 89.80 | 180.60 | 6,289.1 | -3,478.4 | 728.8 | 3,551.0 | 2.60 | 2.58 | 0.32 |
| 10,013.0 | 89.50 | 180.50 | 6,289.3 | -3,510.4 | 728.4 | 3,582.5 | 0.99 | -0.94 | -0.31 |
| 10,045.0 | 89.30 | 181.00 | 6,289.6 | -3,542.3 | 728.0 | 3,613.9 | 1.68 | -0.63 | 1.56 |
| 10,077.0 | 90.50 | 181.50 | 6,289.7 | -3,574.3 | 727.3 | 3,645.4 | 4.06 | 3.75 | 1.56 |
| 10,108.0 | 91.40 | 181.50 | 6,289.2 | -3,605.3 | 726.5 | 3,675.8 | 2.90 | 2.90 | 0.00 |
| 10,140.0 | 92.00 | 181.90 | 6,288.2 | -3,637.3 | 725.6 | 3,707.2 | 2.25 | 1.88 | 1.25 |
| 10,171.0 | 91.60 | 182.20 | 6,287.2 | -3,668.3 | 724.5 | 3,737.5 | 1.61 | -1.29 | 0.97 |
| 10,203.0 | 89.50 | 182.40 | 6,286.9 | -3,700.2 | 723.2 | 3,768.9 | 6.59 | -6.56 | 0.63 |
| 10,235.0 | 88.50 | 182.70 | 6,287.5 | -3,732.2 | 721.8 | 3,800.1 | 3.26 | -3.13 | 0.94 |
| 10,267.0 | 88.70 | 182.60 | 6,288.3 | -3,764.2 | 720.3 | 3,831.4 | 0.70 | 0.63 | -0.31 |
| 10,299.0 | 89.30 | 182.40 | 6,288.8 | -3,796.1 | 718.9 | 3,862.7 | 1.98 | 1.88 | -0.63 |
| 10,330.0 | 89.90 | 182.20 | 6,289.0 | -3,827.1 | 717.6 | 3,893.1 | 2.04 | 1.94 | -0.65 |
| 10,362.0 | 90.70 | 182.70 | 6,288.9 | -3,859.1 | 716.3 | 3,924.4 | 2.95 | 2.50 | 1.56 |
| 10,394.0 | 90.90 | 181.90 | 6,288.4 | -3,891.0 | 715.0 | 3,955.7 | 2.58 | 0.63 | -2.50 |
| 10,425.0 | 90.60 | 180.80 | 6,288.0 | -3,922.0 | 714.3 | 3,986.1 | 3.68 | -0.97 | -3.55 |
| 10,456.0 | 90.10 | 180.60 | 6,287.8 | -3,953.0 | 713.9 | 4,016.6 | 1.74 | -1.61 | -0.65 |
| 10,488.0 | 89.90 | 179.60 | 6,287.8 | -3,985.0 | 713.8 | 4,048.2 | 3.19 | -0.63 | -3.13 |
| 10,520.0 | 89.80 | 178.90 | 6,287.9 | -4,017.0 | 714.2 | 4,079.8 | 2.21 | -0.31 | -2.19 |
| 10,552.0 | 89.60 | 178.50 | 6,288.1 | -4,049.0 | 715.0 | 4,111.5 | 1.40 | -0.63 | -1.25 |
| 10,583.0 | 88.90 | 177.80 | 6,288.5 | -4,080.0 | 716.0 | 4,142.2 | 3.19 | -2.26 | -2.26 |
| 10,615.0 | 89.60 | 178.00 | 6,288.9 | -4,112.0 | 717.1 | 4,173.9 | 2.28 | 2.19 | 0.63 |
| 10,646.0 | 90.10 | 178.00 | 6,289.0 | -4,142.9 | 718.2 | 4,204.7 | 1.61 | 1.61 | 0.00 |
| 10,678.0 | 90.20 | 178.00 | 6,288.9 | -4,174.9 | 719.3 | 4,236.4 | 0.31 | 0.31 | 0.00 |
| 10,710.0 | 91.00 | 178.40 | 6,288.6 | -4,206.9 | 720.3 | 4,268.1 | 2.80 | 2.50 | 1.25 |
| 10,742.0 | 91.70 | 178.50 | 6,287.8 | -4,238.9 | 721.2 | 4,299.8 | 2.21 | 2.19 | 0.31 |
| 10,769.0 | 92.10 | 178.50 | 6,286.9 | -4,265.9 | 721.9 | 4,326.5 | 1.48 | 1.48 | 0.00 |
| 10,821.0 | 92.10 | 178.50 | 6,285.0 | -4,317.8 | 723.3 | 4,378.0 | 0.00 | 0.00 | 0.00 |
| BHL 470'FSL & 1290'FWL | | | | | | | | | |

| | | |
|-------------------|--------------------|-------------|
| Checked By: _____ | Approved By: _____ | Date: _____ |
|-------------------|--------------------|-------------|