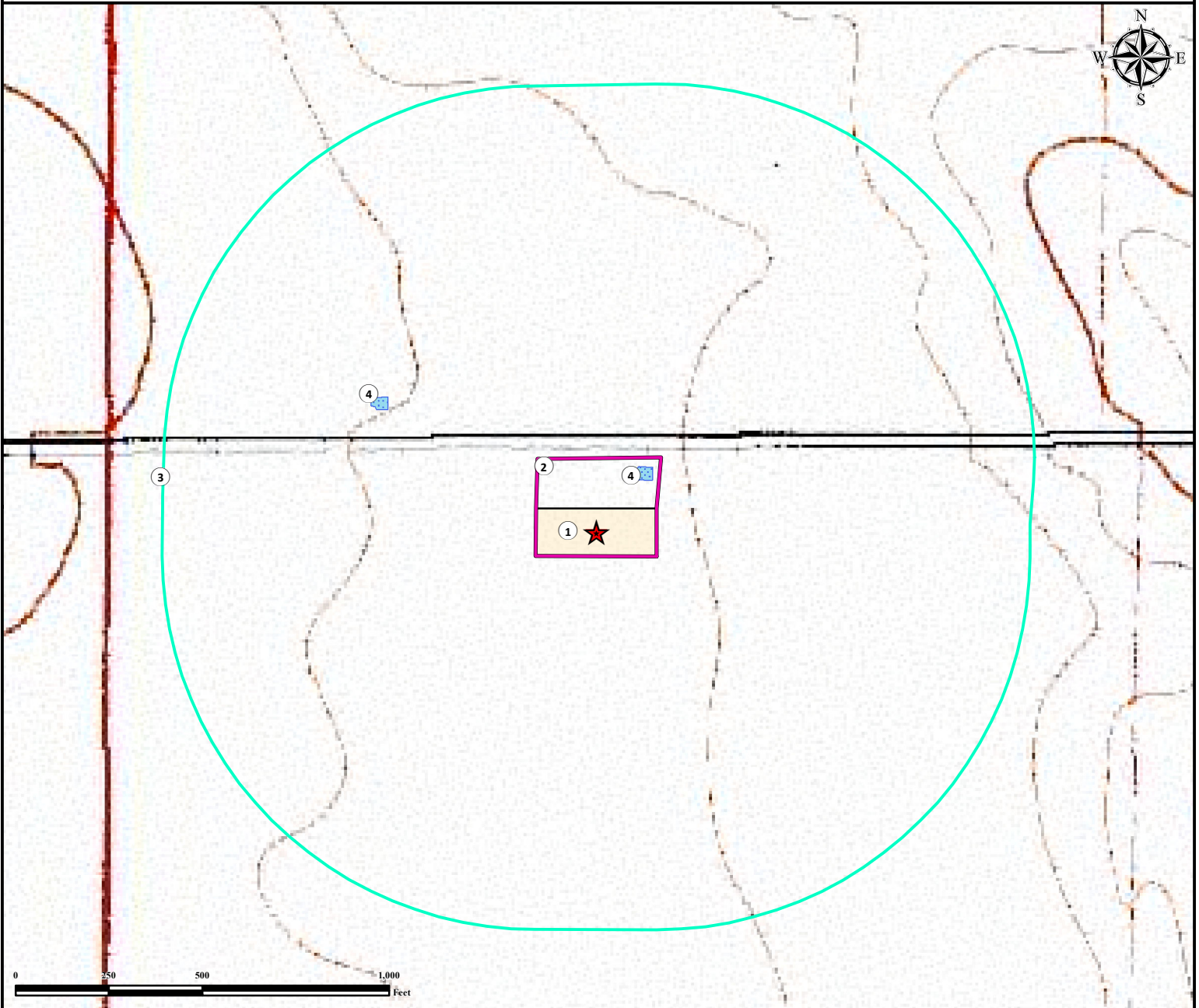


Hydrology Map

WICKSTROM - 67N59W

Lots 3 & 4 SECTION 6, TOWNSHIP 7 NORTH, RANGE 59 WEST OF THE 6TH PRINCIPAL MERIDIAN




1. Proposed WICKSTROM 67N59W Facility Expansion.
2. Operational Disturbance Area.
3. 1000' Radius.
4. Produced Water Pits are $\pm 176'$ NE and $\pm 648'$ NW.

Legend

- | | |
|--|--|
|  Proposed Facility |  1000' Radius |
|  Disturbance Area |  Produced Water Pit |

Reference Location

** All Measurements are Made from Reference Point  **

Lat: 40.610860° Long: -104.025991° (NAD83)
Elevation: 4968 Feet



Use our resources to find yours!
www.petro-fs.com
(303) 928-7128

Field Date: 10/11/2013
Drafting Date: 10/15/2013
Drafter: JLF
Revision:

Data Sources:
- Topo courtesy USGS

Prepared for:

**Foundation Energy
Management, LLC**