

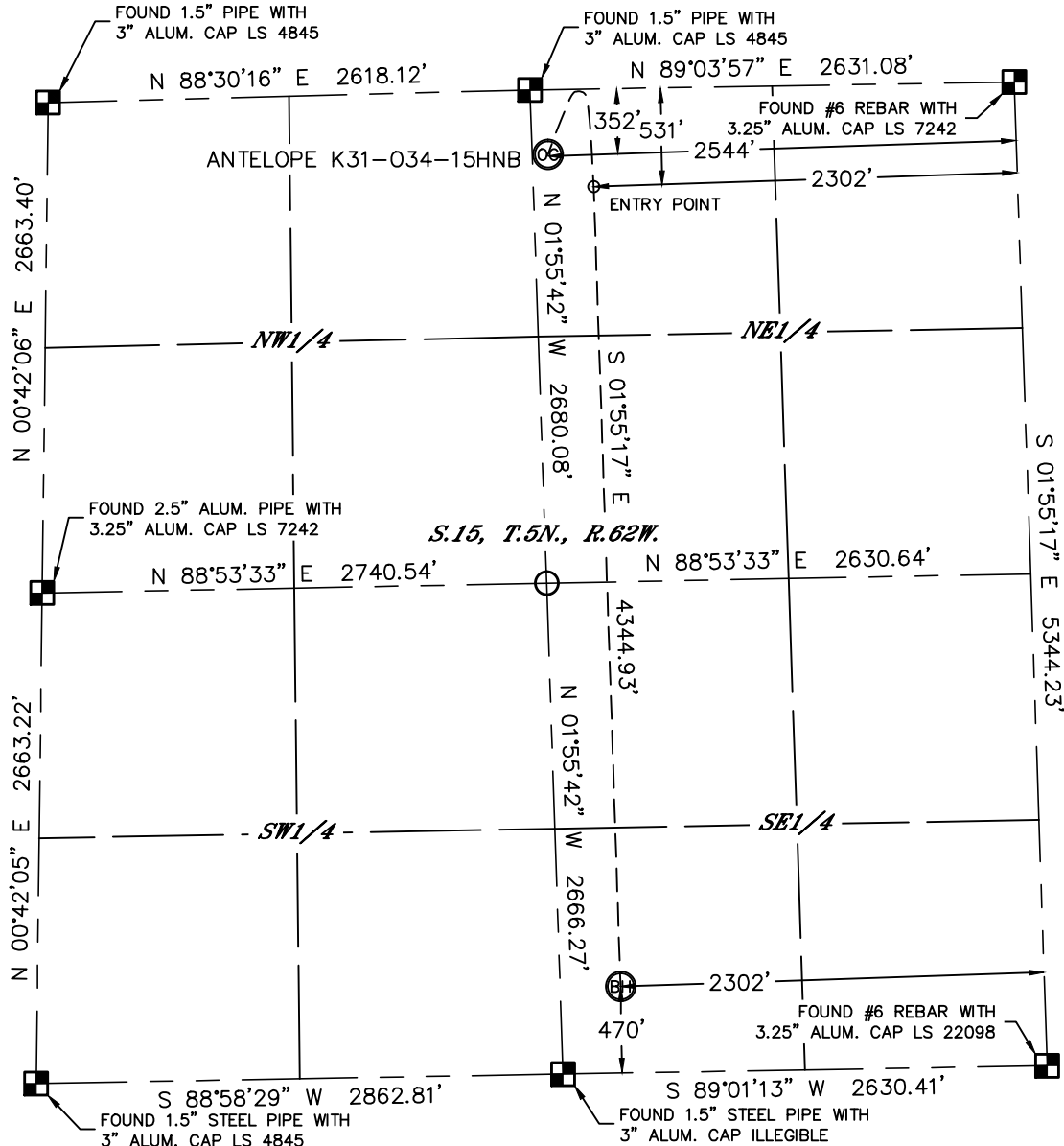


Lat40°, Inc. 1635 Foxtrail Drive, Suite 325 Loveland, CO 970-776-3321

WELL LOCATION CERTIFICATE

SECTION: 15
TOWNSHIP: 5N
RANGE: 62W

THIS MAP DOES NOT REPRESENT A BOUNDARY SURVEY



In accordance with a request from Keith Caplan with BONANZA CREEK ENERGY, INC. Lat40°, Inc. has determined the surface location of the ANTELOPE K31-034-15HNB to be 352' from the NORTH line and 2544' from the EAST line and the bottom hole to be 470' from the SOUTH line and 2302' from the EAST line as measured at right angles from the section lines of Section 15, Township 5 North, Range 62 West of the Sixth Principal Meridian, County of Weld, State of Colorado.

I hereby state that this Well Location Certificate was prepared by me, or under my direct supervision, that the fieldwork was completed on 9/28/2013, for and on behalf of BONANZA CREEK ENERGY, INC. That this is not a Land Survey Plat or an Improvement Survey Plat, and that it is not to be relied upon for establishment of fence, building, or other future improvement lines.

NOTE:

- 1) Bearings shown are Grid Bearings of the Colorado State Plane Coordinate System, North Zone, North American Datum 1983/2007. The lineal dimensions as contained herein are based upon the "U.S. Survey Foot."
- 2) Ground elevations are based on an observed GPS elevation (NAVD 1988 DATUM).
- 3) IMPROVEMENTS: See LOCATION DRAWING for all visible improvements within 500' of disturbed area.
- 4) SURFACE USE: RANGELAND
- 5) INSTRUMENT OPERATOR: BRIAN ROTTINGHAUS
- 6) NEAREST CULTURAL ITEMS:
BUILDING 5280'+
BUILDING UNIT 5280'+
HIGH OCCUPANCY BUILDING UNIT 5280'+
DESIGNATED OUTDOOR ACTIVITY AREA 5280'+
PUBLIC ROAD 5280'+
ABOVE GROUND UTILITY 2426' NW
RAILROAD 5280'+
PROPERTY LINE 352' N

SURFACE LOCATION

LAT: 40.40631°N
LONG: 104.30910°W
PDOP: 2.8
ELEV: 4680'
1/4,1/4: NW1/4NE1/4

BOTTOM HOLE

LAT: 40.39390°N
LONG: 104.30791°W
1/4,1/4: SW1/4SE1/4

ENTRY POINT

LAT: 40.40583°N
LONG: 104.30822°W
1/4,1/4: NW1/4NE1/4

LEGEND

- = ALIQUOT MONUMENT AS DESCRIBED
○ = CALCULATED POSITION

Kyle E. Rutz—On behalf of
Colorado Licensed Professional
Land Surveyor No. 38307
PROJECT#: 2012071

