

DRIVING DIRECTIONS

From I-70 Rifle, Colorado Exit Travel Southerly.

Dist. Direction

- 0.1 mi. turn left (east) onto Airport Road (CR346)
- 1.8 mi. turn right (south) onto West Mamm Creek Road (CR319)
- 4.5 mi. turn left (easterly) onto an oil and gas road, continue easterly, then southerly to the 11W well pad access road
- 1.6 mi. turn right (west) onto existing access road
- 0.1 mi. arrive at location

Legend

- HUNTER MESA WATER TREATMENT FACILITY
- EXISTING ROAD

Encana Oil & Gas (USA) Inc.

HUNTER MESA WATER TREATMENT FACILITY
 Section 1, T7S, R93W, 6th P.M.
 GARFIELD COUNTY, COLORADO

Figure 2
TOPO A

PROJECT No. 12-04-42

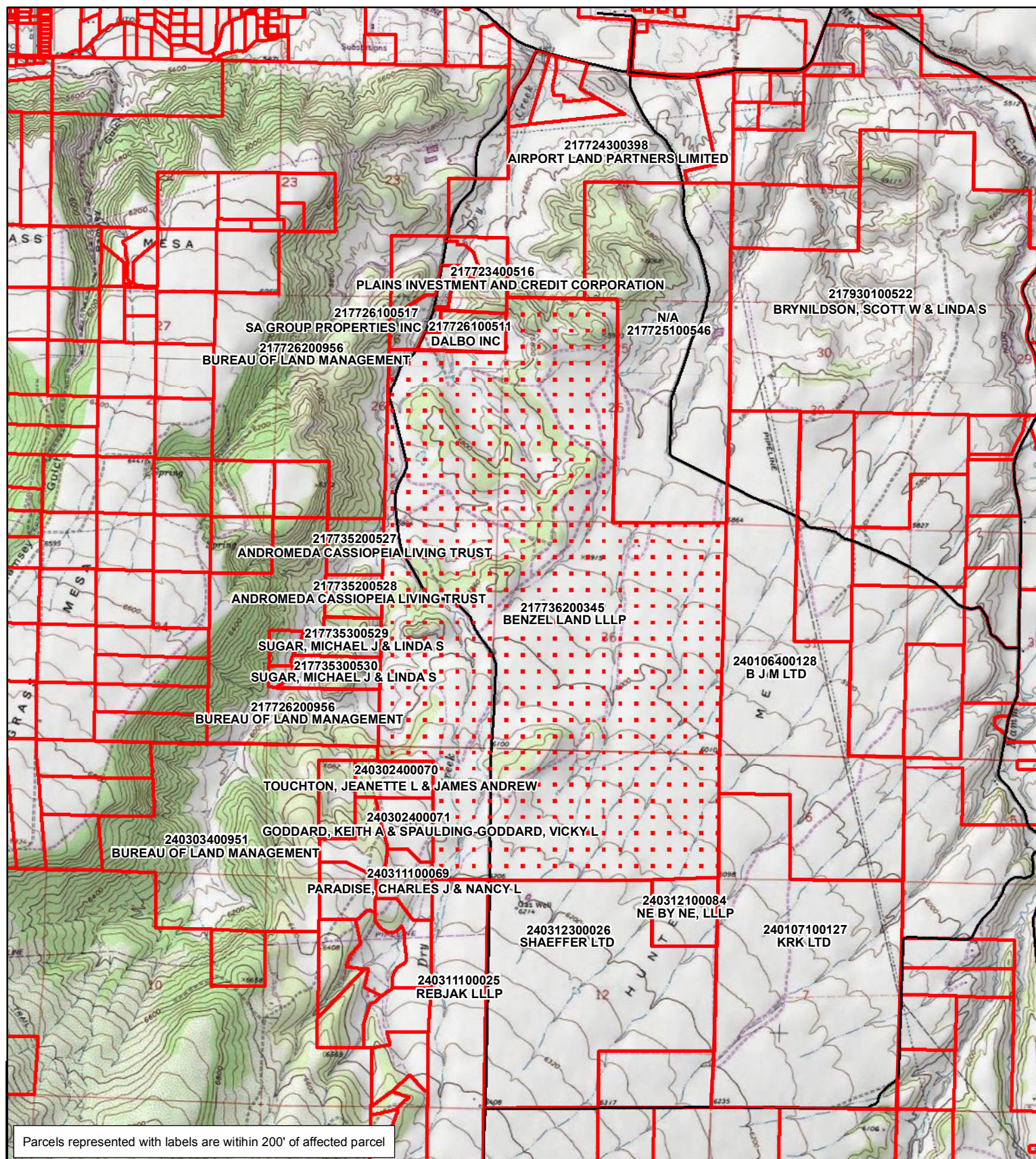
DATE: 5/29/2013

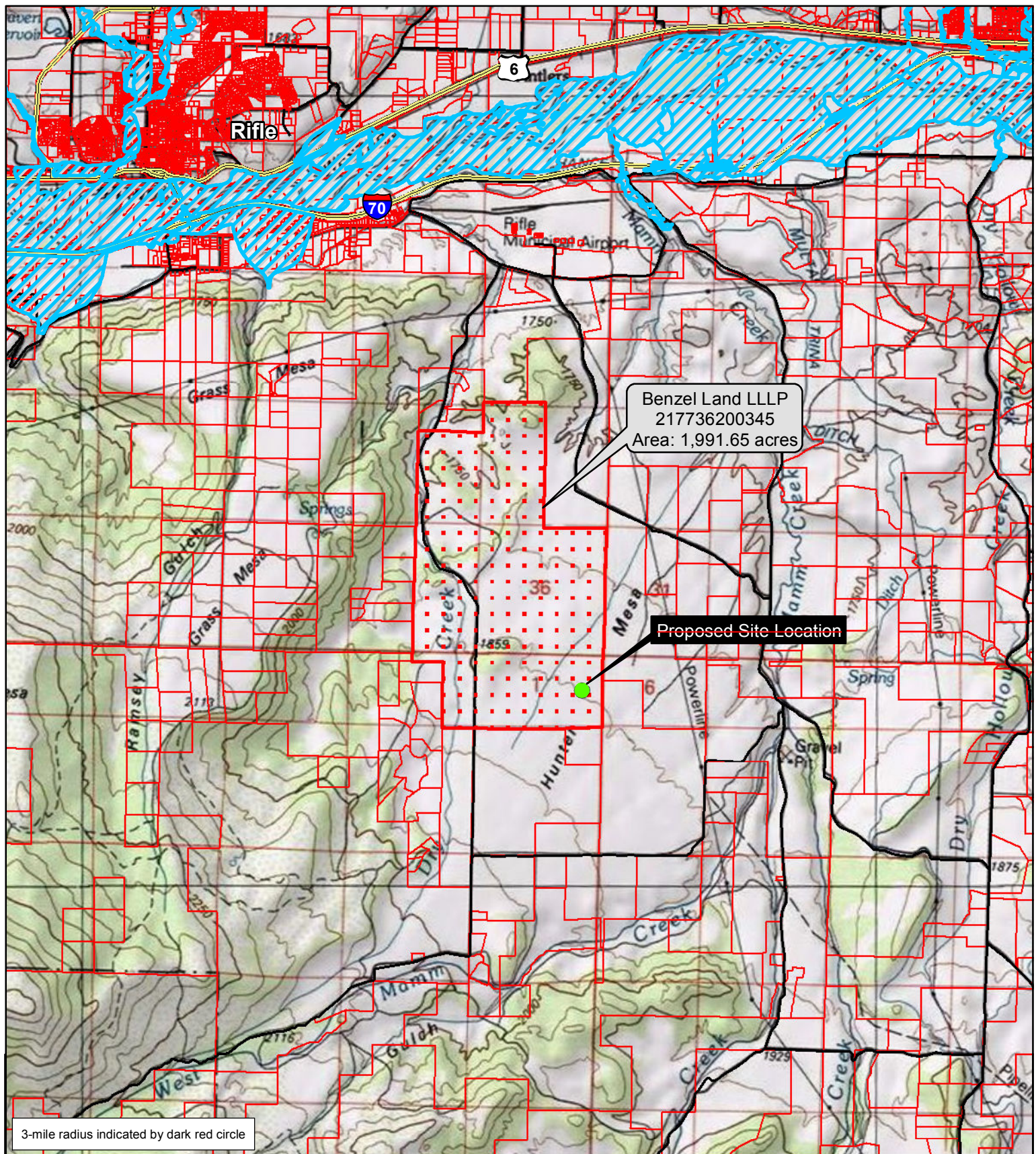
SCALE: 1:100,000

1
 of 1



Wasatch Surveying Associates
 906 Main Street Evanston, Wyoming 82930
 Phone No. (307) 789-4545 Fax (307) 789-5722





PROJECT NO: 012-0400

DRAWN BY: Jenna Muhlbach

DATE: 3/12/12

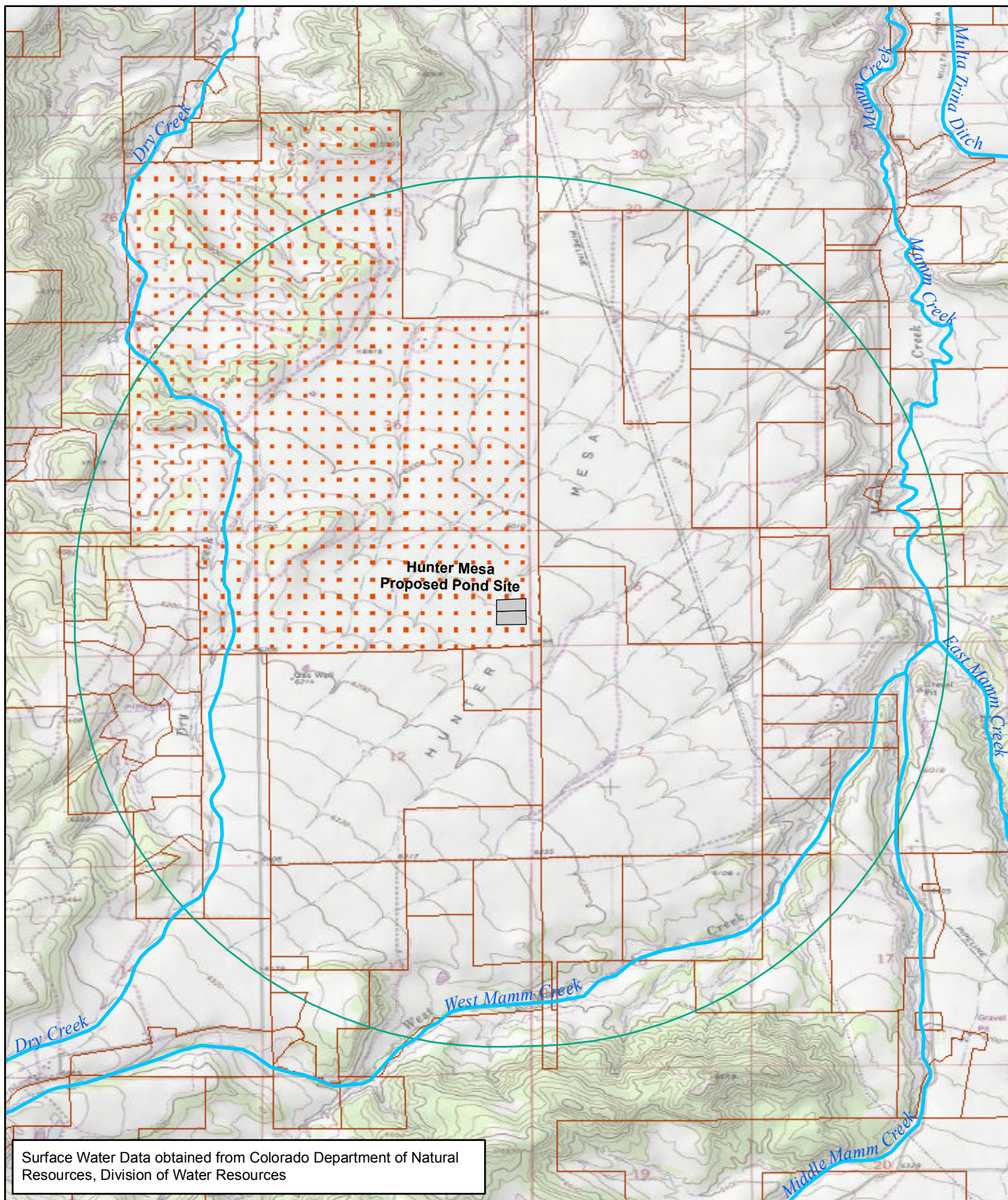
FLOODPLAIN MAP
ENCANA OIL & GAS (USA) INC.
HUNTER MESA POND SITE
GARFIELD COUNTY, COLORADO

OLSSON
ASSOCIATES

826 21-1/2 ROAD
GRAND JUNCTION,
CO 81505
TEL 970.263.7800
FAX 970.263.7456

FIGURE

Figure 5
3



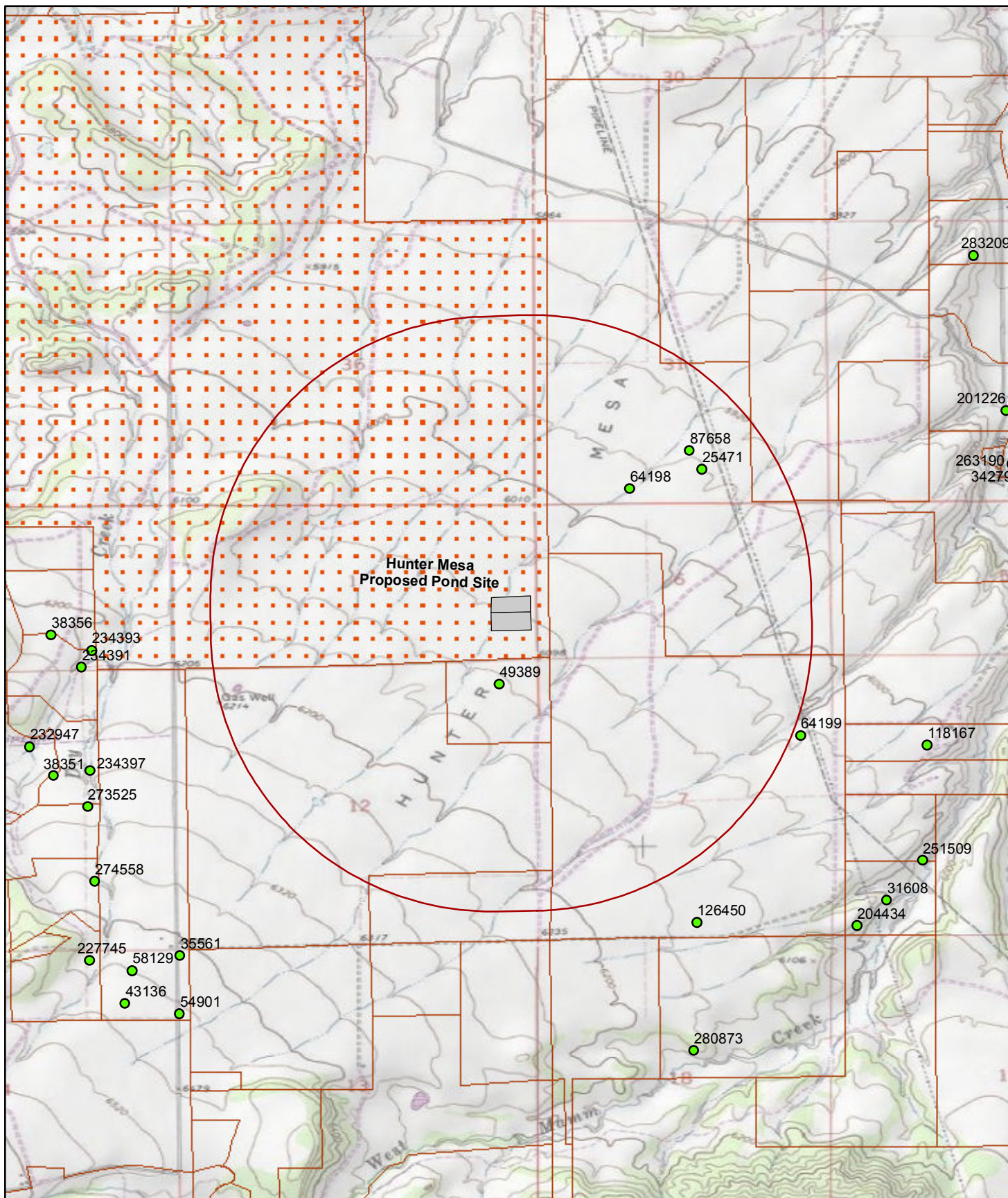
Legend

- Surface Water
- Hunter Mesa Pond Site
- 2 Mile Buffer
- Garfield County Parcels
- 2177-362-00-345 (Area: 1,991.65 acres)

Figure 6
 Surface Water Map
 Hunter Mesa Pond Site
 Garfield County, Colorado
 Encana Oil & Gas (USA), Inc.

0 0.25 0.5 1
 Mile





Legend

- Groundwater Wells
- Hunter Mesa Pond Site
- 1 Mile Buffer
- Garfield County Parcels
- 2177-362-00-345 (Area: 1,991.65 acres)

Figure 7
 Groundwater Well Map
 Hunter Mesa Pond Site
 Garfield County, Colorado
 Encana Oil & Gas (USA), Inc.

