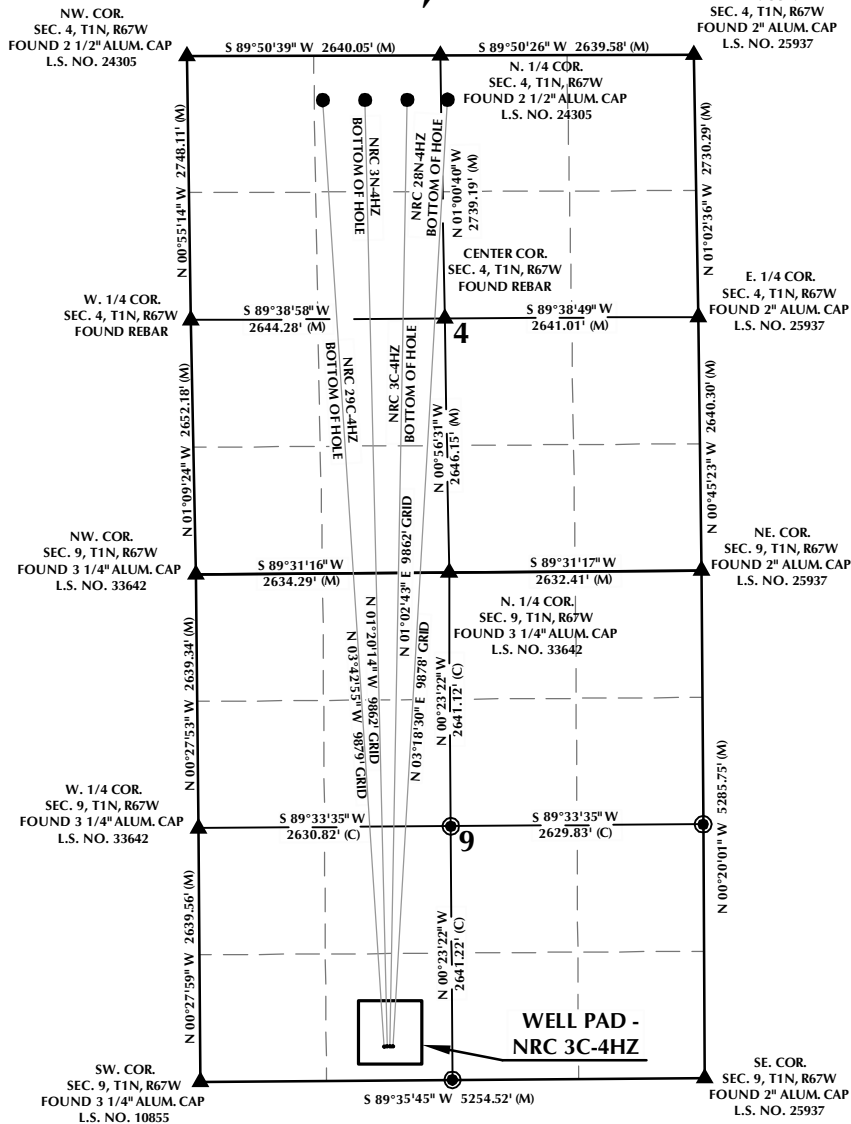


NRC 3C-4HZ T1N, R67W

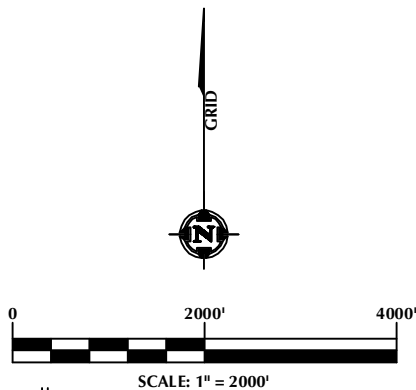


WELL NOTES:

NRC 29C-4HZ
SURFACE: 350' FSL, 1920' FWL
BOTTOM HOLE: 460' FNL, 1410' FWL
NRC 3N-4HZ
SURFACE: 350' FSL, 1950' FWL
BOTTOM HOLE: 460' FNL, 1850' FWL
NRC 3C-4HZ
SURFACE: 350' FSL, 1980' FWL
BOTTOM HOLE: 460' FNL, 2290' FWL
NRC 28N-4HZ
SURFACE: 350' FSL, 2010' FWL
BOTTOM HOLE: 460' FNL, 2570' FWL

NOTES:

- ▲ INDICATES FOUND SECTION CORNER
- INDICATES CALCULATED CORNER
- BASIS OF BEARING DERIVED FROM COLORADO COORDINATE SYSTEM 1983 NORTH ZONE UNLESS OTHERWISE NOTED.
- ALL MEASURED DISTANCES ARE GRID.
- COMBINED SCALE FACTOR: .99972585
- WELL FOOTAGES ARE MEASURED AT RIGHT ANGLES TO THE SECTION LINES.



WELL PAD - NRC 3C-4HZ

INTERFERENCE DIAGRAM
NRC 29C-4HZ, NRC 3N-4HZ,
NRC 3C-4HZ & NRC 28N-4HZ
LOCATED IN SECTIONS 4 & 9
T1N, R67W, 6TH P.M.
WELD COUNTY, COLORADO

**Kerr-McGee Oil &
Gas Onshore L.P.**
1099 18th Street
Denver, Colorado 80202



CONSULTING, LLC

SHERIDAN OFFICE
2155 North Main Street
Sheridan, Wyoming 82801
Phone 307-674-0609

LOVELAND OFFICE
1635 Foxtrail Drive, Suite 204
Loveland, Colorado 80538
Phone 970-776-4331

DRAFTED BY:	APF	CHECKED BY:	BJR
DATE DRAFTED:	5/9/13	DATE SURVEYED:	4/22/13
REVISED:	6/7/13	FILE NAME:	13-33