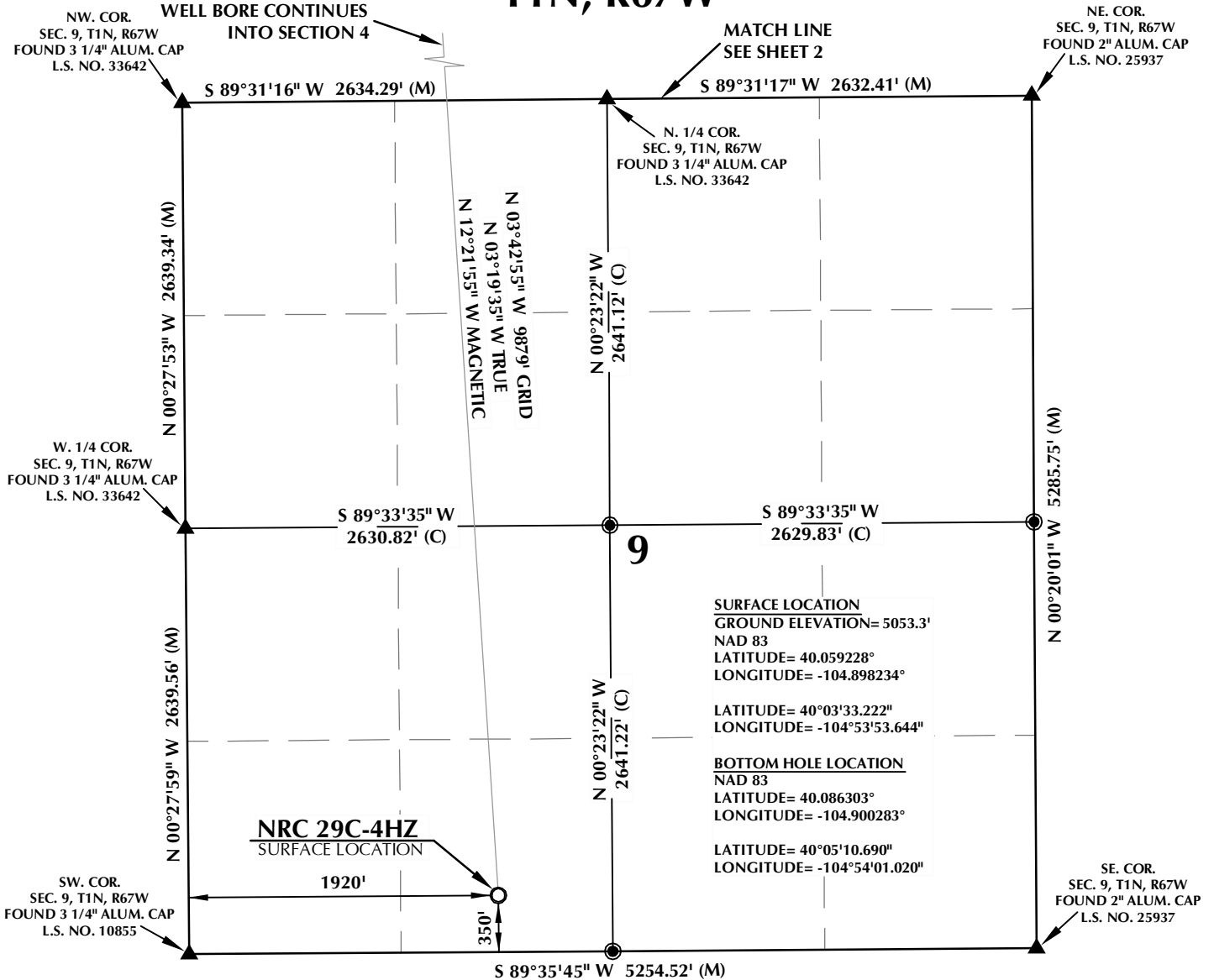


T1N, R67W

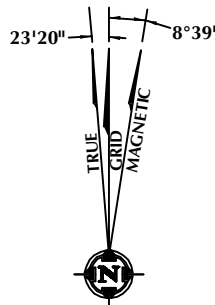


CERTIFICATE OF SURVEYOR:

THIS IS TO CERTIFY THAT THE ABOVE PLAT WAS PREPARED FROM FIELD NOTES OF ACTUAL SURVEY MADE BY ME OR UNDER MY SUPERVISION AND THAT THE SAME ARE TRUE AND CORRECT TO THE BEST OF MY KNOWLEDGE AND BELIEF. THIS CERTIFICATE DOES NOT REPRESENT A LAND SURVEY PLAT OR IMPROVEMENT SURVEY PLAT AS DEFINED BY C.S. 38-513-02 AND CANNOT BE RELIED UPON TO DETERMINE OWNERSHIP.

Benjamin J. Reenders
 BENJAMIN J. REENDERS
 PROFESSIONAL LAND SURVEYOR
 COLORADO REGISTRATION NUMBER 18306 9/24/13

NOTICE:
 ACCORDING TO COLORADO STATE LAW YOU MUST COMMENCE ANY LEGAL ACTION BASED UPON ANY DEFECT IN THIS SURVEY WITHIN THREE YEARS AFTER YOU FIRST DISCOVER SUCH DEFECT. IN NO EVENT MAY ANY ACTION BASED UPON ANY DEFECT IN THIS SURVEY BE COMMENCED MORE THAN TEN YEARS FROM THE DATE ON THE CERTIFICATION SHOWN HEREON.



NOTE:
 MAGNETIC NORTH IS CURRENT AS OF 6/7/2013.
 MAGNETIC NORTH CHANGES WEST 0°08' PER YEAR.

NOTES:

- ▲ INDICATES FOUND SECTION CORNER
- INDICATES CALCULATED CORNER
- ELEVATION BASED ON NAVD88 (GEOID09)
- BASIS OF BEARING DERIVED FROM COLORADO COORDINATE SYSTEM 1983 NORTH ZONE UNLESS OTHERWISE NOTED.
- ALL MEASURED DISTANCES ARE GRID. COMBINED SCALE FACTOR: .99972585
- OPERATOR: ROB WILSON / PDOP = 1.3
- SURFACE USE OF LOCATION IS DRY LAND CROP.
- SEE ADDENDUM TO WELL LOCATION CERTIFICATE FOR EXISTING IMPROVEMENTS WITHIN 500' OF THE WELL PAD.
- WELL FOOTAGES ARE MEASURED AT RIGHT ANGLES TO THE SECTION LINES.
- THE BOTTOM OF HOLE BEARS N03°42'55"W 9879' FROM THE SURFACE LOCATION.



SCALE: 1" = 1000'

WELL PAD - NRC 3C-4HZ

NRC 29C-4HZ
 WELL LOCATION CERTIFICATE
 350' FSL & 1920' FWL SESW (SURFACE)
 LOCATED IN SECTION 9
 460' FNL & 1410' FWL NENW (BOTTOM)
 LOCATED IN SECTION 4
 T1N, R67W, 6TH P.M.
 WELD COUNTY, COLORADO

**Kerr-McGee Oil &
 Gas Onshore L.P.**
 1099 18th Street
 Denver, Colorado 80202



CONSULTING, LLC

SHERIDAN OFFICE
 2155 North Main Street
 Sheridan, Wyoming 82801
 Phone 307-674-0609

LOVELAND OFFICE
 1635 Foxtrail Drive, Suite 204
 Loveland, Colorado 80538
 Phone 970-776-4331

DRAFTED BY:	APF	CHECKED BY:	BJR	SHEET NO:
DATE DRAFTED:	5/10/13	DATE SURVEYED:	4/22/13	1
REVISED:	9/24/13	FILE NAME:	13-33	1 OF 2

\\ANADARKO\2013\2013_33_WATTENBERG_T1_R67_SEC_8&9\PLATS\SECTION 4\NRC 3C-4HZ PLATS\NRC 3C-4HZ PLAT.dwg, 9/23/2013 3:26:37 PM, lisa