

WPX Energy Rocky Mtn LLC

RWF 34-36

API #05-045-21549-00

2619' FNL x 2598' FEL - (SWNE) SHL

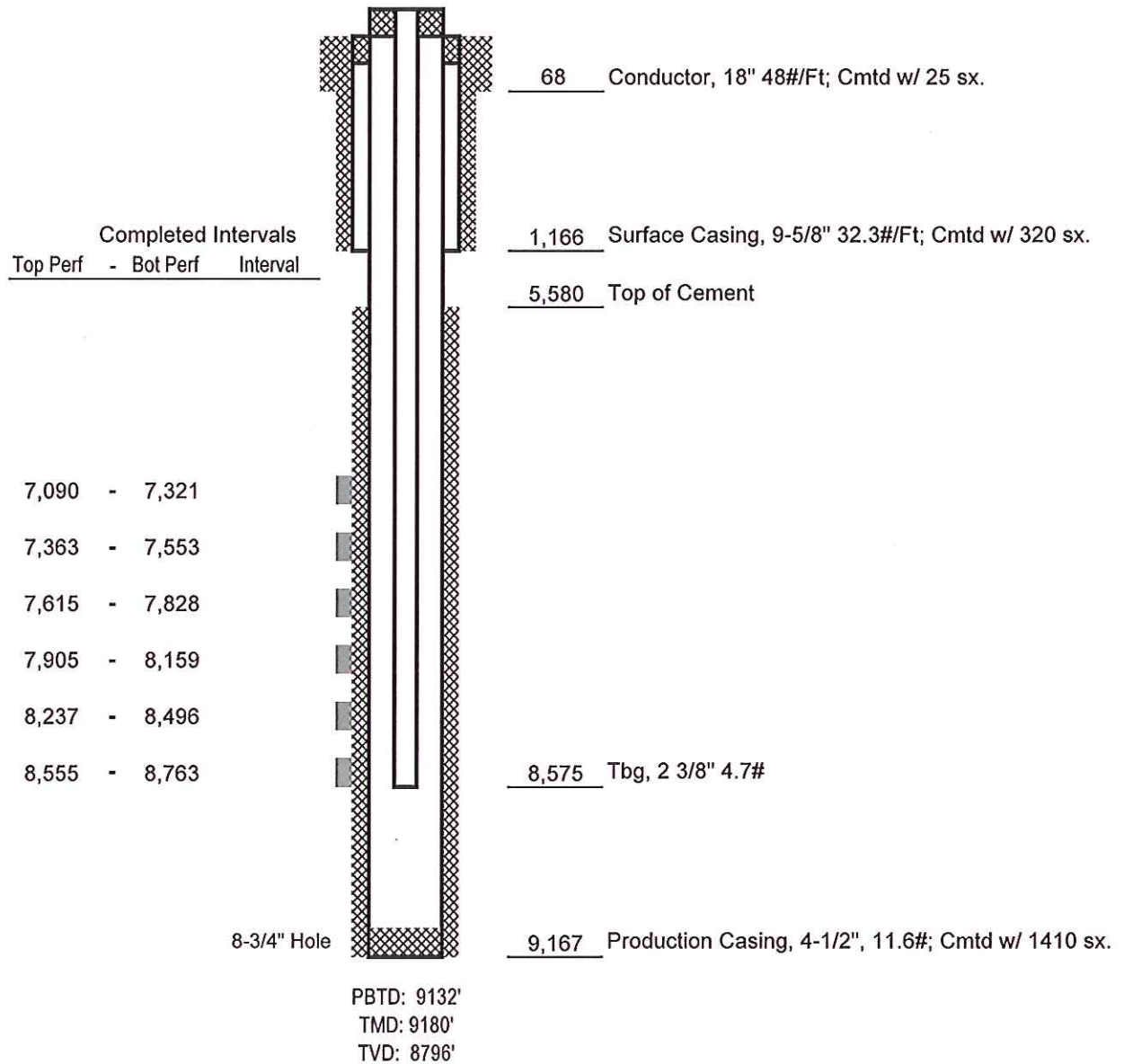
930' FSL x 1852' FEL - (SWSE) BHL

Sec. 36-T6S-R94W

Garfield County, Colorado

FINAL

DATED 10-09-13



Not to Scale