

*The Road to Excellence Starts with Safety*

The Road to Excellence Starts with Safety

Sold To #: 300721	Ship To #: 3006345	Quote #:	Sales Order #: 900541539
Customer: WPX ENERGY ROCKY MOUNTAIN LLC-EBUS		Customer Rep: Oaks, Rick	
Well Name: RWF		Well #: 34-36	API/UWI #:
Field: RULISON	City (SAP): RIFLE	County/Parish: Garfield	State: Colorado
Contractor: Nabors		Rig/Platform Name/Num: Nabors 576	
Job Purpose: Cement Surface Casing			
Well Type: Development Well		Job Type: Cement Surface Casing	
Sales Person: MAYO, MARK		Srv Supervisor: KEANE, JOHN	MBU ID Emp #: 486519

**Job Personnel**

HES Emp Name	Exp Hrs	Emp #	HES Emp Name	Exp Hrs	Emp #	HES Emp Name	Exp Hrs	Emp #
BANKS, BRENT A	6.5	371353	DEUSSEN, EDWARD Eric	6.5	485182	KEANE, JOHN Donovon	6.5	486519

**Equipment**

HES Unit #	Distance-1 way	HES Unit #	Distance-1 way	HES Unit #	Distance-1 way	HES Unit #	Distance-1 way
10567589C	60 mile	10784064	60 mile	11006314	60 mile	11259881	60 mile
11808829	60 mile						

**Job Hours**

Date	On Location Hours	Operating Hours	Date	On Location Hours	Operating Hours	Date	On Location Hours	Operating Hours
06/26/2013	6.5	1						

**TOTAL** Total is the sum of each column separately

**Job**

**Job Times**

Formation Name	Formation Depth (MD)	Top	Bottom	Called Out	Date	Time	Time Zone
Form Type			BHST	On Location	26 - Jun - 2013	04:00	MST
Job depth MD	1164. ft		Job Depth TVD	Job Started	26 - Jun - 2013	09:00	MST
Water Depth			Wk Ht Above Floor	Job Completed	26 - Jun - 2013	00:00	MST
Perforation Depth (MD)	From		To	Departed Loc	26 - Jun - 2013	00:00	MST

**Well Data**

Description	New / Used	Max pressure psig	Size in	ID in	Weight lbm/ft	Thread	Grade	Top MD ft	Bottom MD ft	Top TVD ft	Bottom TVD ft
OPEN HOLE				13.5				.	1184.	.	1184.
SURFACE CASING	Unknown		9.625	9.001	32.3		H-40	.	1164.	.	1164.

**Tools and Accessories**

Type	Size	Qty	Make	Depth	Type	Size	Qty	Make	Depth	Type	Size	Qty	Make
Guide Shoe					Packer					Top Plug	9.625	1	HES
Float Shoe					Bridge Plug					Bottom Plug			
Float Collar					Retainer					SSR plug set			
Insert Float										Plug Container	9.625	1	HES
Stage Tool										Centralizers			

**Miscellaneous Materials**

Gelling Agt		Conc		Surfactant		Conc		Acid Type		Qty		Conc	%
Treatment Fld		Conc		Inhibitor		Conc		Sand Type		Size		Qty	

**Fluid Data**

**Stage/Plug #: 1**

Fluid #	Stage Type	Fluid Name	Qty	Qty uom	Mixing Density lbm/gal	Yield ft3/sk	Mix Fluid Gal/sk	Rate bbl/min	Total Mix Fluid Gal/sk
---------	------------	------------	-----	---------	------------------------	--------------	------------------	--------------	------------------------

**Stage/Plug #: 1**

Fluid #	Stage Type	Fluid Name	Qty	Qty uom	Mixing Density lbm/gal	Yield ft3/sk	Mix Fluid Gal/sk	Rate bbl/min	Total Mix Fluid Gal/sk
---------	------------	------------	-----	---------	------------------------	--------------	------------------	--------------	------------------------

Stage/Plug #: 1									
1	Fresh Water Spacer		20.00	bbl	.	.0	.0	.4	
2	VersaCemGJ1 Lead Cement	VERSACEM (TM) SYSTEM (452010)	160.0	sacks	12.3	2.24	11.3	8	11.3
	11.3 Gal	FRESH WATER							
3	VersaCemGJ1 Tail Cement	VERSACEM (TM) SYSTEM (452010)	160.0	sacks	12.6	2.08	10.14	8	10.14
	10.14 Gal	FRESH WATER							
4	Fresh Water Displacement			bbl	.	.0	.0	10	
Calculated Values		Pressures		Volumes					
Displacement	88.2	Shut In: Instant		Lost Returns	0	Cement Slurry	127	Pad	
Top Of Cement	SURFACE	5 Min		Cement Returns	45	Actual Displacement	88.2	Treatment	
Frac Gradient		15 Min		Spacers	20	Load and Breakdown		Total Job	236
Rates									
Circulating	4	Mixing	8	Displacement	10	Avg. Job	8		
Cement Left In Pipe	Amount	43.9 ft	Reason	Shoe Joint					
Frac Ring # 1 @	ID	Frac ring # 2 @	ID	Frac Ring # 3 @	ID	Frac Ring # 4 @	ID		
The Information Stated Herein Is Correct				Customer Representative Signature					



*The Road to Excellence Starts with Safety*

Sold To #: 300721	Ship To #: 3006345	Quote #:	Sales Order #: 900541539
Customer: WPX ENERGY ROCKY MOUNTAIN LLC-EBUS	Customer Rep: Oaks, Rick		
Well Name: RWF	Well #: 34-36	API/UWI #:	
Field: RULISON	City (SAP): RIFLE	County/Parish: Garfield	State: Colorado
Legal Description:			
Lat:		Long:	
Contractor: Nabors	Rig/Platform Name/Num: Nabors 576		
Job Purpose: Cement Surface Casing	Ticket Amount:		
Well Type: Development Well	Job Type: Cement Surface Casing		
Sales Person: MAYO, MARK	Srv Supervisor: KEANE, JOHN	MBU ID Emp #: 486519	

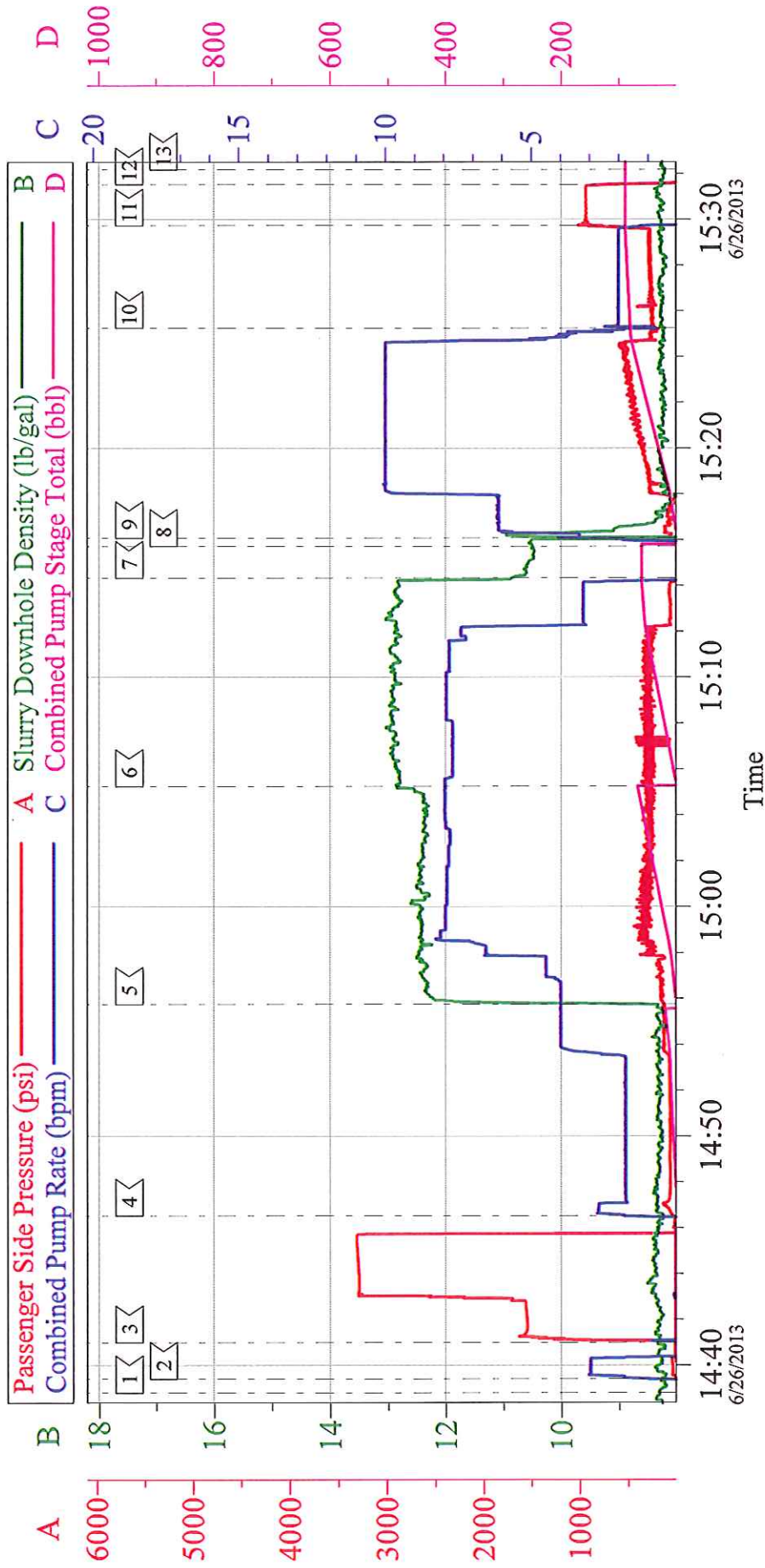
Activity Description	Date/Time	Cht #	Rate bbl/min	Volume bbl		Pressure psig		Comments
				Stage	Total	Tubing	Casing	
Call Out	06/26/2013 04:00							
Pre-Convoy Safety Meeting	06/26/2013 06:45							WITH HES
Arrive At Loc	06/26/2013 09:00							RIG PULLING DRILL PIPE UPON HES ARRIVAL
Assessment Of Location Safety Meeting	06/26/2013 09:10							WITH HES
Pre-Rig Up Safety Meeting	06/26/2013 10:50							WITH HES
Rig-Up Equipment	06/26/2013 11:00							
Pre-Job Safety Meeting	06/26/2013 14:20							WITH HES, WPX, AND NABORS 576
Start Job	06/26/2013 14:38							TP 1164.7 FT, TD 1184 FT, HOLE 13.5 IN, SHOE 43.90 FT, MWT 9.2 LB/GAL, CSG 9.625 32.3 LB/FT H-40
Pump Water	06/26/2013 14:39		2	2			75.0	FILL LINES
Test Lines	06/26/2013 14:40							LOW TEST AT 1450 PSI, HIGH TEST AT 3286 PSI, PRESSURE HOLDING
Pump Spacer	06/26/2013 14:46		4	20			132.0	FRESH WATER
Pump Lead Cement	06/26/2013 14:55		8	67			320.0	MIXED AT 12.3 LB/GAL, 160 SKS, 2.38 FT3/SK, 13.75 GAL/SK, DENSITY VERIFIED WITH PRESSURIZED MUD SCALES
Activity Description	Date/Time	Cht	Rate bbl/min	Volume bbl		Pressure psig		Comments

		#		Stage	Total	Tubing	Casing	
Pump Tail Cement	06/26/2013 15:05		8	60			258.0	MIXED AT 12.8 LB/GAL, 160 SKS, 2.11 FT3/SK, 11.75 GAL/SK, DENSITY VERIFIED WITH PRESSURIZED MUD SCALES
Shutdown	06/26/2013 15:14						220.0	
Drop Plug	06/26/2013 15:15							PLUG LAUNCHED
Pump Displacement	06/26/2013 15:16		10	78			548.0	FRESH WATER
Slow Rate	06/26/2013 15:25		2	10			255.0	SLOWED AT 78 BBL AWAY
Bump Plug	06/26/2013 15:29						280.0	PLUG BUMPED AT CALCULATED DISPLACEMENT
Check Floats	06/26/2013 15:31						920.0	FLOATS HOLDING, .5 BBL RETURNED TO THE TRUCK
End Job	06/26/2013 15:32							GOOD CIRCULATION THROUGHOUT THE JOB PIPE WAS STATIC THROUGHOUT THE JOB, NO ADD HOURS CHARGED, NO DERRICK CHARGE, 45 BBL CEMENT CIRCULATED TO SURFACE, 80 LBS OF SUGAR USED BY RIG
Post-Job Safety Meeting (Pre Rig-Down)	06/26/2013 15:40							WITH HES
Rig-Down Equipment	06/26/2013 15:45							
Pre-Convoy Safety Meeting	06/26/2013 16:15							WITH HES
Crew Leave Location	06/26/2013 16:30							
Comment	06/26/2013 16:31							THANKS FOR USING HALLIBURTON, JOHN KEANE AND CREW



# WPX - RWF-34-36

9.625 IN SURFACE



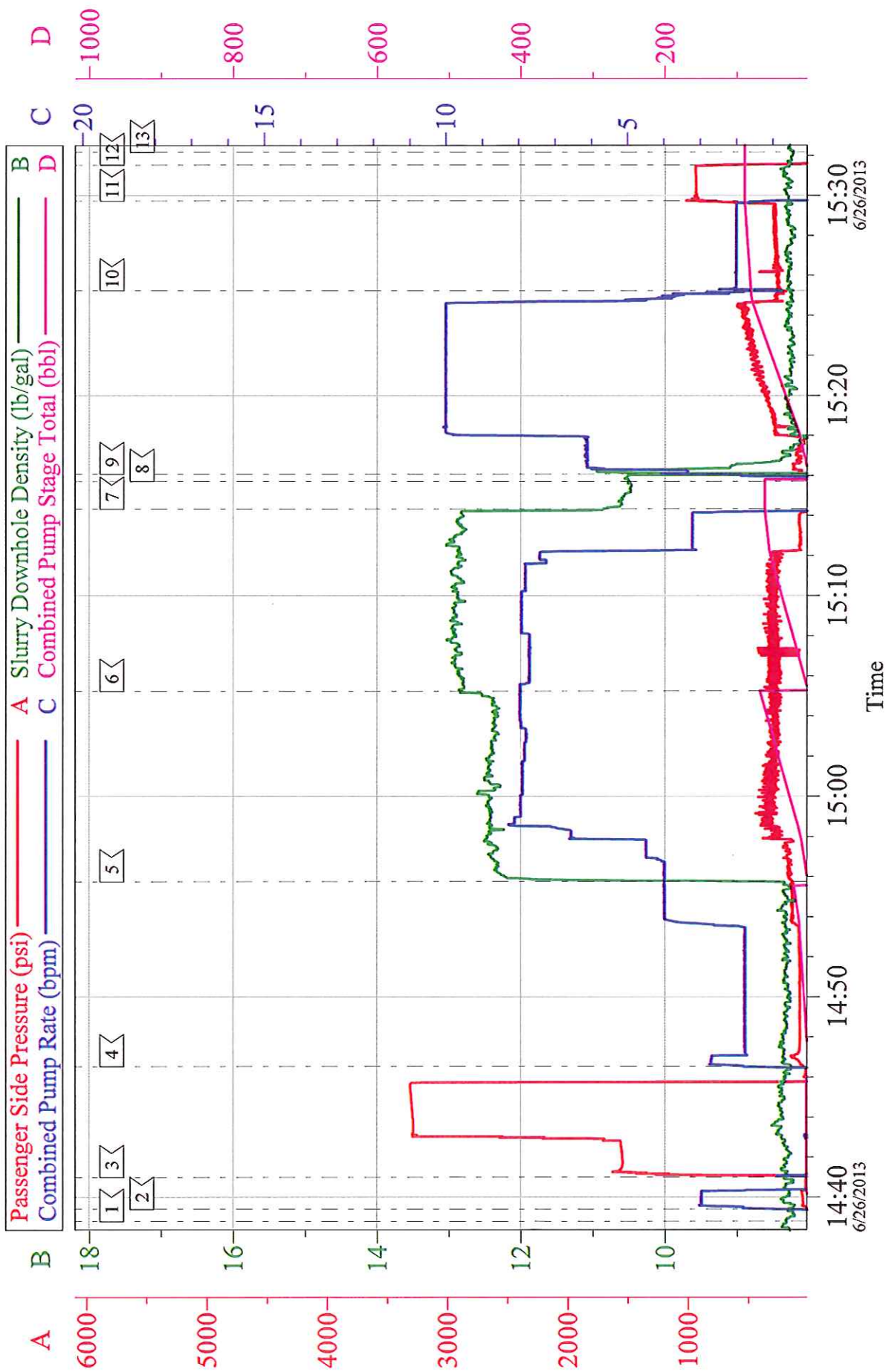
## Local Event Log

1 START JOB	14:38:48	2 FILL LINES	3 TEST LINES	14:40:59
4 PUMP WATER SPACER	14:46:32	5 PUMP LEAD CEMENT	6 PUMP TAIL CEMENT	15:05:14
7 SHUTDOWN	15:14:19	8 DROP TOP PLUG	9 PUMP DISPLACEMENT	15:16:04
10 SLOW RATE	15:25:14	11 BUMP PLUG	12 CHECK FLOATS	15:31:32
13 END JOB	15:32:11			

Customer: WPX	Job Date: 26-Jun-2013	Sales Order #: 900541539
Well Description: RWF-34-36	Job Type: SURFACE	ADC Used: YES
Company Rep: RICK OAKS	Cement Supervisor: JOHN KEANE	Elite #3: BRENT BANKS

# WPX - RWF-34-36

## 9.625 IN SURFACE



Customer: WPX	Job Date: 26-Jun-2013	Sales Order #: 900541539
Well Description: RWF-34-36	Job Type: SURFACE	ADC Used: YES
Company Rep: RICK OAKS	Cement Supervisor: JOHN KEANE	Elite #3: BRENT BANKS