

WPX Energy Rocky Mtn LLC

RWF 44-36

API #05-045-21548-00

2613' FNL x 2594' FEL - (SWNE) SHL

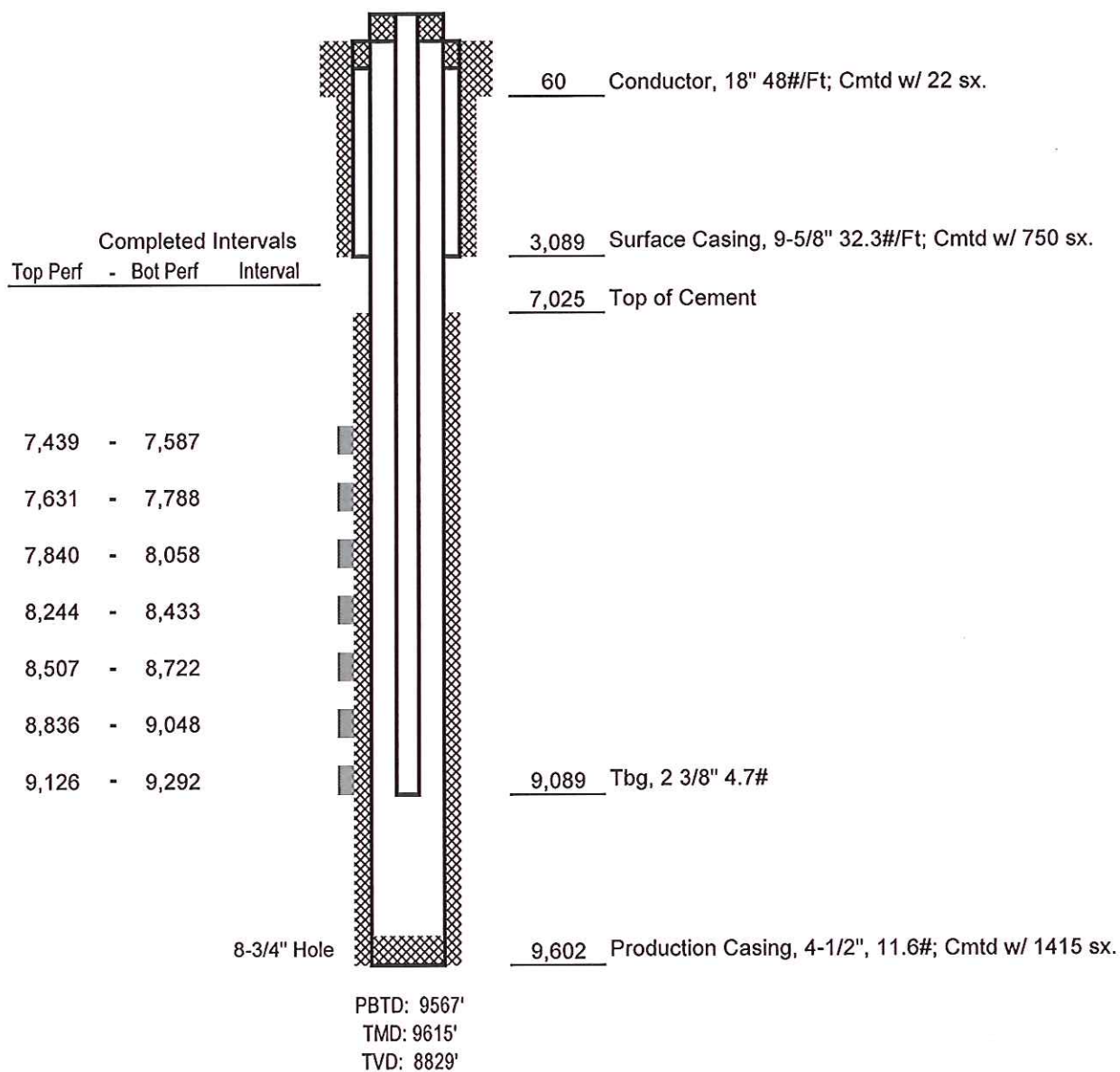
364' FSL x 721' FEL - (SESE) BHL

Sec. 36-T6S-R94W

Garfield County, Colorado

FINAL

DATED 10-31-13



Not to Scale