

The Road to Excellence Starts with Safety

Sold To #: 300721	Ship To #: 3004211	Quote #:	Sales Order #: 900516060
Customer: WPX ENERGY ROCKY MOUNTAIN LLC-EBUS		Customer Rep: Hartl, Al	
Well Name: RWF	Well #: 44-36	API/UWI #:	
Field: RULISON	City (SAP): RIFLE	County/Parish: Garfield	State: Colorado
Contractor: Nabors		Rig/Platform Name/Num: Nabors576	
Job Purpose: Cement Surface Casing			
Well Type: Development Well		Job Type: Cement Surface Casing	
Sales Person: MAYO, MARK		Srv Supervisor: ANDREWS, ANTHONY	MBU ID Emp #: 321604

Job Personnel

HES Emp Name	Exp Hrs	Emp #	HES Emp Name	Exp Hrs	Emp #	HES Emp Name	Exp Hrs	Emp #
ANDERSON, ADAM S	9	456683	ANDREWS, ANTHONY Michael	9	321604	DEUSSEN, EDWARD Eric	2	485182
EICKHOFF, ROBERT Edward	9	495311						

Equipment

HES Unit #	Distance-1 way	HES Unit #	Distance-1 way	HES Unit #	Distance-1 way	HES Unit #	Distance-1 way

Job Hours

Date	On Location Hours	Operating Hours	Date	On Location Hours	Operating Hours	Date	On Location Hours	Operating Hours
6/16/13	9.5	3.5						

TOTAL Total is the sum of each column separately

Job				Job Times			
Formation Name	Formation Depth (MD)	Top	Bottom	Date	Time	Time Zone	
				Called Out	16 - Jun - 2013	04:30	MST
				On Location	16 - Jun - 2013	09:00	MST
Form Type		BHST		Job Started	16 - Jun - 2013	15:09	MST
Job depth MD	3100. ft	Job Depth TVD	3100. ft	Job Completed	16 - Jun - 2013	16:45	MST
Water Depth		Wk Ht Above Floor	4. ft	Departed Loc	16 - Jun - 2013	18:30	MST
Perforation Depth (MD)	From	To					

Well Data

Description	New / Used	Max pressure psig	Size in	ID in	Weight lbm/ft	Thread	Grade	Top MD ft	Bottom MD ft	Top TVD ft	Bottom TVD ft

Tools and Accessories

Type	Size	Qty	Make	Depth	Type	Size	Qty	Make	Depth	Type	Size	Qty	Make
Guide Shoe					Packer					Top Plug			
Float Shoe					Bridge Plug					Bottom Plug			
Float Collar					Retainer					SSR plug set			
Insert Float										Plug Container			
Stage Tool										Centralizers			

Miscellaneous Materials

Gelling Agt	Conc	Surfactant	Conc	Acid Type	Qty	Conc	%
Treatment Fld	Conc	Inhibitor	Conc	Sand Type	Size	Qty	

Fluid Data

Stage/Plug #: 1											
Fluid #	Stage Type	Fluid Name	Qty	Qty uom	Mixing Density lbm/gal	Yield ft ³ /sk	Mix Fluid Gal/sk	Rate bbl/min	Total Mix Fluid Gal/sk		

Stage/Plug #: 1											
Fluid #	Stage Type	Fluid Name	Qty	Qty uom	Mixing Density uom	Yield uom	Mix Fluid uom	Rate uom	Total Mix Fluid uom		

HALLIBURTON**Cementing Job Summary**

Stage/Plug #: 1									
Fluid #	Stage Type	Fluid Name	Qty	Qty uom	Mixing Density lbm/gal	Yield ft ³ /sk	Mix Fluid Gal/sk	Rate bbl/min	Total Mix Fluid Gal/sk
1	Fresh Water Spacer		20.00	bbl	.	.0	.0	.0	
2	VersaCemGJ1 Lead Cement	VERSACEM (TM) SYSTEM (452010)	585.0	sacks	12.3	2.24	11.3		11.3
3	VersaCemGJ1 Tail Cement	VERSACEM (TM) SYSTEM (452010)	165.0	sacks	12.6	2.08	10.14		10.14
4	Fresh Water Displacement		239.00	bbl	.	.0	.0	.0	
Calculated Values		Pressures		Volumes					
Displacement	238.5	Shut In: Instant		Lost Returns	N	Cement Slurry	294.6	Pad	
Top Of Cement	SURFACE	5 Min		Cement Returns	80	Actual Displacement	238.5	Treatment	
Frac Gradient		15 Min		Spacers	20	Load and Breakdown		Total Job	553.1
Rates									
Circulating	RIG	Mixing	8	Displacement	10-2	Avg. Job	8		
Cement Left In Pipe	Amount	44.1 ft	Reason	Shoe Joint					
Frac Ring # 1 @	ID	Frac ring # 2 @	ID	Frac Ring # 3 @	ID	Frac Ring # 4 @	ID		
The Information Stated Herein Is Correct				Customer Representative Signature					

The Road to Excellence Starts with Safety

Sold To #: 300721	Ship To #: 3004211	Quote #:	Sales Order #: 900516060
Customer: WPX ENERGY ROCKY MOUNTAIN LLC-EBUS		Customer Rep: Hartl, Al	
Well Name: RWF	Well #: 44-36	API/UWI #:	
Field: RULISON	City (SAP): RIFLE	County/Parish: Garfield	State: Colorado
Legal Description:			
Lat:		Long:	
Contractor: Nabors		Rig/Platform Name/Num: Nabors576	
Job Purpose: Cement Surface Casing			Ticket Amount:
Well Type: Development Well		Job Type: Cement Surface Casing	
Sales Person: MAYO, MARK		Srv Supervisor: ANDREWS, ANTHONY	MBU ID Emp #: 321604

Activity Description	Date/Time	Cht #	Rate bbl/min	Volume bbl		Pressure psig		Comments
				Stage	Total	Tubing	Casing	
Call Out	06/16/2013 04:30							
Pre-Convoy Safety Meeting	06/16/2013 07:00							
Crew Leave Yard	06/16/2013 07:15							
Arrive At Loc	06/16/2013 09:00							
Assessment Of Location Safety Meeting	06/16/2013 09:05							
Other	06/16/2013 13:15							SPOT EQUIPMENT
Pre-Rig Up Safety Meeting	06/16/2013 13:20							
Rig-Up Equipment	06/16/2013 13:30							
Pre-Job Safety Meeting	06/16/2013 14:45							
Start Job	06/16/2013 15:09							TD: 3100 TP: 3085 SJ: 44.1 MW: 10.1 9 5/8" 32.3 & 36#/FT CSG IN 13 1/2" OH
Test Lines	06/16/2013 15:11							3000 PSI TEST
Pump Spacer	06/16/2013 15:14		4	20			110.0	FRESH H2O SPACER
Pump Lead Cement	06/16/2013 15:21		8	233.4			160.0	585 SKS @ 12.3 PPG 2.24 YLD 11.3 GAL/SK H2O
Pump Tail Cement	06/16/2013 16:01		8	61.1			263.0	165 SKS @ 12.6 PPG 2.08 YLD 10.14 GAL/SK H2O
Shutdown	06/16/2013 16:11							

Sold To #: 300721

Ship To #: 3004211

Quote #:

Sales Order #: 900516060

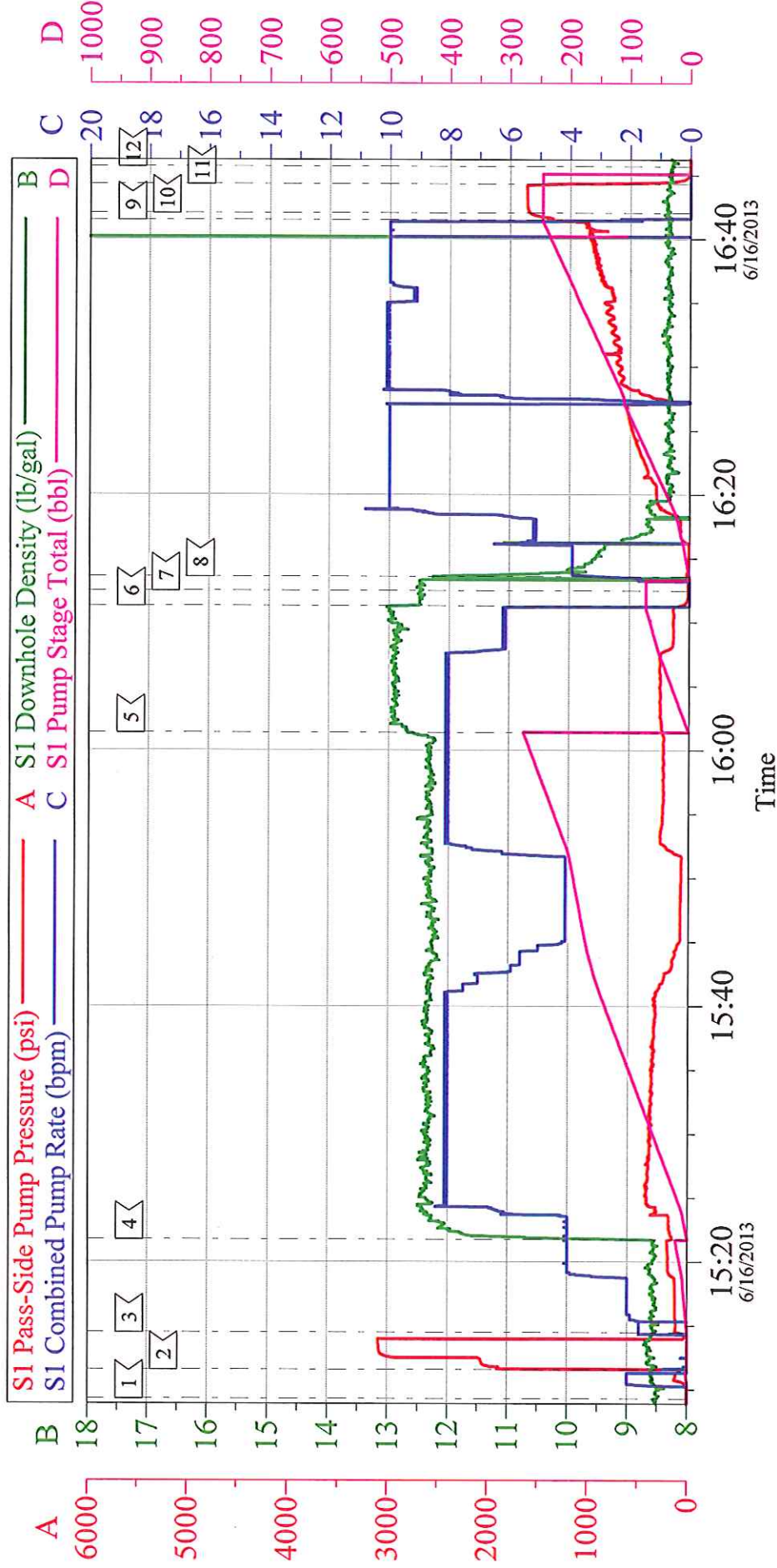
SUMMIT Version: 7.3.0081

Saturday, June 22, 2013 03:37:00

Activity Description	Date/Time	Cht #	Rate bbl/min	Volume bbl		Pressure psig		Comments
				Stage	Total	Tubing	Casing	
Drop Plug	06/16/2013 16:12							WASH UP ON TOP OF PLUG, PLUG AWAY
Pump Displacement	06/16/2013 16:13		10		238.5		328.0	FRESH H2O DISPLACEMENT
Slow Rate	06/16/2013 16:41		2	228			1417.0	
Bump Plug	06/16/2013 16:42		2	238.5			1601.0	
Check Floats	06/16/2013 16:44							
End Job	06/16/2013 16:45							PLUG BUMPED AT CALCULATED DISPLACEMENT. FLOATS HELD. CIRCULATED 80 BBLS CEMENT TO SURFACE. PIPE WAS LEFT STATIC THROUGHOUT JOB. NO ADD HOURS CHARGED. USED 20# SUGAR.
Post-Job Safety Meeting (Pre Rig-Down)	06/16/2013 16:50							
Rig-Down Equipment	06/16/2013 17:00							
Pre-Convoy Safety Meeting	06/16/2013 18:15							
Crew Leave Location	06/16/2013 18:30							THANK YOU FOR CHOOSING HALLIBURTON CEMENTING OF GRAND JUNCTION, COLORADO ANTHONY ANDREWS AND CREW

WPX - RWF 44-36

9 5/8" SURFACE



Local Event Log					
Intersection		SPPP	Intersection		SPPP
1	START JOB	15:09:16 3.000	2	TEST LINES	15:11:33 58.16
4	PUMP LEAD CEMENT	15:21:44 159.5	5	PUMP TAIL CEMENT	16:01:21 263.5
7	DROP PLUG	16:12:27 11.00	8	PUMP DISPLACEMENT	16:13:32 22.96
10	BUMP PLUG	16:42:02 1601	11	CHECK FLOATS	16:44:18 779.1
			3	PUMP SPACER	15:14:27 86.52
			6	SHUTDOWN	16:11:16 89.30
			9	SLOW RATE	16:41:29 1417
			12	END JOB	16:45:41 5.000

Customer: WPX	Job Date: 16-Jun-2013	Sales Order #: 900516060
Well Description: RWF 44-36	Job Type: SURFACE	ADC Used: YES
Company Rep: AL HARTL	Cement Supervisor: ANTHONY ANDREWS	Elite #: ADAM ANDERSON