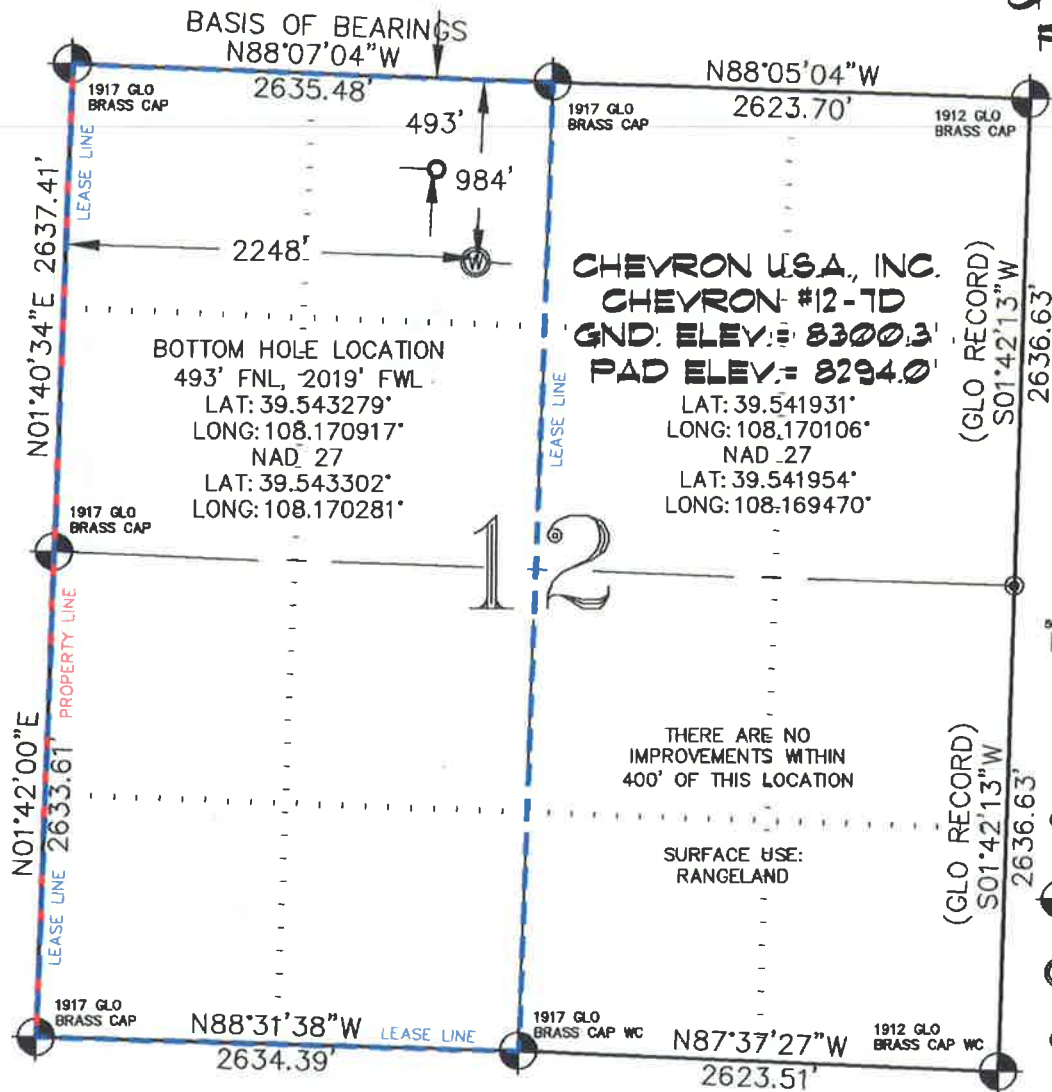


SEC. 12, T. 6 S., R. 97 W. OF THE 6TH P.M. Chevron C12-697
Pad Location



500' 0 1000'
GRAPHIC SCALE IN FEET
1 INCH = 1000 FEET

-LEGEND-

- SECTION CORNER LOCATION
BASED ON GLO RECORD
INFORMATION
- FIELD SURVEYED SECTION
CORNER LOCATIONS
- FIELD SURVEYED PAD
LOCATION
- CALCULATED BOTTOM
HOLE LOCATION

THIS WELL LOCATION PLAT WAS PREPARED FOR BERRY PETROLEUM COMPANY, TO LOCATE THE CHEVRON #12-7D WELL, 984 FEET FROM THE NORTH LINE AND 2248 FEET FROM THE WEST LINE IN THE NE 1/4 NW 1/4 SECTION 12, T. 6 S., R. 97 W. OF THE 6TH P.M. IN GARFIELD COUNTY, COLORADO.

REFERENCE NOTES

- 1) T. 6 S., R. 97 W., 6TH P.M. GLO PLAT.
- 2) U.S.G.S. QUAD: CIRLCE DOT GULCH, CO
- 3) ELEVATIONS BASED ON N.A.V.D. 1988
- 4) LATITUDES AND LONGITUDES ARE BASED ON NAD 83, COLORADO CENTRAL ZONE.
- 5) GPS OPERATOR ROBERT WOOD, OBSERVED A PDOP OF 2.2.
- 6) ALL GPS OBSERVATIONS ARE IN COMPLIANCE WITH COGCC RULE NO. 215.
- 7) SURFACE AND BOTTOM HOLE LOCATIONS ARE MEASURED 90° FROM SECTION LINES.

SURVEYOR'S CERTIFICATE

I, George R. Bauer, a Professional Land Surveyor in the State of Colorado do hereby certify that this Survey was made under my direct supervision, and that this Plat represents said Survey.



COLORADO P.L.S. 27925



CONSTRUCTION SURVEYS, INC.
0012 SUNRISE BLVD.
SILT, CO 81652
(970) 876-5753

VIEW: 1B

SURVEYED: 07/06/07	SCALE: 1" = 1000'
DRAFTED: 01/19/10	DWG: BERRY\CHEV_C12-697
CHECKED: 01/20/10	SHEET: 1 of 11