

#### LAND SURVEYOR'S CERTIFICATION

LAMP, RYNEARSON & ASSOCIATES, INC., OF FT. COLLINS, COLORADO HAS IN ACCORDANCE WITH A REQUEST FROM COLLIN RICHARDSON FOR MINERAL RESOURCES, INC., DETERMINED THE SURFACE LOCATION OF THE WELL DESIGNATED AS CS-SCOTT 4-1-12 TO BE 340' FROM THE SOUTH LINE AND 2000' FROM THE EAST LINE OF SECTION 36, TOWNSHIP 6 NORTH, RANGE 66 WEST OF THE 6TH P.M., WELD COUNTY, COLORADO.

DAVID JOHN BERGLUND  
 COLORADO PLS 38199

DATE OF SURVEY: 8/19/2010 (SECTION CONTROL)  
 DATE OF SURVEY: 3/5/2012 (WELL LOCATION)



500 1000 2000  
 1"=1000' US SURVEY FEET

#### LEGEND

- ALLOT CORNER
- BOTTOM HOLE
- PROPOSED WELL
- A.C. ALUMINUM CAP
- R.B. RANGE BOX



**LAMP RYNEARSON  
 & ASSOCIATES**

4715 Innovation Drive 970.226.0342 | P  
 Fort Collins, CO 80525 970.226.0879 | F  
 www.LRA-Inc.com

Proposed Well Location Exhibit  
 CS-Scott 4-1-12  
 1 of 3

drawn by  
 SSZ

date  
 4/23/13

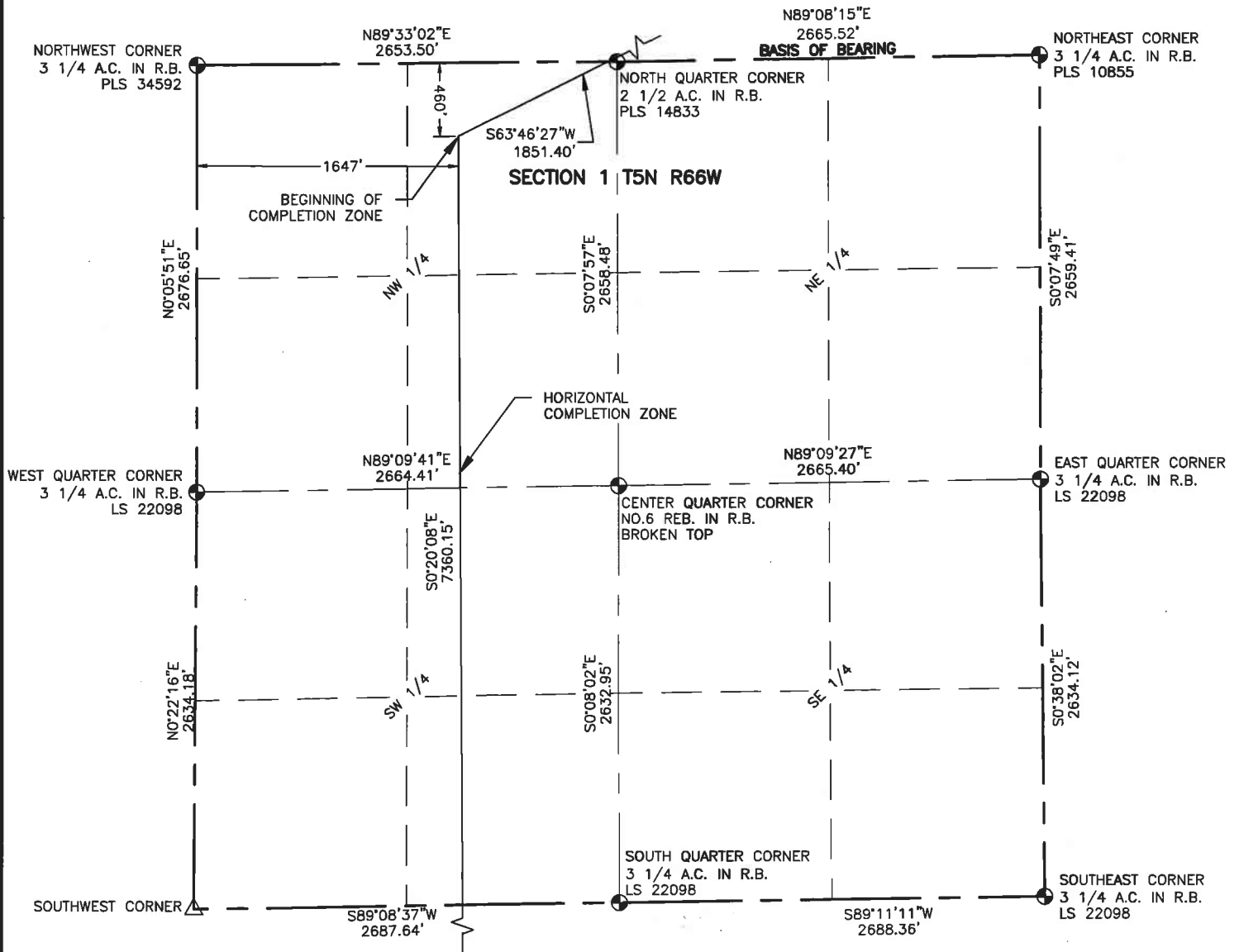
cogcc id  
 430474

project - task number  
 0210012.00

book and page  
 MR-01 5-6

surface - location  
 SW/4 SE/4 SEC 36 T6N R66W

path\filename P:\Engineering\0210012 MRI C Street\DRAWINGS\EXHIBITS\0210012EXWPH.dwg



#### NOTES:

DISTANCES ARE MEASURED PERPENDICULAR TO NEAREST SECTION LINE AND ARE SHOWN ON THE SAME SIDE OF THE SECTION LINE WHERE THE WELL IS LOCATED.

THIS MAP DOES NOT REPRESENT A MONUMENTED BOUNDARY SURVEY.

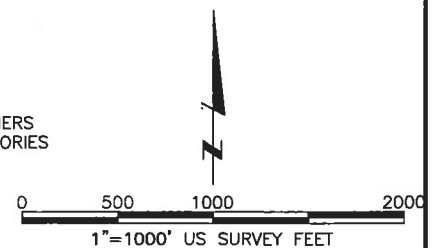
#### BASIS OF BEARING:

THE NORTH LINE OF THE NORTHEAST QUARTER OF SECTION 1-T5N-R66W BEARS N89°08'15"E BETWEEN THE NORTH QUARTER CORNER OF SECTION 1 MONUMENTED WITH A 2 1/2" A.C. IN R.B. "PLS 14833" AND THE NORTHEAST CORNER OF SECTION 1 MONUMENTED WITH A 3 1/4" A.C. IN R.B. STAMPED "PLS 10855" BASED ON THE COLORADO NORTH 0501 COORDINATE SYSTEM.

ELEVATIONS ARE NAVD 88, AS OBSERVED FROM GPS OBSERVATIONS

#### LEGEND

- ALIQUOT CORNER
- ⊕ BOTTOM HOLE
- △ COMPUTED ALIQUOT CORNERS FROM MONUMENT ACCESSORIES
- PROPOSED WELL
- A.C. ALUMINUM CAP
- R.B. RANGE BOX



**LAMP RYNEARSON  
& ASSOCIATES**

4715 Innovation Drive 970.226.0342 | P  
Fort Collins, CO 80525 970.226.0879 | F  
www.LRA-Inc.com

Proposed Well Location Exhibit  
CS-Scott 4-1-12  
2 of 3

drawn by  
SSZ

date  
4/23/13

cogccc id  
430474

project - task number  
0210012.00

book and page  
MR-01 5-6

surface - location  
SW/4 SE/4 SEC 36 T6N R66W

path\filename P:\\_Engineering\0210012 MRI C Street\DRAWINGS\EXHIBITS\0210012EXWPHA.dwg

