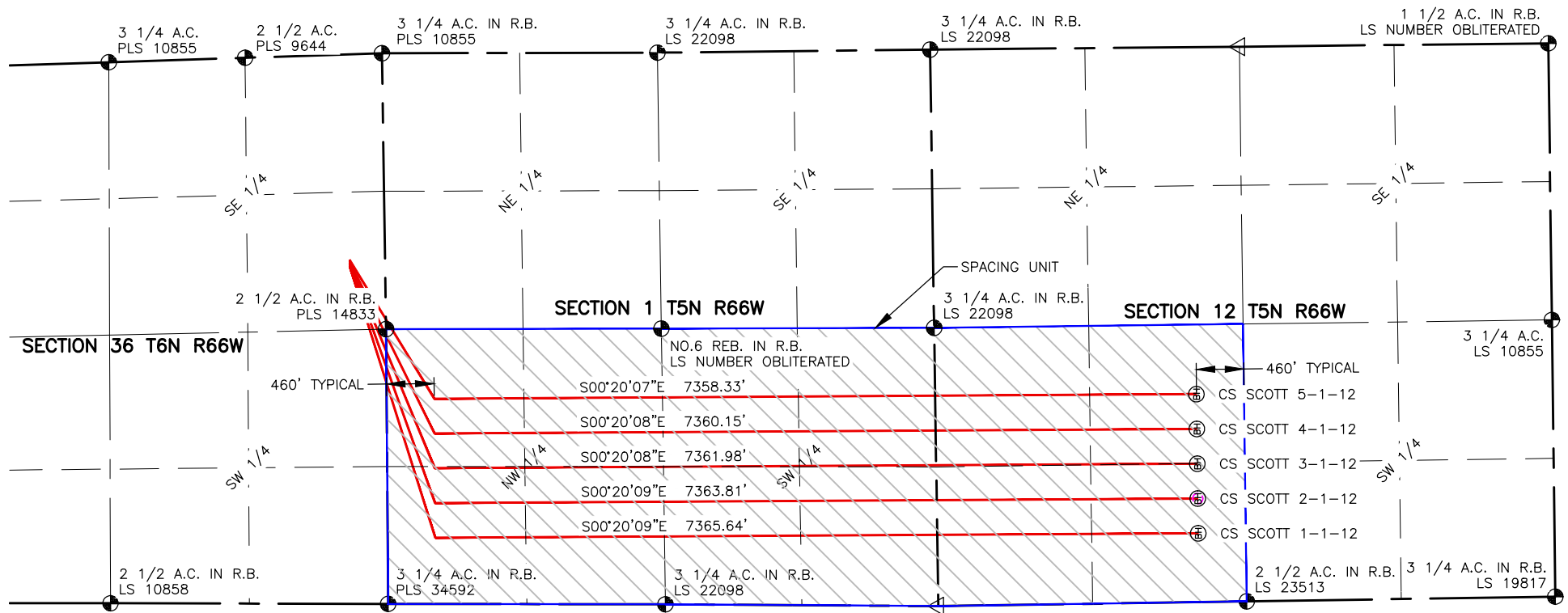


NAME: SCOTT SPACING UNIT: NW/4 & SW/4 SEC 1, T5N R66W NW/4 SEC 12, T5N, R66W UNIT ACREAGE: 480

WELL NAME	SURFACE LOCATION				BEGIN HORIZONTAL COMPLETION ZONE				END HORIZONTAL COMPLETION ZONE			
	DIST.	DIR.	DIST.	DIR.	DIST.	DIR.	DIST.	DIR.	DIST.	DIR.	DIST.	DIR.
CS-SCOTT 1-1-12	341'	FSL	2048'	FEL	459'	FNL	639'	FWL	2520'	FNL	665'	FWL
CS-SCOTT 2-1-12	341'	FSL	2032'	FEL	460'	FNL	975'	FWL	2521'	FNL	1001'	FWL
CS-SCOTT 3-1-12	340'	FSL	2016'	FEL	460'	FNL	1311'	FWL	2521'	FNL	1337'	FWL
CS-SCOTT 4-1-12	340'	FSL	2000'	FEL	460'	FNL	1647'	FWL	2522'	FNL	1673'	FWL
CS-SCOTT 5-1-12	340'	FSL	1984'	FEL	460'	FNL	1983'	FWL	2522'	FNL	2009'	FWL



**LAMP RYNEARSON**  
& ASSOCIATES

4715 Innovation Drive 970.226.0342 | P  
Fort Collins, CO 80525 970.226.0879 | F  
www.LRA-Inc.com

Planned Spacing Unit Exhibit  
C Street Directional Project  
Scott Spacing Unit

#### LEGEND

- ALIQUOT CORNER
- ⊕ BOTTOM HOLE
- COMPUTED FROM GLO RECORDS



A.C. ALUMINUM CAP  
R.B. RANGE BOX

0 1500

drawn by  
SSZ

date  
4/24/13

cogcc id  
430474

project - task number  
0210012.00-502

book and page  
MR-01 5-6

surface - location  
SW/4 SE/4 SEC 36 T6N R66W

path\filename P:\\_Engineering\0210012 MRI C Street\DRAWINGS\EXHIBITS\0210012PSUE-SCOTT.dwg



07/01/2013

VIA ELECTRONIC TRANSMITTAL

Colorado Oil and Gas Conservation Commission  
Attn: Matt Lepore, Director  
1120 Lincoln Street, Suite 801  
Denver, CO 80203

RE: 30-Day Affidavit and Certification Letter

CS-Scott #1-1-12 Well: 341' FSL, 2048' FEL, Sec. 36-T6N-R66W, Weld County, Colorado  
CS-Scott #2-1-12 Well: 341' FSL, 2032' FEL, Sec. 36-T6N-R66W, Weld County, Colorado  
CS-Scott #3-1-12 Well: 340' FSL, 2016' FEL, Sec. 36-T6N-R66W, Weld County, Colorado  
CS-Scott #4-1-12 Well: 340' FSL, 2000' FEL, Sec. 36-T6N-R66W, Weld County, Colorado  
CS-Scott #5-1-12 Well: 340' FSL, 1984' FEL, Sec. 36-T6N-R66W, Weld County, Colorado

Dear Mr. Lepore,

Mineral Resources, Inc. (MRI) hereby certifies that thirty (30) day notice has been given to all owners in the proposed wellbore spacing unit in accordance with Rule 318A.e(6). The notices were sent on 05/01/13. MRI has received no objections to the subject well locations, proposed spacing units, or additional producing information from any owner as described in C.R.S. §34-60-103(7). The thirty (30) day objection period has expired. MRI respectfully requests that the Director approve the wells. Should you have any questions or concerns please contact the undersigned at 303-216-0703.

Sincerely,

Clayton L. Doke  
Senior Engineer  
Peterson Energy, a Division of IPT  
Consultants to Mineral Resources, Inc