

NOTES:

DISTANCES ARE MEASURED PERPENDICULAR TO NEAREST SECTION LINE AND ARE SHOWN ON THE SAME SIDE OF THE SECTION LINE WHERE THE WELL IS LOCATED.

THIS MAP DOES NOT REPRESENT A MONUMENTED BOUNDARY SURVEY.

BASIS OF BEARING:

THE NORTH LINE OF THE NORTHEAST QUARTER OF SECTION 36-T6N-R66W BEARS S89°47'18"E BETWEEN THE NORTH QUARTER CORNER OF SECTION 36 MONUMENTED WITH 3 1/4" A.C. STAMPED "PLS 10855" AND THE NORTHEAST CORNER OF SECTION 36 MONUMENTED WITH A 2 1/2" A.C. STAMPED "LS 19585" BASED ON THE COLORADO NORTH 0501 STATE PLANE COORDINATE SYSTEM.

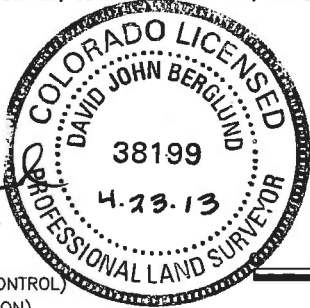
ELEVATIONS ARE BASED ON NAVD 88, AS OBSERVED FROM GPS OBSERVATIONS

LEGEND

- ALIQUOT CORNER
- ⊙ BOTTOM HOLE
- PROPOSED WELL
- A.C. ALUMINUM CAP
- R.B. RANGE BOX

LAND SURVEYOR'S CERTIFICATION

LAMP, RYNEARSON & ASSOCIATES, INC., OF FT. COLLINS, COLORADO HAS IN ACCORDANCE WITH A REQUEST FROM COLLIN RICHARDSON FOR MINERAL RESOURCES, INC., DETERMINED THE SURFACE LOCATION OF THE WELL DESIGNATED AS CS-KINKADE 1-1-12 TO BE 339' FROM THE SOUTH LINE AND 1920' FROM THE EAST LINE OF SECTION 36, TOWNSHIP 6 NORTH, RANGE 66 WEST OF THE 6TH P.M., WELD COUNTY, COLORADO.



DAVID JOHN BERGLUND
 COLORADO PLS 38199
 DATE OF SURVEY: 8/19/2010 (SECTION CONTROL)
 DATE OF SURVEY: 3/5/2012 (WELL LOCATION)

500 1000 2000
 1"=1000' US SURVEY FEET



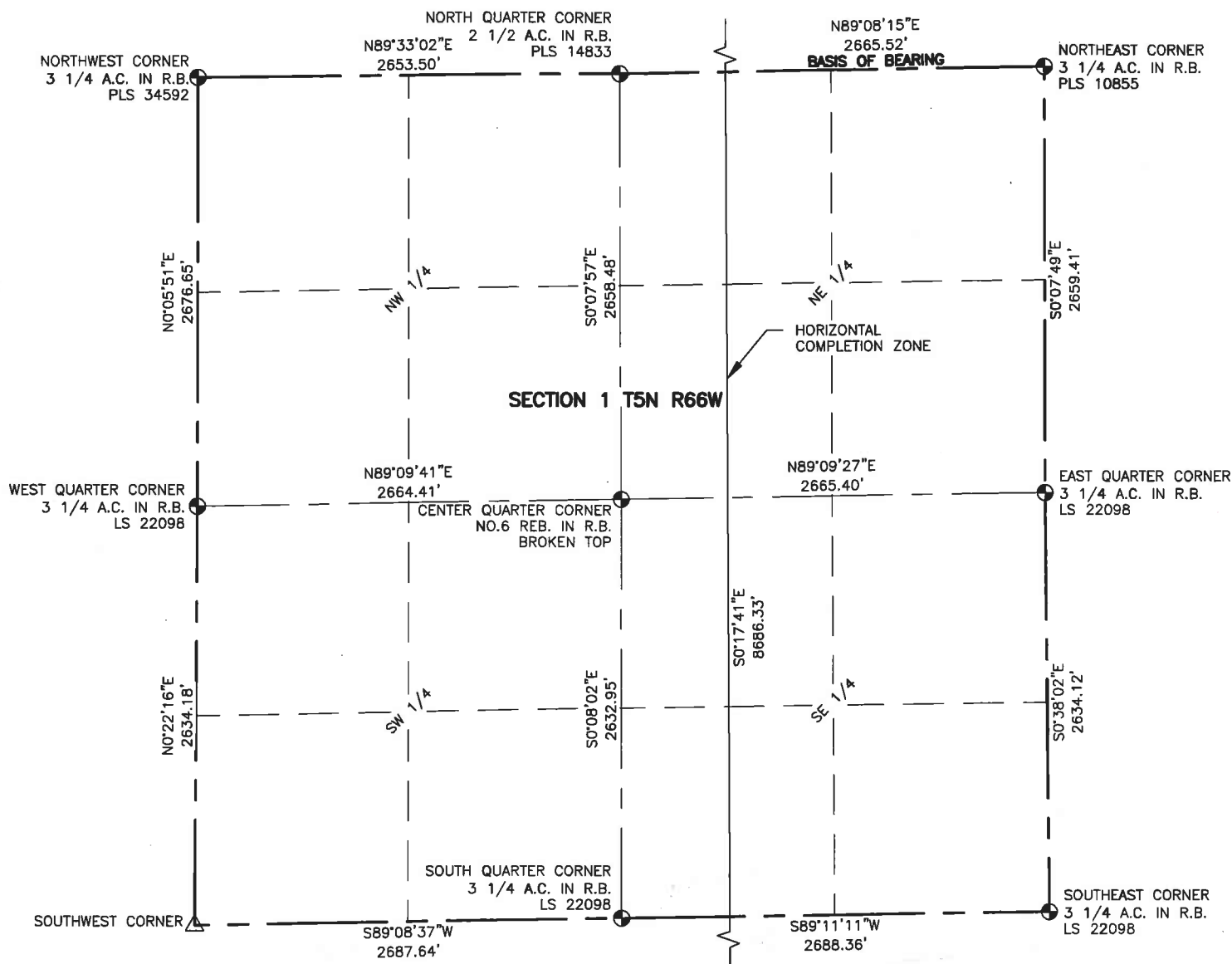
**LAMP RYNEARSON
 & ASSOCIATES**

4715 Innovation Drive 970.226.0342 | P
 Fort Collins, CO 80525 970.226.0879 | F
 www.LRA-Inc.com

Proposed Well Location Exhibit
 CS-Kinkade 1-1-12
 1 of 3

drawn by	date	cogcc id	project - task number	book and page
SSZ	4/23/13	430474	0210012.00	MR-01 5-6
path\filename P:\Engineering\0210012 MRI C Street\DRAWINGS\EXHIBITS\0210012EXWPM.dwg				

surface - location
 SW/4 SE/4 SEC 36 T6N R66W



NOTES:

DISTANCES ARE MEASURED PERPENDICULAR TO NEAREST SECTION LINE AND ARE SHOWN ON THE SAME SIDE OF THE SECTION LINE WHERE THE WELL IS LOCATED.

THIS MAP DOES NOT REPRESENT A MONUMENTED BOUNDARY SURVEY.

BASIS OF BEARING:

THE NORTH LINE OF THE NORTHEAST QUARTER OF SECTION 1-T5N-R66W BEARS N89°08'15"E BETWEEN THE NORTH QUARTER CORNER OF SECTION 1 MONUMENTED WITH A 2 1/2" A.C. IN R.B. "PLS 14833" AND THE NORTHEAST CORNER OF SECTION 1 MONUMENTED WITH A 3 1/4" A.C. IN R.B. STAMPED "PLS 10855" BASED ON THE COLORADO NORTH 0501 COORDINATE SYSTEM.

ELEVATIONS ARE NAVD 88, AS OBSERVED FROM GPS OBSERVATIONS

LEGEND

- ALIQUOT CORNER
- ⊙ BOTTOM HOLE
- △ COMPUTED ALIQUOT CORNERS FROM MONUMENT ACCESSORIES
- PROPOSED WELL
- A.C. ALUMINUM CAP
- R.B. RANGE BOX

0 500 1000 2000
1"=1000' US SURVEY FEET



**LAMP RYNEARSON
& ASSOCIATES**

4715 Innovation Drive 970.226.0342 | P
Fort Collins, CO 80525 970.226.0879 | F
www.LRA-Inc.com

Proposed Well Location Exhibit
CS-Kinkade 1-1-12
2 of 3

drawn by

date

cogcc id

project - task number

book and page

surface - location

SSZ

4/23/13

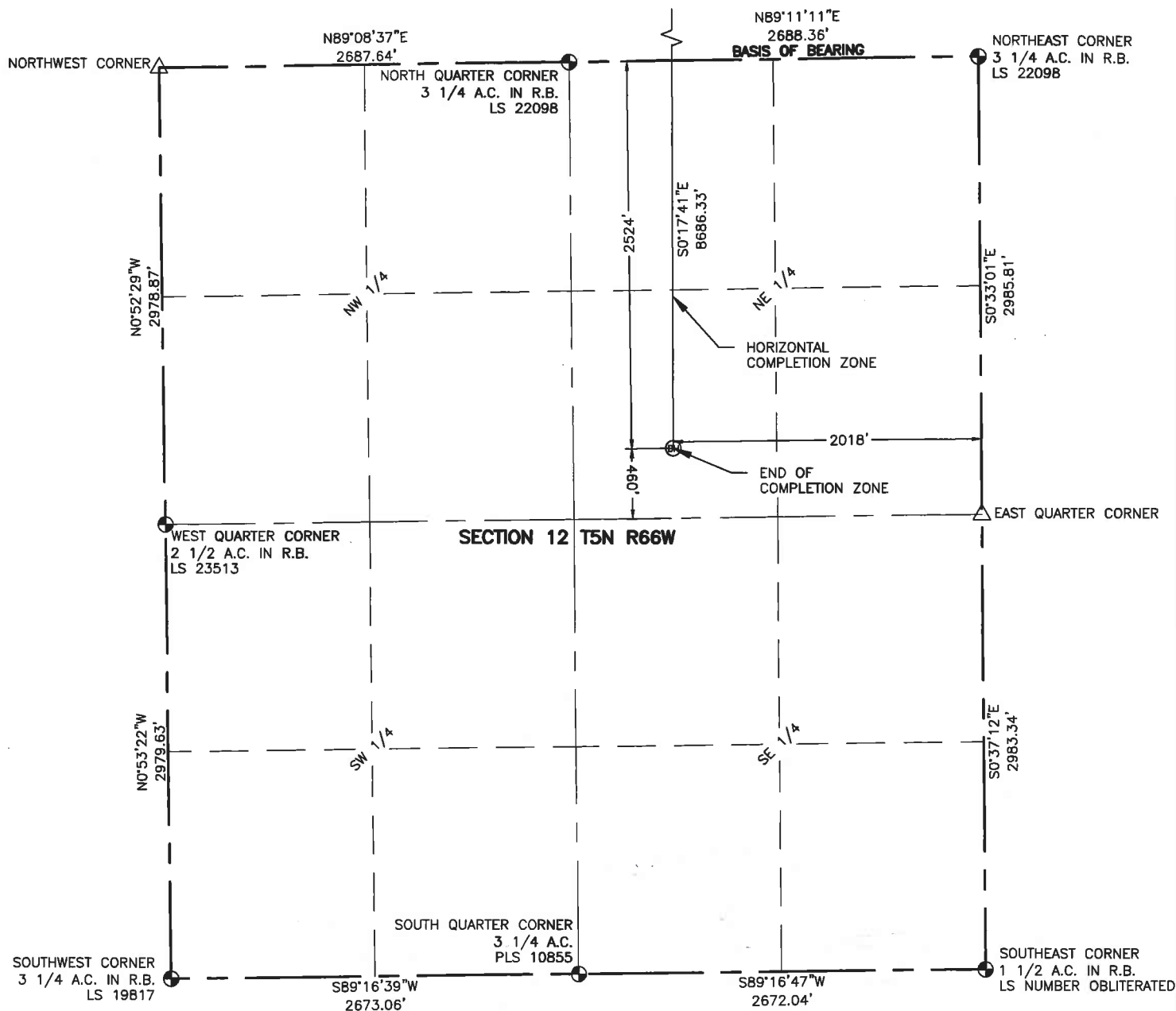
430474

0210012.00

MR-01 5-6

SW/4 SE/4 SEC 36 T6N R66W

path\filename P:\Engineering\0210012 MRI C Street\DRAWINGS\EXHIBITS\0210012EXWPM.dwg



NOTES:

DISTANCES ARE MEASURED PERPENDICULAR TO NEAREST SECTION LINE AND ARE SHOWN ON THE SAME SIDE OF THE SECTION LINE WHERE THE WELL IS LOCATED.

THIS MAP DOES NOT REPRESENT A MONUMENTED BOUNDARY SURVEY.

BASIS OF BEARING:

THE NORTH LINE OF THE NORTHEAST QUARTER OF SECTION 12-T5N-R66W BEARS N89°11'11"E BETWEEN THE NORTH QUARTER CORNER OF SECTION 12 MONUMENTED WITH A 3 1/4" A.C. IN R.B. "LS 22098" AND THE NORTHEAST CORNER OF SECTION 12 MONUMENTED WITH A 3 1/4" A.C. IN R.B. STAMPED "LS 22098" BASED ON THE COLORADO NORTH 0501 STATE PLANE COORDINATE SYSTEM.

ELEVATIONS ARE BASED ON NAVD 88, OBSERVED FROM GPS OBSERVATIONS

LEGEND

- ALIQUOT CORNER
- ⊙ BOTTOM HOLE
- △ COMPUTED ALIQUOT CORNERS FROM MONUMENT ACCESSORIES
- PROPOSED WELL
- A.C. ALUMINUM CAP
- R.B. RANGE BOX

0 500 1000 2000
1"=1000' US SURVEY FEET



**LAMP RYNEARSON
& ASSOCIATES**

4715 Innovation Drive 970.226.0342 | P
Fort Collins, CO 80525 970.226.0879 | F
www.LRA-Inc.com

Proposed Well Location Exhibit
CS-Kinkade 1-1-12
3 of 3

drawn by
SSZ

date
4/23/13

cogcc id
430474

project - task number
0210012.00

book and page
MR-01 5-6

surface - location
SW/4 SE/4 SEC 36 T6N R66W

path\filename P:\Engineering\0210012 MRI C Street\DRAWINGS\EXHIBITS\0210012EXWMB.dwg