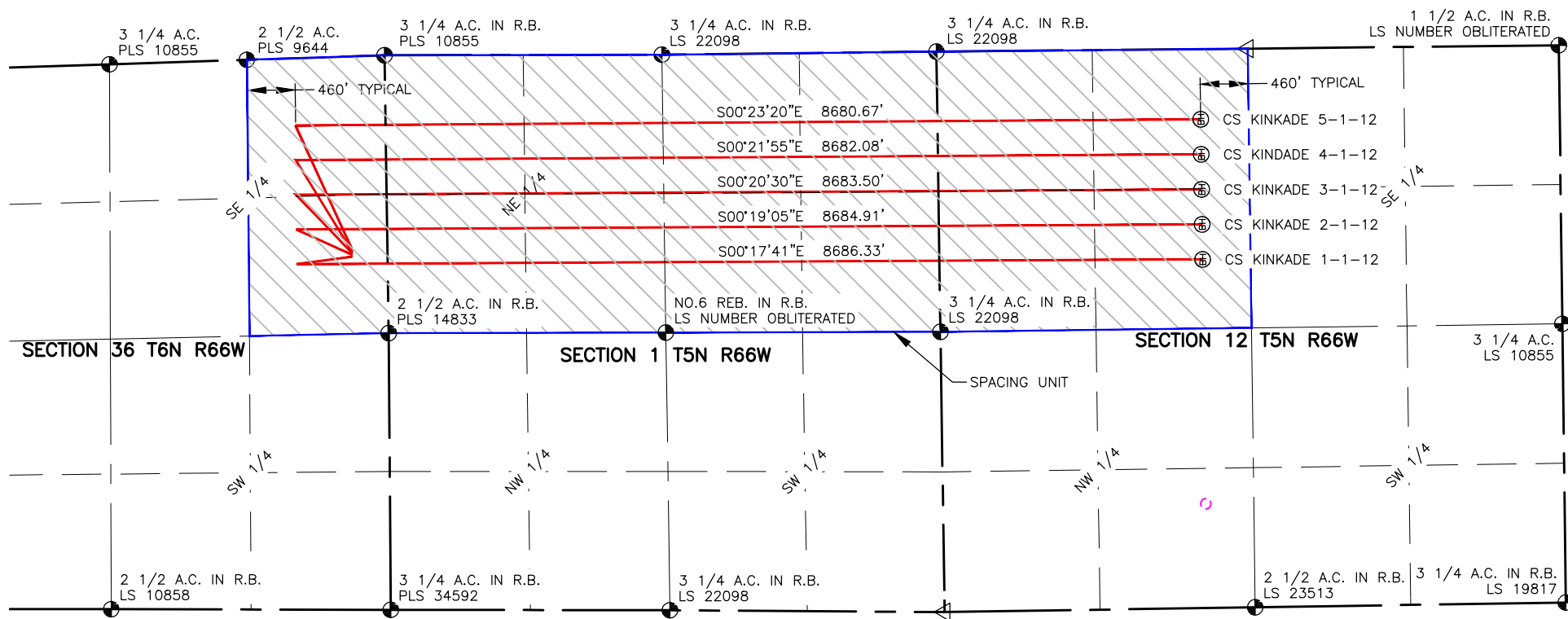


NAME: KINKADE SPACING UNIT: S/2 SE/4 SEC 36, T5N, R66W; & E/2 SEC 1, T5N, 66W; & NE/4 SEC 12, T5N, 66W
UNIT ACREAGE: 560

WELL NAME	SURFACE LOCATION				BEGIN HORIZONTAL COMPLETION ZONE				END HORIZONTAL COMPLETION ZONE			
	DIST.	DIR.	DIST.	DIR.	DIST.	DIR.	DIST.	DIR.	DIST.	DIR.	DIST.	DIR.
CS-KINKADE 1-1-12	339'	FSL	1920'	FEL	870'	FSL	1974'	FEL	2524'	FNL	2018'	FEL
CS-KINKADE 2-1-12	339'	FSL	1904'	FEL	868'	FSL	1642'	FEL	2524'	FNL	1682'	FEL
CS-KINKADE 3-1-12	339'	FSL	1888'	FEL	866'	FSL	1309'	FEL	2525'	FNL	1346'	FEL
CS-KINKADE 4-1-12	338'	FSL	1872'	FEL	864'	FSL	977'	FEL	2525'	FNL	1010'	FEL
CS-KINKADE 5-1-12	338'	FSL	1856'	FEL	862'	FSL	645'	FEL	2525'	FNL	674'	FEL



LAMP RYNEARSON
& ASSOCIATES

4715 Innovation Drive 970.226.0342 | P
Fort Collins, CO 80525 970.226.0879 | F
www.LRA-Inc.com

Planned Spacing Unit Exhibit
C Street Directional Project
Kinkade Spacing Unit

LEGEND

- ALIQUOT CORNER
- BOTTOM HOLE
- COMPUTED FROM GLO RECORDS



A.C. ALUMINUM CAP
R.B. RANGE BOX

0 1500

drawn by
SSZ
path\filename

date
4/24/13

cogcc id
430474

project - task number
0210012.00-502

book and page
MR-01 5-6

surface - location
SW/4 SE/4 SEC 36 T6N R66W

P:_Engineering\0210012 MRI C Street\DRAWINGS\EXHIBITS\0210012PSUE-KINKADE.dwg



07/01/2013

VIA ELECTRONIC TRANSMITTAL

Colorado Oil and Gas Conservation Commission
Attn: Matt Lepore, Director
1120 Lincoln Street, Suite 801
Denver, CO 80203

RE: 30-Day Affidavit and Certification Letter

CS-Kinkade #1-1-12 Well: 339' FSL, 1920' FEL, Sec. 36-T6N-R66W, Weld County, Colorado
CS-Kinkade #2-1-12 Well: 339' FSL, 1904' FEL, Sec. 36-T6N-R66W, Weld County, Colorado
CS-Kinkade #3-1-12 Well: 339' FSL, 1888' FEL, Sec. 36-T6N-R66W, Weld County, Colorado
CS-Kinkade #4-1-12 Well: 338' FSL, 1872' FEL, Sec. 36-T6N-R66W, Weld County, Colorado
CS-Kinkade #5-1-12 Well: 338' FSL, 1856' FEL, Sec. 36-T6N-R66W, Weld County, Colorado

Dear Mr. Lepore,

Mineral Resources, Inc. (MRI) hereby certifies that thirty (30) day notice has been given to all owners in the proposed wellbore spacing unit in accordance with Rule 318A.e(6). The notices were sent on 05/01/13. MRI has received no objections to the subject well locations, proposed spacing units, or additional producing information from any owner as described in C.R.S. §34-60-103(7). The thirty (30) day objection period has expired. MRI respectfully requests that the Director approve the wells. Should you have any questions or concerns please contact the undersigned at 303-216-0703.

Sincerely,

Clayton L. Doke
Senior Engineer
Peterson Energy, a Division of IPT
Consultants to Mineral Resources, Inc