

06 November 2013

Colorado Oil and Gas Conservation
Commission
The Chancery Building
1120 Lincoln Street, Suite 801
Denver, CO 80203



410 17th Street, Suite 1400
Denver, CO 80202
(720) 440-6100 phone
(720) 305-0804 fax

BonanzaCrk.com

Attn: Matthew Lepore, Director

Re: Notice of 318A(I).a(4).D Well Proposal
State Antelope U-Y-30HNB
SHL: NENE (400' FNL, 842' FEL) Sec 30-5N-62W, 6TH PM
Top of Production: NENE (631' FNL, 10' FEL) Sec 30-5N-62W, 6TH PM
Bottom of Production: SESE (470' FSL, 10' FEL) Sec 30-5N-62W, 6TH PM
Weld County, Colorado

Mr. Director:

Bonanza Creek Energy, Inc. (Bonanza) intends to permit, drill and operate the referenced Niobrara Horizontal Well. As defined by Colorado Oil and Gas Conservation Commission (COGCC) Rule 318A(I).a.(4)D., Bonanza proposes the following wellbore spacing unit:

E/2E/2 Section 30-T5N-R62W & W/2W/2 Section 29-T5N-R62W, 6TH PM, Weld County, CO –
320 Acres

Bonanza is the sole mineral lease holder in the proposed spacing unit, and no mineral owner notifications were required.

Bonanza respectfully requests that you review the enclosed wellbore spacing unit documentation and approve the referenced APD.

Please do not hesitate to call or email me, directly, at (720) 440-6112 or
KCaplan@BonanzaCRK.com, should you have any questions pertaining to this matter.

Thank you for your cooperation.

Sincerely,

BONANZA CREEK ENERGY, INC.
BONANZA CREEK ENERGY OPERATING COMPANY, LLC.

Keith S. Caplan
Sr. Regulatory Specialist

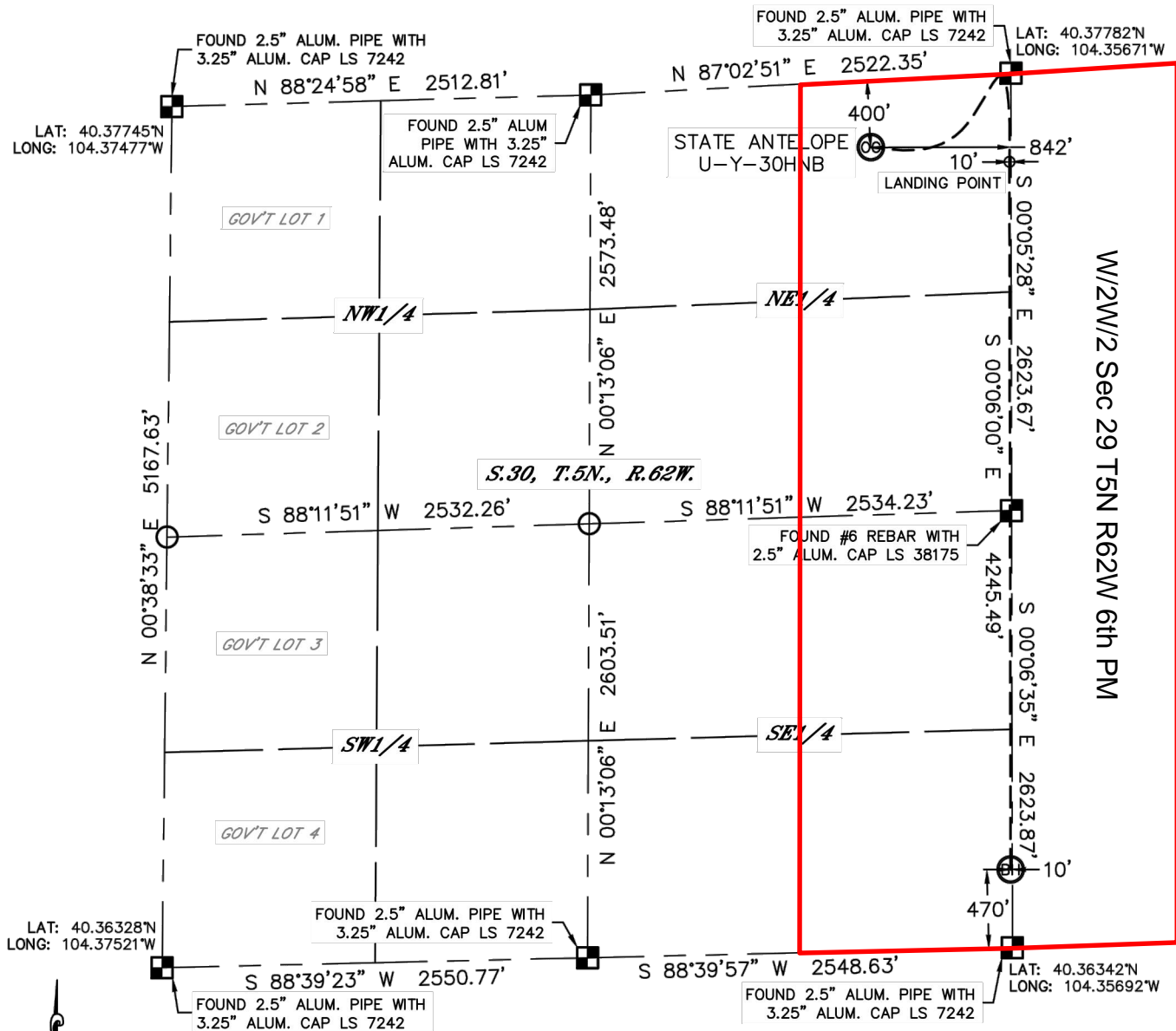


Lat40°, Inc. 1635 Foxtrail Drive, Suite 325 Loveland, CO 970-776-3321

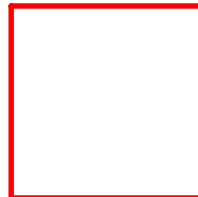
WELL LOCATION CERTIFICATE

THIS MAP DOES NOT REPRESENT A BOUNDARY SURVEY

SECTION: 30
TOWNSHIP: 5N
RANGE: 62W



In accordance with a request from Keith Caplan with BONANZA CREEK ENERGY, INC. Lat40°, Inc. has determined the surface location of the STATE ANTELOPE U-Y-30HNB to be 400' from the NORTH line and 842' from the EAST line and the bottom hole to be 470' from the SOUTH line and 10'



Wellbore Spacing Unit Outline



Wellbore Spacing Unit Map

06 November 2013 ksc

State Antelope U-Y-30HNB
E/2E/2 Sec 30 T5N R62W 6th PM
W/2W/2 Sec 29 T5N R62W 6th PM
Weld County, Colorado