

Project: Wattenberg Field
Site: E (Sec.23-T06N-R65W) Weld County, CO
Well: Reliance E23-63-1HNA
Wellbore: Original Drilling
Design: APD - Rev 1

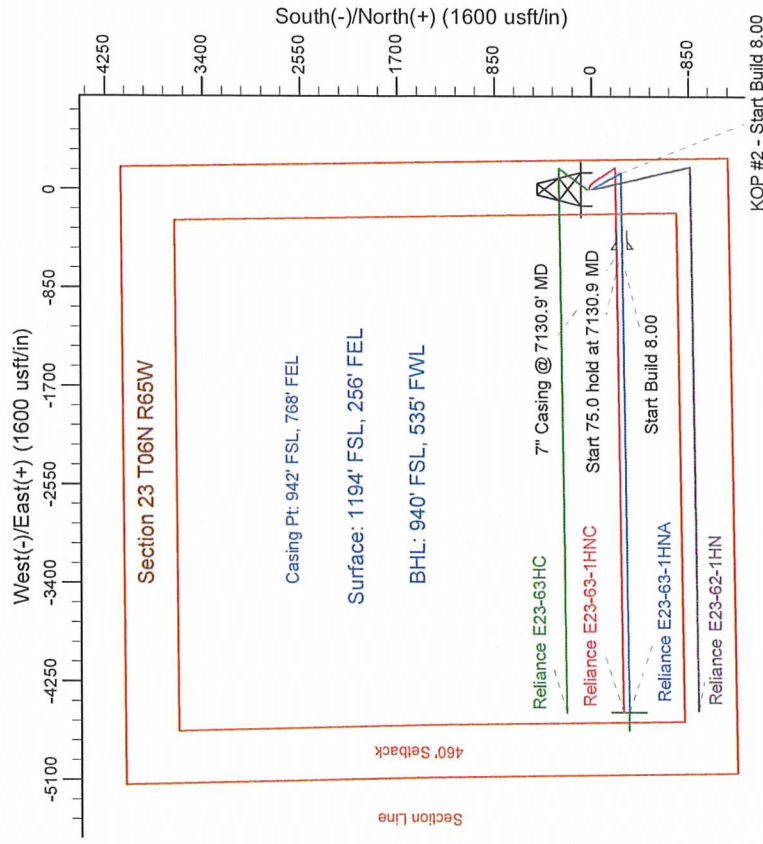
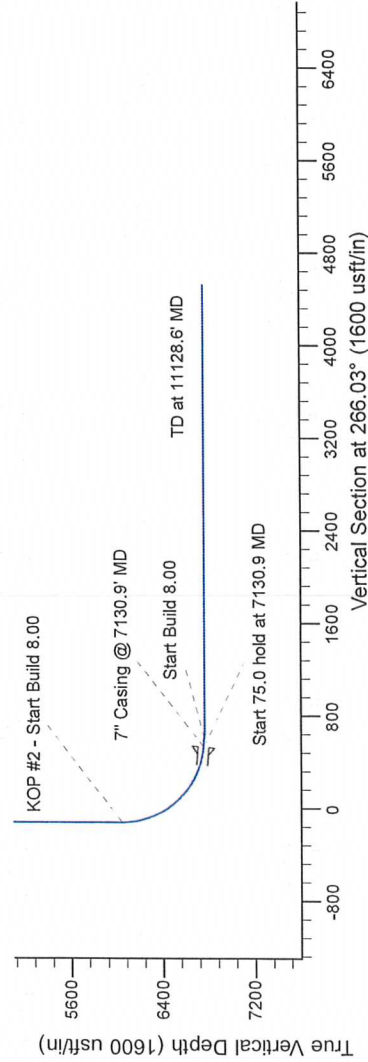
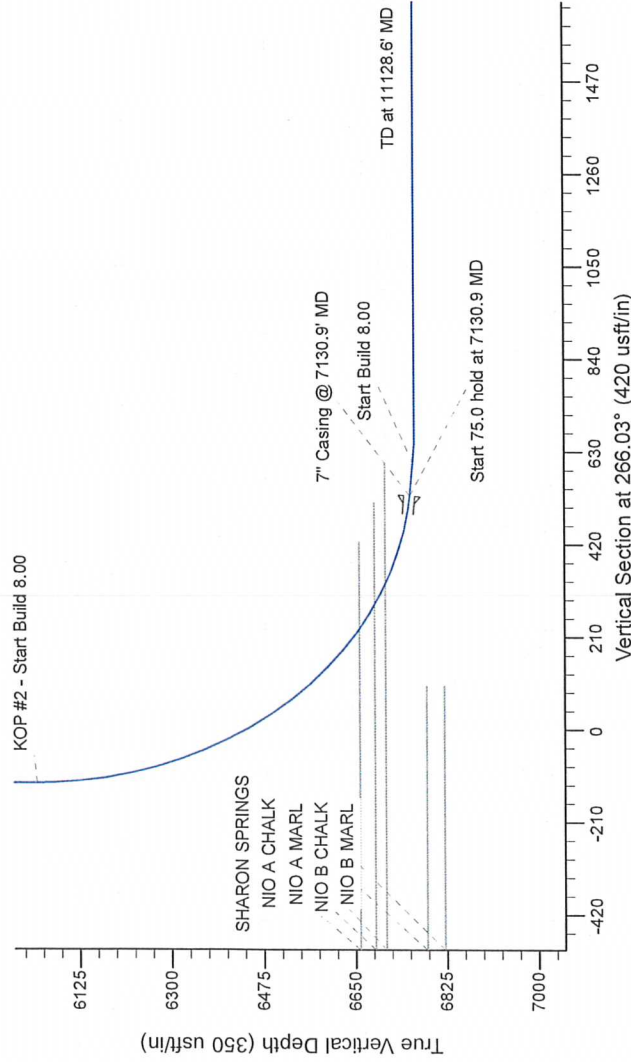
Northern Region Drilling - Working

Geodetic System: US State Plane 1983
Datum: North American Datum 1983
Ellipsoid: GRS 1980
Zone: Colorado Northern Zone
System Datum: Mean Sea Level

SECTION DETAILS

Sec	MD	Inc	Azi	TVD	+N/S	+E/W	Dieg	VSect	Target
1	0.0	0.00	0.00	1800.0	0.0	0.0	0.00	0.0	0.0
2	1800.3	12.03	151.14	2396.9	-5.0	30.3	0.00	-26.5	0.0
3	2499.9	12.03	151.14	3188.1	-198.9	109.7	0.00	-65.6	0.0
4	3791.1	0.00	0.00	3765.0	-254.0	140.0	0.00	-122.1	0.0
5	6068.4	0.00	0.00	6042.3	-513.7	8.00	0.00	530.6	0.00
6	7130.9	85.00	269.27	6756.7	-263.2	-650.8	0.00	667.6	0.00
7	7205.9	90.00	269.27	6762.0	-264.0	-4510.8	0.00	4521.6	0.00
8	7268.4	90.00	269.27	6765.0	-264.0	-4510.8	0.00	4521.6	0.00
9	7268.4	90.00	269.27	6765.0	-264.0	-4510.8	0.00	4521.6	0.00
10	11128.6	90.00	269.27	6765.0	-312.9	-4510.8	0.00	4521.6	0.00

Reliance E23-63-1HNA BHL 940'FSL, 535'FWL



T G M

Azimuths to Grid North
True North: -0.57°
Magnetic North: 7.92°

Magnetic Field
Strength: 53008.2snT
Dip Angle: 67.07°
Date: 5/10/2013
Model: IGRF200510

WELL DETAILS: Reliance E23-63-1HNA

	North	East	Ground Level	Longitude
0.0	1414357.04	3244354.22	40.467490	-104.621750

Plan: APD - Rev 1 (Reliance E23-63-1HNA/Original Drilling)

Created By: Shalley Jewell	Date: 10/10, October 14 2013
Checked: _____	Date: _____
Reviewed: _____	Date: _____
Approved: _____	Date: _____