

06 November 2013

Colorado Oil and Gas Conservation  
Commission  
The Chancery Building  
1120 Lincoln Street, Suite 801  
Denver, CO 80203



410 17th Street, Suite 1400  
Denver, CO 80202  
(720) 440-6100 phone  
(720) 305-0804 fax

Bonanzacrk.com

Attn: Matthew Lepore, Director

Re: Notice of 318A(I).a(4).D Well Proposal  
State Antelope P-T-30HNB  
SHL: NENE (460' FNL, 839' FEL) Sec 30-5N-62W, 6<sup>TH</sup> PM  
Top of Production: NWNW (631' FNL, 1261' FEL) Sec 30-5N-62W, 6<sup>TH</sup> PM  
Bottom of Production: SWSW (470' FSL, 1274' FEL) Sec 30-5N-62W, 6<sup>TH</sup> PM  
Weld County, Colorado

Mr. Director:

Bonanza Creek Energy, Inc. (Bonanza) intends to permit, drill and operate the referenced Niobrara Horizontal Well. As defined by Colorado Oil and Gas Conservation Commission (COGCC) Rule 318A(I).a.(4)D., Bonanza proposes the following wellbore spacing unit:

E/2 Section 30-T5N-R62W, 6<sup>TH</sup> PM, Weld County, CO – 320 Acres

Bonanza is the sole mineral lease holder in the proposed spacing unit, and no mineral owner notifications were required.

Bonanza respectfully requests that you review the enclosed wellbore spacing unit documentation and approve the referenced APD.

Please do not hesitate to call or email me, directly, at (720) 440-6112 or KCaplan@BonanzaCRK.com, should you have any questions pertaining to this matter.

Thank you for your cooperation.

Sincerely,

**BONANZA CREEK ENERGY, INC.**  
**BONANZA CREEK ENERGY OPERATING COMPANY, LLC.**

A handwritten signature in blue ink, appearing to read 'Keith S. Caplan'.

Keith S. Caplan  
Sr. Regulatory Specialist

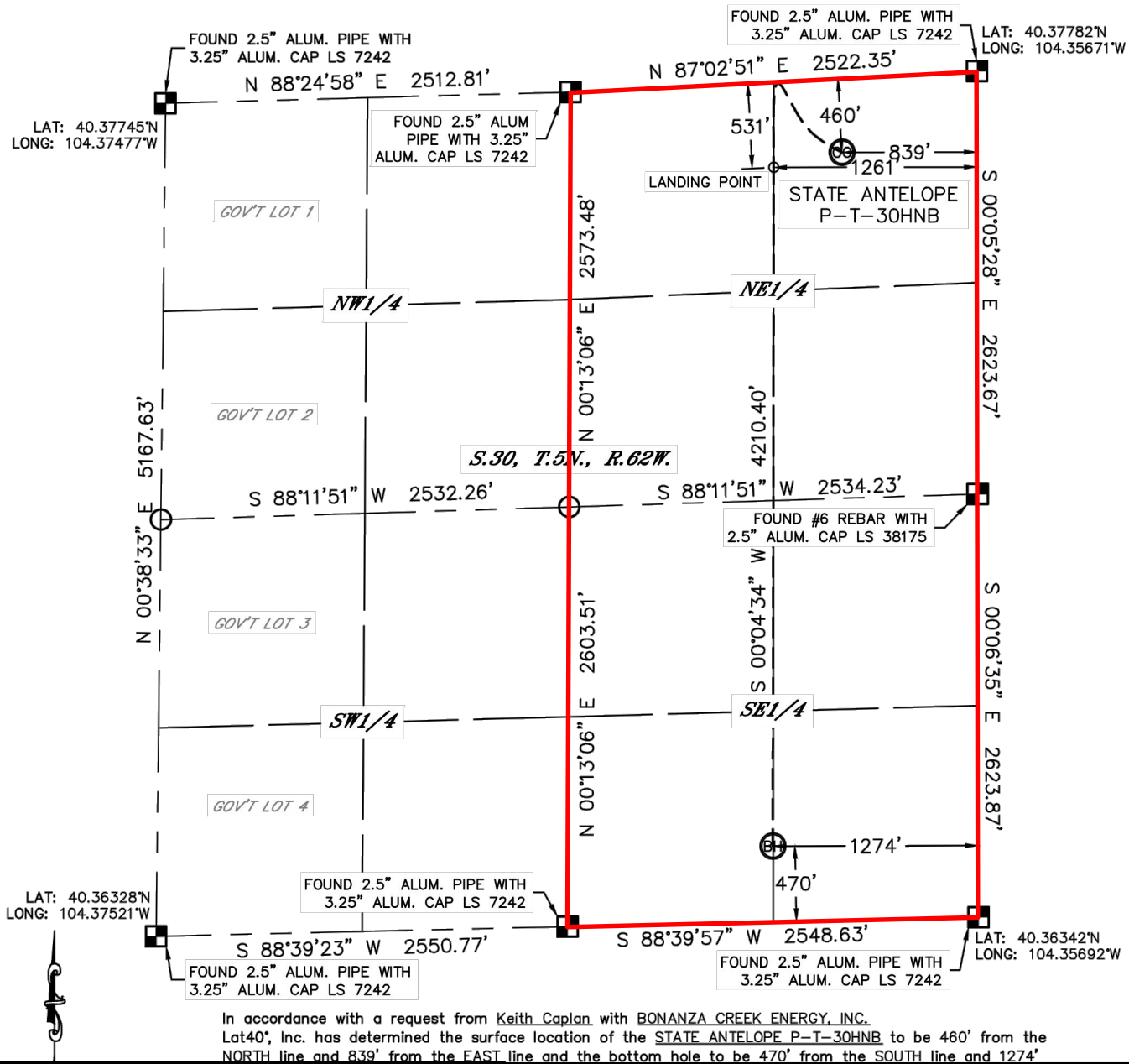


Lat40°, Inc. 1635 Foxtrail Drive, Suite 325 Loveland, CO 970-776-3321

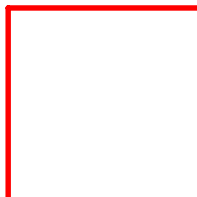
## WELL LOCATION CERTIFICATE

THIS MAP DOES NOT REPRESENT A BOUNDARY SURVEY

SECTION: 30  
TOWNSHIP: 5N  
RANGE: 62W



**BONANZA  
CREEK**



Wellbore Spacing Unit Outline



Wellbore Spacing Unit Map

06 November 2013 ksc

State Antelope P-T-30HNB  
E/2 Sec 30 T5N R62W 6th PM  
Weld County, Colorado