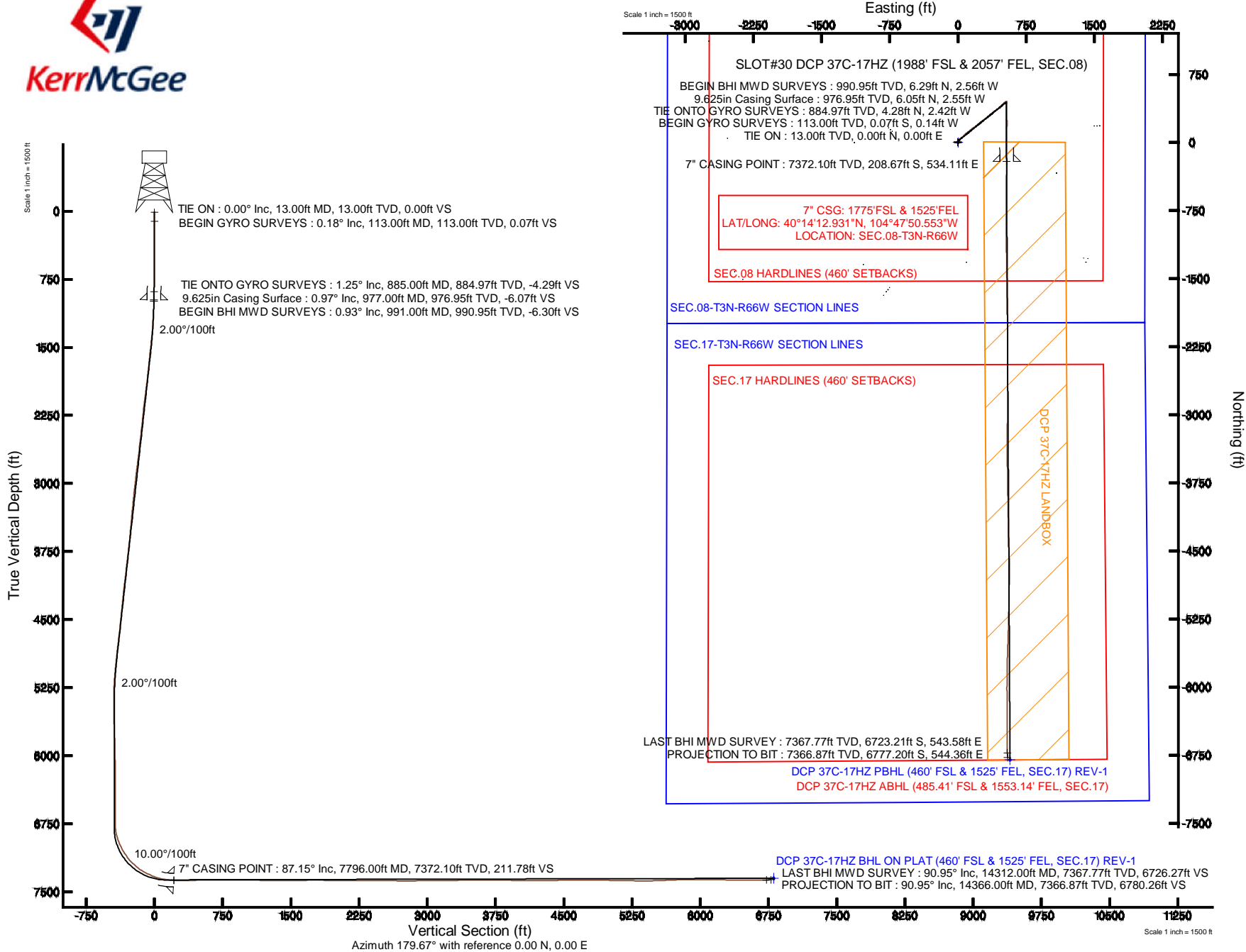


KERR-MCGEE OIL & GAS ONSHORE LP

Location: COLORADO Slot: SLOT#30 DCP 37C-17HZ (1988' FSL & 2057' FEL, SEC.08)
 Field: WELD COUNTY (KERR MCGEE) Well: DCP 37C-17HZ
 Facility: SEC.08-T3N-R66W Wellbore: DCP 37C-17HZ PWB

Plot reference wellpath is DCP 37C-17HZ (REV-A.0) PWP

True vertical depths are referenced to ENSIGN 145 (4881: 13' KB + 4868' GL) (RKB)	Grid System: NAD83 / Lambert Colorado SP, Northern Zone (501), US feet
Measured depths are referenced to ENSIGN 145 (4881: 13' KB + 4868' GL) (RKB)	North Reference: True north
ENSGN 145 (4881: 13' KB + 4868' GL) (RKB) to Mean Sea Level: 4881 feet	Scale: True distance
Mean Sea Level to Mud line (At Slot: SLOT#30 DCP 37C-17HZ (1988' FSL & 2057' FEL, SEC.08)): 0 feet	Depths are in feet
Coordinates are in feet referenced to Slot	Created by: robale01 on 10/Oct/2013



REFERENCE WELLPATH IDENTIFICATION

Operator	KERR-MCGEE OIL & GAS ONSHORE LP	Slot	SLOT#30 DCP 37C-17HZ (1988' FSL & 2057' FEL, SEC.08)
Area	COLORADO	Well	DCP 37C-17HZ
Field	WELD COUNTY (KERR MCGEE)	Wellbore	DCP 37C-17HZ AWB
Facility	SEC.08-T3N-R66W		

REPORT SETUP INFORMATION

Projection System	NAD83 / Lambert Colorado SP, Northern Zone (501), US feet	Software System	WellArchitect® 4.0.0
North Reference	True	User	Robiale01
Scale	0.999957	Report Generated	10/Oct/2013 at 16:28
Convergence at slot	n/a	Database/Source file	WA_ANADARKO/DCP_37C-17HZ_AWB.xml

WELLPATH LOCATION

	Local coordinates		Grid coordinates		Geographic coordinates	
	North[ft]	East[ft]	Easting[US ft]	Northing[US ft]	Latitude	Longitude
Slot Location	10.22	-27.61	3195621.05	1330135.32	40°14'14.993"N	104°47'57.440"W
Facility Reference Pt			3195648.74	1330125.32	40°14'14.892"N	104°47'57.084"W
Field Reference Pt			3197771.84	1268891.29	40°04'09.600"N	104°47'36.000"W

WELLPATH DATUM

Calculation method	Minimum curvature	ENSIGN 145 (4881': 13' KB + 4868' GL) (RKB) to Facility Vertical Datum	4881.00ft
Horizontal Reference Pt	Slot	ENSIGN 145 (4881': 13' KB + 4868' GL) (RKB) to Mean Sea Level	4881.00ft
Vertical Reference Pt	ENSIGN 145 (4881': 13' KB + 4868' GL) (RKB)	ENSIGN 145 (4881': 13' KB + 4868' GL) (RKB) to Mud Line at Slot (SLOT#30 DCP 37C-17HZ (1988' FSL & 2057' FEL, SEC.08))	4881.00ft
MD Reference Pt	ENSIGN 145 (4881': 13' KB + 4868' GL) (RKB)	Section Origin	N 0.00, E 0.00 ft
Field Vertical Reference	Mean Sea Level	Section Azimuth	179.67°

Actual Wellpath Report

DCP 37C-17HZ AWP

Page 2 of 7

REFERENCE WELLPATH IDENTIFICATION

Operator	KERR-MCGEE OIL & GAS ONSHORE LP	Slot	SLOT#30 DCP 37C-17HZ (1988' FSL & 2057' FEL, SEC.08)
Area	COLORADO	Well	DCP 37C-17HZ
Field	WELD COUNTY (KERR MCGEE)	Wellbore	DCP 37C-17HZ AWP
Facility	SEC.08-T3N-R66W		

WELLPATH DATA (169 stations) † = interpolated/extrapolated station

MD [ft]	Inclination [°]	Azimuth [°]	TVD [ft]	Vert Sect [ft]	North [ft]	East [ft]	Latitude	Longitude	DLS [°/100ft]	Comments
0.00†	0.000	244.010	0.00	0.00	0.00	0.00	40°14'14.993"N	104°47'57.440"W	0.00	
13.00	0.000	244.010	13.00	0.00	0.00	0.00	40°14'14.993"N	104°47'57.440"W	0.00	TIE ON
113.00	0.180	244.010	113.00	0.07	-0.07	-0.14	40°14'14.992"N	104°47'57.442"W	0.18	BEGIN GYRO SURVEYS
213.00	0.160	300.580	213.00	0.06	-0.07	-0.40	40°14'14.992"N	104°47'57.445"W	0.16	
313.00	0.050	2.940	313.00	-0.05	0.05	-0.52	40°14'14.993"N	104°47'57.447"W	0.14	
413.00	0.130	309.130	413.00	-0.17	0.16	-0.61	40°14'14.995"N	104°47'57.448"W	0.11	
513.00	0.230	309.450	513.00	-0.37	0.36	-0.85	40°14'14.997"N	104°47'57.451"W	0.10	
613.00	0.350	325.150	613.00	-0.75	0.74	-1.18	40°14'15.000"N	104°47'57.455"W	0.14	
713.00	0.670	333.960	712.99	-1.53	1.52	-1.61	40°14'15.008"N	104°47'57.461"W	0.33	
813.00	1.020	341.480	812.98	-2.90	2.89	-2.15	40°14'15.022"N	104°47'57.468"W	0.37	
885.00	1.250	355.050	884.97	-4.29	4.28	-2.42	40°14'15.035"N	104°47'57.471"W	0.49	TIE ONTO GYRO SURVEYS
991.00	0.930	357.430	990.95	-6.30	6.29	-2.56	40°14'15.055"N	104°47'57.473"W	0.30	BEGIN BHI MWD SURVEYS
1085.00	2.320	17.570	1084.91	-8.87	8.86	-2.02	40°14'15.081"N	104°47'57.466"W	1.58	
1178.00	4.220	33.310	1177.76	-13.52	13.52	0.43	40°14'15.127"N	104°47'57.434"W	2.24	
1272.00	5.270	41.930	1271.43	-19.59	19.62	5.21	40°14'15.187"N	104°47'57.373"W	1.35	
1366.00	6.990	41.430	1364.89	-27.05	27.12	11.88	40°14'15.261"N	104°47'57.287"W	1.83	
1459.00	8.910	45.010	1456.99	-36.33	36.46	20.72	40°14'15.353"N	104°47'57.173"W	2.13	
1553.00	10.250	50.480	1549.68	-46.74	46.93	32.32	40°14'15.457"N	104°47'57.023"W	1.72	
1646.00	8.940	49.550	1641.38	-56.62	56.88	44.20	40°14'15.555"N	104°47'56.870"W	1.42	
1740.00	9.540	51.370	1734.16	-66.15	66.48	55.85	40°14'15.650"N	104°47'56.720"W	0.71	
1834.00	9.960	50.230	1826.80	-76.15	76.54	68.18	40°14'15.749"N	104°47'56.561"W	0.49	
1927.00	10.240	45.040	1918.36	-87.06	87.53	80.21	40°14'15.858"N	104°47'56.406"W	1.02	
2017.00	10.260	49.140	2006.93	-97.89	98.43	91.94	40°14'15.966"N	104°47'56.255"W	0.81	
2107.00	11.140	49.670	2095.36	-108.69	109.30	104.63	40°14'16.073"N	104°47'56.091"W	0.98	
2197.00	10.610	54.650	2183.75	-119.03	119.72	118.01	40°14'16.176"N	104°47'55.918"W	1.20	
2287.00	9.700	52.780	2272.34	-128.33	129.10	130.81	40°14'16.269"N	104°47'55.753"W	1.08	
2377.00	9.630	48.350	2361.06	-137.86	138.69	142.47	40°14'16.363"N	104°47'55.603"W	0.83	
2467.00	10.020	51.700	2449.74	-147.64	148.54	154.24	40°14'16.461"N	104°47'55.451"W	0.77	
2557.00	10.840	54.610	2538.25	-157.32	158.30	167.28	40°14'16.557"N	104°47'55.283"W	1.08	
2647.00	11.190	54.070	2626.60	-167.26	168.32	181.25	40°14'16.656"N	104°47'55.103"W	0.41	
2737.00	11.290	53.810	2714.87	-177.51	178.65	195.44	40°14'16.758"N	104°47'54.920"W	0.12	
2827.00	11.350	51.760	2803.12	-188.11	189.33	209.50	40°14'16.864"N	104°47'54.739"W	0.45	
2917.00	10.910	49.610	2891.43	-199.03	200.33	222.95	40°14'16.973"N	104°47'54.565"W	0.67	
3007.00	10.290	48.710	2979.89	-209.78	211.16	235.47	40°14'17.080"N	104°47'54.404"W	0.71	
3097.00	10.550	54.170	3068.41	-219.83	221.28	248.19	40°14'17.180"N	104°47'54.240"W	1.13	
3187.00	9.980	53.520	3156.97	-229.22	230.74	261.14	40°14'17.273"N	104°47'54.073"W	0.65	
3277.00	9.310	53.220	3245.70	-238.14	239.74	273.24	40°14'17.362"N	104°47'53.917"W	0.75	
3367.00	8.690	53.940	3334.59	-246.44	248.10	284.57	40°14'17.445"N	104°47'53.771"W	0.70	
3457.00	9.400	56.540	3423.47	-254.42	256.16	296.20	40°14'17.524"N	104°47'53.621"W	0.91	
3547.00	8.700	50.640	3512.35	-262.73	264.53	307.59	40°14'17.607"N	104°47'53.474"W	1.29	
3637.00	8.870	50.330	3601.29	-271.41	273.27	318.20	40°14'17.693"N	104°47'53.337"W	0.20	
3727.00	10.080	51.880	3690.06	-280.64	282.56	329.74	40°14'17.785"N	104°47'53.188"W	1.37	
3817.00	9.660	48.340	3778.73	-290.45	292.44	341.57	40°14'17.883"N	104°47'53.036"W	0.82	
3907.00	10.480	50.930	3867.35	-300.56	302.62	353.57	40°14'17.983"N	104°47'52.881"W	1.04	
3997.00	10.550	50.180	3955.83	-310.92	313.06	366.25	40°14'18.087"N	104°47'52.717"W	0.17	

REFERENCE WELLPATH IDENTIFICATION

Operator	KERR-MCGEE OIL & GAS ONSHORE LP	Slot	SLOT#30 DCP 37C-17HZ (1988' FSL & 2057' FEL, SEC.08)
Area	COLORADO	Well	DCP 37C-17HZ
Field	WELD COUNTY (KERR MCGEE)	Wellbore	DCP 37C-17HZ AWB
Facility	SEC.08-T3N-R66W		

WELLPATH DATA (169 stations)

MD [ft]	Inclination [°]	Azimuth [°]	TVD [ft]	Vert Sect [ft]	North [ft]	East [ft]	Latitude	Longitude	DLS [°/100ft]	Comments
4087.00	10.360	48.870	4044.34	-321.44	323.66	378.68	40°14'18.191"N	104°47'52.557"W	0.34	
4177.00	9.920	47.470	4132.93	-331.94	334.22	390.49	40°14'18.296"N	104°47'52.405"W	0.56	
4267.00	10.220	55.150	4221.55	-341.67	344.02	402.75	40°14'18.393"N	104°47'52.247"W	1.53	
4357.00	9.270	54.570	4310.25	-350.36	352.79	415.21	40°14'18.479"N	104°47'52.086"W	1.06	
4447.00	10.080	55.400	4398.97	-358.96	361.46	427.60	40°14'18.565"N	104°47'51.926"W	0.91	
4537.00	10.830	56.040	4487.48	-368.08	370.66	441.10	40°14'18.656"N	104°47'51.752"W	0.84	
4627.00	10.230	54.580	4575.96	-377.36	380.01	454.62	40°14'18.748"N	104°47'51.578"W	0.73	
4717.00	9.730	44.490	4664.60	-387.35	390.07	466.47	40°14'18.848"N	104°47'51.425"W	2.02	
4807.00	9.390	45.210	4753.35	-397.88	400.67	477.01	40°14'18.952"N	104°47'51.289"W	0.40	
4898.00	9.040	44.960	4843.18	-408.11	410.96	487.33	40°14'19.054"N	104°47'51.156"W	0.39	
4987.00	8.190	45.150	4931.18	-417.47	420.38	496.76	40°14'19.147"N	104°47'51.034"W	0.96	
5078.00	7.920	44.360	5021.28	-426.48	429.43	505.74	40°14'19.237"N	104°47'50.919"W	0.32	
5168.00	6.850	42.320	5110.53	-434.83	437.83	513.69	40°14'19.320"N	104°47'50.816"W	1.22	
5257.00	5.730	54.350	5199.00	-441.30	444.35	520.87	40°14'19.384"N	104°47'50.724"W	1.94	
5348.00	3.960	62.030	5289.67	-445.39	448.47	527.34	40°14'19.425"N	104°47'50.640"W	2.07	
5438.00	2.230	65.980	5379.53	-447.53	450.64	531.68	40°14'19.446"N	104°47'50.584"W	1.94	
5528.00	1.300	133.330	5469.50	-447.53	450.65	534.03	40°14'19.446"N	104°47'50.554"W	2.34	
5618.00	1.590	197.320	5559.48	-445.64	448.76	534.40	40°14'19.428"N	104°47'50.549"W	1.72	
5708.00	1.920	199.210	5649.43	-443.03	446.14	533.53	40°14'19.402"N	104°47'50.560"W	0.37	
5798.00	1.890	185.560	5739.38	-440.13	443.24	532.89	40°14'19.373"N	104°47'50.569"W	0.50	
5888.00	1.680	174.200	5829.34	-437.34	440.45	532.88	40°14'19.345"N	104°47'50.569"W	0.46	
5978.00	1.390	163.210	5919.31	-434.98	438.10	533.33	40°14'19.322"N	104°47'50.563"W	0.46	
6068.00	0.910	157.390	6009.29	-433.27	436.39	533.92	40°14'19.305"N	104°47'50.555"W	0.55	
6248.00	0.500	93.940	6189.28	-431.89	435.02	535.25	40°14'19.292"N	104°47'50.538"W	0.46	
6428.00	0.400	62.750	6369.27	-432.12	435.25	536.59	40°14'19.294"N	104°47'50.521"W	0.14	
6608.00	0.060	275.880	6549.27	-432.41	435.55	537.06	40°14'19.297"N	104°47'50.515"W	0.25	
6743.00	0.320	226.030	6684.27	-432.16	435.29	536.72	40°14'19.294"N	104°47'50.519"W	0.21	
6788.00	0.410	219.550	6729.27	-431.95	435.08	536.52	40°14'19.292"N	104°47'50.522"W	0.22	
6833.00	2.620	190.990	6774.25	-430.81	433.95	536.23	40°14'19.281"N	104°47'50.526"W	5.04	
6878.00	7.310	182.940	6819.07	-426.95	430.08	535.88	40°14'19.243"N	104°47'50.530"W	10.51	
6923.00	13.560	182.440	6863.30	-418.81	421.94	535.51	40°14'19.163"N	104°47'50.535"W	13.89	
6968.00	17.960	181.840	6906.60	-406.60	409.73	535.06	40°14'19.042"N	104°47'50.541"W	9.78	
7013.00	21.110	181.100	6949.01	-391.56	394.69	534.68	40°14'18.893"N	104°47'50.545"W	7.02	
7058.00	24.830	180.450	6990.43	-374.01	377.13	534.45	40°14'18.720"N	104°47'50.548"W	8.29	
7103.00	28.550	179.250	7030.63	-353.80	356.92	534.52	40°14'18.520"N	104°47'50.548"W	8.35	
7148.00	31.700	178.390	7069.55	-331.22	334.35	534.99	40°14'18.297"N	104°47'50.541"W	7.07	
7193.00	35.970	176.840	7106.92	-306.19	309.32	536.06	40°14'18.050"N	104°47'50.528"W	9.68	
7238.00	40.070	176.680	7142.36	-278.52	281.65	537.62	40°14'17.776"N	104°47'50.508"W	9.11	
7283.00	44.010	178.850	7175.78	-248.41	251.55	538.78	40°14'17.479"N	104°47'50.493"W	9.33	
7328.00	47.960	180.220	7207.04	-216.05	219.20	539.03	40°14'17.159"N	104°47'50.490"W	9.05	
7373.00	52.370	180.190	7235.86	-181.51	184.65	538.90	40°14'16.818"N	104°47'50.491"W	9.80	
7418.00	57.480	181.550	7261.71	-144.70	147.84	538.33	40°14'16.454"N	104°47'50.499"W	11.62	
7463.00	61.390	182.260	7284.59	-105.99	109.12	537.04	40°14'16.071"N	104°47'50.515"W	8.79	
7508.00	64.430	181.340	7305.08	-65.96	69.09	535.78	40°14'15.676"N	104°47'50.531"W	7.00	
7553.00	67.700	181.620	7323.33	-24.86	27.98	534.72	40°14'15.269"N	104°47'50.545"W	7.29	

REFERENCE WELLPATH IDENTIFICATION

Operator	KERR-MCGEE OIL & GAS ONSHORE LP	Slot	SLOT#30 DCP 37C-17HZ (1988' FSL & 2057' FEL, SEC.08)
Area	COLORADO	Well	DCP 37C-17HZ
Field	WELD COUNTY (KERR MCGEE)	Wellbore	DCP 37C-17HZ AWP
Facility	SEC.08-T3N-R66W		

WELLPATH DATA (169 stations) † = interpolated/extrapolated station

MD [ft]	Inclination [°]	Azimuth [°]	TVD [ft]	Vert Sect [ft]	North [ft]	East [ft]	Latitude	Longitude	DLS [°/100ft]	Comments
7598.00	71.170	180.350	7339.14	17.26	-14.14	534.00	40°14'14.853"N	104°47'50.554"W	8.15	
7643.00	75.610	179.980	7352.00	60.37	-57.25	533.88	40°14'14.427"N	104°47'50.556"W	9.90	
7688.00	80.530	179.410	7361.30	104.38	-101.27	534.12	40°14'13.992"N	104°47'50.553"W	11.00	
7733.00	84.230	180.140	7367.26	148.97	-145.86	534.29	40°14'13.552"N	104°47'50.551"W	8.38	
7751.00	84.870	180.220	7368.97	166.89	-163.78	534.23	40°14'13.374"N	104°47'50.551"W	3.58	
7796.00†	87.154	180.104	7372.10	211.78	-208.67	534.11	40°14'12.931"N	104°47'50.553"W	5.08	7" CASING POINT
7844.00	89.590	179.980	7373.47	259.75	-256.65	534.07	40°14'12.457"N	104°47'50.554"W	5.08	
7968.00	90.550	180.410	7373.32	383.75	-380.64	533.65	40°14'11.231"N	104°47'50.559"W	0.85	
8061.00	90.920	180.540	7372.12	476.73	-473.63	532.88	40°14'10.313"N	104°47'50.569"W	0.42	
8155.00	90.180	180.590	7371.22	570.71	-567.62	531.95	40°14'09.384"N	104°47'50.581"W	0.79	
8249.00	89.380	180.380	7371.58	664.70	-661.62	531.16	40°14'08.455"N	104°47'50.591"W	0.88	
8342.00	90.270	180.010	7371.87	757.70	-754.62	530.84	40°14'07.536"N	104°47'50.595"W	1.04	
8436.00	90.480	180.550	7371.25	851.69	-848.61	530.38	40°14'06.607"N	104°47'50.601"W	0.62	
8530.00	90.460	179.300	7370.48	945.68	-942.61	530.50	40°14'05.678"N	104°47'50.600"W	1.33	
8623.00	89.720	179.850	7370.33	1038.68	-1035.60	531.19	40°14'04.759"N	104°47'50.591"W	0.99	
8713.00	88.760	179.030	7371.53	1128.67	-1125.59	532.07	40°14'03.870"N	104°47'50.580"W	1.40	
8804.00	88.580	178.550	7373.64	1219.64	-1216.54	533.99	40°14'02.971"N	104°47'50.555"W	0.56	
8893.00	89.220	178.680	7375.35	1308.60	-1305.50	536.14	40°14'02.092"N	104°47'50.527"W	0.73	
8983.00	90.430	179.630	7375.62	1398.60	-1395.49	537.47	40°14'01.203"N	104°47'50.510"W	1.71	
9073.00	90.610	179.070	7374.81	1488.59	-1485.48	538.49	40°14'00.314"N	104°47'50.497"W	0.65	
9163.00	90.610	178.060	7373.85	1578.57	-1575.44	540.75	40°13'59.425"N	104°47'50.468"W	1.12	
9253.00	91.190	179.040	7372.43	1668.54	-1665.40	543.02	40°13'58.536"N	104°47'50.439"W	1.27	
9343.00	89.960	179.340	7371.53	1758.53	-1755.39	544.30	40°13'57.646"N	104°47'50.422"W	1.41	
9433.00	89.100	179.440	7372.27	1848.53	-1845.38	545.25	40°13'56.757"N	104°47'50.410"W	0.96	
9523.00	89.500	179.520	7373.37	1938.52	-1935.37	546.07	40°13'55.868"N	104°47'50.399"W	0.45	
9613.00	89.750	179.780	7373.96	2028.52	-2025.36	546.62	40°13'54.978"N	104°47'50.392"W	0.40	
9703.00	90.000	180.010	7374.15	2118.51	-2115.36	546.78	40°13'54.089"N	104°47'50.390"W	0.38	
9793.00	89.930	179.680	7374.21	2208.51	-2205.36	547.03	40°13'53.200"N	104°47'50.387"W	0.37	
9883.00	90.180	179.580	7374.12	2298.51	-2295.36	547.61	40°13'52.310"N	104°47'50.380"W	0.30	
9973.00	89.530	180.920	7374.35	2388.51	-2385.36	547.22	40°13'51.421"N	104°47'50.385"W	1.65	
10063.00	89.440	180.580	7375.16	2478.49	-2475.35	546.04	40°13'50.532"N	104°47'50.400"W	0.39	
10153.00	89.260	180.590	7376.18	2568.47	-2565.34	545.12	40°13'49.643"N	104°47'50.412"W	0.20	
10243.00	89.320	180.310	7377.30	2658.45	-2655.33	544.41	40°13'48.753"N	104°47'50.421"W	0.32	
10333.00	89.660	179.480	7378.10	2748.45	-2745.32	544.58	40°13'47.864"N	104°47'50.419"W	1.00	
10423.00	90.610	180.050	7377.88	2838.45	-2835.32	544.95	40°13'46.975"N	104°47'50.414"W	1.23	
10513.00	90.670	180.250	7376.88	2928.44	-2925.31	544.71	40°13'46.085"N	104°47'50.417"W	0.23	
10603.00	90.950	180.230	7375.61	3018.42	-3015.30	544.33	40°13'45.196"N	104°47'50.422"W	0.31	
10693.00	90.090	180.560	7374.79	3108.41	-3105.30	543.71	40°13'44.307"N	104°47'50.430"W	1.02	
10783.00	90.550	180.460	7374.29	3198.40	-3195.29	542.91	40°13'43.417"N	104°47'50.440"W	0.52	
10873.00	90.800	180.000	7373.23	3288.39	-3285.28	542.55	40°13'42.528"N	104°47'50.445"W	0.58	
10963.00	91.440	180.010	7371.47	3378.37	-3375.27	542.54	40°13'41.639"N	104°47'50.445"W	0.71	
11053.00	90.180	179.630	7370.20	3468.36	-3465.25	542.83	40°13'40.750"N	104°47'50.442"W	1.46	
11143.00	89.930	179.460	7370.11	3558.36	-3555.25	543.54	40°13'39.860"N	104°47'50.432"W	0.34	
11233.00	89.690	179.420	7370.41	3648.36	-3645.25	544.42	40°13'38.971"N	104°47'50.421"W	0.27	
11323.00	89.690	178.970	7370.89	3738.35	-3735.24	545.69	40°13'38.082"N	104°47'50.405"W	0.50	



Actual Wellpath Report

DCP 37C-17HZ AWP

Page 5 of 7



REFERENCE WELLPATH IDENTIFICATION

Operator	KERR-MCGEE OIL & GAS ONSHORE LP	Slot	SLOT#30 DCP 37C-17HZ (1988' FSL & 2057' FEL, SEC.08)
Area	COLORADO	Well	DCP 37C-17HZ
Field	WELD COUNTY (KERR MCGEE)	Wellbore	DCP 37C-17HZ AWP
Facility	SEC.08-T3N-R66W		

WELLPATH DATA (169 stations)

MD [ft]	Inclination [°]	Azimuth [°]	TVD [ft]	Vert Sect [ft]	North [ft]	East [ft]	Latitude	Longitude	DLS [°/100ft]	Comments
11413.00	89.510	178.850	7371.52	3828.34	-3825.22	547.40	40°13'37.192"N	104°47'50.383"W	0.24	
11503.00	89.450	178.920	7372.34	3918.33	-3915.20	549.15	40°13'36.303"N	104°47'50.360"W	0.10	
11593.00	89.290	178.670	7373.33	4008.32	-4005.17	551.04	40°13'35.414"N	104°47'50.336"W	0.33	
11683.00	89.940	178.870	7373.93	4098.30	-4095.15	552.97	40°13'34.525"N	104°47'50.311"W	0.76	
11773.00	89.630	178.820	7374.27	4188.29	-4185.13	554.79	40°13'33.636"N	104°47'50.288"W	0.35	
11863.00	90.370	178.510	7374.27	4278.28	-4275.10	556.88	40°13'32.747"N	104°47'50.261"W	0.89	
11953.00	90.680	178.740	7373.45	4368.26	-4365.07	559.04	40°13'31.858"N	104°47'50.233"W	0.43	
12043.00	90.990	178.370	7372.14	4458.23	-4455.04	561.31	40°13'30.969"N	104°47'50.203"W	0.54	
12133.00	90.090	179.130	7371.29	4548.21	-4545.01	563.28	40°13'30.080"N	104°47'50.178"W	1.31	
12223.00	90.830	179.440	7370.56	4638.21	-4635.00	564.40	40°13'29.190"N	104°47'50.164"W	0.89	
12313.00	90.150	179.360	7369.80	4728.20	-4724.99	565.34	40°13'28.301"N	104°47'50.152"W	0.76	
12403.00	90.490	180.990	7369.29	4818.20	-4814.98	565.07	40°13'27.412"N	104°47'50.155"W	1.85	
12493.00	88.640	181.300	7369.98	4908.16	-4904.96	563.27	40°13'26.522"N	104°47'50.178"W	2.08	
12583.00	88.580	180.650	7372.16	4998.11	-4994.92	561.74	40°13'25.634"N	104°47'50.198"W	0.73	
12673.00	88.980	180.780	7374.08	5088.07	-5084.89	560.61	40°13'24.744"N	104°47'50.213"W	0.47	
12763.00	89.230	181.650	7375.48	5178.03	-5174.86	558.71	40°13'23.855"N	104°47'50.237"W	1.01	
12853.00	88.640	181.060	7377.15	5267.97	-5264.82	556.58	40°13'22.966"N	104°47'50.265"W	0.93	
12943.00	89.560	181.580	7378.57	5357.92	-5354.78	554.51	40°13'22.077"N	104°47'50.292"W	1.17	
13033.00	90.950	181.960	7378.17	5447.86	-5444.74	551.73	40°13'21.188"N	104°47'50.327"W	1.60	
13123.00	92.360	182.210	7375.57	5537.74	-5534.64	548.45	40°13'20.300"N	104°47'50.370"W	1.59	
13213.00	92.090	181.760	7372.07	5627.60	-5624.51	545.34	40°13'19.412"N	104°47'50.410"W	0.58	
13303.00	92.520	181.410	7368.45	5717.47	-5714.41	542.85	40°13'18.524"N	104°47'50.442"W	0.62	
13393.00	91.510	181.050	7365.29	5807.38	-5804.33	540.92	40°13'17.635"N	104°47'50.467"W	1.19	
13483.00	90.520	180.630	7363.69	5897.35	-5894.30	539.60	40°13'16.746"N	104°47'50.484"W	1.19	
13573.00	89.720	180.310	7363.51	5987.34	-5984.30	538.86	40°13'15.857"N	104°47'50.493"W	0.96	
13663.00	88.890	179.250	7364.60	6077.33	-6074.29	539.21	40°13'14.967"N	104°47'50.489"W	1.50	
13753.00	89.850	180.000	7365.59	6167.32	-6164.28	539.80	40°13'14.078"N	104°47'50.481"W	1.35	
13843.00	88.550	179.320	7366.84	6257.31	-6254.27	540.33	40°13'13.189"N	104°47'50.475"W	1.63	
13933.00	88.980	179.720	7368.78	6347.29	-6344.24	541.08	40°13'12.300"N	104°47'50.465"W	0.65	
14023.00	89.590	179.640	7369.91	6437.28	-6434.24	541.59	40°13'11.410"N	104°47'50.458"W	0.68	
14113.00	90.150	179.480	7370.11	6527.28	-6524.23	542.28	40°13'10.521"N	104°47'50.449"W	0.65	
14203.00	90.760	179.940	7369.40	6617.28	-6614.23	542.73	40°13'09.632"N	104°47'50.444"W	0.85	
14312.00	90.950	179.170	7367.77	6726.27	-6723.21	543.58	40°13'08.555"N	104°47'50.433"W	0.73	LAST BHI MWD SURVEY
14366.00	90.950	179.170	7366.87	6780.26	-6777.20	544.36	40°13'08.021"N	104°47'50.423"W	0.00	PROJECTION TO BIT

REFERENCE WELLPATH IDENTIFICATION

Operator	KERR-MCGEE OIL & GAS ONSHORE LP	Slot	SLOT#30 DCP 37C-17HZ (1988' FSL & 2057' FEL, SEC.08)
Area	COLORADO	Well	DCP 37C-17HZ
Field	WELD COUNTY (KERR MCGEE)	Wellbore	DCP 37C-17HZ AWB
Facility	SEC.08-T3N-R66W		

HOLE & CASING SECTIONS - Ref Wellbore: DCP 37C-17HZ AWB Ref Wellpath: DCP 37C-17HZ AWP

String/Diameter	Start MD [ft]	End MD [ft]	Interval [ft]	Start TVD [ft]	End TVD [ft]	Start N/S [ft]	Start E/W [ft]	End N/S [ft]	End E/W [ft]
13.5in Open Hole	13.00	977.00	964.00	13.00	976.95	0.00	0.00	6.05	-2.55
9.625in Casing Surface	13.00	977.00	964.00	13.00	976.95	0.00	0.00	6.05	-2.55
8.75in Open Hole	977.00	7810.00	6833.00	976.95	7372.71	6.05	-2.55	-222.66	534.09
7in Casing Intermediate	13.00	7796.00	7783.00	13.00	7372.10	0.00	0.00	-208.67	534.11
6.125in Open Hole	7810.00	14366.00	6556.00	7372.71	7366.87	-222.66	534.09	-6777.20	544.36

TARGETS

Name	MD [ft]	TVD [ft]	North [ft]	East [ft]	Grid East [US ft]	Grid North [US ft]	Latitude	Longitude	Shape
SEC.08-T3N-R66W HARDLINES (460' SETBACKS)		4881.00	184.32	1498.93	3197118.41	1330331.47	40°14'16.814"N	104°47'38.112"W	polygon
SEC.08-T3N-R66W SECTION LINES		4881.00	184.32	1498.93	3197118.41	1330331.47	40°14'16.814"N	104°47'38.112"W	polygon
SEC.17-T3N-R66W HARDLINES (460' SETBACKS)		4881.00	184.32	1498.93	3197118.41	1330331.47	40°14'16.814"N	104°47'38.112"W	polygon
SEC.17-T3N-R66W SECTION LINES		4881.00	184.32	1498.93	3197118.41	1330331.47	40°14'16.814"N	104°47'38.112"W	polygon
LEONARD L17-2 (150' RADIUS)		7164.00	-2610.71	66.39	3195708.06	1327525.33	40°13'49.194"N	104°47'56.584"W	circle
LEONARD L 17-18 (150' RADIUS)		7167.00	-3295.19	-394.12	3195252.99	1326837.26	40°13'42.430"N	104°48'02.521"W	circle
LEONARD L17-7 (150' RADIUS)		7171.00	-3965.95	102.94	3195755.32	1326170.48	40°13'35.802"N	104°47'56.113"W	circle
DCP 37C-17HZ LANDBOX		7346.00	0.00	0.00	3195621.05	1330135.32	40°14'14.993"N	104°47'57.440"W	polygon
DCP 37C-17HZ BHL ON PLAT (460' FSL & 1525' FEL, SEC.17) REV-1		7350.00	-6802.61	572.50	3196247.25	1323337.75	40°13'07.770"N	104°47'50.060"W	point

WELLPATH COMPOSITION - Ref Wellbore: DCP 37C-17HZ AWB Ref Wellpath: DCP 37C-17HZ AWP

Start MD [ft]	End MD [ft]	Positional Uncertainty Model	Log Name/Comment	Wellbore
13.00	885.00	Generic gyro - continuous (Standard)	MS ENERGY SERVICES GYRO SURVEYS <113-885>	DCP 37C-17HZ AWB
885.00	7751.00	NaviTrak (MagCorr)	BHI NAVITRAK MWD 8 3/4" <991-7751>	DCP 37C-17HZ AWB
7751.00	14312.00	OnTrak (MagCorr)	BHI ONTRAK MWD 6 1/8" <7844-14312>	DCP 37C-17HZ AWB
14312.00	14366.00	Blind Drilling (std)	Projection to bit	DCP 37C-17HZ AWB



Actual Wellpath Report

DCP 37C-17HZ AWP

Page 7 of 7



REFERENCE WELLPATH IDENTIFICATION

Operator	KERR-MCGEE OIL & GAS ONSHORE LP	Slot	SLOT#30 DCP 37C-17HZ (1988' FSL & 2057' FEL, SEC.08)
Area	COLORADO	Well	DCP 37C-17HZ
Field	WELD COUNTY (KERR MCGEE)	Wellbore	DCP 37C-17HZ AWB
Facility	SEC.08-T3N-R66W		

WELLPATH COMMENTS

MD [ft]	Inclination [°]	Azimuth [°]	TVD [ft]	Comment
13.00	0.000	244.010	13.00	TIE ON
113.00	0.180	244.010	113.00	BEGIN GYRO SURVEYS
885.00	1.250	355.050	884.97	TIE ONTO GYRO SURVEYS
991.00	0.930	357.430	990.95	BEGIN BHI MWD SURVEYS
7796.00	87.154	180.104	7372.10	7" CASING POINT
14312.00	90.950	179.170	7367.77	LAST BHI MWD SURVEY
14366.00	90.950	179.170	7366.87	PROJECTION TO BIT