

WELL LOCATION CERTIFICATE

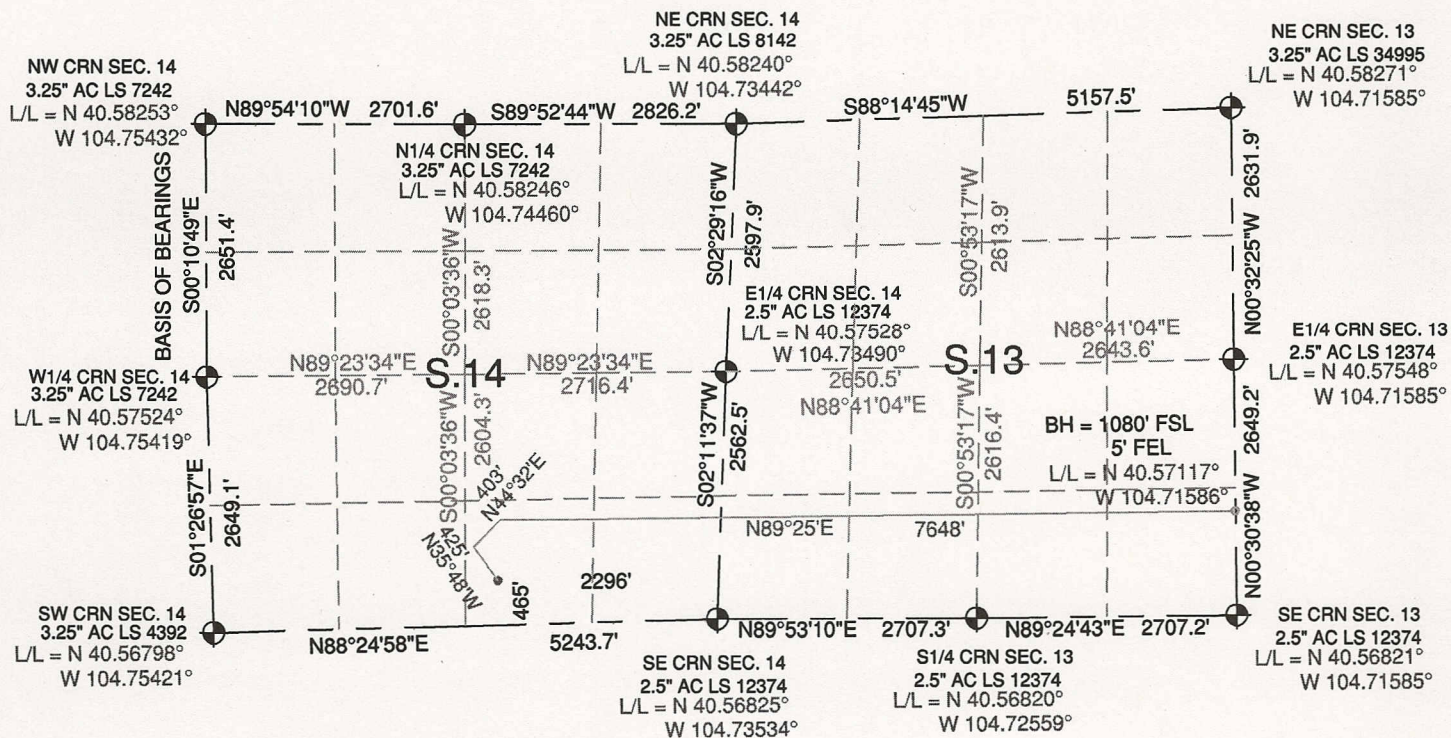
SECTIONS 13 & 14, TOWNSHIP 7 NORTH, RANGE 66 WEST, 6TH P.M.

NOTES:

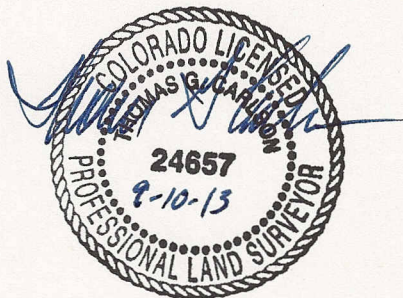
THIS IS A HORIZONTAL DRILL WELL.
BOTTOM HOLE AT 1080' FSL, 5' FEL, S13.
WELL LOCATION FALLS IN A PASTURE/HAY FIELD.
SEE LOCATION DRAWING FOR IMPROVEMENTS.

GROUND ELEVATION = 4900'

LAT. & LONG. = N 40.56941°
W 104.74354°

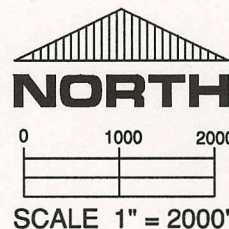


I HEREBY STATE TO PDC ENERGY THAT THE SURFACE LOCATION FOR THE PROPOSED WELL TRACY 14P-432 IS LOCATED 465' FSL & 2296' FEL, SEC. 14, T7N, R66W, 6PM.



LEGEND

- FOUND MONUMENT
- PROPOSED WELL
- BOTTOM HOLE



ELEVATION SOURCE = USGS 7.5' QUAD. MAP CONTOURS
NGVD 1929 DATUM.

LAT. & LONG. ARE DIFFERENTIALLY CORRECTED (WGS'84)
USING (DGPS) WITH (PDOP) VALUE OF 1.4.

SHOWN DISTANCES ARE FIELD MEASURED WITH
EXTERIOR SECTION LINES DRAWN TO SCALE.

DISTANCES TO WELL SHOWN PERPENDICULAR
TO SECTION LINES.

THOMAS G. CARLSON, PLS 24657
HORSESHOE SURVEYING, LLC

THIS IS NOT A MONUMENTED BOUNDARY SURVEY, IT IS ONLY A
DRAWING INTENDED TO DEPICT THE WELL LOCATION TO SECTION LINES.

PREPARED BY: HORSESHOE SURVEYING, LLC
PO BOX 150458
LAKEWOOD, CO 80215
(720)872-0196

WELL NAME: TRACY 14P-432

LOCATION: WELD COUNTY, CO
SE1/4, SEC. 14, T7N, R66W, 6TH P.M.

DRAWING DATE:
9-10-13

FIELD DATE:
7-20-13

BY: TGC

CHKD:

JOB NO.

SHEET NO.

1 OF 1