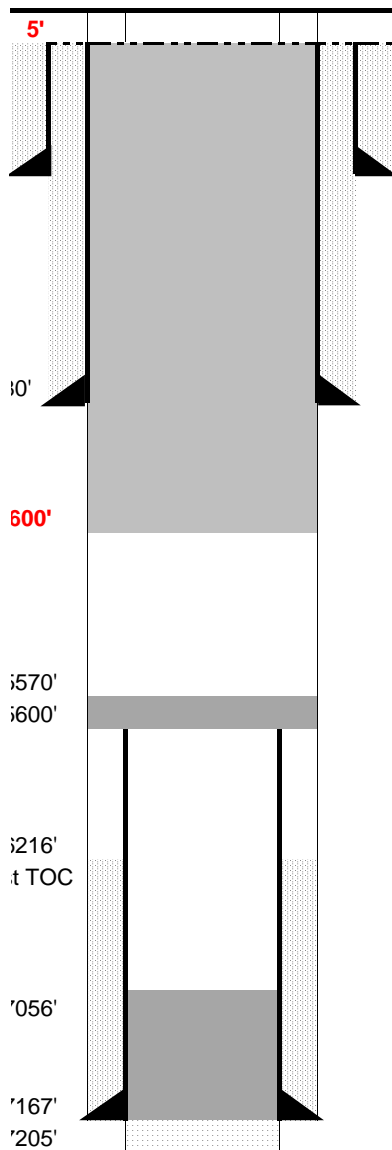


**WELL NAME:** Vessels State #1  
**OPERATOR:** Vessels Tom - 93206  
**COMP ZONE:** J Sand  
**LOCATION:** 9N 61W S36 NE SW

**COUNTY:** Weld  
**STATE:** Colorado  
**API :** 05-123-07673

**SPUD:** 3/8/73  
**P&A:** 9/18/73  
**GL:** 4,966'



#### SURFACE CASING

DEPTH: 180' SIZE: 8 5/8" GRADE: J-55 WT (#/ft): 24.0  
CEMENT: 135 sx cement + 2% CaCl  
COMMENTS: \_\_\_\_\_

#### PRODUCTION CASING

DEPTH: 7,167' SIZE: 5 1/2" GRADE: J-55 WT (#/ft): 17 & 15.5  
CEMENT: 150 sx 50/50 Pozmix Cement + 2% gel + 10% salt TOC: 6216' (Est)  
COMMENTS: \_\_\_\_\_

OPEN HOLE: 7,167' - 7,205' PROD ZONE 1: J Sand  
PERFS: \_\_\_\_\_ ZONE 2: \_\_\_\_\_  
PERFS: \_\_\_\_\_ ZONE 3: \_\_\_\_\_

#### PREVIOUS PLUGS

RECOVERED: 5600' SIZE: 5 1/2"  
CMT 1: 7,205' - 7,056' COMMENT: Sand + 10 sk cement plug  
CMT 2: 5,600' - 5,570' COMMENT: 10 sx cement plug on top of stub  
CMT 3: 428' - 134' COMMENT: 115 sk cement plug  
CMT 4: 30' - 0' COMMENT: 10 sk cement plug at surface  
OTHER: Proposed Plug #1: 175 sx cement from 600' to surface

#### FORMATIONS:

NIOBRARA: 6,309'  
CARLILE 6,636'  
D SAND: 7069'  
J SAND: 7,127'