

WELL NAME:

OPERATOR:

COMP ZONE:

LOCATION:

Sohio State #1

M & T Inc - 52030

J Sand

9N 61W S36 SW SE

COUNTY:

STATE:

API :

Weld

Colorado

05-123-09178

SPUD:

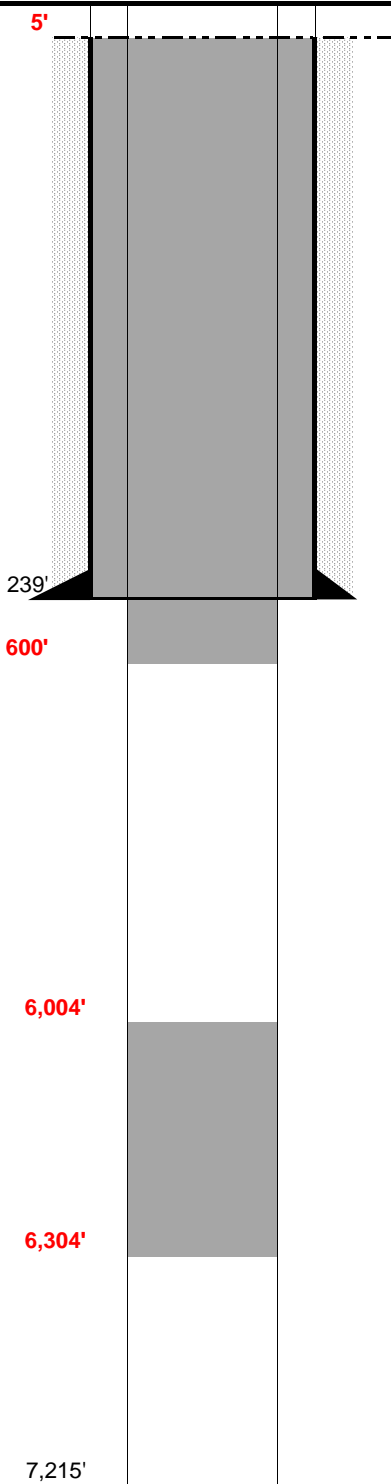
P&A:

GL:

4/7/77

4/15/77

4,968'



SURFACE CASING
DEPTH: 239' SIZE: 8 5/8" GRADE: J-55 WT (#/ft): 24.0
CEMENT: 250 sx "common cement"
COMMENTS:

PRODUCTION CASING
DEPTH: SIZE: GRADE: WT (#/ft):
CEMENT: TOC:
COMMENTS:

PERFS: - PROD ZONE 1:
PERFS: - ZONE 2:
PERFS: - ZONE 3:

PREVIOUS PLUGS
RECOVERED: SIZE:
CMT 1: 239' - 189' COMMENT: 15 sk cement plug
CMT 2: 0' - 33' COMMENT: 10 sx - surface w/ 4" pipe marker
CMT 3: - COMMENT:
OTHER: Proposed Plug 1: 6,304' - 6,004' (300' above the top of the Niobrara)
Proposed Plug 2: 5' - 600' (Surface and Potential FW zone)

FORMATIONS:
NIOBRARA: 6,304'
CODELL: 6,619'
D SAND: 7,057'
J SAND: 7,140'