

RADIAL CEMENT BOND
GAMMA RAY
CCL

Company KERR McGEE ROCKY MOUNTAIN CORP.
Well OSMUN EUNICE M GU #1
Field WATTENBERG
County WELD State CO

Location: API # : 05-123-07647
SHL: 1650' FNL & 1650' FEL SW/NE
SEC 28 TWP 3N RGE 66W
Permanent Datum GL Elevation 4963
Log Measured From KB 10'
Drilling Measured From KB
Other Services
K.B. 4973
D.F. 4972
G.L. 4963

Company KERR McGEE ROCKY MOUNTAIN CORP.
Well OSMUN EUNICE M GU #1
Field WATTENBERG
County WELD
State CO

Date	10-9-2013	10-10-2013
Run Number	1	2
Depth Driller	8015'	8015'
Depth Logger	5050'	1270'
Bottom Logged Interval	5050'	1270'
Top Log Interval	3400'	10'
Open Hole Size	7.875	7.875
Type Fluid	WATER	WATER
Density / Viscosity	1.0	1.0
Max. Recorded Temp.	170	88
Estimated Cement Top	3530	80'
Time Well Ready	7:00am	7:00am
Time Logger on Bottom	7:30am	7:10am
Equipment Number	4310	4310
Location	GREELEY	Greeley,Co
Recorded By	M. JANDREAU	M. JANDREAU
Witnessed By	BILL SMITH	BILL SMITH

Borehole Record				Tubing Record			
Run Number	Bit	From	To	Size	Weight	From	To
ONE							
TWO							

Casing Record	Size	Wgt/Ft	Top	Bottom
Surface String	8.63	24#	0	584'
Prot. String				
Production String	4.5	11.6#	0	T.D.
Liner				

<<< Fold Here >>>

All interpretations are opinions based on inferences from electrical or other measurements and we cannot and do not guarantee the accuracy or correctness of any interpretation, and we shall not, except in the case of gross or willful negligence on our part, be liable or responsible for any loss, costs, damages, or expenses incurred or sustained by anyone resulting from any interpretation made by any of our officers, agents or employees. These interpretations are also subject to our general terms and conditions set out in our current Price Schedule.

Comments

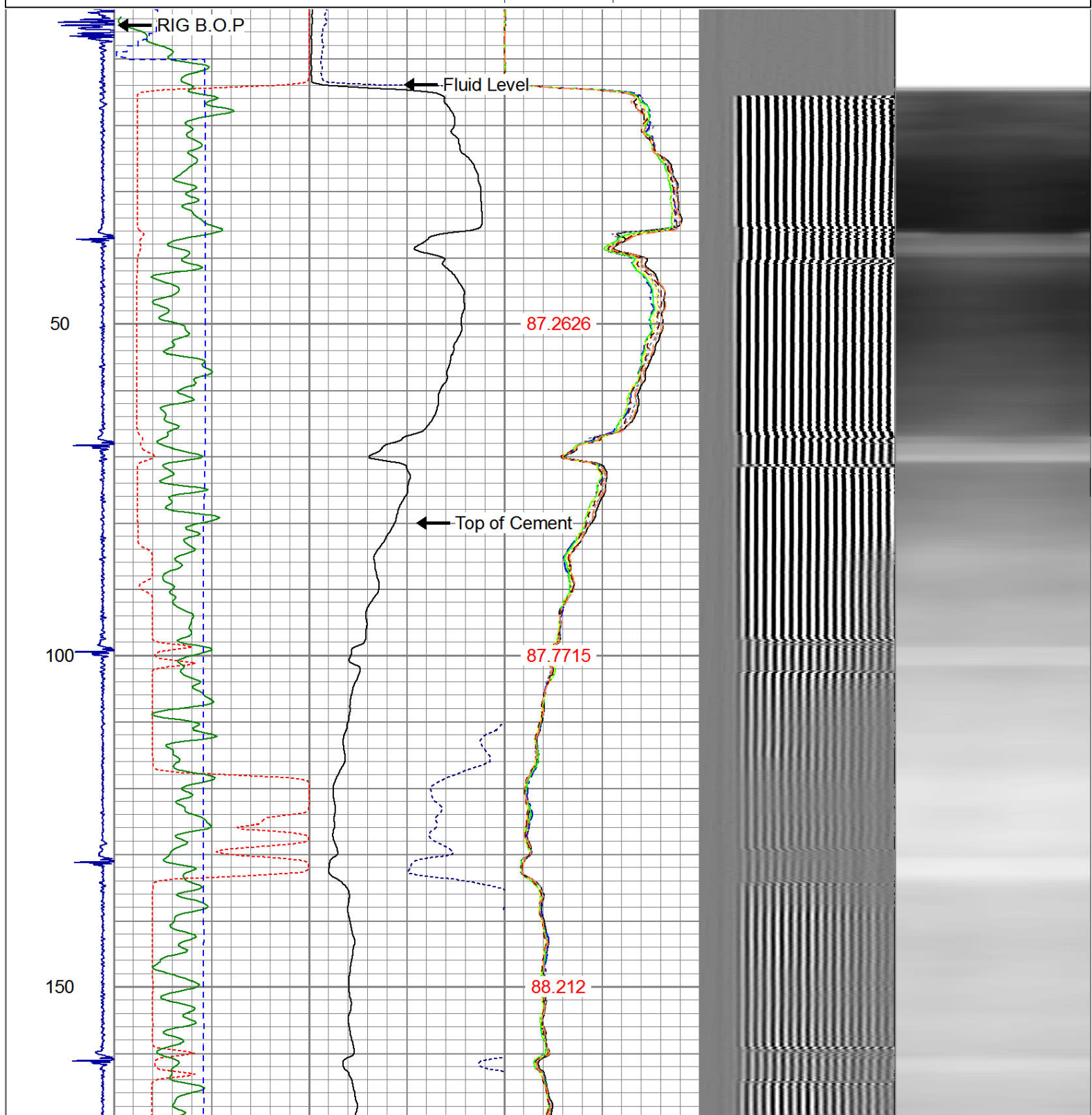
RAN CBL TO VERIFY CEMENT

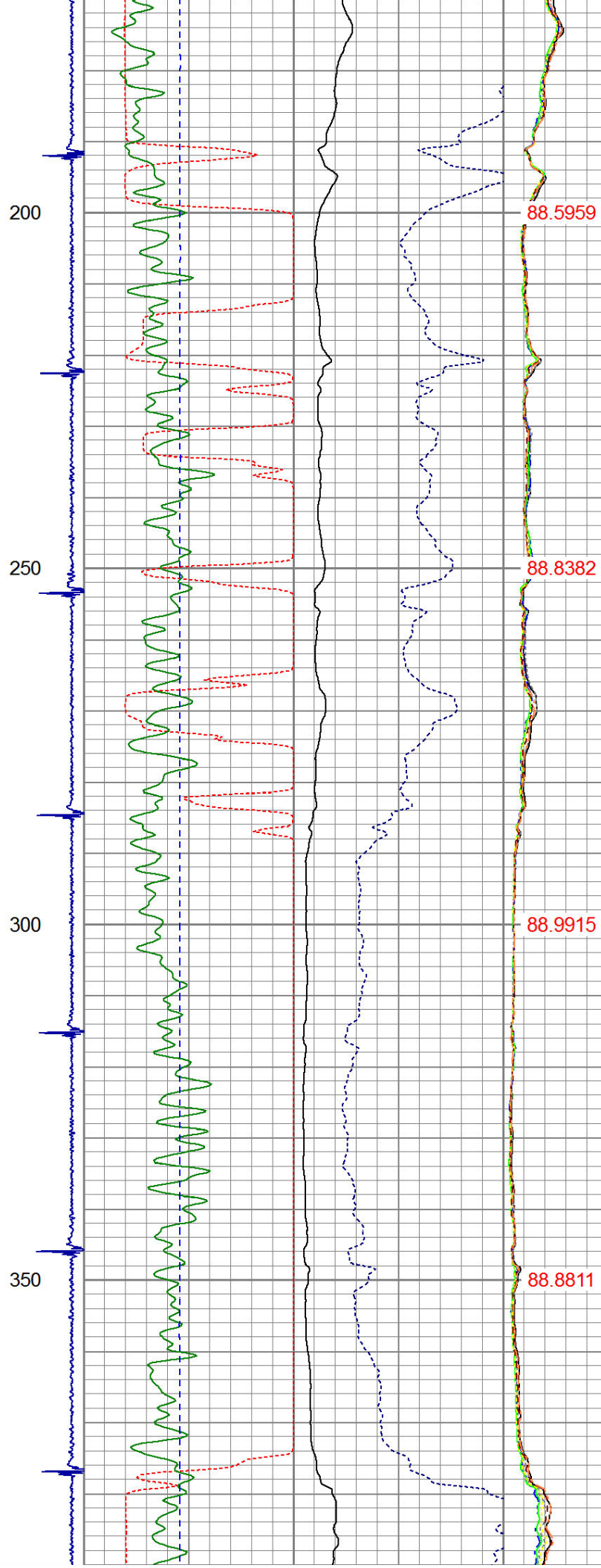
THANK YOU FOR USING IPS !!!!!!!

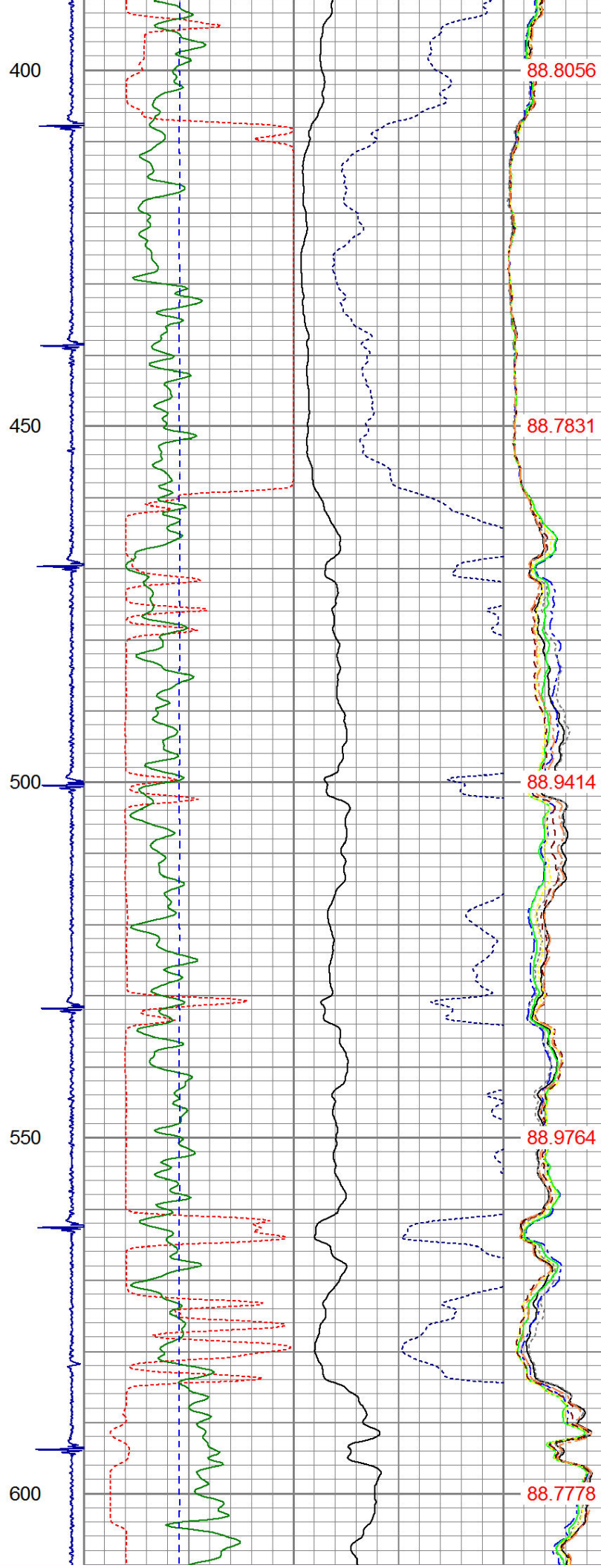
Sensor	Offset (ft)	Schematic	Description	Len (ft)	OD (in)	Wt (lb)

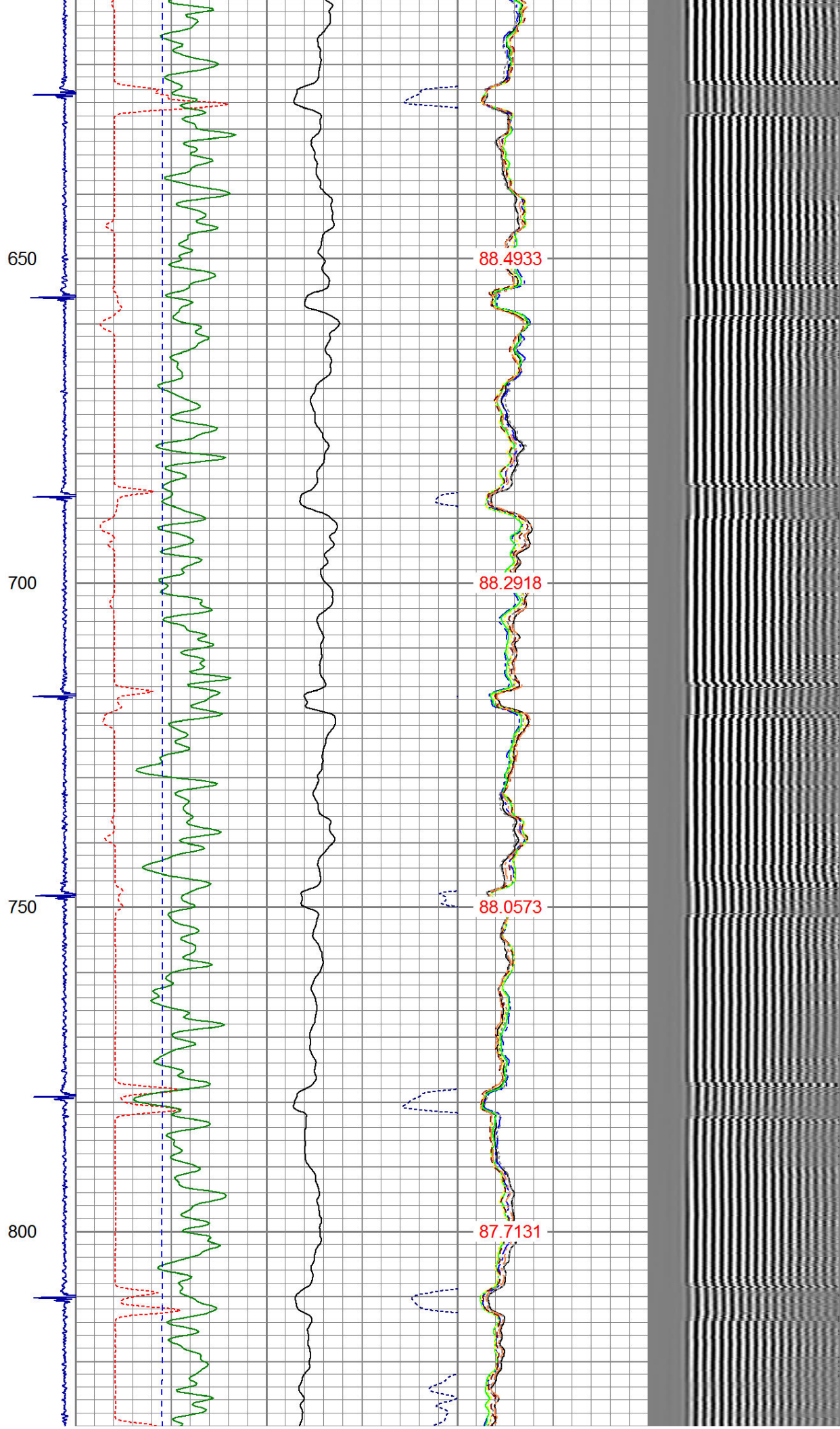
			PTS275	2.83	2.75	
HEADVOLT	14.92					
IntTemp	13.50					
WVF3FT	10.25		RBT-Probe (Base)	8.92	2.75	90.00
WVFCAL	10.25		Probe Radii Bond Tool with Digital Telemetry			
WVFS1	10.25					
WVFS2	10.25					
WVFS3	10.25					
WVFS4	10.25					
WVFS5	10.25					
WVFS6	10.25					
WVFS7	10.25					
WVFS8	10.25					
WVF5FT	9.25					
CNLSC	6.00					
CNSSC	5.17		CNT-Probe_B (275)	1.67	2.75	40.00
			6 bow centralizer			
CCL	3.64					
			GR-Probe (275)	4.33	2.75	30.00
			Probe 2.75"			
GR	0.90					
Dataset: osman eunice m gu #1.db: field/well/run1/pass3 Total Length: 17.75 ft Total Weight: 160.00 lb O.D. 2.75 in						

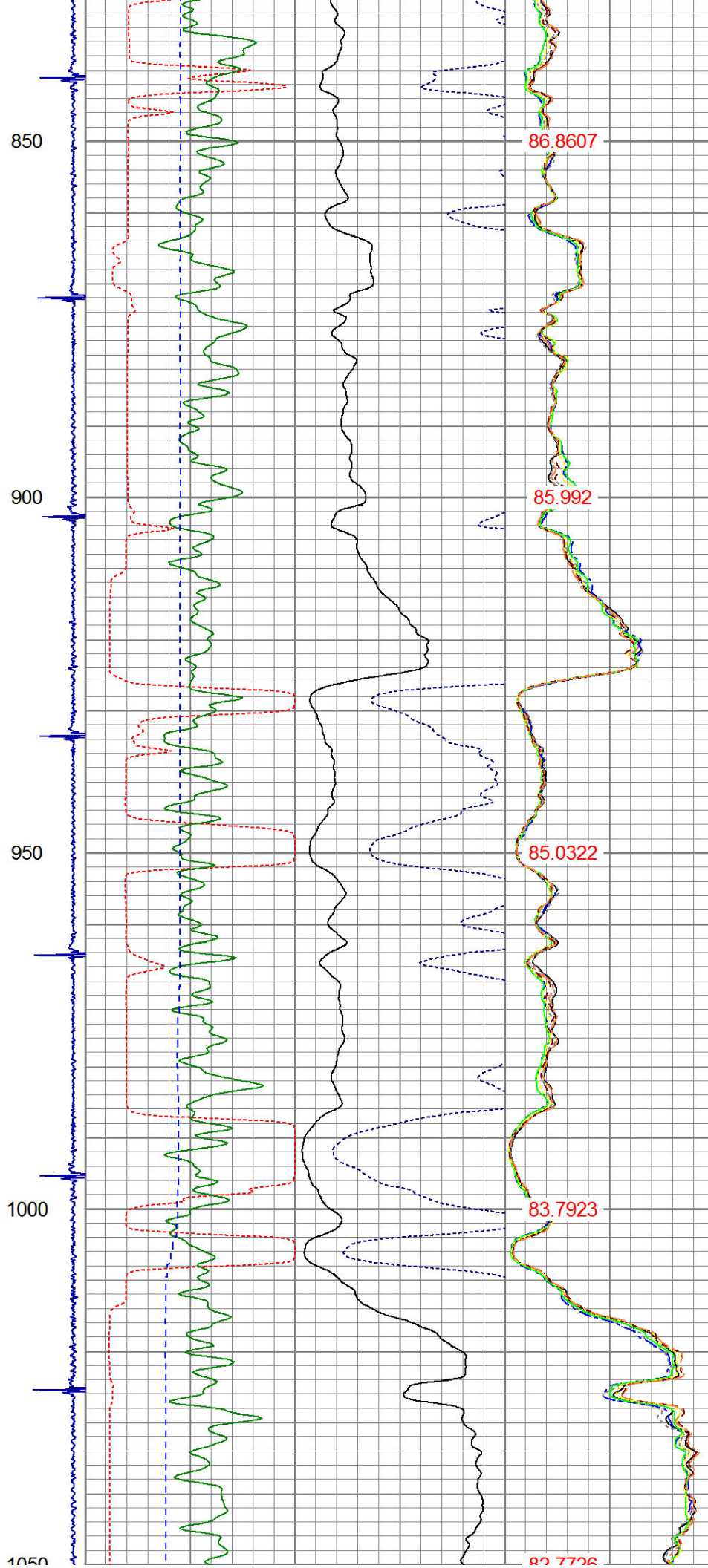
-9	CCL	1	200	TT (usec)	800	0	AMP (mV)	100	0	AMPS1	100	200	VDL	1200	1	Cement Map	8
			0	GR (GAPI)	200	0	AMPx5 (mV)	20	0	AMPS2	100				1		100
			200	GR (GAPI)	400				0	AMPS4	100						
			0	LSPD (ft/min)	250				0	AMPS5	100						
									0	AMPS6	100						
									0	AMPS7	100						
									0	AMPS8	100						
										IntTemp							
										(degF)							

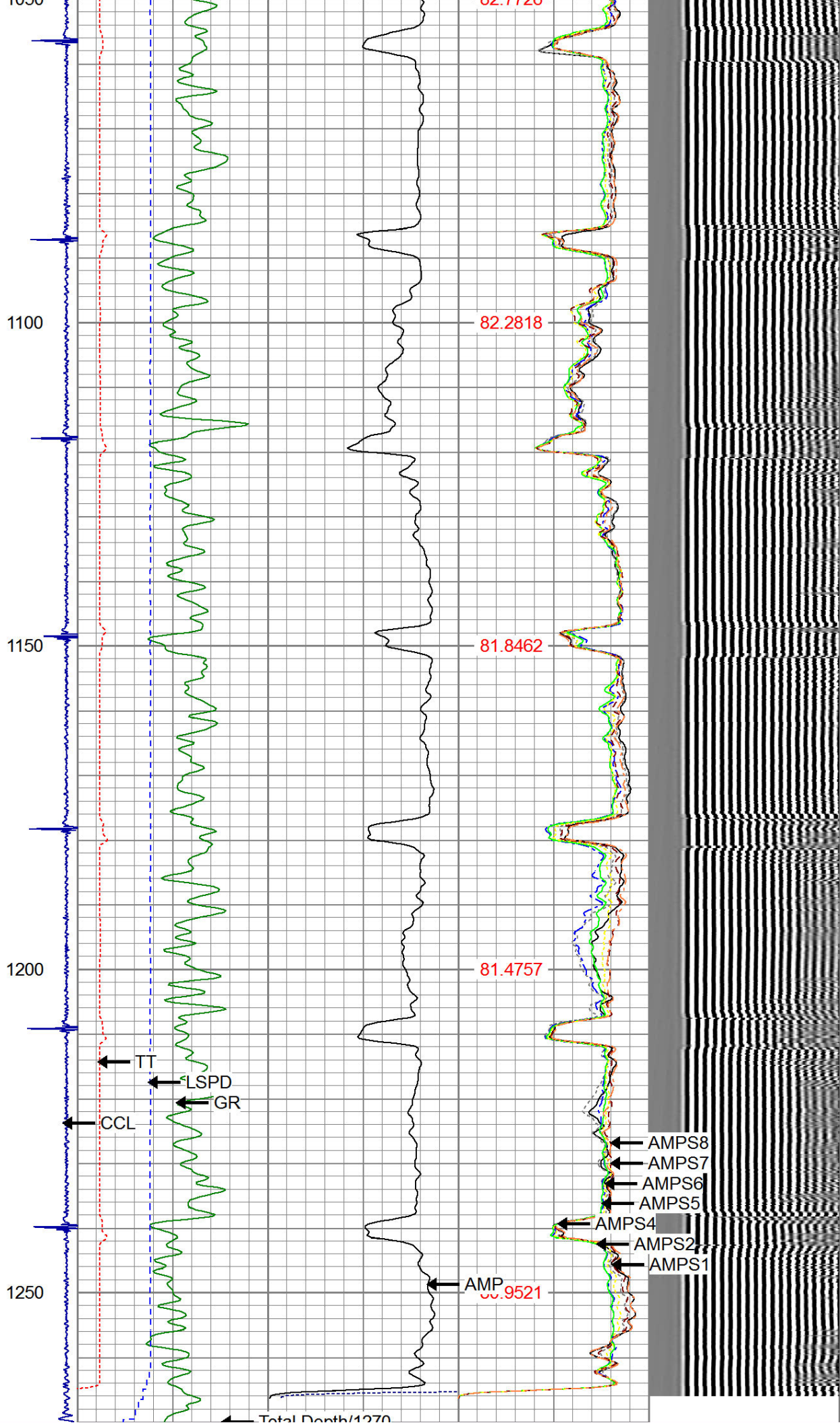


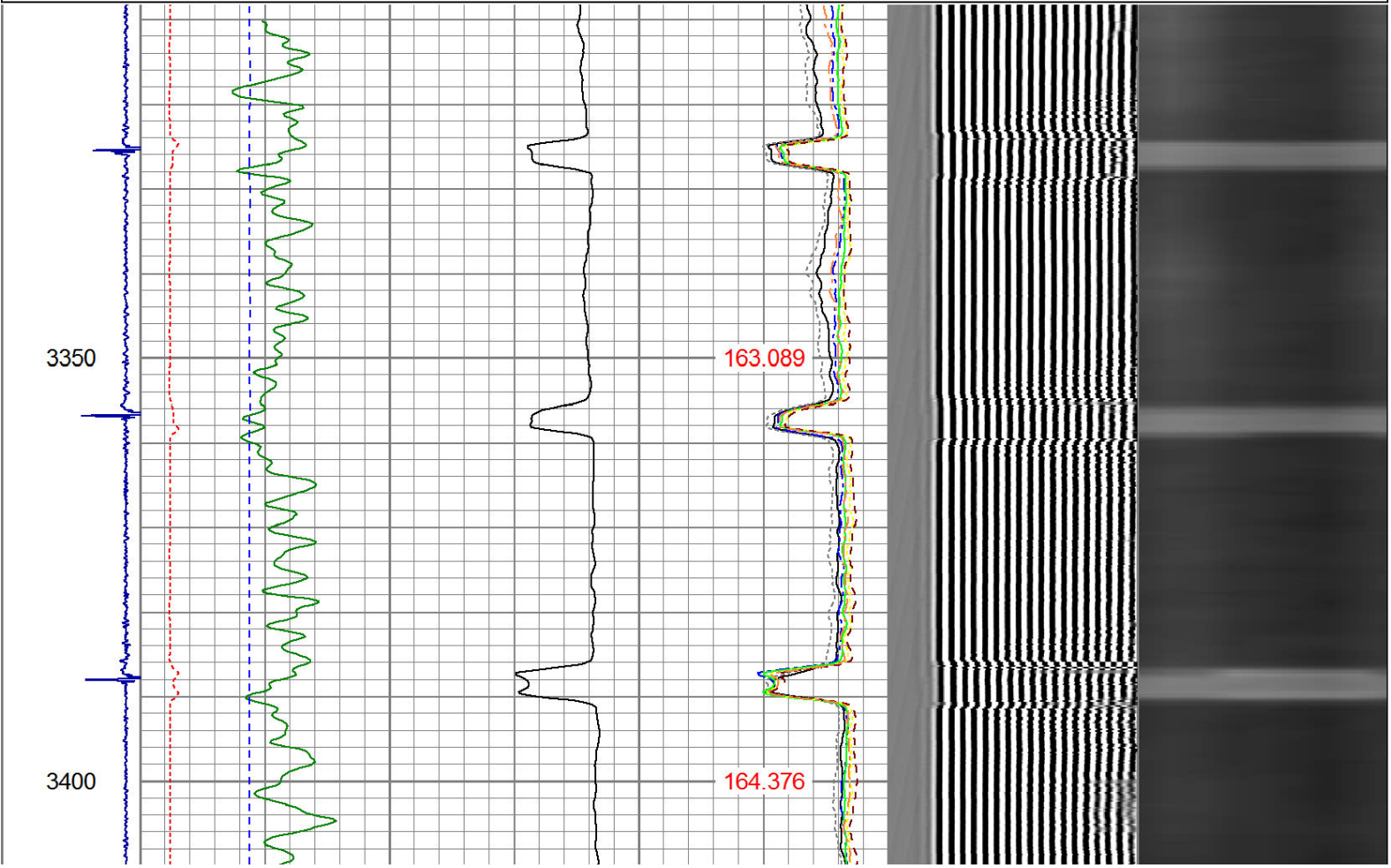
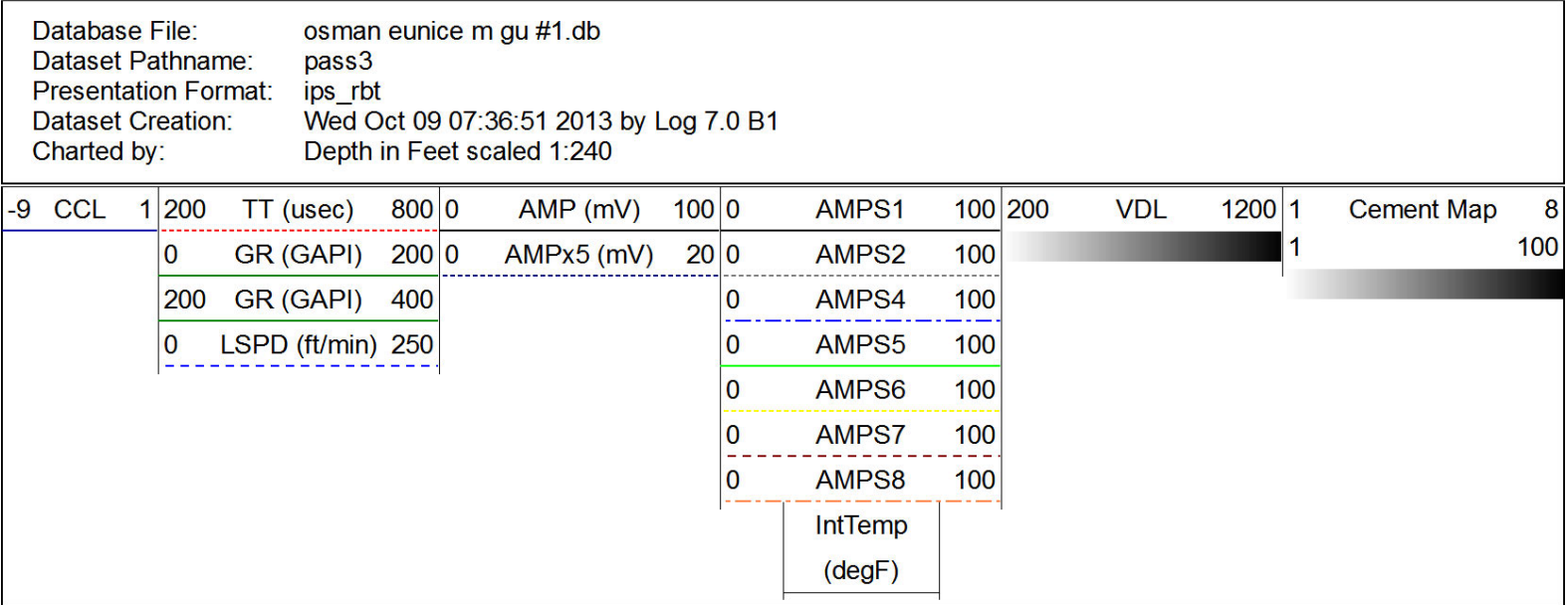
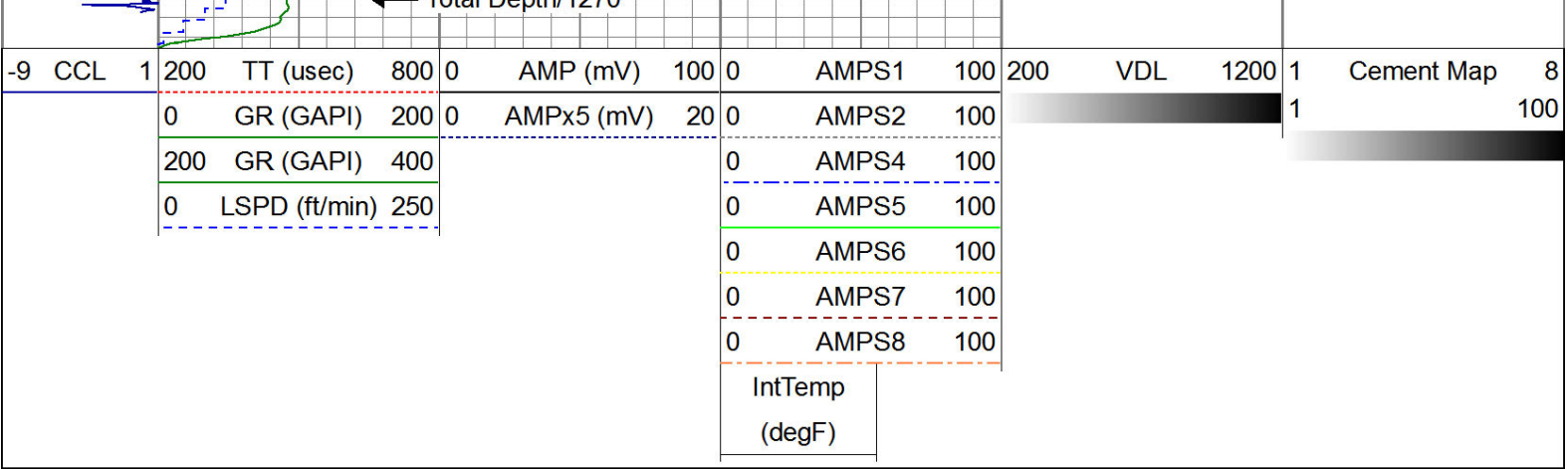


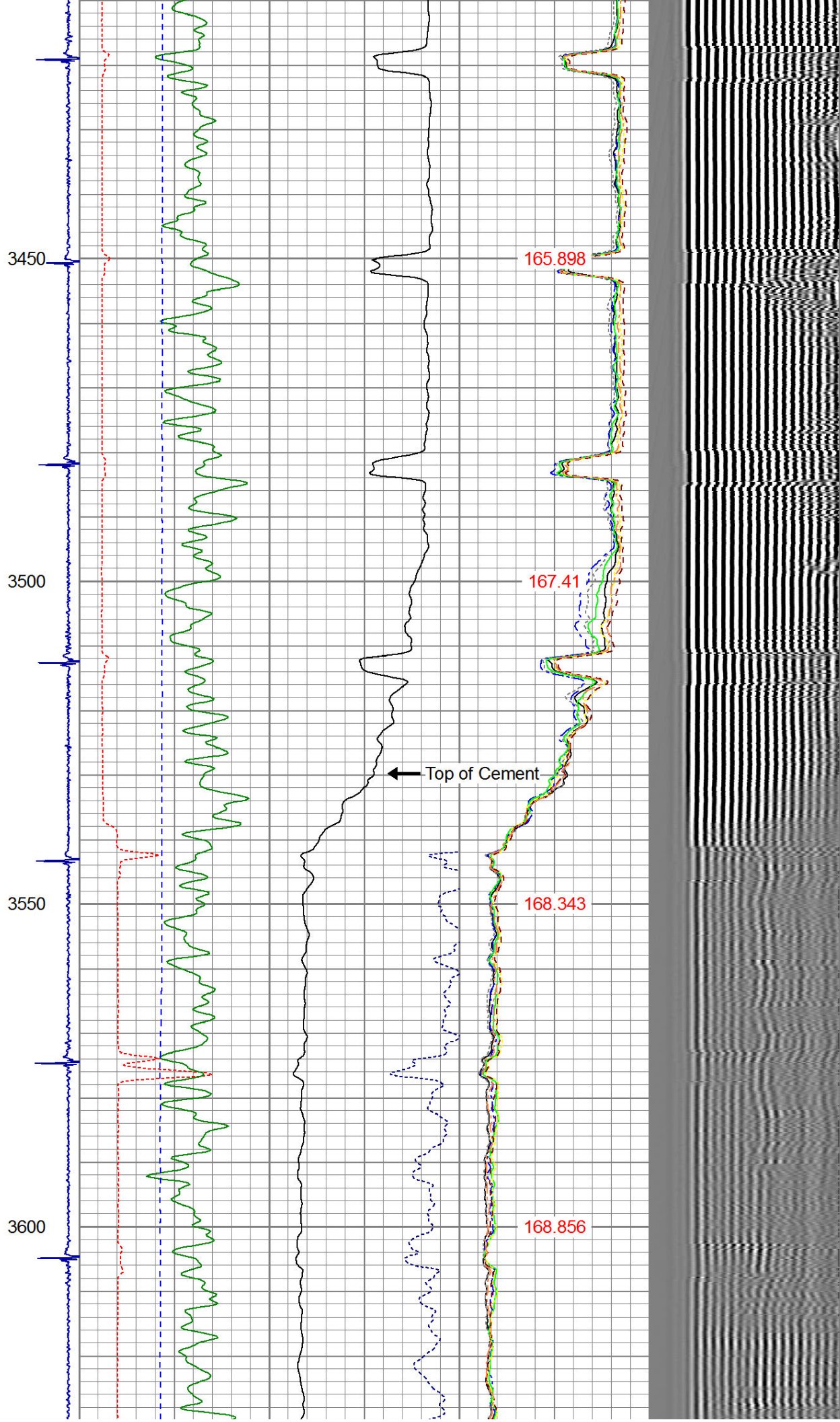


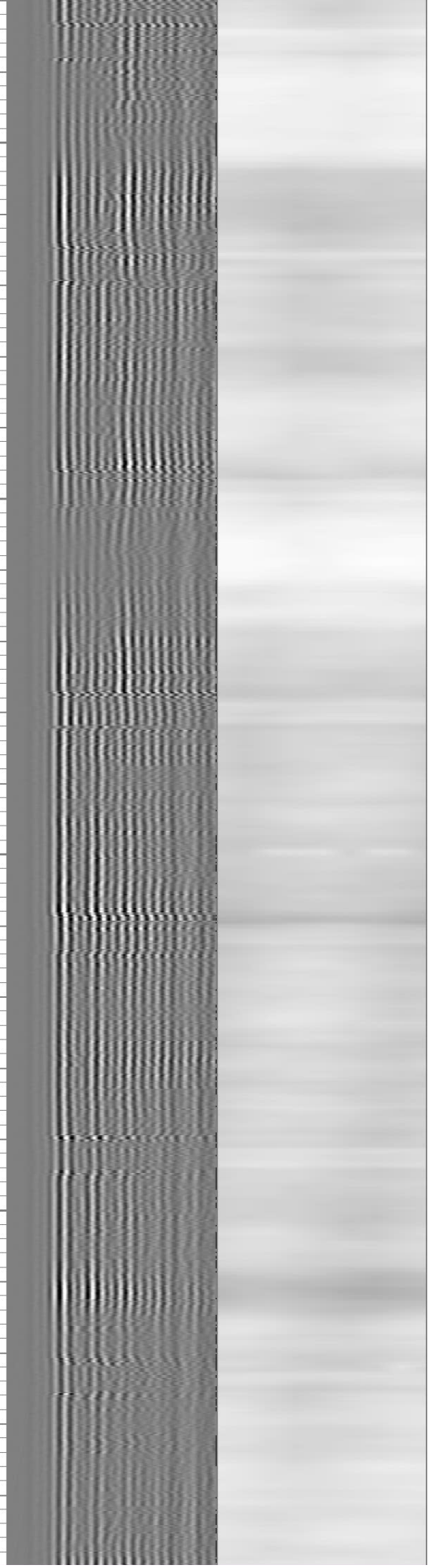
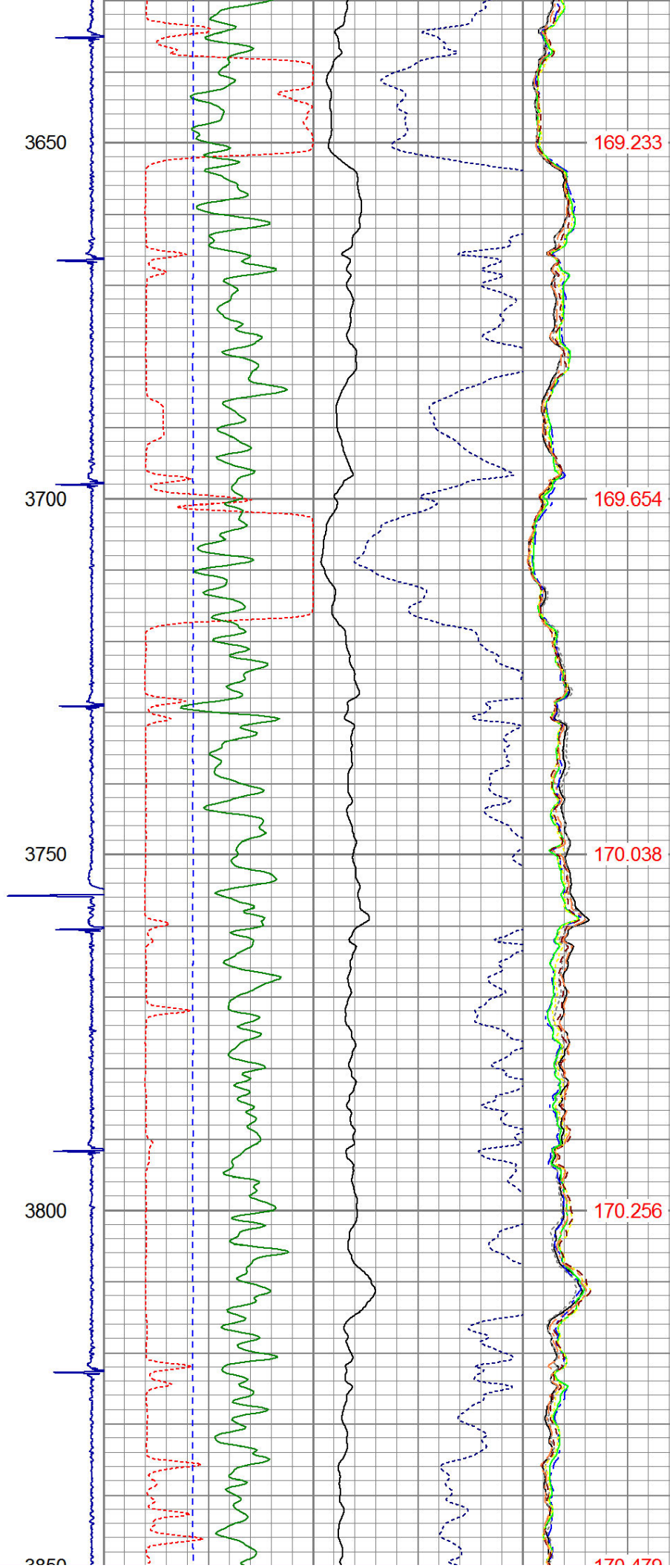


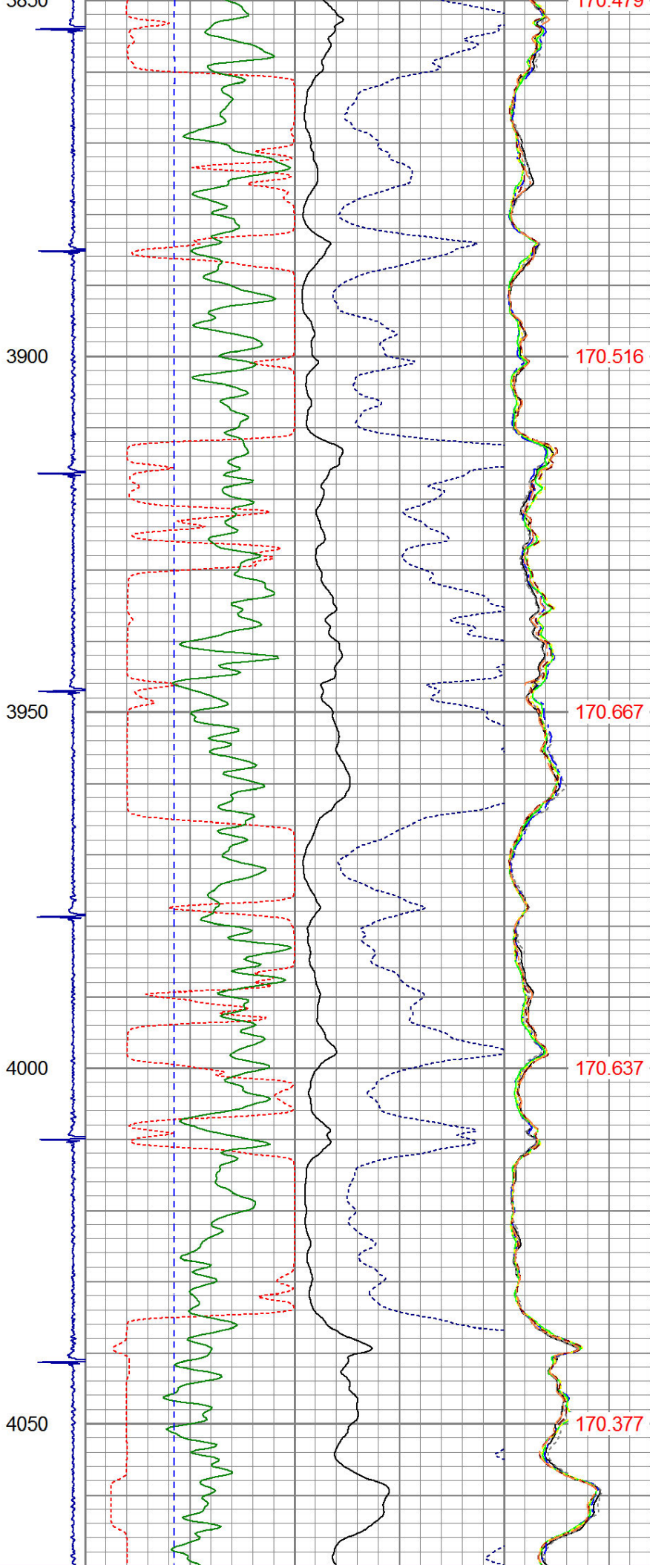












4100

4150

4200

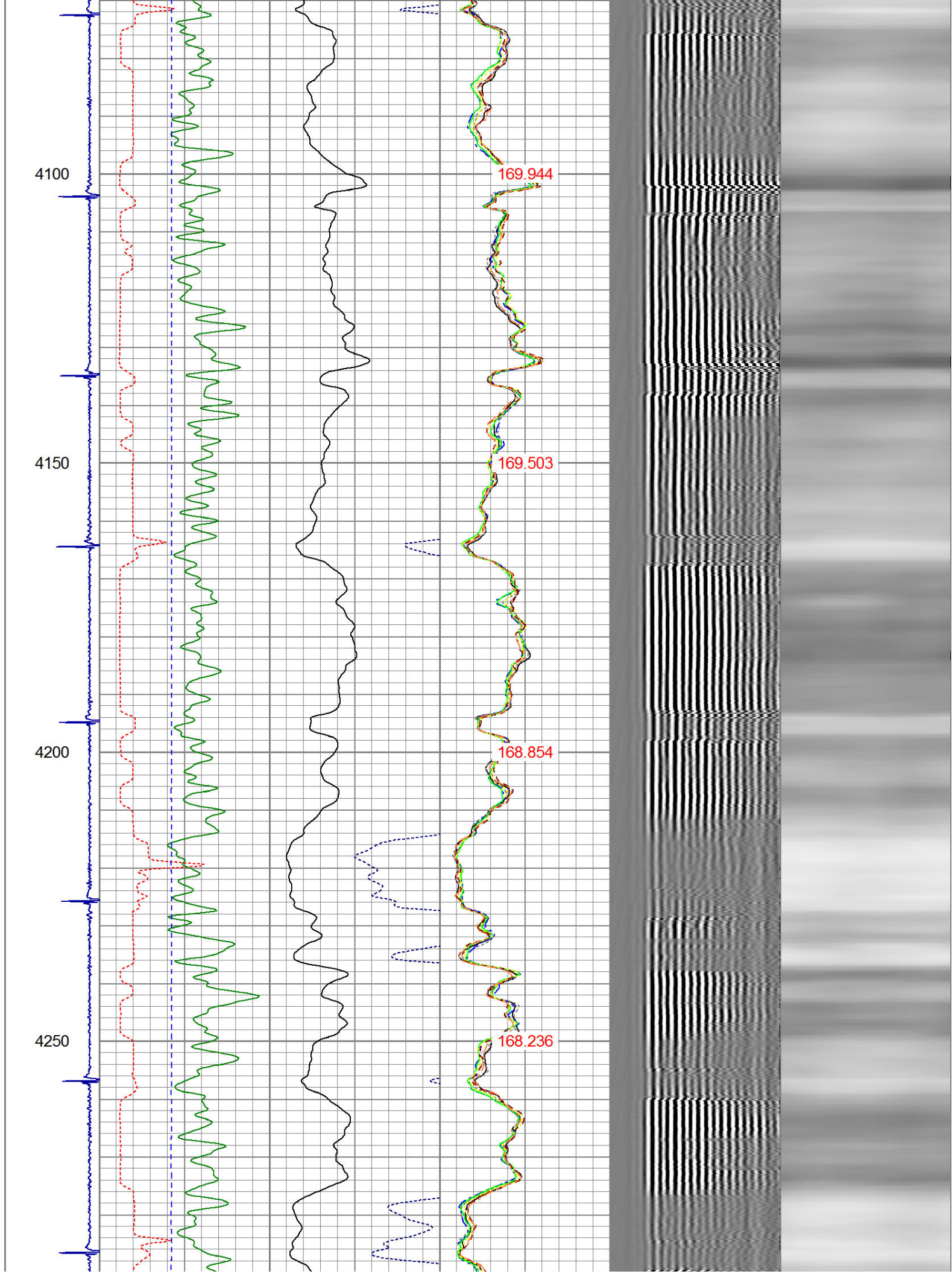
4250

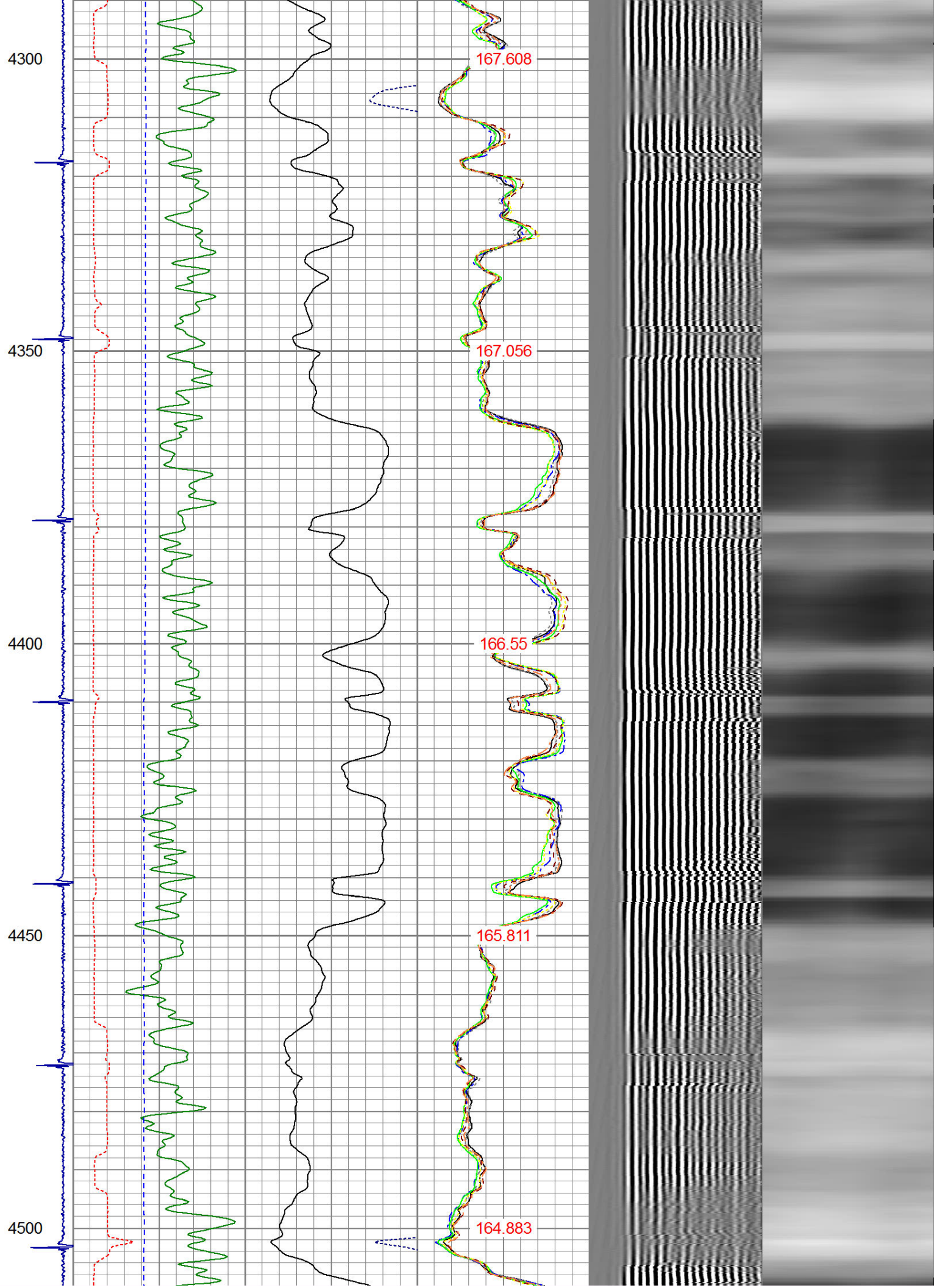
169.944

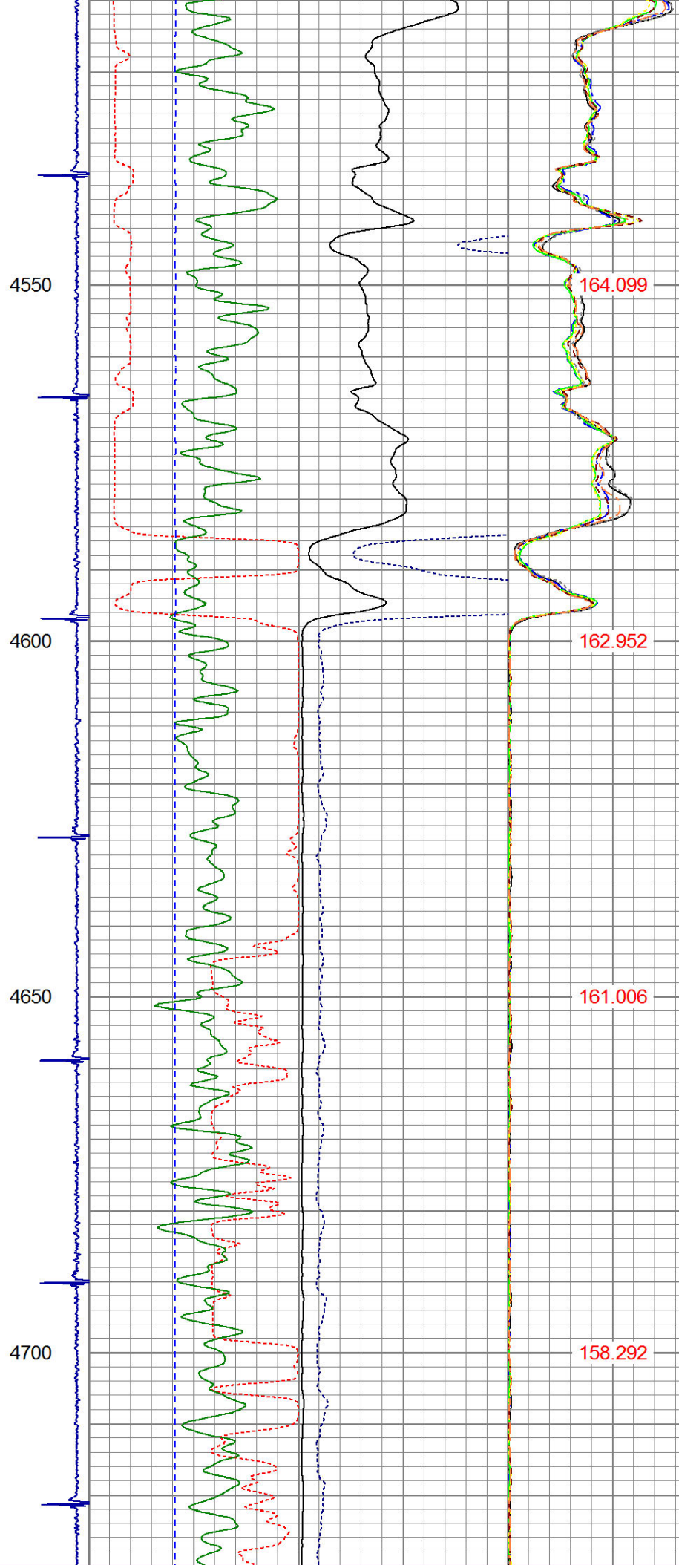
169.503

168.854

168.236







4750

4800

4850

4900

4950

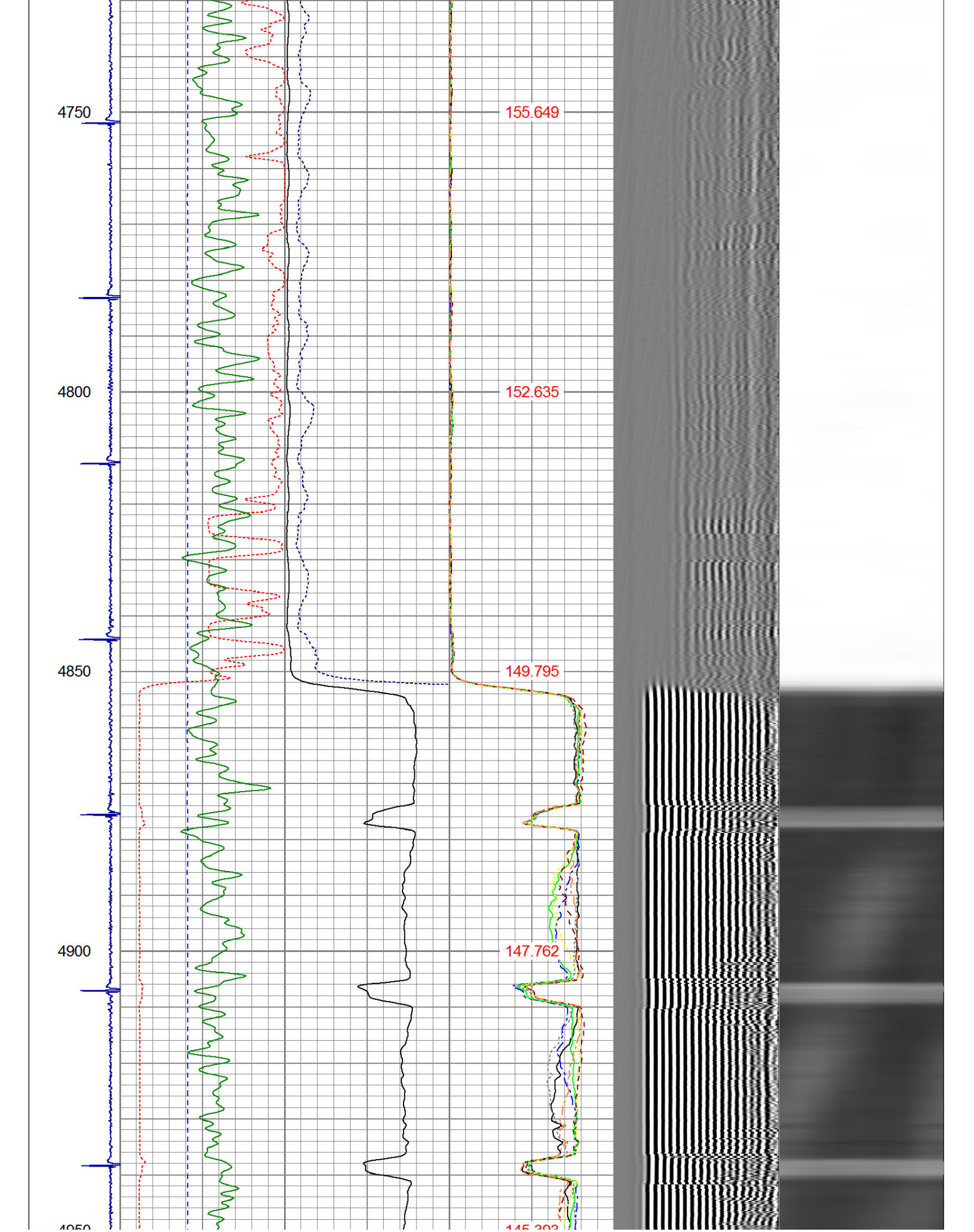
155.649

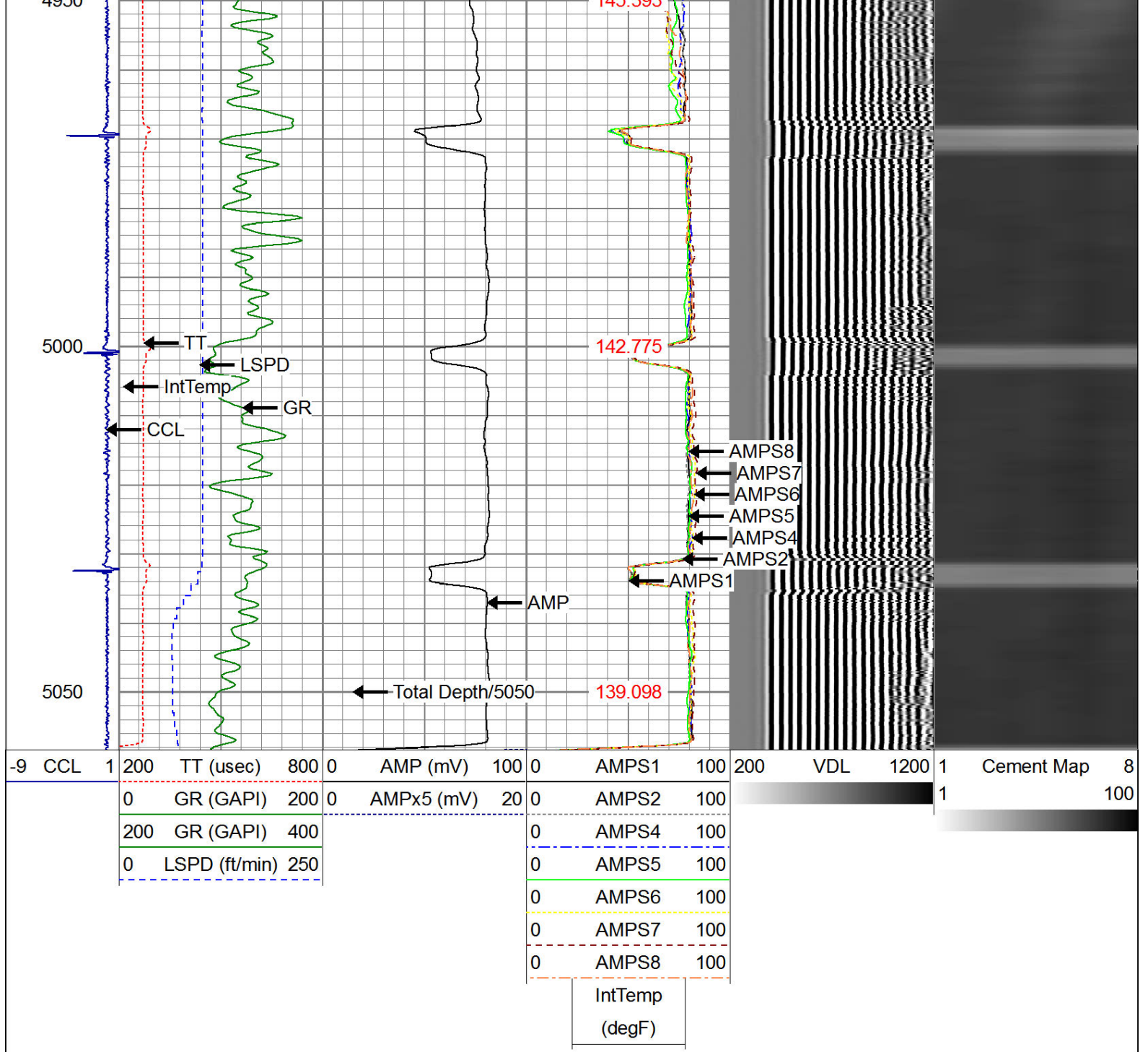
152.635

149.795

147.762

145.202





WARRIOR
ENERGY SERVICES

Company KERR MCGEE OIL & GAS
Well OSMUN EUNICE M GU #1
Field WATTENBERG
County WELD
State COLORADO