

Digital Cement Bond Log
Gamma Ray
CCL

Company		Kerr McGee Oil and Gas	
Well		HUNT 33-4	
Field		WATTENBERG	
County		WELD	
State		COLORADO	
Company		Kerr McGee Oil and Gas	
Well		HUNT 33-4	
Field		WATTENBERG	
County		WELD	
State		COLORADO	
Location:		API # : 05-123-30832 SW/SW	
Permanent Datum		GL	
Log Measured From		K.B. 15'	
Drilling Measured From		KB	
SEC 4		TWP 3N	
RGE 66W		Elevation 4802	
Other Services		K.B. 4817 D.F. 4816 G.L. 4802	
Date		10-25-2013	
Run Number		ONE	
Depth Driller		8015	
Depth Logger		1403	
Bottom Logged Interval		1400	
Top Log Interval		SURFACE	
Open Hole Size		4.5	
Type Fluid		WATER	
Density / Viscosity		1.0	
Max. Recorded Temp.		92	
Estimated Cement Top		350	
Time Well Ready		NA	
Time Logger on Bottom		NA	
Equipment Number		3812	
Location		GREELEY	
Recorded By		C.JONES	
Witnessed By		J.CHANDLER	
Borehole Record		Tubing Record	
Run Number		Bit	
From		To	
Size		Weight	
From		To	
ONE			
TWO			
Casing Record		Size	
Surface String		Wgt/Ft	
Prot. String		Top	
Production String		Bottom	
Liner			

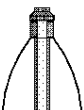
<<< Fold Here >>>

All interpretations are opinions based on inferences from electrical or other measurements and we cannot and do not guarantee the accuracy or correctness of any interpretation, and we shall not, except in the case of gross or willful negligence on our part, be liable or responsible for any loss, costs, damages, or expenses incurred or sustained by anyone resulting from any interpretation made by any of our officers, agents or employees. These interpretations are also subject to our general terms and conditions set out in our current Price Schedule.

Comments

RAN C.B.L. TO VERIFY CEMENT TOP.
NOT CORRELATED.

THANK YOU FOR USING WARRIOR ENERGY SERVICES!

Sensor	Offset (ft)	Schematic	Description	Len (ft)	OD (in)	Wt (lb)
						



Tool Joint	Tool Joint Length (ft)	Tool Joint Weight (lb)	Tool Joint O.D. (in)	Tool Joint Description	Tool Joint Weight (lb)	Tool Joint O.D. (in)	Tool Joint Length (ft)
PTS275	2.83	2.75					
HEADVOLT	14.75						
IntTemp	13.33						
WVFS3FT	10.08						
WVFCAL	10.08						
WVFS1	10.08						
WVFS2	10.08						
WVFS3	10.08						
WVFS4	10.08						
WVFS5	10.08						
WVFS6	10.08						
WVFS7	10.08						
WVFS8	10.08						
WVF5FT	9.08						
CNLSC	6.00						
CNSSC	5.17						
CCL	3.64						
GR	0.90						
GR-Probe (275)	4.33	2.75	30.00	Probe 2.75"			
CNT-Probe_B (275)	1.50	2.75	40.00	6 bow centralizer			
RBT-Probe (Base)	8.92	2.75	90.00	Probe Radii Bond Tool with Digital Telemetry			

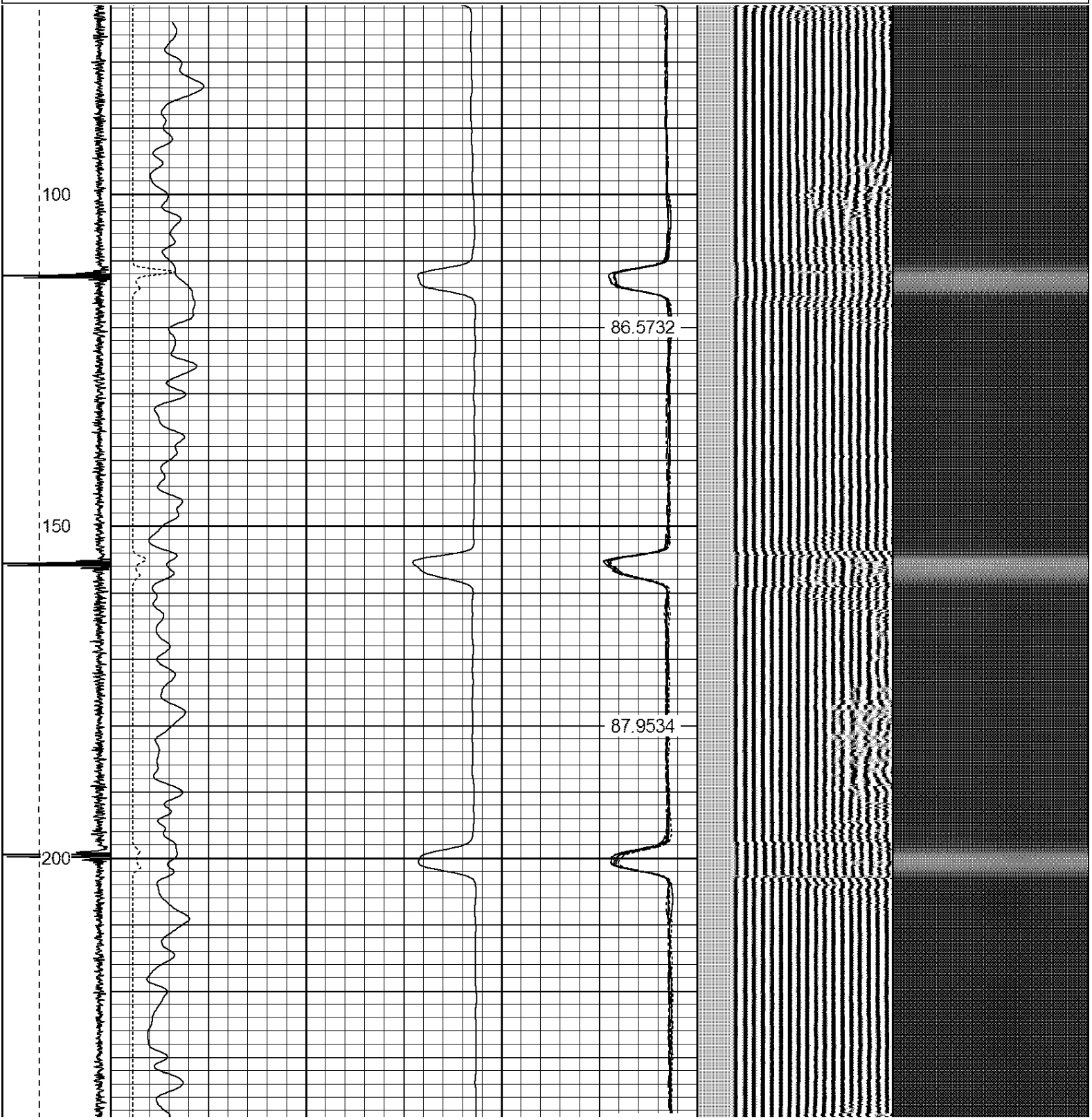
Dataset: hunt 33 4.db: field/well/run1/pass5

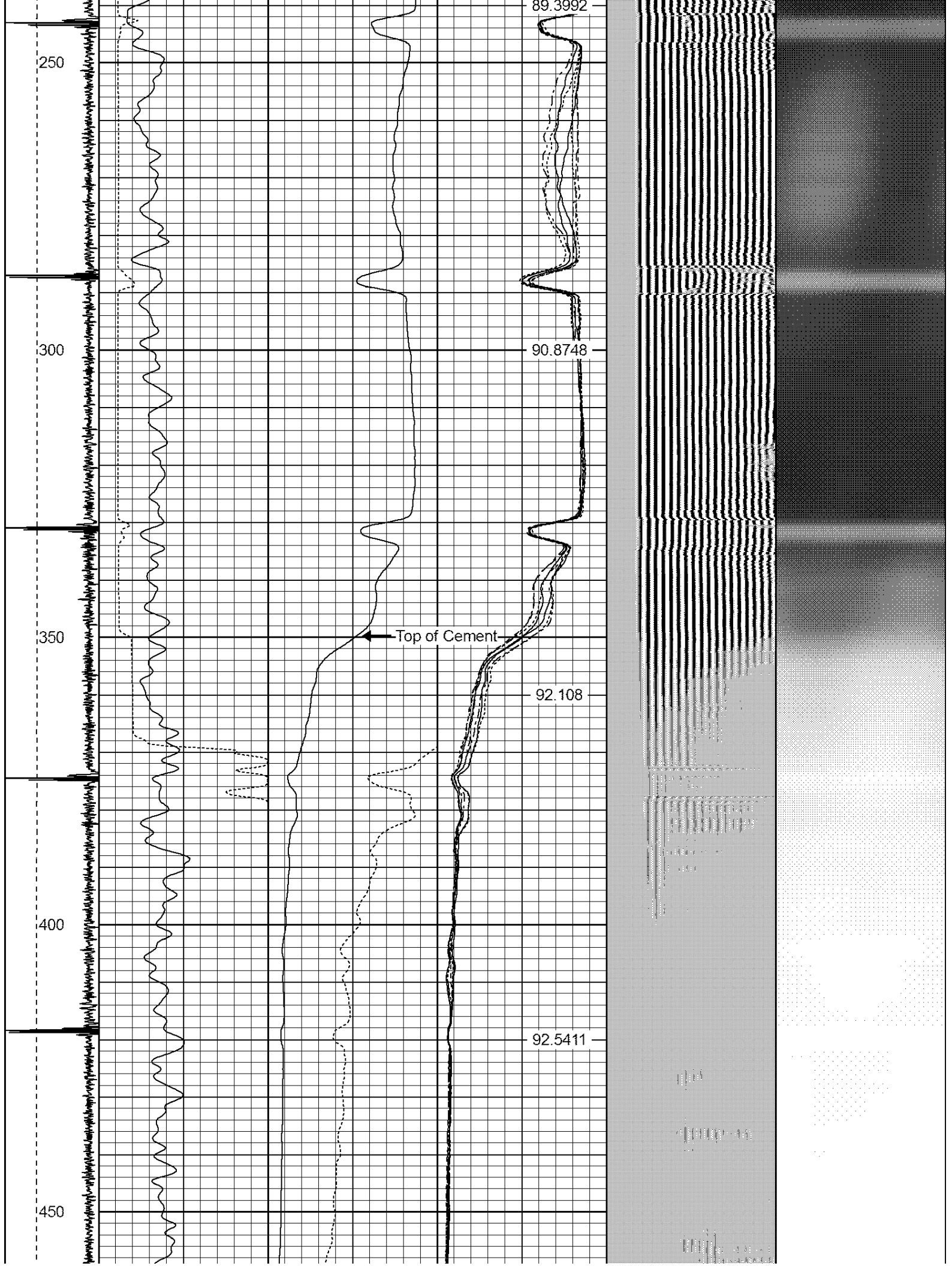
Total Length: 17.58 ft

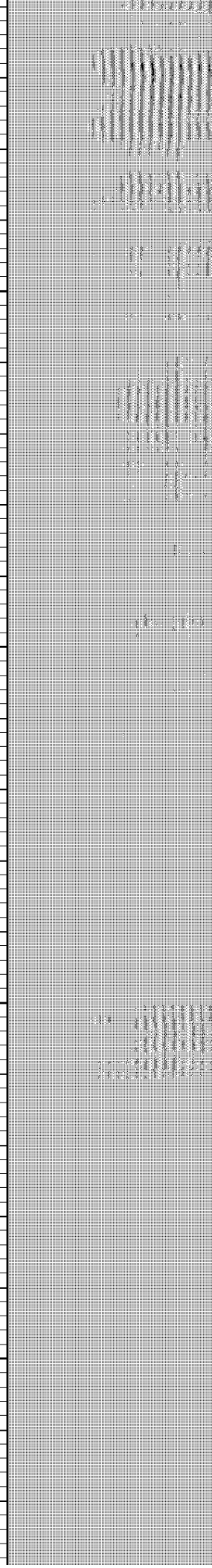
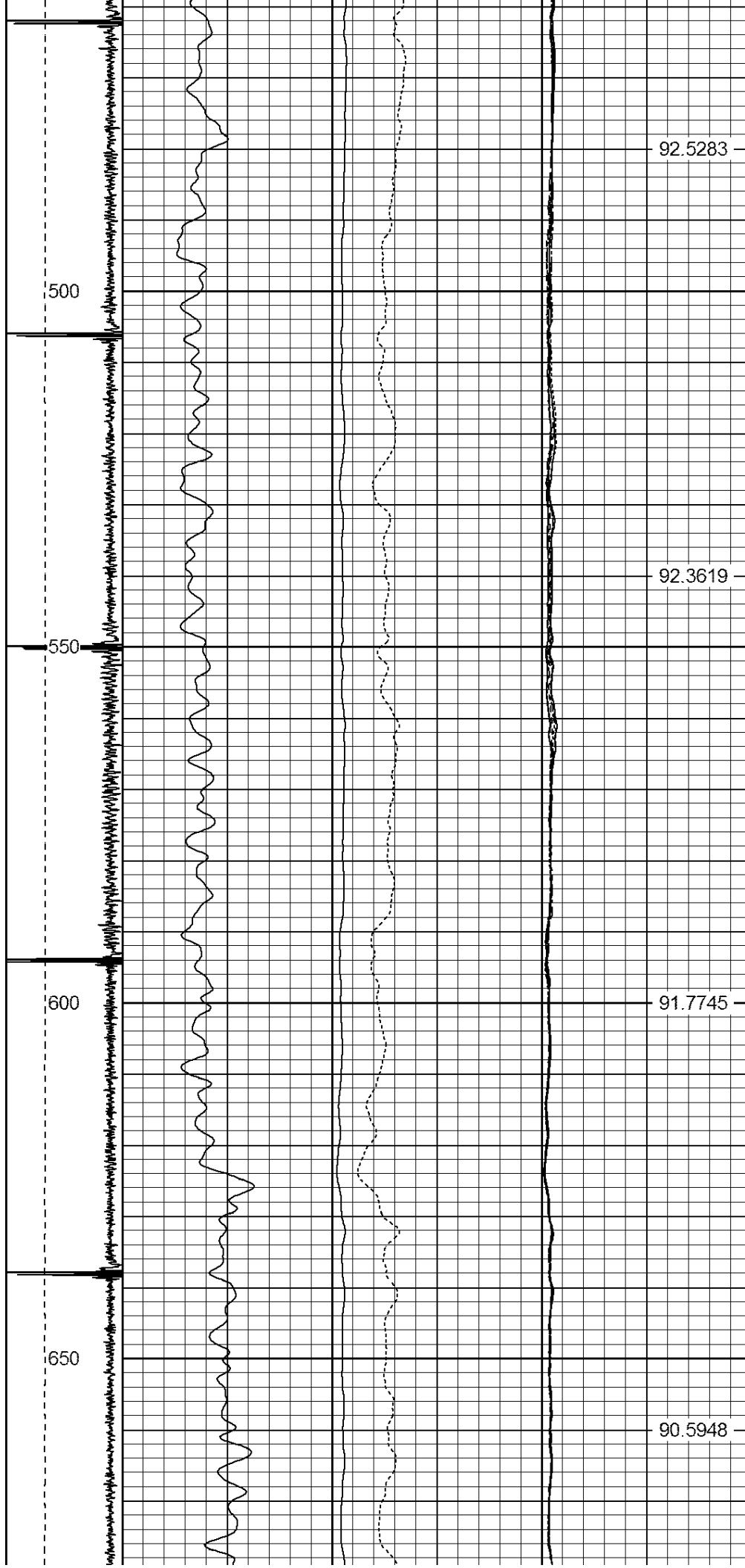
Total Weight: 160.00 lb

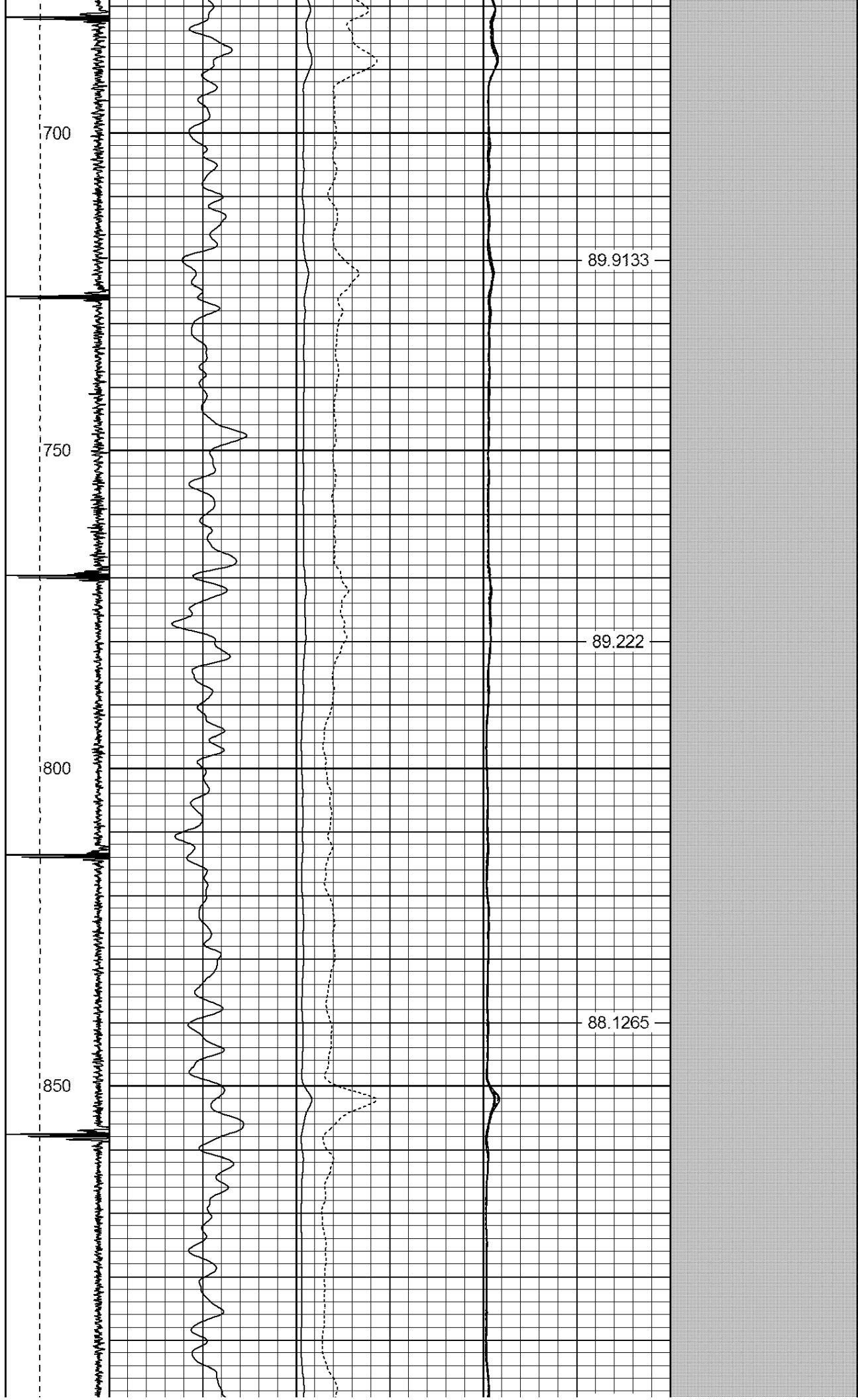
O.D.: 2.75 in

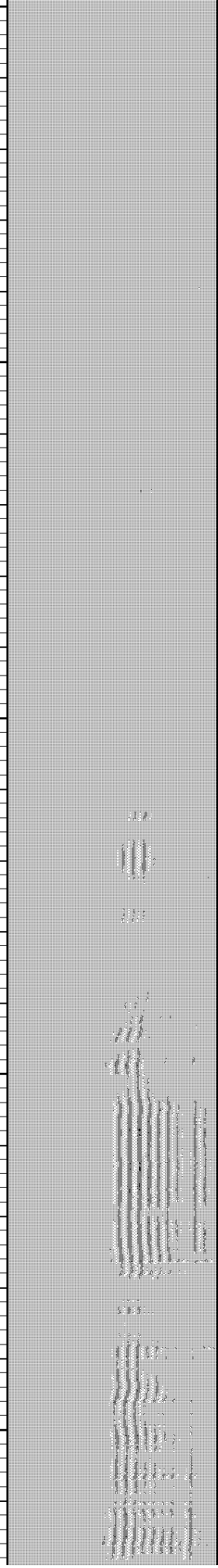
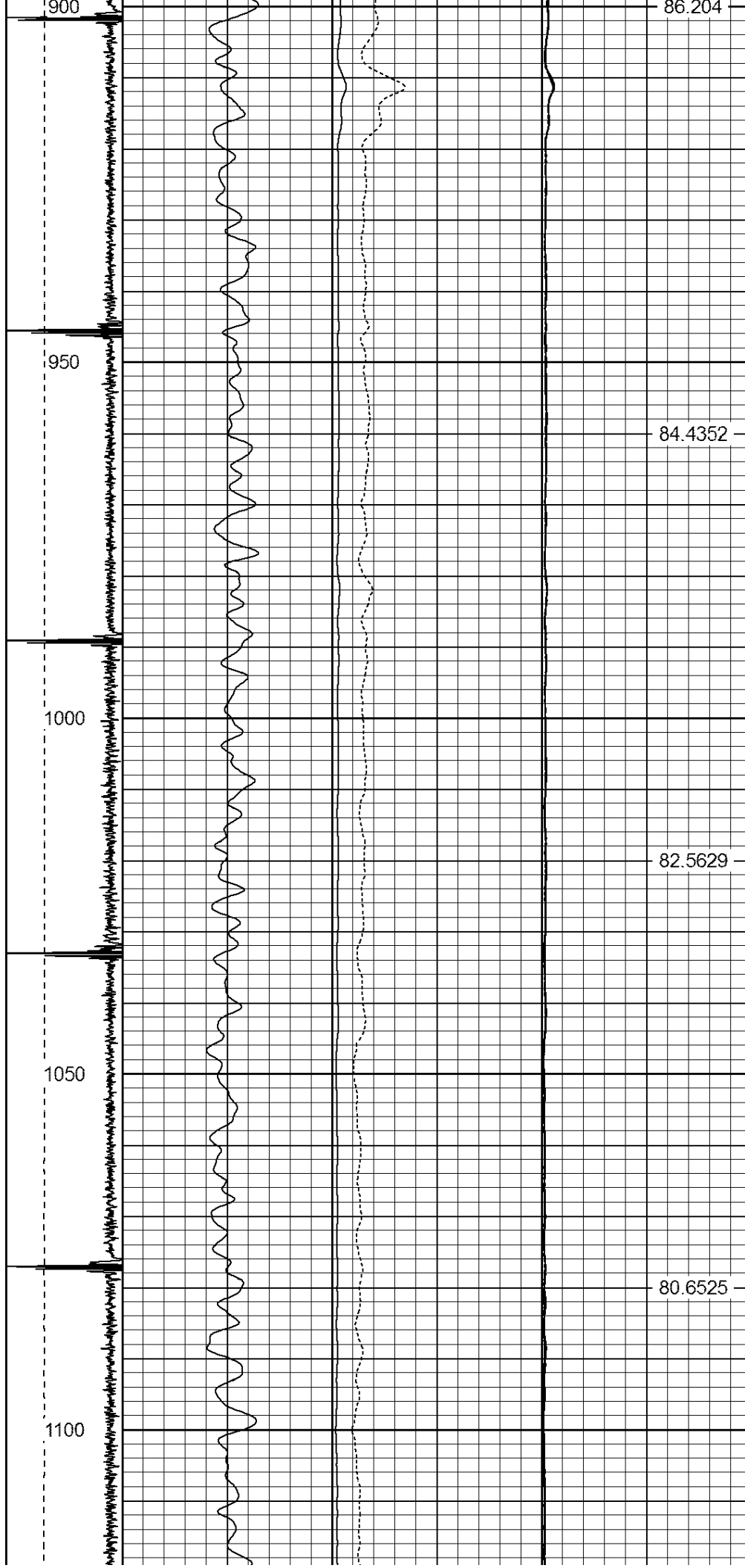
Dataset Creation: Fri Oct 25 07:23:46 2013 by Log 7.0 B1																		
Charted by: Depth in Feet scaled 1:240																		
-9	CCL	1	200	TT (usec)	800	0	AMP (mV)	100	0	AMPS1	100	200	VDL	1200	1	Cement Map	8	
LSPD (ft/min)	0		0	GR (GAPI)	200	0	AMPx5 (mV)	20	0	AMPS2	100			1				
	200		200	GR (GAPI)	400				0	AMPS4	100							
0	250								0	AMPS5	100							
										0	AMPS6	100						
										0	AMPS7	100						
										0	AMPS8	100						
											IntTemp (degF)							

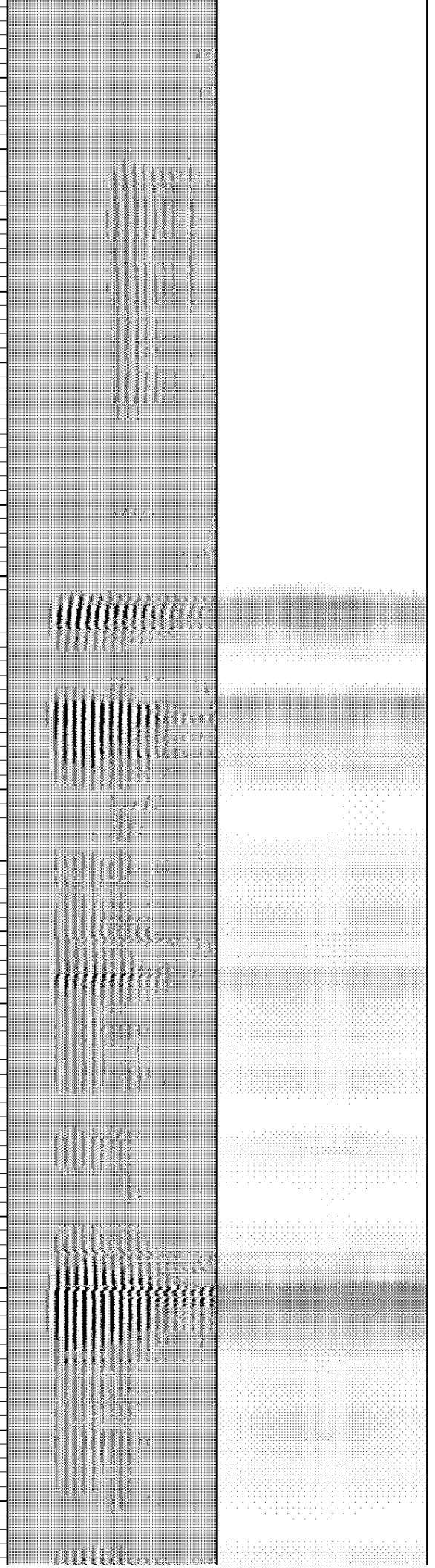
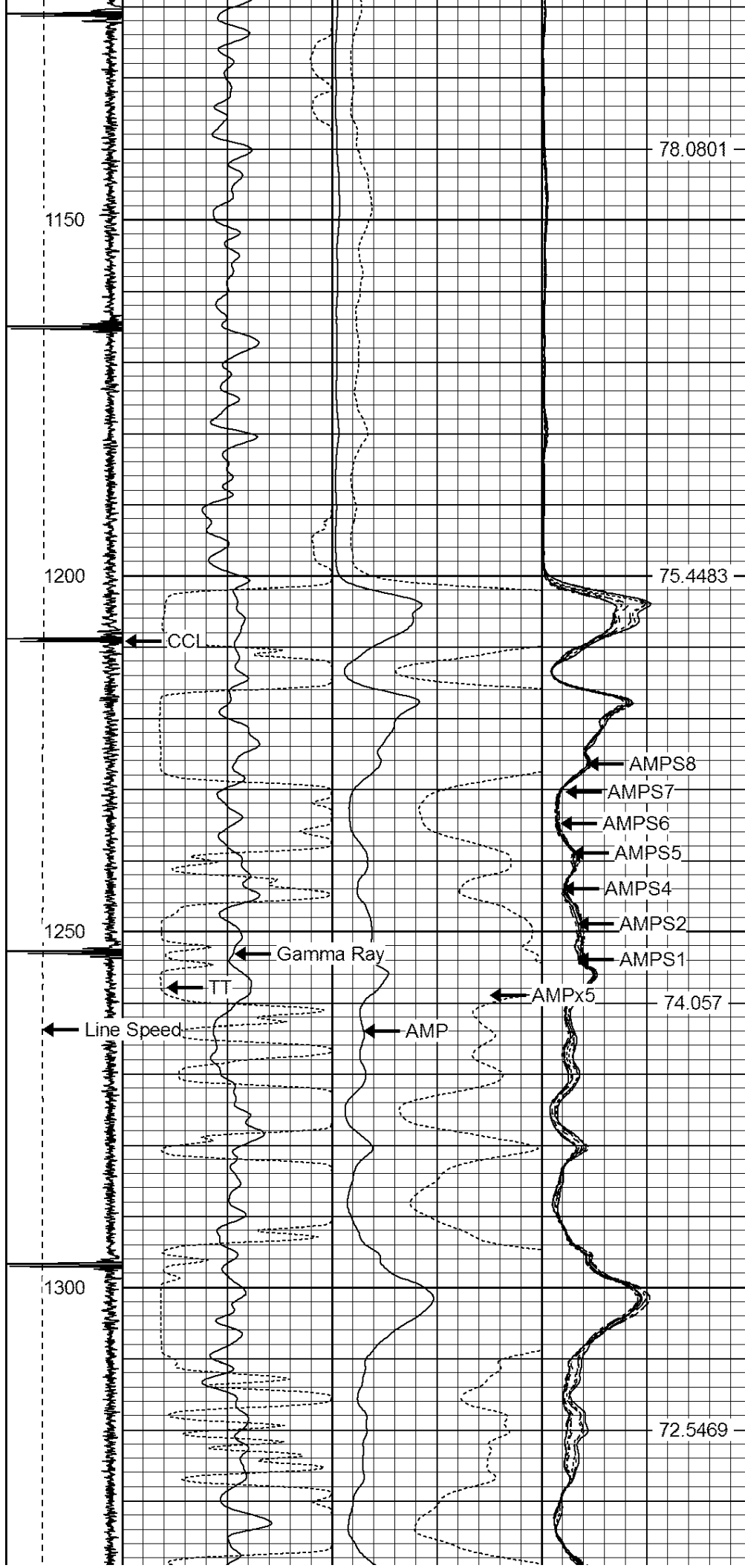


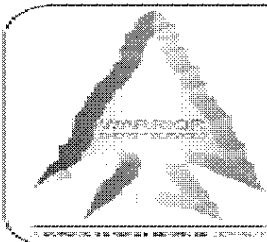
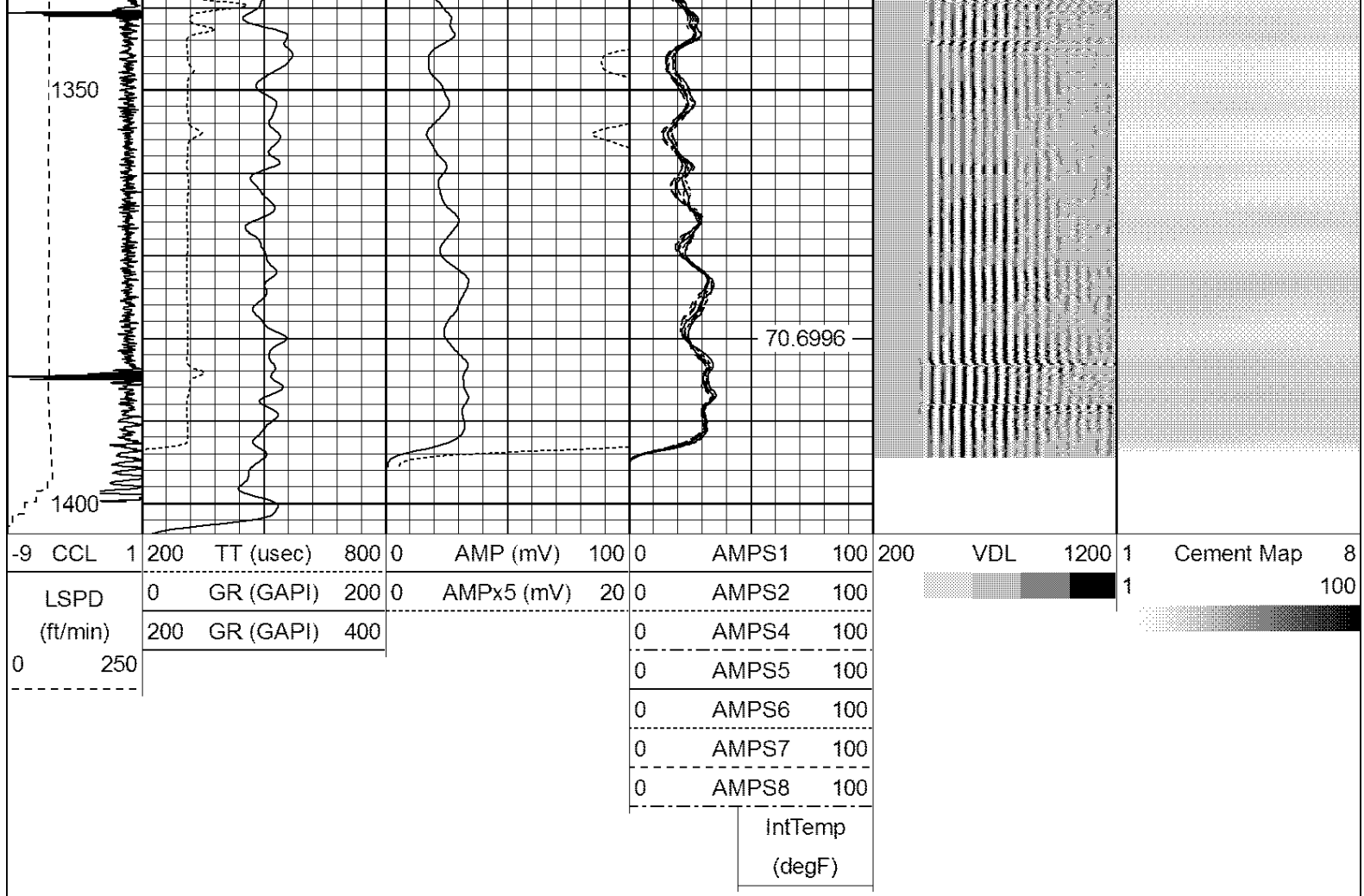












WARRIOR
ENERGY SERVICES

Company Kerr McGee Oil and Gas

Well HUNT 33-4

Field WATTENBERG

County WELD

State COLORADO