

Project: Wattenberg Field
Site: E (Sec.23-T06N-R65W) Weld County, CO
Well: Reliance E23-63HC
Wellbore: Original Drilling
Design: APD - Rev 1

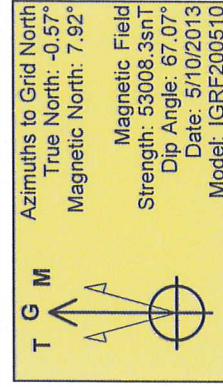
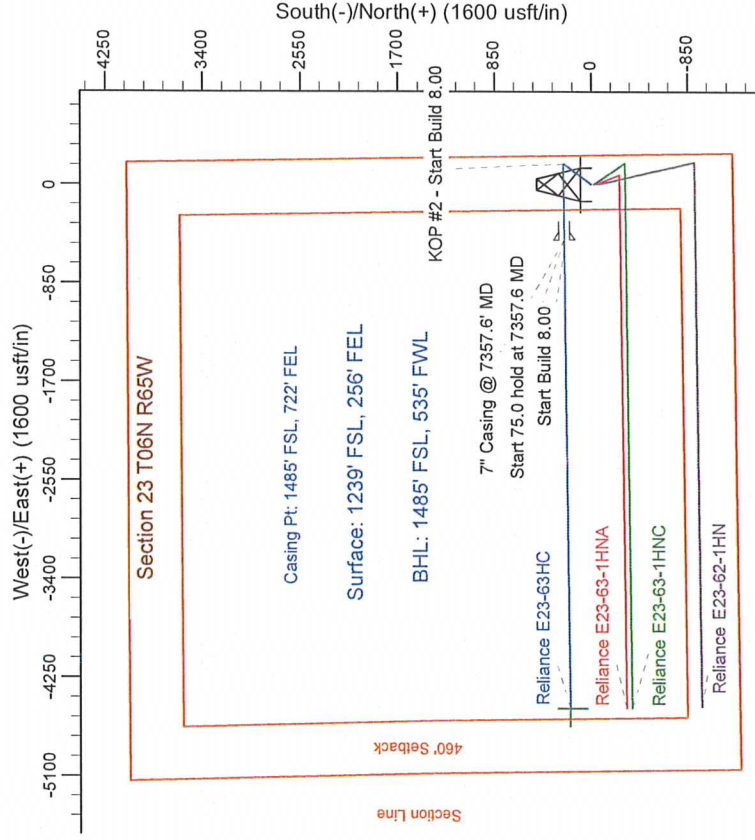
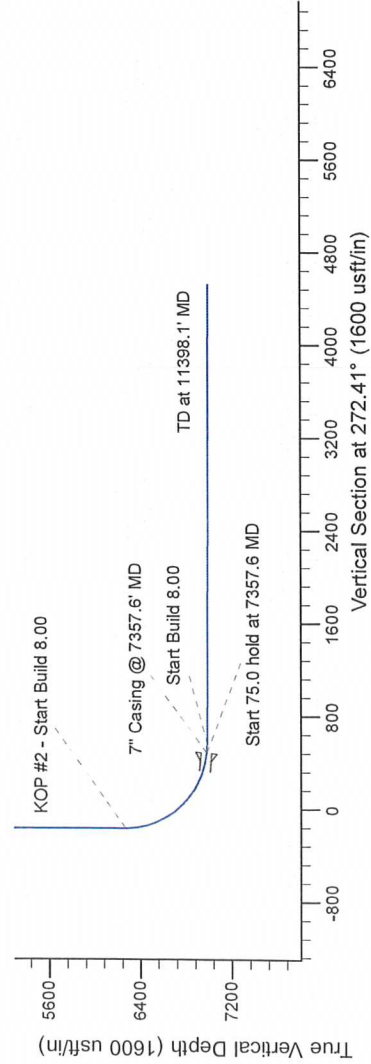
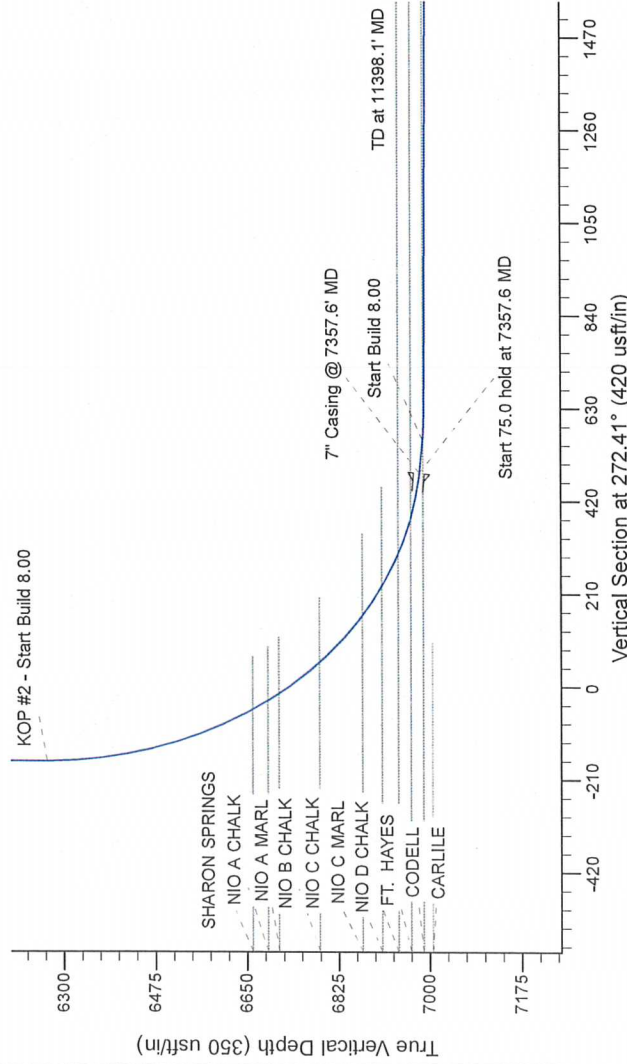
Northern Region Drilling - Working

Geodetic System: US State Plane 1983
Datum: North American Datum 1983
Ellipsoid: GRS 1980
Zone: Colorado Northern Zone
System Datum: Mean Sea Level

SECTION DETAILS

Sec	MD	Inc	Azi	TVD	+N/S	+E/W	Dleg	TFace	VSect	Target
1	0	0.00	0.00	0.00	0.0	0.0	0.00	0.00	0.0	
2	1500.0	0.00	0.00	1500.0	0.0	0.0	0.00	0.00	0.0	
3	2100.9	12.02	36.19	2098.5	50.7	37.1	2.00	38.19	-34.9	
4	2661.8	12.02	36.19	2638.5	195.3	142.9	2.00	180.00	-134.6	
5	3562.7	0.00	0.00	3535.0	246.0	180.0	2.00	180.00	-169.5	
6	6295.1	0.00	0.00	6267.4	246.0	180.0	2.00	269.32	483.3	
7	7357.6	85.00	269.32	6980.9	238.2	-473.7	8.00	0.00	557.9	
8	7432.6	85.00	269.32	6987.4	237.3	-548.4	8.00	0.00	617.8	
9	7492.6	89.80	269.32	6990.2	236.6	-608.4	8.00	0.00	4517.5	
10	11398.1	89.80	269.32	7003.8	189.9	-4513.6	0.00	0.00		

Reliance E23-63HC BHL 1485'FSL, 535'FWL



WELL DETAILS: Reliance E23-63HC

	Northing	Easting	Ground Level	Latitude	Longitude
0.0	0.0	1414400.76	3244353.78	40.467610	-104.621750

Plan: APD - Rev 1 (Reliance E23-63HC/Original Drilling)

Created By: Shalley Jewell	Date: 15:05, October 10 2013
Checked:	Date:
Reviewed:	Date:
Approved:	Date: