

# WPX Energy Rocky Mountain, LLC

PLAT #2\_LOCATION LAYOUT FOR AP 21-20-695  
SECTION 20, T6S, R95W, 6th P.M.

SCALE: 1" = 50'

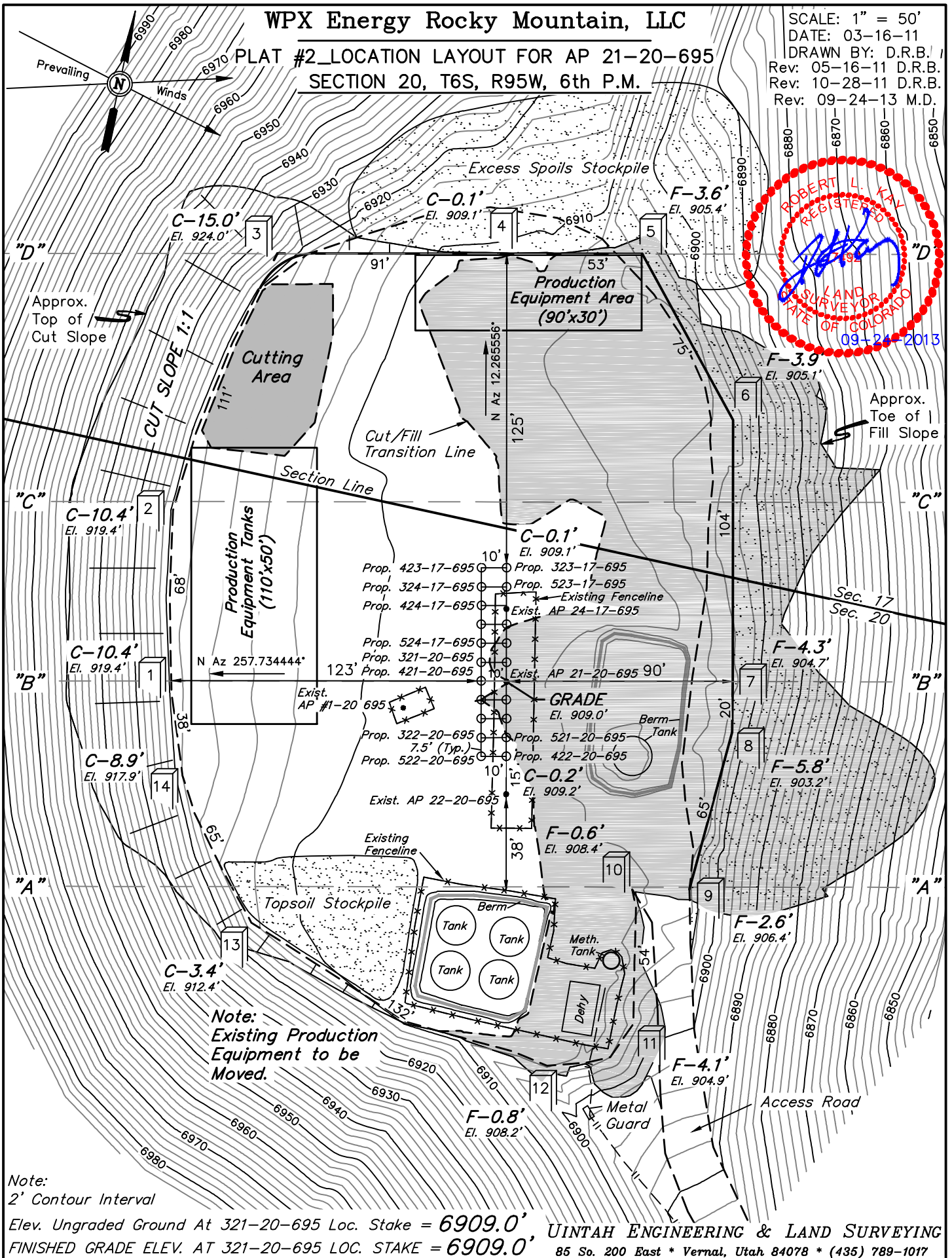
DATE: 03-16-11

DRAWN BY: D.R.B.

Rev: 05-16-11 D.R.B.

Rev: 10-28-11 D.R.B.

Rev: 09-24-13 M.D.



Note:  
2' Contour Interval

Elev. Ungraded Ground At 321-20-695 Loc. Stake = 6909.0' UTAH ENGINEERING & LAND SURVEYING  
FINISHED GRADE ELEV. AT 321-20-695 LOC. STAKE = 6909.0' 85 So. 200 East \* Vernal, Utah 84078 \* (435) 789-1017

# WPX Energy Rocky Mountain, LLC

PLAT #3\_TYPICAL CROSS SECTION FOR AP 21-20-695  
SECTION 20, T6S, R95W, 6th P.M.

1" = 20'  
X-Section  
Scale  
1" = 50'

DATE: 03-16-11  
DRAWN BY: D.R.B.  
Rev: 03-16-11 D.R.B.  
Rev: 09-24-13 M.D.

Cut Slope = 1 : 1  
(Typ.)

Preconstruction  
Grade

80'

44'

CUT

Fill Slope = 1 1/2:1  
(Typ.)

FILL

"D" - "D"

131'

90'

CUT

Finished Grade

FILL

"C" - "C"

133'

90'

LOCATION STAKE 421-20-695

LOCATION STAKE 21-20-695

CUT

FILL

"B" - "B"

109'

73'

CUT

FILL

"A" - "A"

## APPROXIMATE YARDAGES

(6") Topsoil Stripping = 480 Cu. Yds.

(New Construction Only)

Remaining Location = 5,130 Cu. Yds.

**TOTAL CUT = 5,610 CU.YDS.**

**FILL = 2,370 CU.YDS.**

EXCESS MATERIAL = 3,240 Cu. Yds.

Topsoil = 480 Cu. Yds.

EXCESS UNBALANCE = 2,760 Cu. Yds.

(After Interim Rehabilitation)

\* NOTE:  
FILL QUANTITY INCLUDES  
5% FOR COMPACTION

UINTAH ENGINEERING & LAND SURVEYING  
85 So. 200 East \* Vernal, Utah 84078 \* (435) 789-1017

