

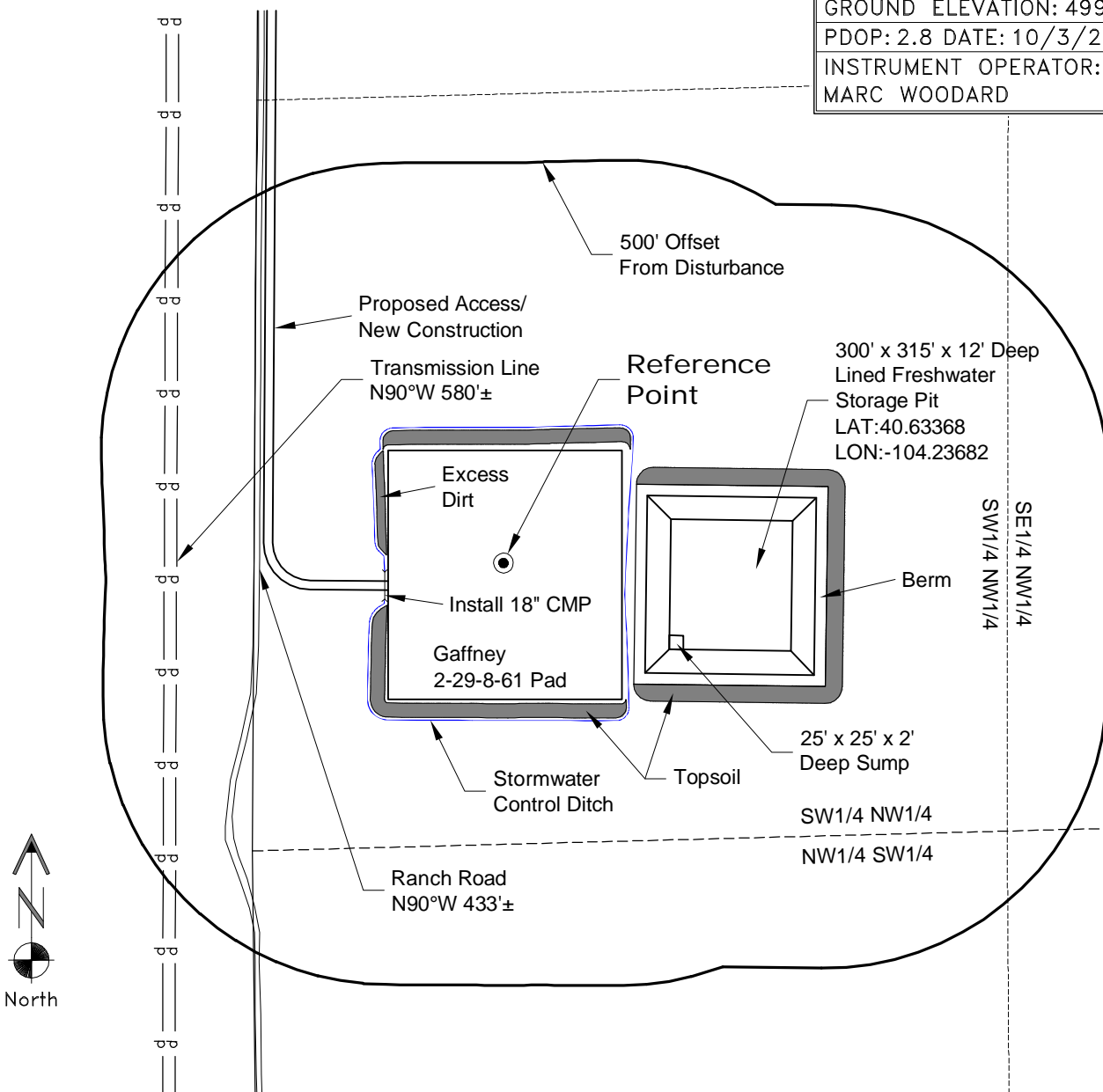
# LOCATION DRAWING

PLANT COMMUNITY:  
DISTURBED GRASSLAND

SURFACE USE:  
CRP

## REFERENCE POINT

LATITUDE: 40.63380
LONGITUDE: -104.23827
FOOTAGE: 2164 FNL 443 FWL
GROUND ELEVATION: 4991.4
PDOP: 2.8 DATE: 10/3/2013
INSTRUMENT OPERATOR: MARC WOODARD

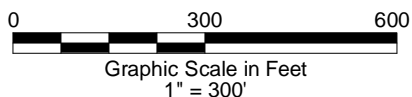


NOTE-DISTANCE TO NEAREST:  
Property Line - W 443'  
Public Road - HWY 14 - N 2146'±  
Building - House N71°E 7870'±  
Railroad - S46°W 22 Miles  
Powerline - W 580'±

DISTURBANCE ACREAGE:  
6.3± DRILLING OPERATIONS

NOTE:  
ALL PRODUCTION FACILITIES WILL BE ON PAD.

10/7/13



LAND SURVEYING AND MAPPING  
LAFAYETTE - WINTER PARK  
Ph 303 666 0379 Fx 303 665 6320

**CARRIZO NIOBRARA LLC**  
**GAFFNEY 2-29-8-61 PAD**

**SW 1/4 NW 1/4 SECTION 29 T8N R61W**  
**6th PM WELD COUNTY COLORADO**