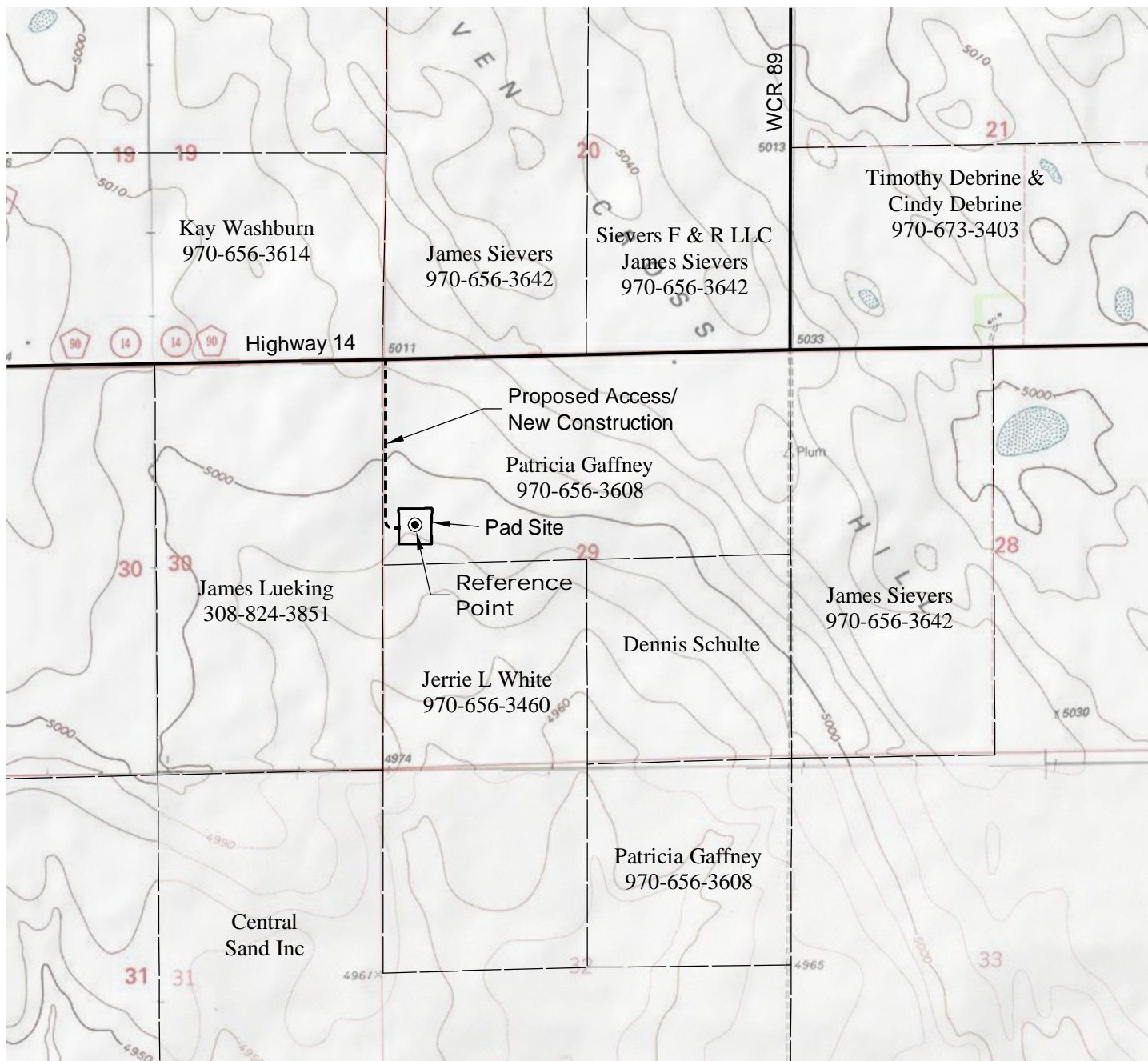


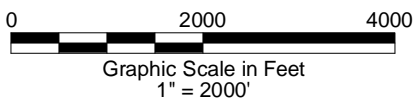
ACCESS ROAD MAP



DRIVING DIRECTIONS:

MP 0.0 - Intersection of Highway 14 a.k.a. WCR 90 & Highway 392
a.k.a. WCR 77 in Briggsdale; East on Highway 14
MP 4.9 - Right on access to Gaffney 2-29-8-61 Pad
MP 5.3 - Gaffney 2-29-8-61 Pad

10/7/13



LAND SURVEYING AND MAPPING
LAFAYETTE - WINTER PARK
Ph 303 666 0379 Fx 303 665 6320

CARRIZO NIOBRARA LLC
GAFFNEY 2-29-8-61 PAD

SW1/4 NW1/4 SECTION 29 T8N R61W
6th PM WELD COUNTY COLORADO