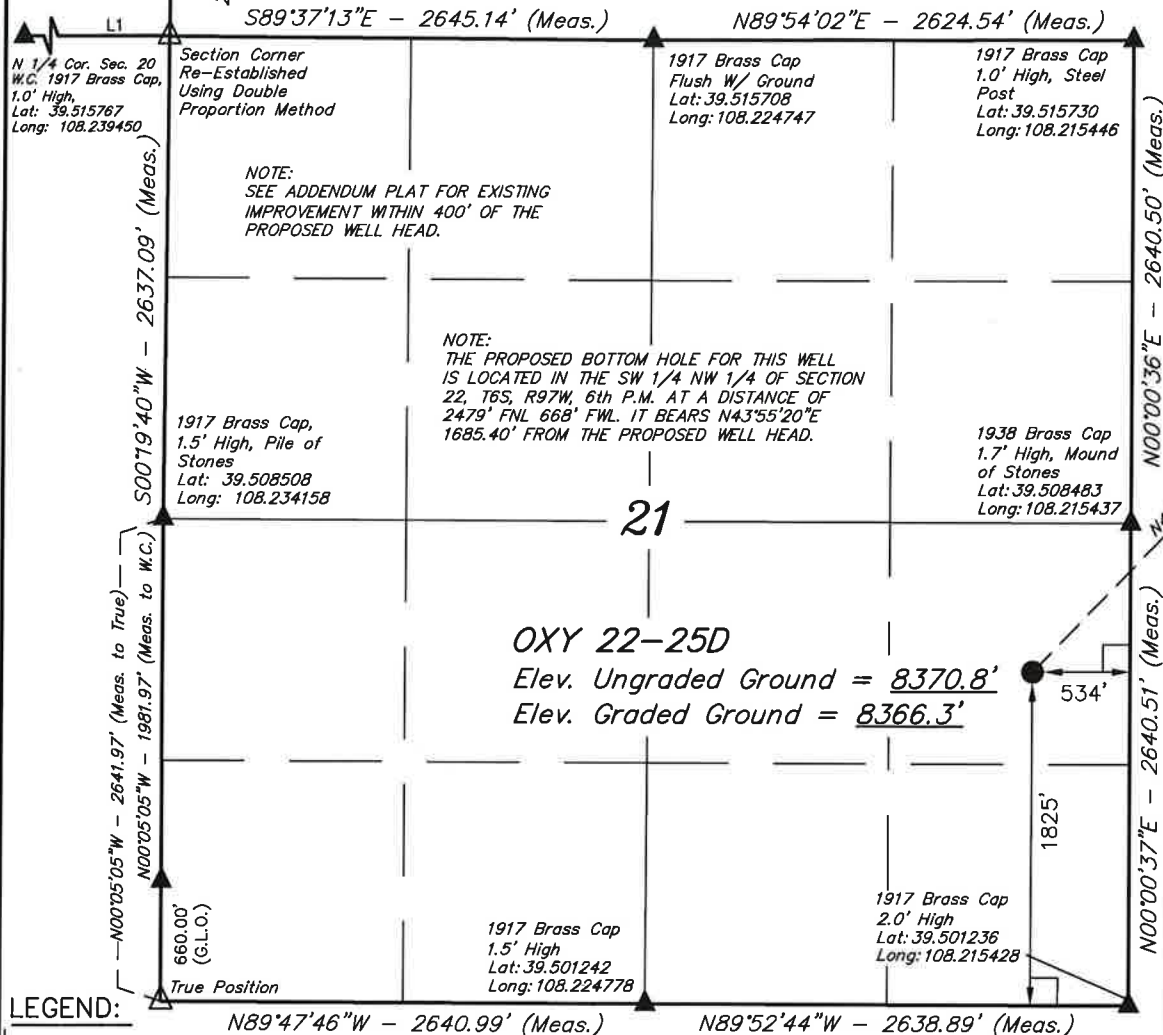


W 1/4 Cor. Sec. 16
1917 Brass Cap
1.3' High, Steel
Post
Lat: 39.522985
Long: 108.234115

T6S, R97W, 6th P.M.

LINE TABLE		
LINE	BEARING	LENGTH
L1	N89°59'36"W	2634.86'



BERRY PETROLEUM COMPANY

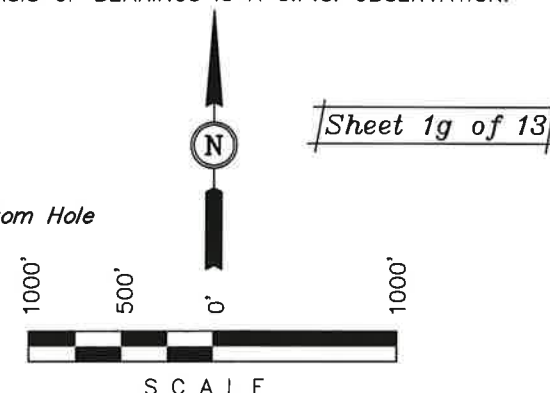
Well location, OXY 22-25D (SURFACE LOCATION),
located as shown in the NE 1/4 SE 1/4 of
Section 21, T6S, R97W, 6th P.M., Garfield
County, Colorado.

BASIS OF ELEVATION

SPOT ELEVATION AT THE NORTHWEST CORNER OF
SECTION 30, T5S, R95W, 6th P.M. TAKEN FROM THE
FORKED GULCH QUADRANGLE, COLORADO, GARFIELD
COUNTY, 7.5 MINUTE SERIES (TOPOGRAPHICAL MAP)
PUBLISHED BY THE UNITED STATES DEPARTMENT OF
THE INTERIOR, GEOLOGICAL SURVEY. SAID ELEVATION IS
MARKED AS BEING 5966 FEET.

BASIS OF BEARINGS

BASIS OF BEARINGS IS A G.P.S. OBSERVATION.



CERTIFICATE.

THIS IS TO CERTIFY THAT THE ABOVE PLAT WAS PREPARED AND
LOCATION AS SHOWN WAS STAKED ON THE GROUND FROM FIELD
NOTES OF ACTUAL SURVEYS MADE BY ME OR UNDER MY
SUPERVISION AND THAT THE SAME ARE TRUE AND CORRECT TO
THE BEST OF MY KNOWLEDGE AND BELIEF.

REVISED: 06-03-10 D.R.B.
REVISED: 10-23-09 C.H.
REVISED: 09-14-09 C.H.
REVISED: 08-18-09 C.H.

REGISTERED LAND SURVEYOR
REGISTRATION NO. 17492
STATE OF COLORADO

UINTAH ENGINEERING & LAND SURVEYING
85 SOUTH 200 EAST - VERNAL, UTAH 84078
(435) 789-1017

SCALE 1" = 1000'	DATE SURVEYED: 01-29-07	DATE DRAWN: 03-07-08
PARTY B.J. B.H. D.R.B.	REFERENCES G.L.O. PLAT	
WEATHER COLD	FILE BERRY PETROLEUM COMPANY	

NAD 83 (SURFACE LOCATION)	
LATITUDE =	39°30'22.49" (39.506247)
LONGITUDE =	108°13'02.38" (108.217328)
NAD 27 (SURFACE LOCATION)	
LATITUDE =	39°30'22.57" (39.506269)
LONGITUDE =	108°13'00.08" (108.216689)

PDOP = 3.7

T6S, R97W, 6th P.M.

BERRY PETROLEUM COMPANY

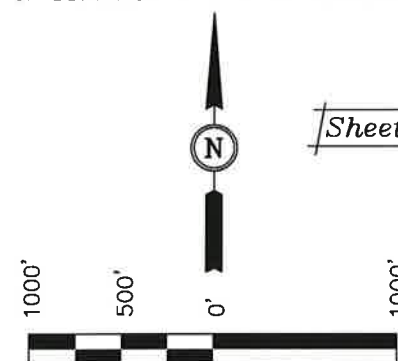
Well location, OXY 22-25D (TARGET BOTTOM HOLE), located as shown in the SW 1/4 NW 1/4 of Section 22, T6S, R97W, 6th P.M., Garfield County, Colorado.

BASIS OF ELEVATION

SPOT ELEVATION AT THE NORTHWEST CORNER OF SECTION 30, T5S, R95W, 6th P.M. TAKEN FROM THE FORKED GULCH QUADRANGLE, COLORADO, GARFIELD COUNTY, 7.5 MINUTE SERIES (TOPOGRAPHICAL MAP) PUBLISHED BY THE UNITED STATES DEPARTMENT OF THE INTERIOR, GEOLOGICAL SURVEY. SAID ELEVATION IS MARKED AS BEING 5966 FEET.

BASIS OF BEARINGS

BASIS OF BEARINGS IS A G.P.S. OBSERVATION.



SCALE

CERTIFICATE

THIS IS TO CERTIFY THAT THE ABOVE PLAT WAS PREPARED AND LOCATION AS SHOWN WAS STAKED ON THE GROUND FROM FIELD NOTES OF ACTUAL SURVEYS MADE BY ME OR UNDER MY SUPERVISION AND THAT THE SAME ARE TRUE AND CORRECT TO THE BEST OF MY KNOWLEDGE AND BELIEF.

REGISTERED LAND SURVEYOR
REGISTRATION NO. 12492
STATE OF COLORADO

UINTAH ENGINEERING & LAND SURVEYING
85 SOUTH 200 EAST - VERNAL, UTAH 84078
(435) 789-1017

1917 Brass Cap
1.0' High, Steel
Post
Lat: 39.515730
Long: 108.215446

N89°58'38"W - 2641.00' (Meas.)

N89°54'47"W - 2637.43' (Meas.)

1917 Brass Cap
0.8' High, Steel
Post
Lat: 39.515735
Long: 108.206088

1917 Brass Cap
1.6' High, Steel
Post
Lat: 39.515732
Long: 108.196743

N00°00'36"E - 2640.50' (Meas.)

2479'

668' Bottom Hole

NOTE:
THE PROPOSED BOTTOM HOLE FOR THIS
WELL BEARS N43°55'20"E 1685.40' FROM
THE PROPOSED WELL HEAD.

22

1938 Brass Cap
1.7' High, Mound
of Stones
Lat: 39.508483
Long: 108.215437

N00°00'37"E - 2640.51' (Meas.)

1917 Brass Cap
2.0' High
Lat: 39.501236
Long: 108.215428

1917 Brass Cap
1.0' High
Lat: 39.501244
Long: 108.206063

1917 Brass Cap
1.0' High
Lat: 39.501243
Long: 108.196735

S89°59'59"W - 2643.24' (Meas.)

N89°55'41"W - 2633.11' (Meas.)

LEGEND:

└─┘ = 90° SYMBOL

● = PROPOSED WELL HEAD.

▲ = SECTION CORNERS LOCATED.

NAD 83 (TARGET BOTTOM HOLE)

LATITUDE = 39°30'34.50" (39.509583)
LONGITUDE = 108°12'47.48" (108.213190)

NAD 27 (TARGET BOTTOM HOLE)

LATITUDE = 39°30'34.58" (39.509606)
LONGITUDE = 108°12'45.19" (108.212553)

SCALE 1" = 1000'	DATE SURVEYED: 08-06-09	DATE DRAWN: 06-03-10
PARTY B.J. B.H. D.R.B.	REFERENCES G.L.O. PLAT	
WEATHER COLD	FILE BERRY PETROLEUM COMPANY	