

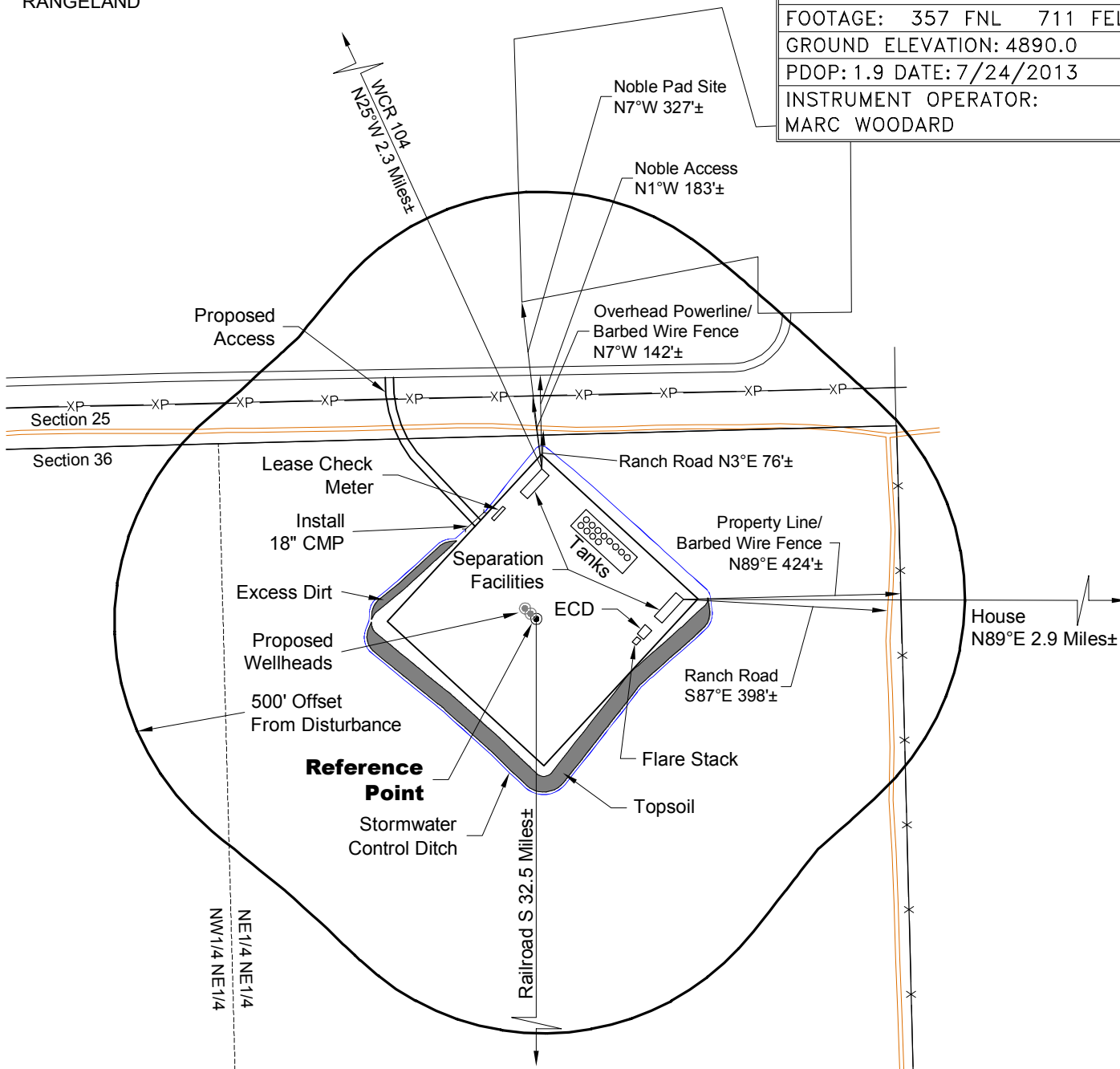
# LOCATION DRAWING

PLANT COMMUNITY:  
DISTURBED GRASSLAND

SURFACE USE:  
RANGELAND

## REFERENCE POINT

LATITUDE: 40.71351
LONGITUDE: -103.91896
FOOTAGE: 357 FNL 711 FEL
GROUND ELEVATION: 4890.0
PDOP: 1.9 DATE: 7/24/2013
INSTRUMENT OPERATOR: MARC WOODARD

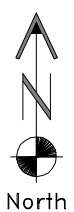


DWG: G:\GEO SURV\WellzNorth\Carrizo 110004\Wellplans\Caster 36-11-9-59\F2A multi-well R3.dwg USER: MTC DATE: Oct 30, 2013 2:48pm

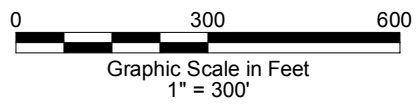
DISTURBANCE ACREAGE:  
6.7± DRILLING OPERATIONS

NOTE:  
ALL PRODUCTION FACILITIES WILL BE ON PAD.

10/30/13



North



**LAND SURVEYING AND MAPPING**  
LAFAYETTE - WINTER PARK  
Ph 303 666 0379 Fx 303 665 6320

**CARRIZO NIOBRARA LLC**  
CASTOR 4-36-9-59 PAD

---

**NE1/4 NE1/4 SEC. 36 T9N R59W**  
**6th PM WELD COUNTY COLORADO**