

T7S, R96W, 6th. P.M.

WPX Energy Rocky Mountain, LLC

1982 Brass Cap  
0.3' High  
Lat: 39.430269°  
Long: 108.086911°

Well location, SG 522-22, located as shown in LOT 8 of Section 22, T7S, R96W, 6th P.M., Garfield County, Colorado.

BASIS OF ELEVATION

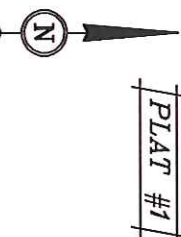
SPOT ELEVATION AT THE NORTHWEST CORNER OF SECTION 30, T5S, R95W, 6th P.M. TAKEN FROM THE FORKED GULCH QUADRANGLE, COLORADO, GARFIELD COUNTY, 7.5 MINUTE SERIES (TOPOGRAPHICAL MAP) PUBLISHED BY THE UNITED STATES DEPARTMENT OF THE INTERIOR, GEOLOGICAL SURVEY. SAID ELEVATION IS MARKED AS BEING 5966 FEET.

BASIS OF BEARINGS

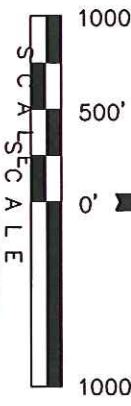
BASIS OF BEARINGS IS A G.P.S. OBSERVATION.

LEGEND:

- └ = 90° SYMBOL
- = PROPOSED WELL HEAD.
- ▲ = SECTION CORNERS LOCATED.
- △ = SECTION CORNERS RE-ESTABLISHED. (Not Set on Ground.)



PLAT #1



CERTIFICATE

THIS IS TO CERTIFY THAT THE ABOVE PLAT WAS PREPARED AND LOCATION AS SHOWN WAS STAKED ON THE GROUND FROM FIELD NOTES OF ACTUAL SURVEYS MADE BY ME OR UNDER MY SUPERVISION AND THAT THE SAME ARE TRUE AND CORRECT TO THE BEST OF MY KNOWLEDGE AND BELIEF.

REGISTERED AND SURVEYOR  
REGISTRATION NO. 12492  
STATE OF COLORADO  
03-07-13

UTAH ENGINEERING & LAND SURVEYING  
85 SOUTH 200 EAST - VERNAL, UTAH 84078  
(435) 789-1017

SCALE 1" = 1000'

PARTY B.J. B.B. T.B.

WEATHER COLD

DATE SURVEYED: 04-24-13

DATE DRAWN: 05-06-13

REFERENCES G.L.O. PLAT

FILE WPX Energy Rocky Mountain, LLC

LEGEND:

- └ = 90° SYMBOL
- = PROPOSED WELL HEAD.
- ▲ = SECTION CORNERS LOCATED.

1982 Alum. Cap,  
0.2' High, Mound  
of Stones  
Lat: 39.415822°  
Long: 108.101033°

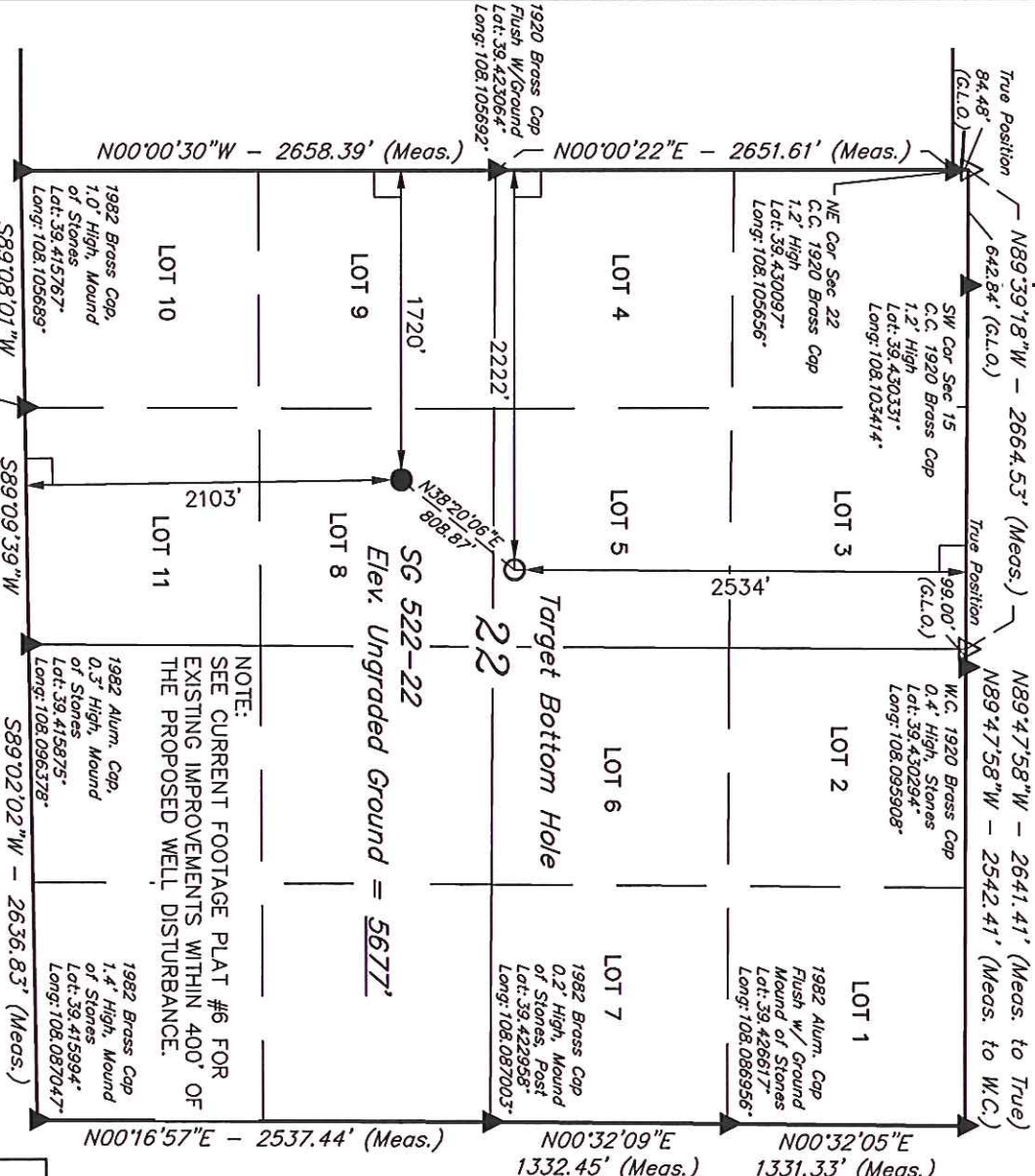
NAD 83 (TARGET BOTTOM HOLE)

LATITUDE = 39°25'24.06" (39.423350)  
LONGITUDE = 108°05'52.18" (108.097828)  
STATE PLANE-(COLO. CENTRAL-NAD 83)  
N = 1588577.31  
E = 2266234.72

PDOP = 1.7

NAD 83 (SURFACE LOCATION)

LATITUDE = 39°25'17.79" (39.421608)  
LONGITUDE = 108°05'58.58" (108.099606)  
STATE PLANE-(COLO. CENTRAL-NAD 83)  
N = 1588957.70  
E = 2265715.18



NOTE:  
SEE CURRENT FOOTAGE PLAT #6 FOR  
EXISTING IMPROVEMENTS WITHIN 400' OF  
THE PROPOSED WELL DISTURBANCE.

SG 522-22  
Elev. Ungraded Ground = 5677'